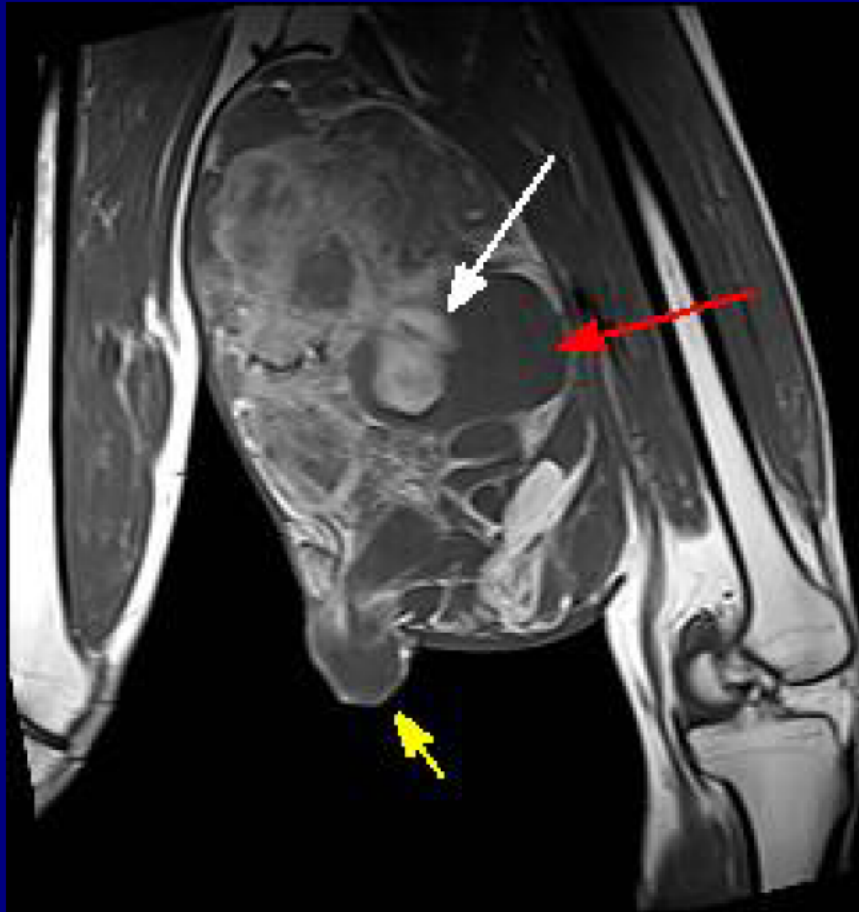


BEST CASES OF THE AIRP

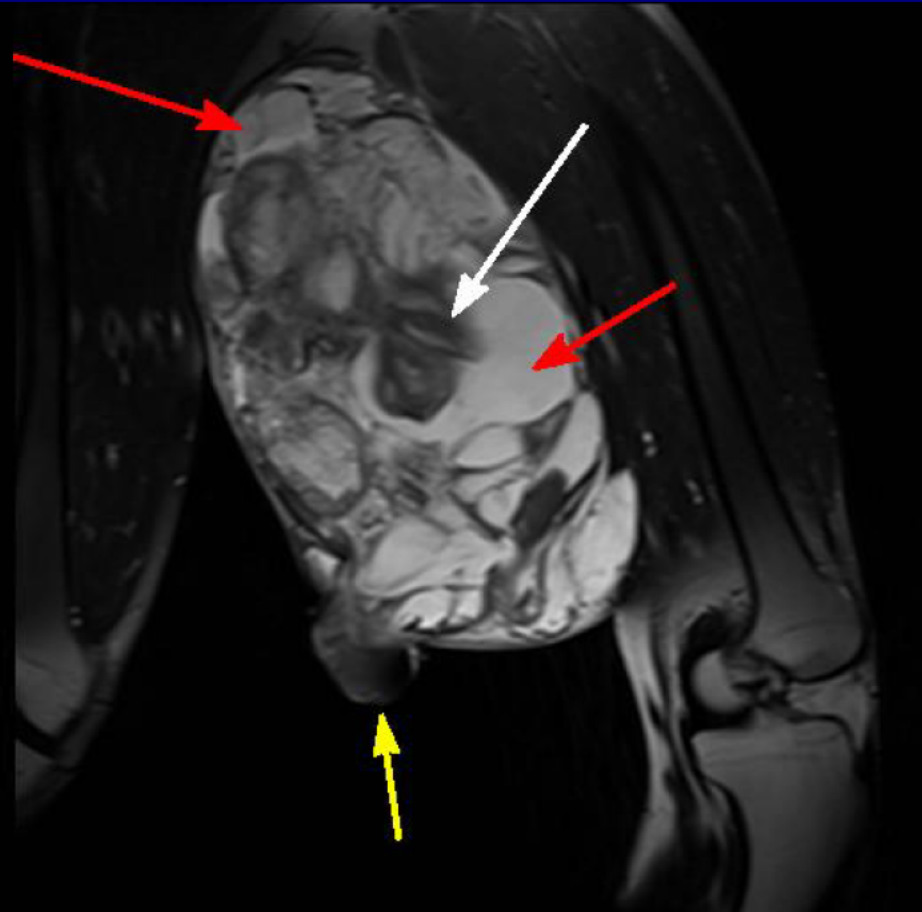
January 23 – February 17, 2012

Musculoskeletal Best Case

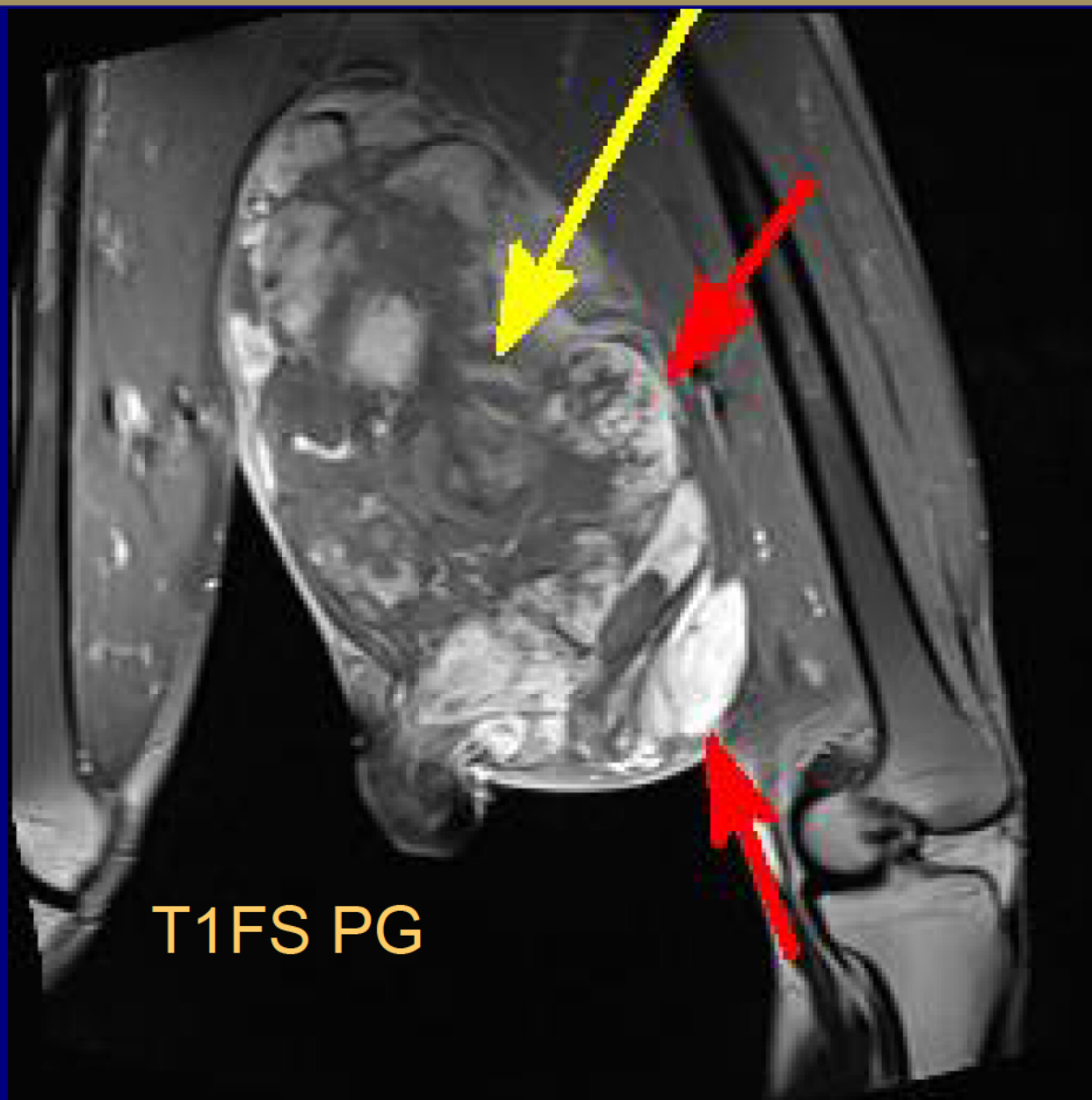
40-year-old male who presented with
a large medial left thigh mass,
increasing in size over four years



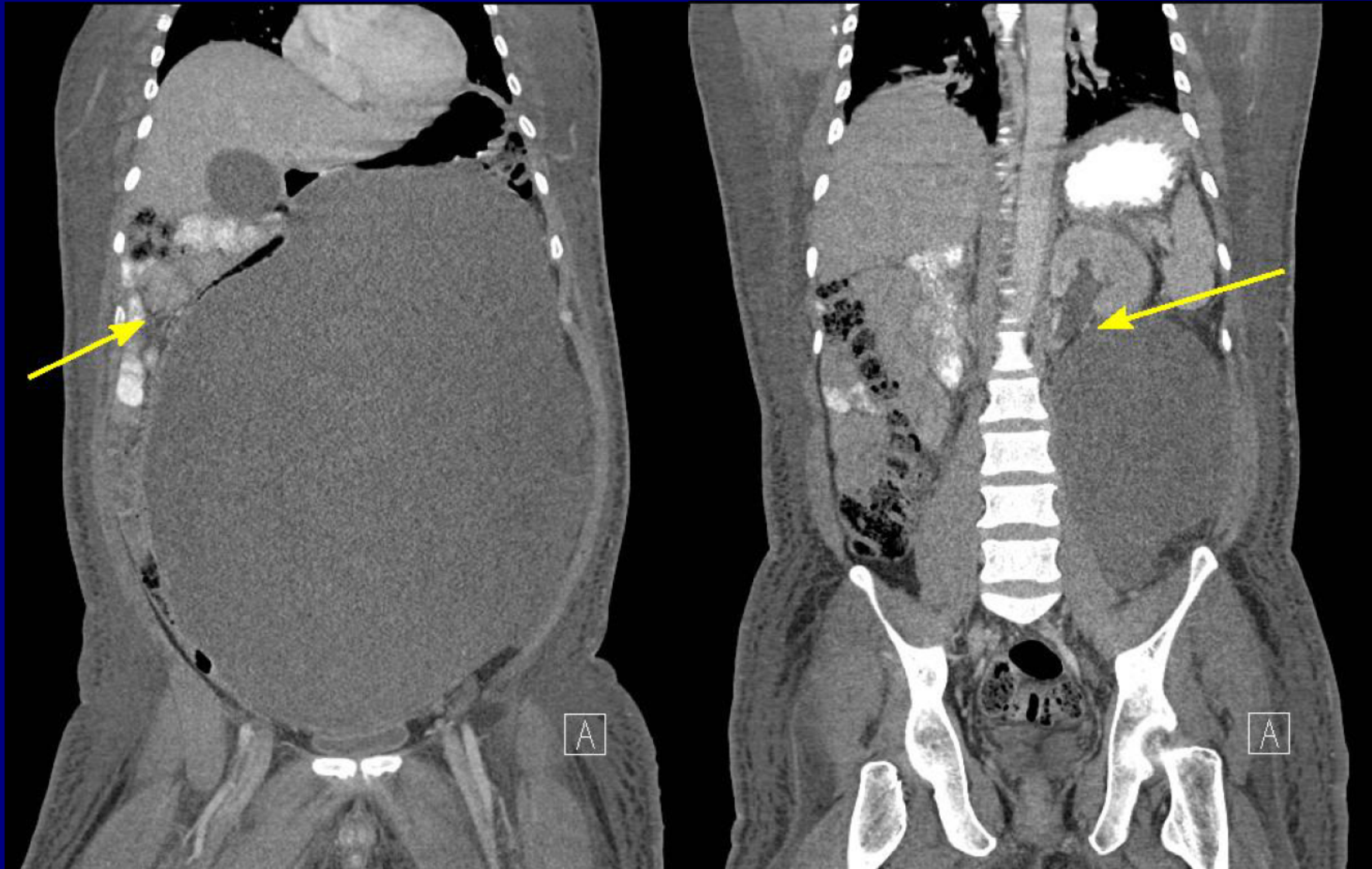
T1



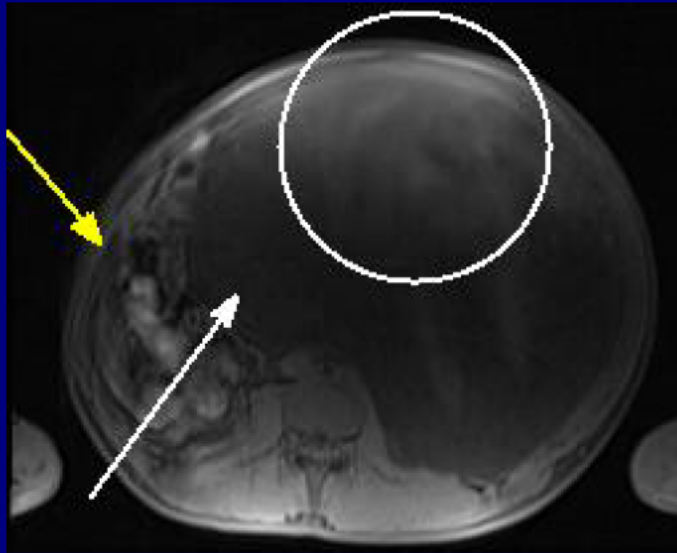
T2FS



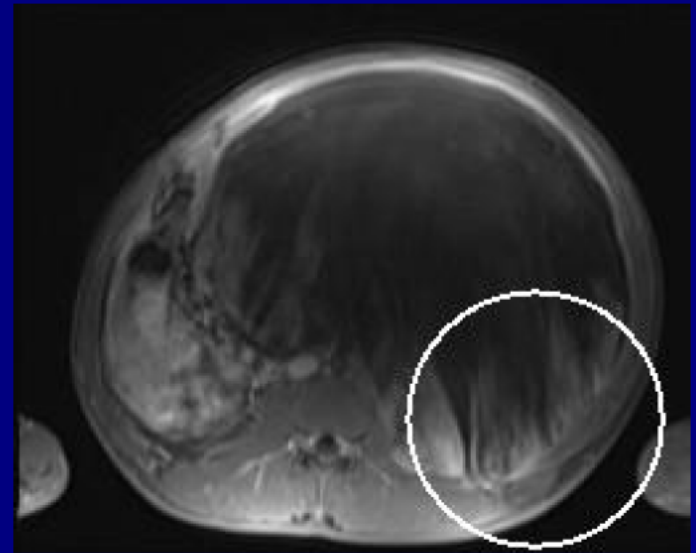




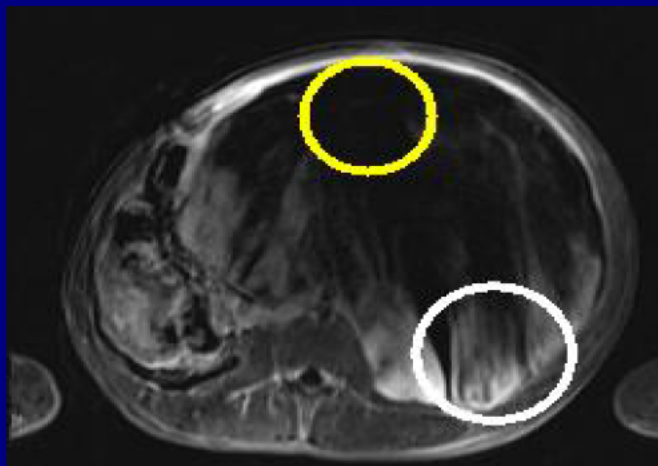
CECT



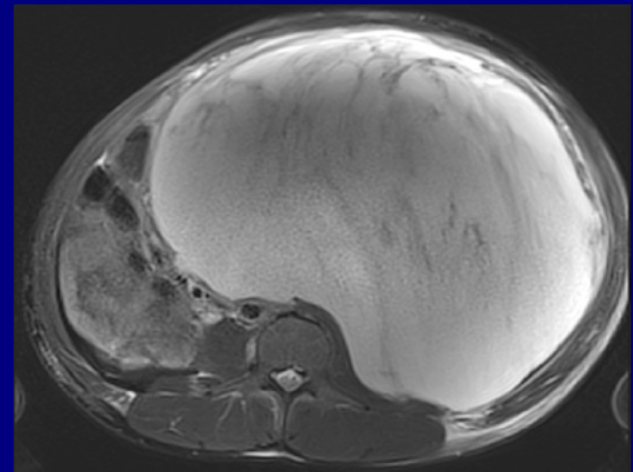
T1 PRE



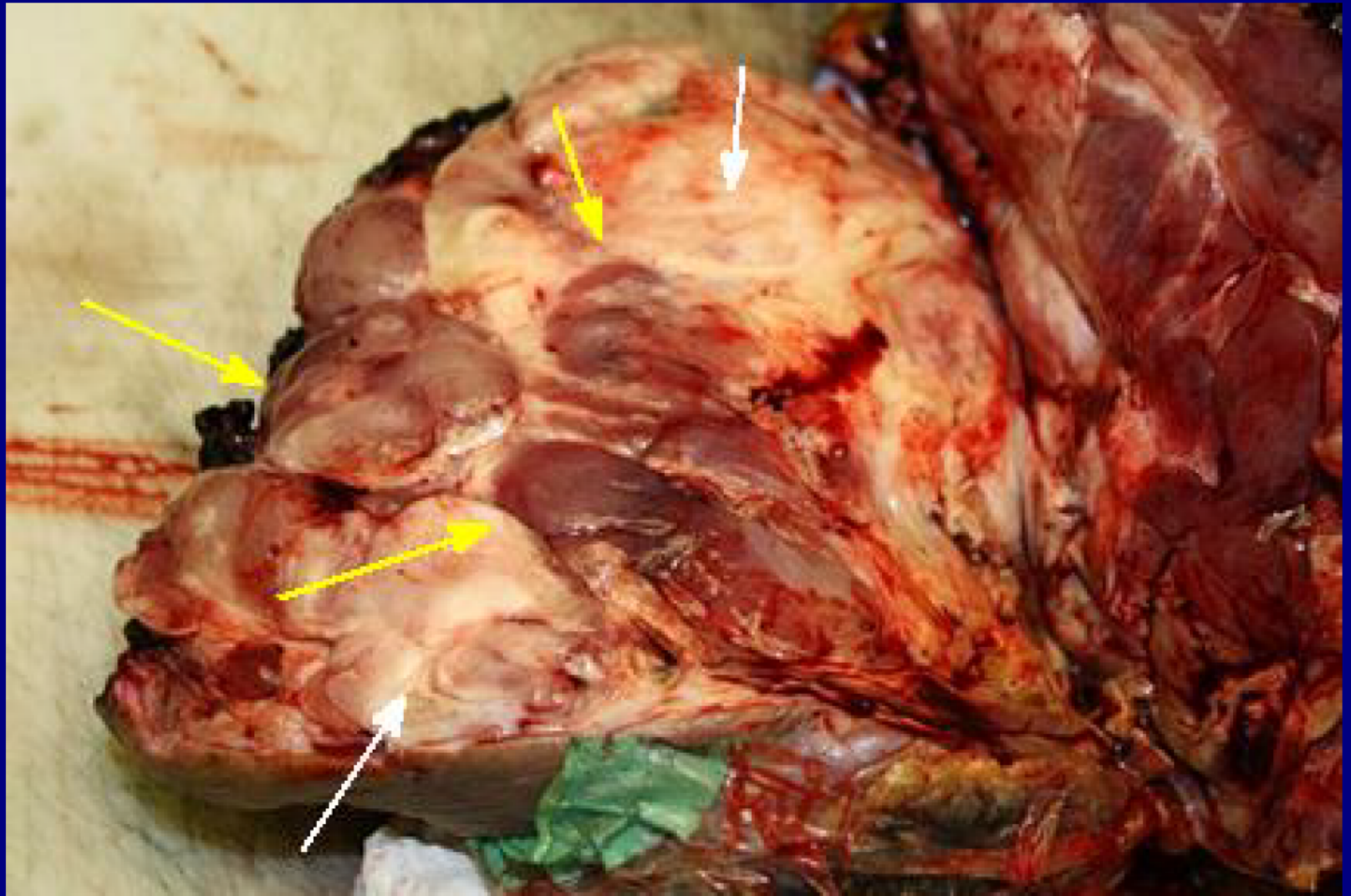
T1 POST

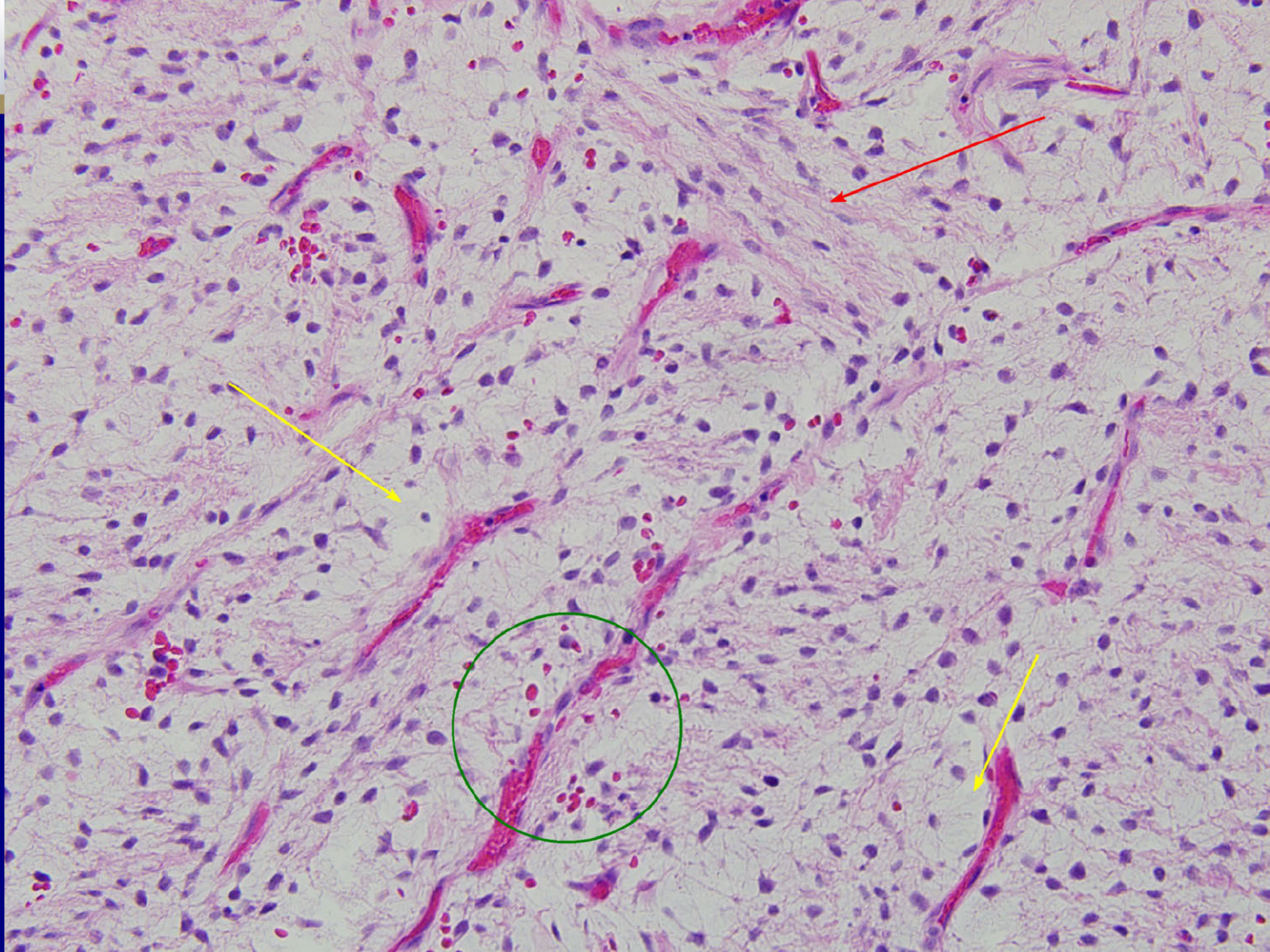


Subtraction



T2





Myxoid Liposarcoma of the Thigh with Retroperitoneal Metastasis

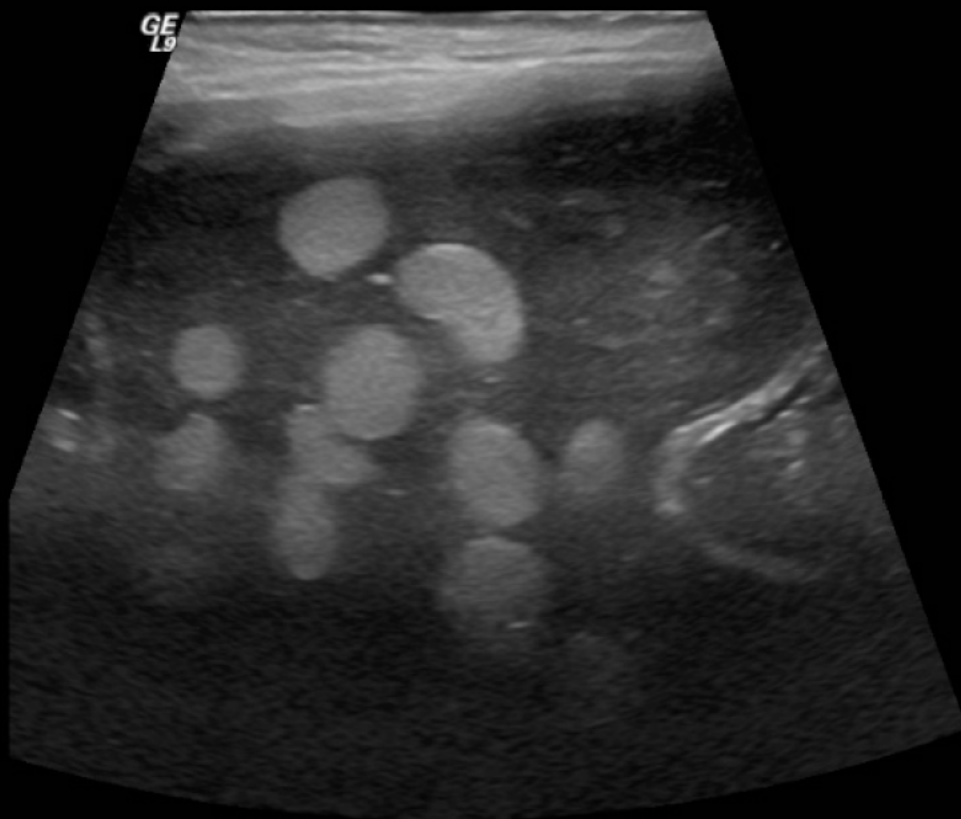
David Arrington, MD

Medical University of South Carolina

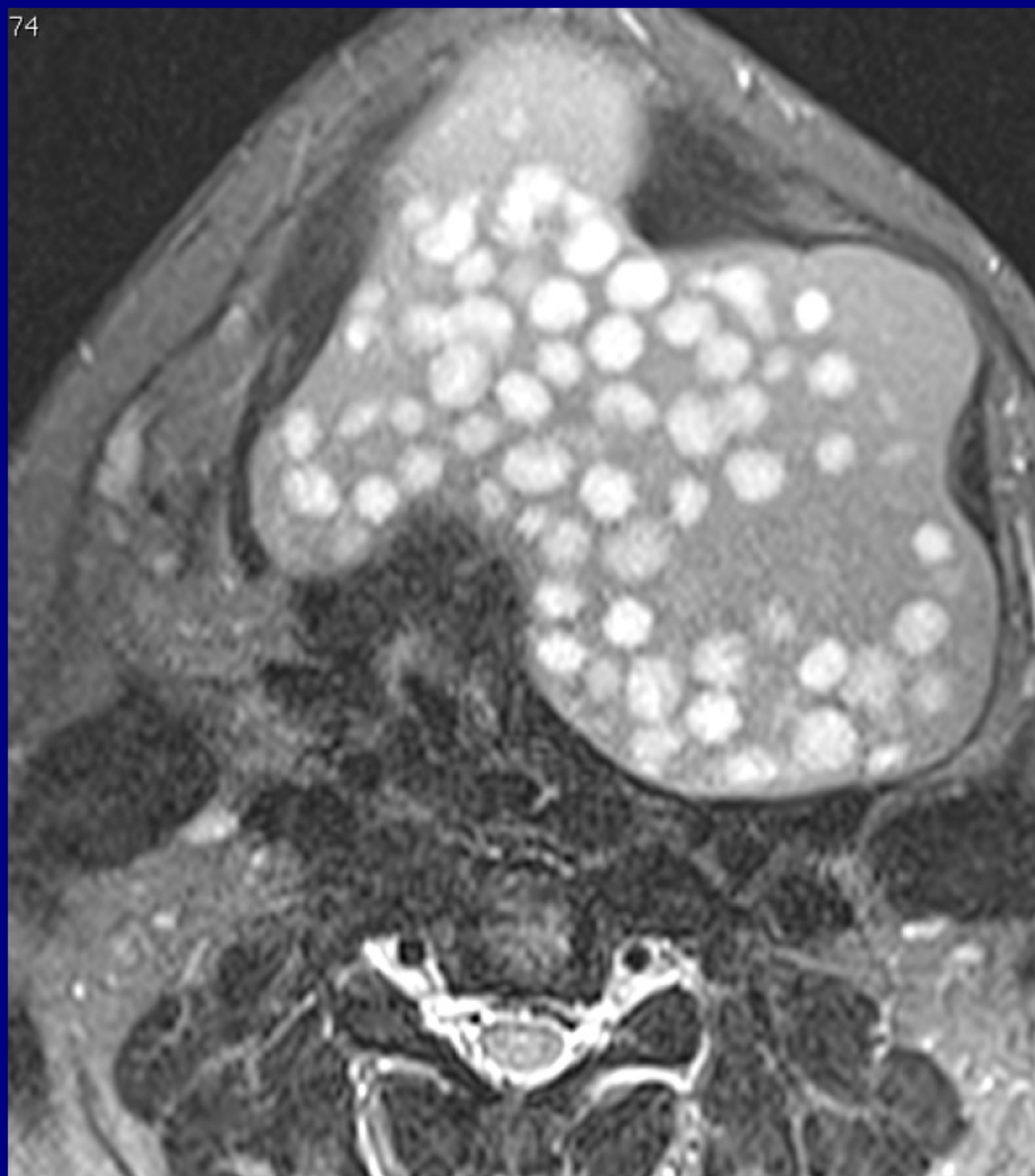
Charleston, South Carolina

Neuroradiology Best Case

22 year old male with several years of progressive submental soft tissue fullness and newly developed respiratory difficulties (snoring, choking, and difficulty breathing). The patient initially ascribed the fullness to a "double-chin" related to obesity, however, the mass persisted despite 45 lb. intentional weight loss in the year prior to presentation.



74

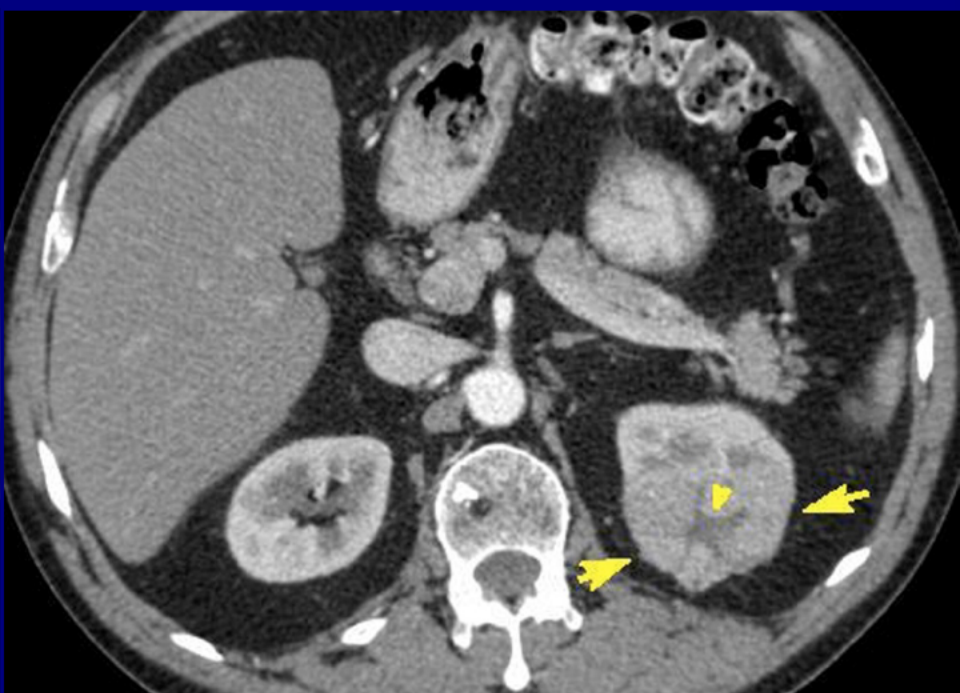
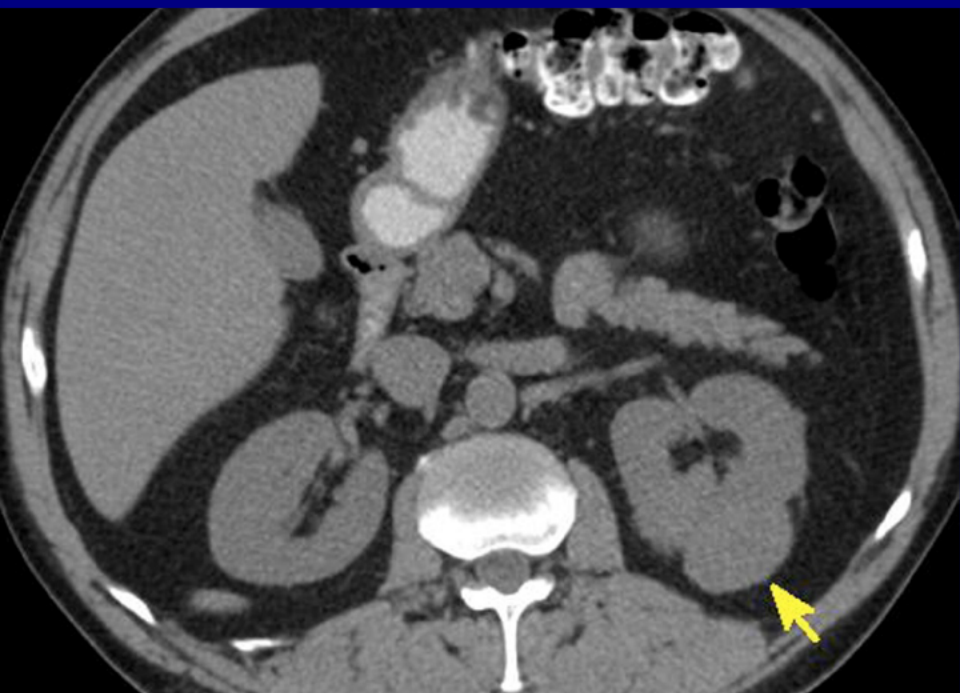


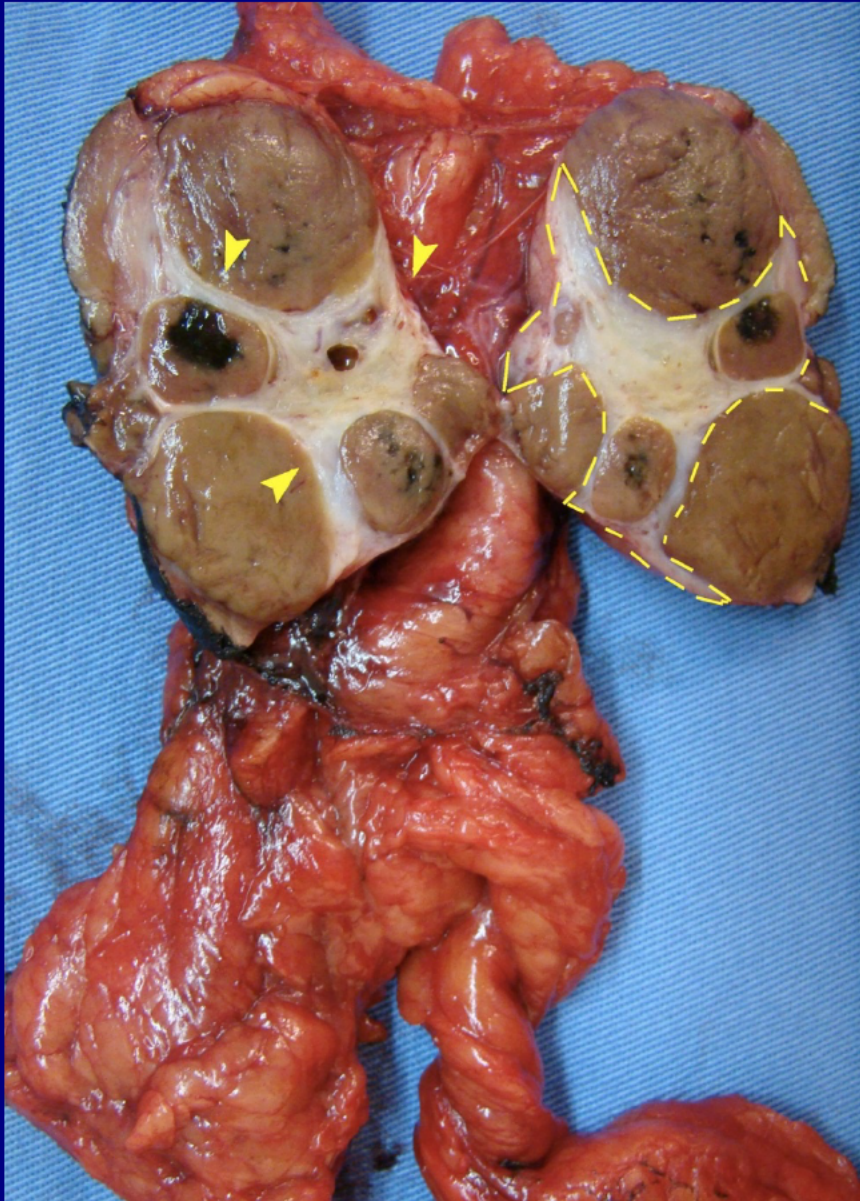
Dermoid

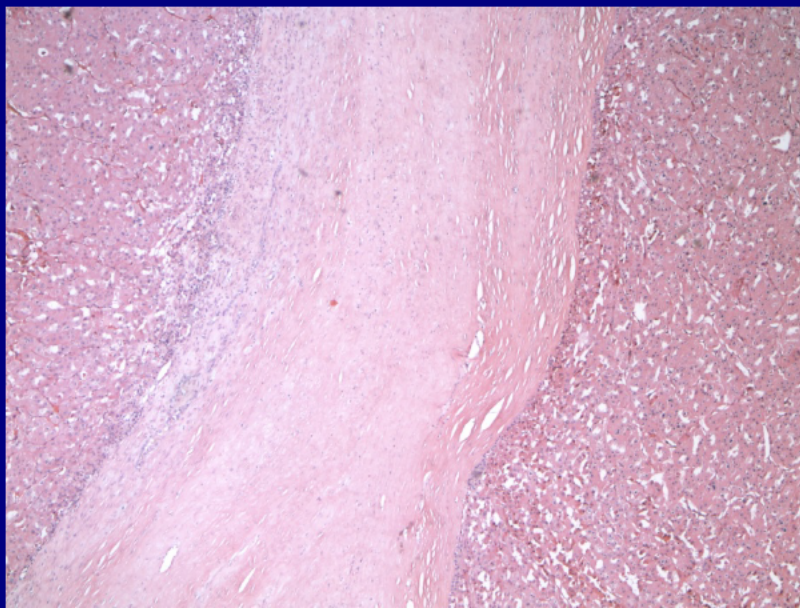
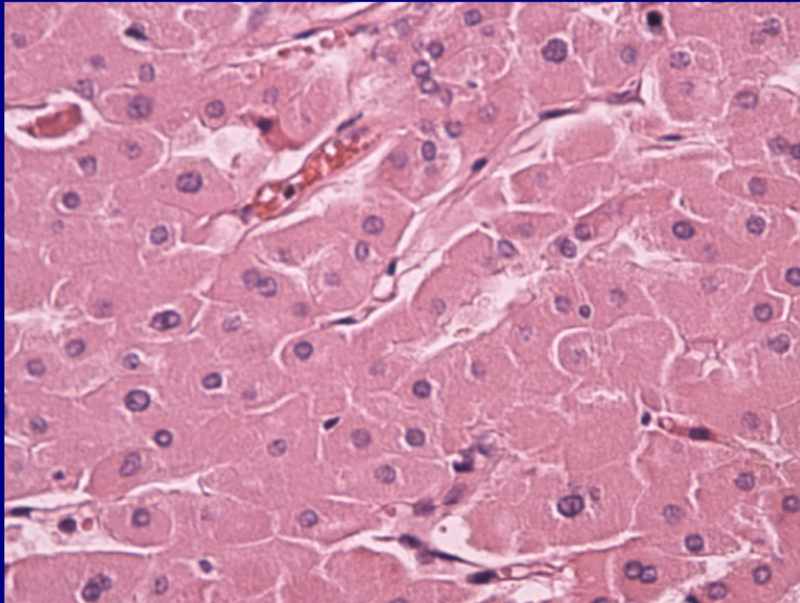
Richard Irion, MD
Medical College of Wisconsin
Mikwaukee, Wisconsin

Genitourinary Best Case

68-year-old male patient with lumbar pain for several months







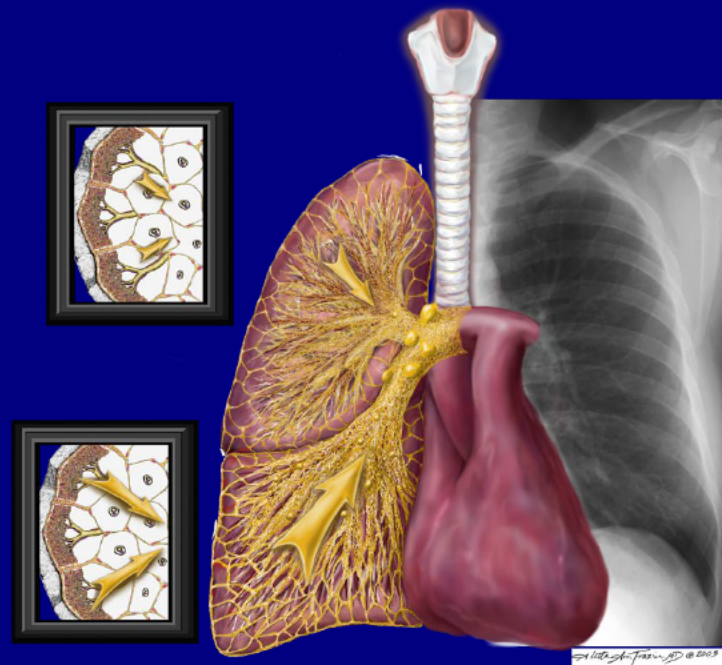
Renal Oncocytoma

Renata Fava, MD

Fundação Pio XII - Hospital de Câncer
de Barretos

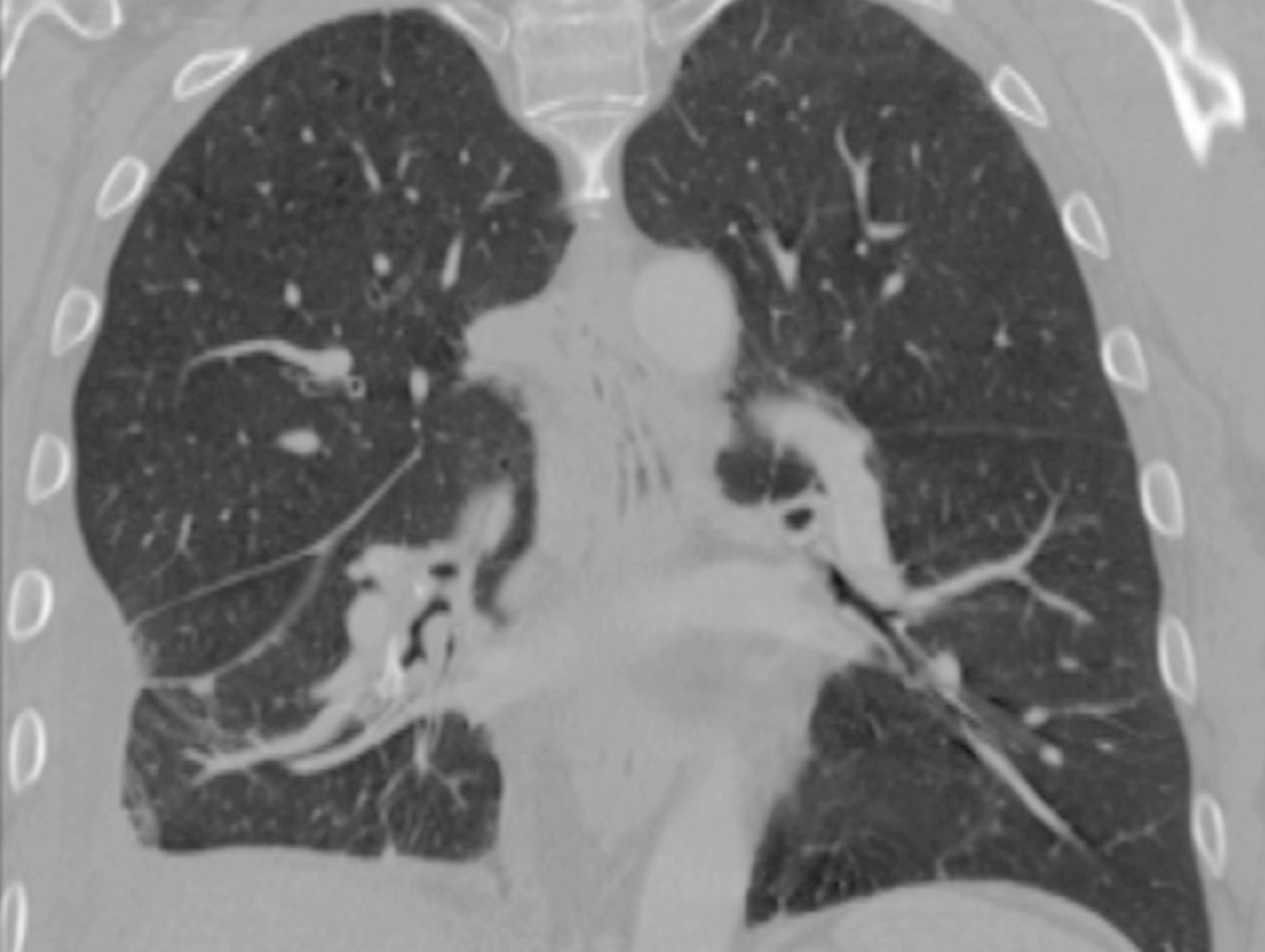
São Paulo, Brazil

PULMONARY AND MEDIASTINAL IMAGING

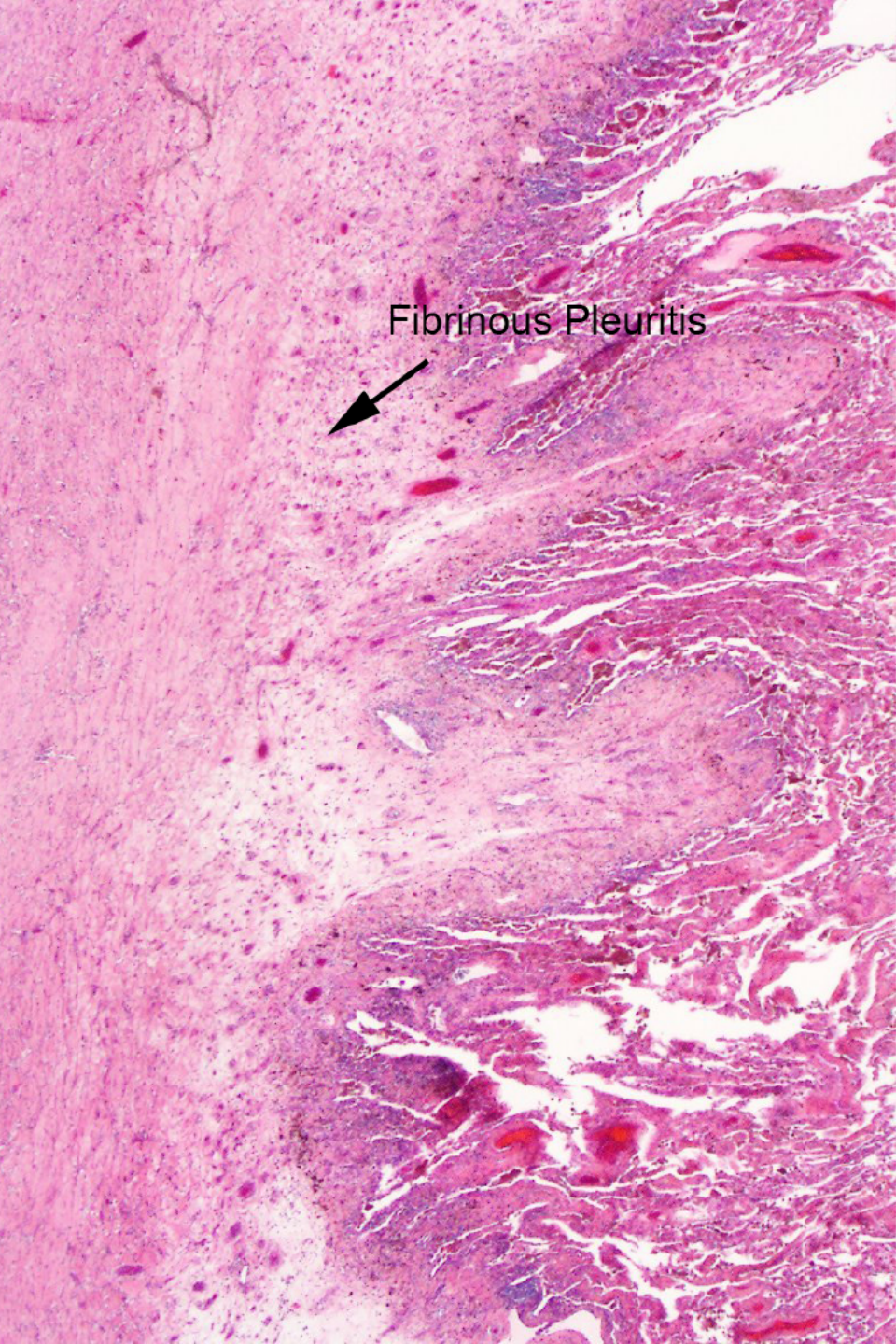


53 year old male with recurrent
pneumonia and empyema

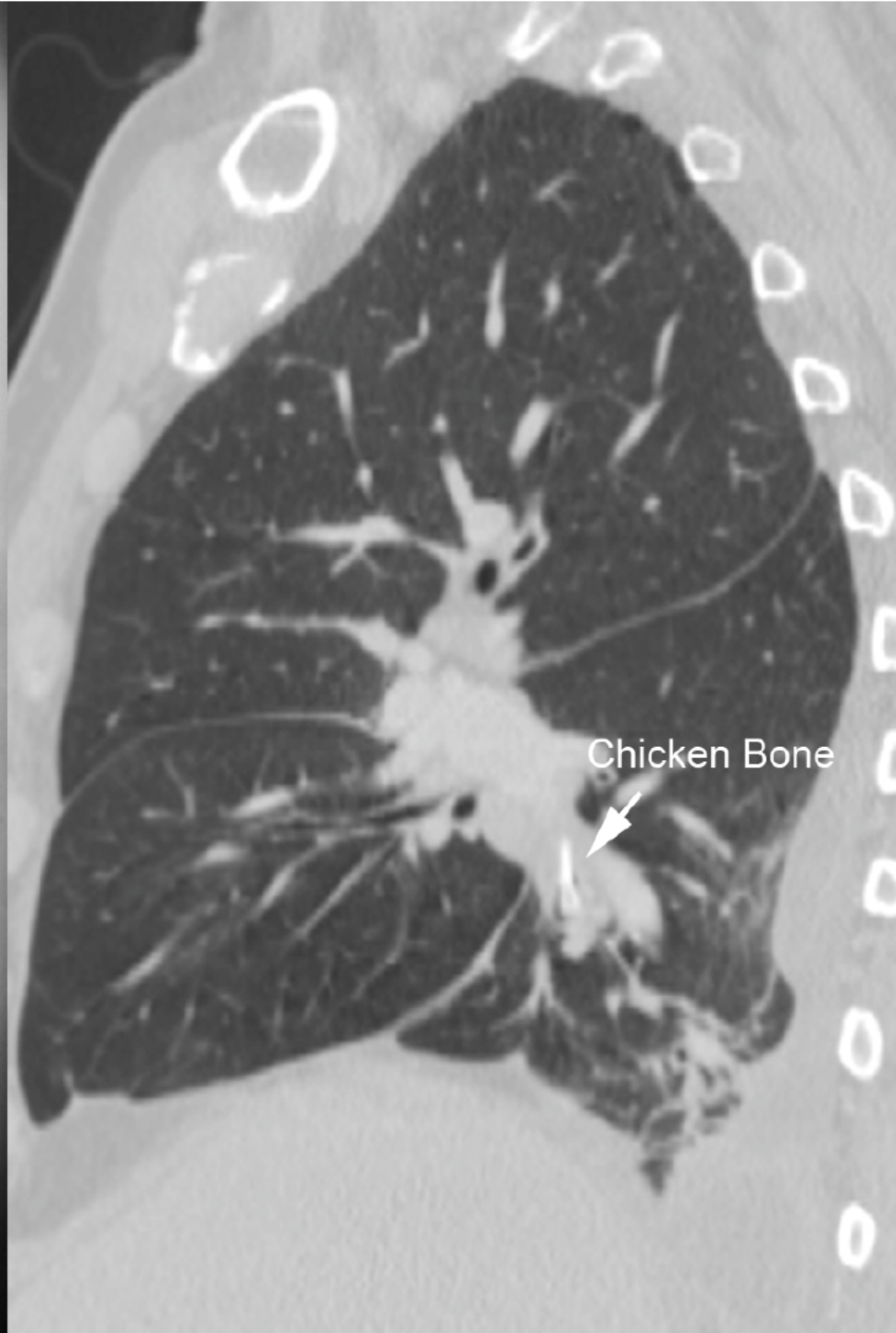


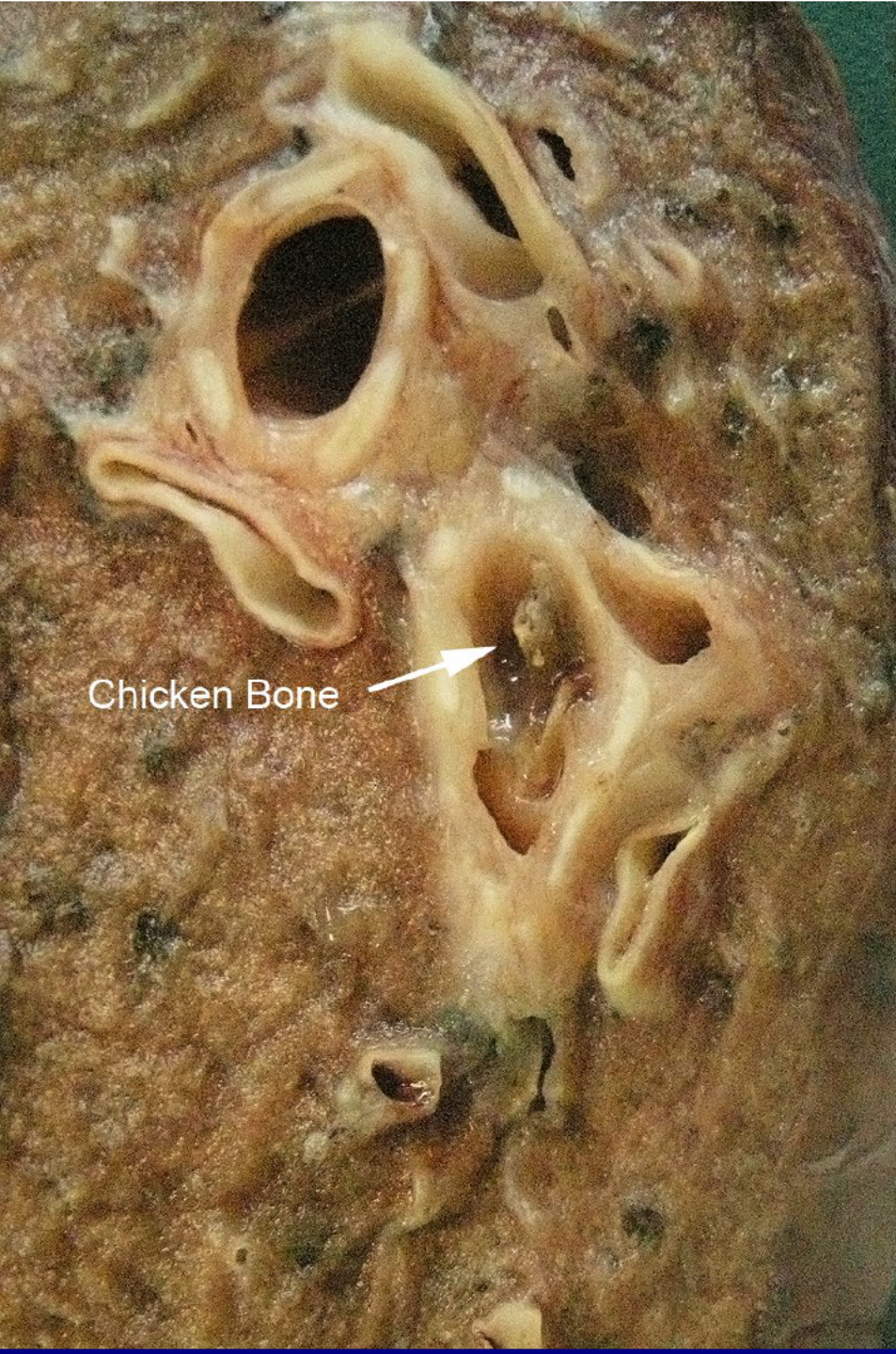


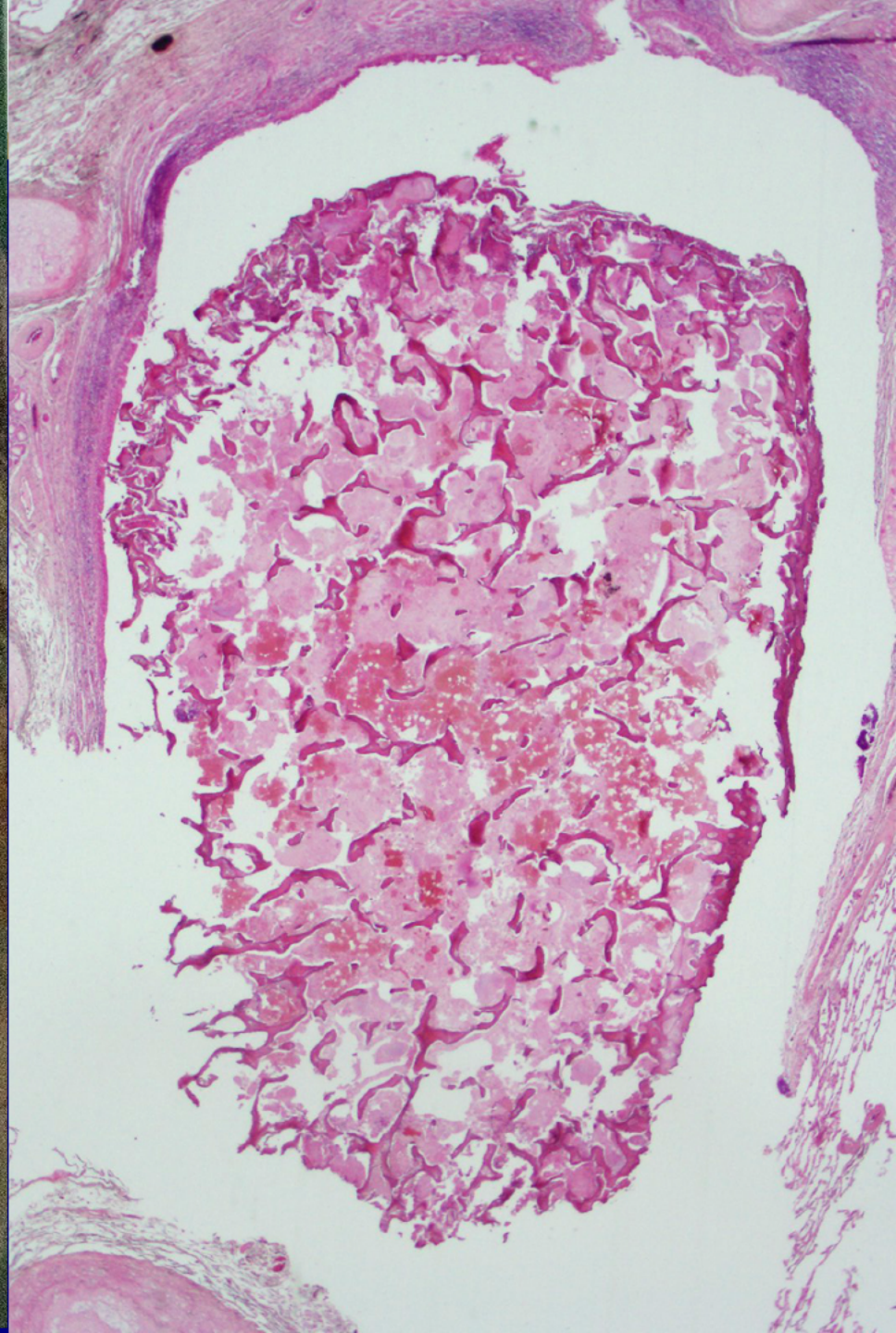












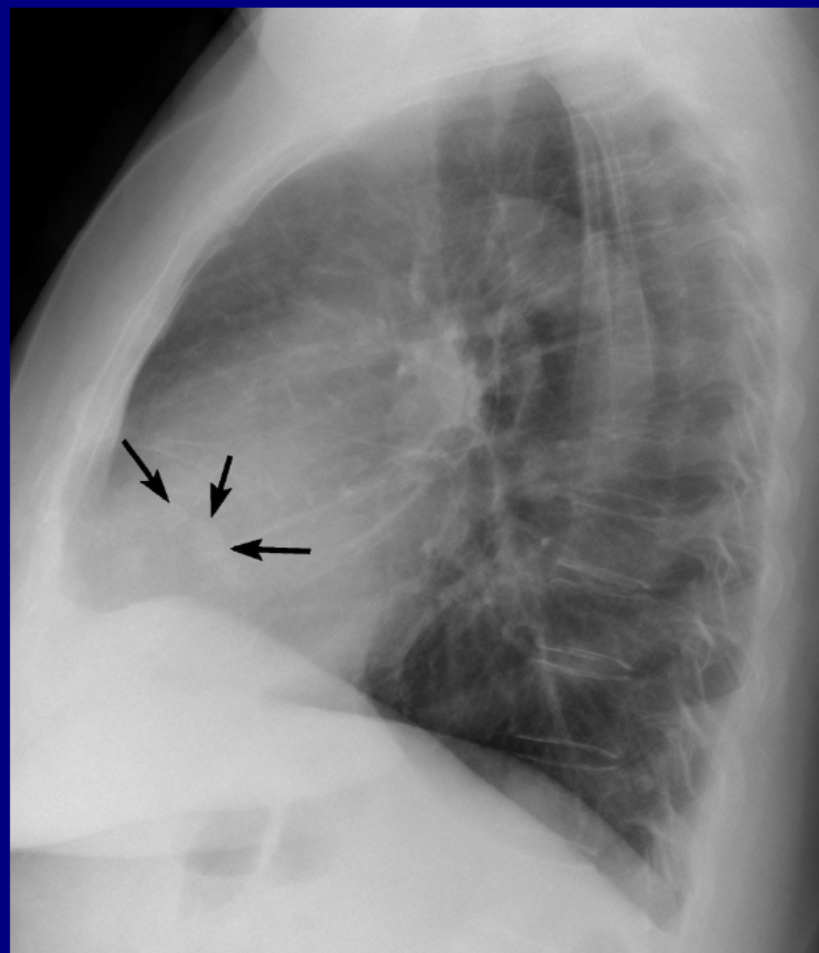
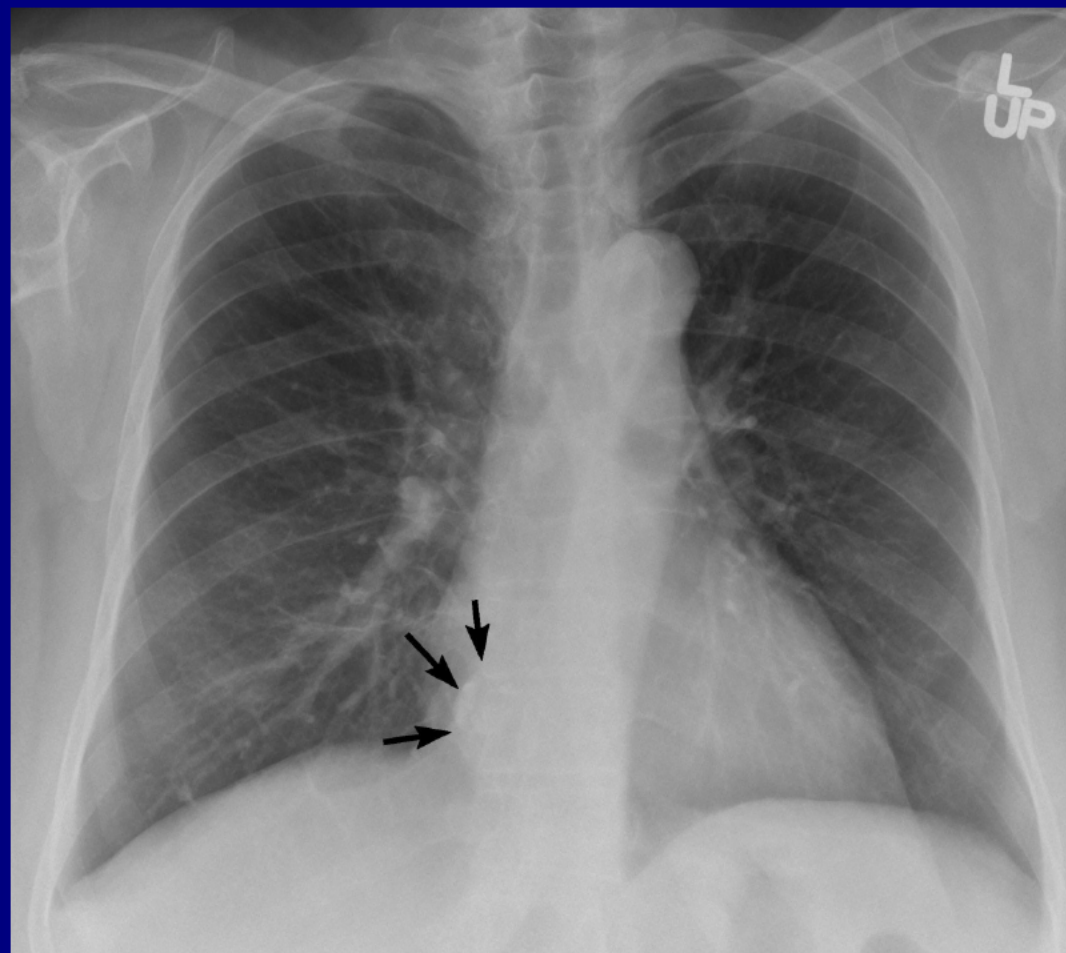
Foreign Body Aspiration (Chicken Bone), Post Obstructive Pneumonia and Empyema

Badriya Al Qassabi, MD
McGill University Hospital Center
Montreal, Canada

Cardiovascular Imaging



65 year old female with shortness of
breath





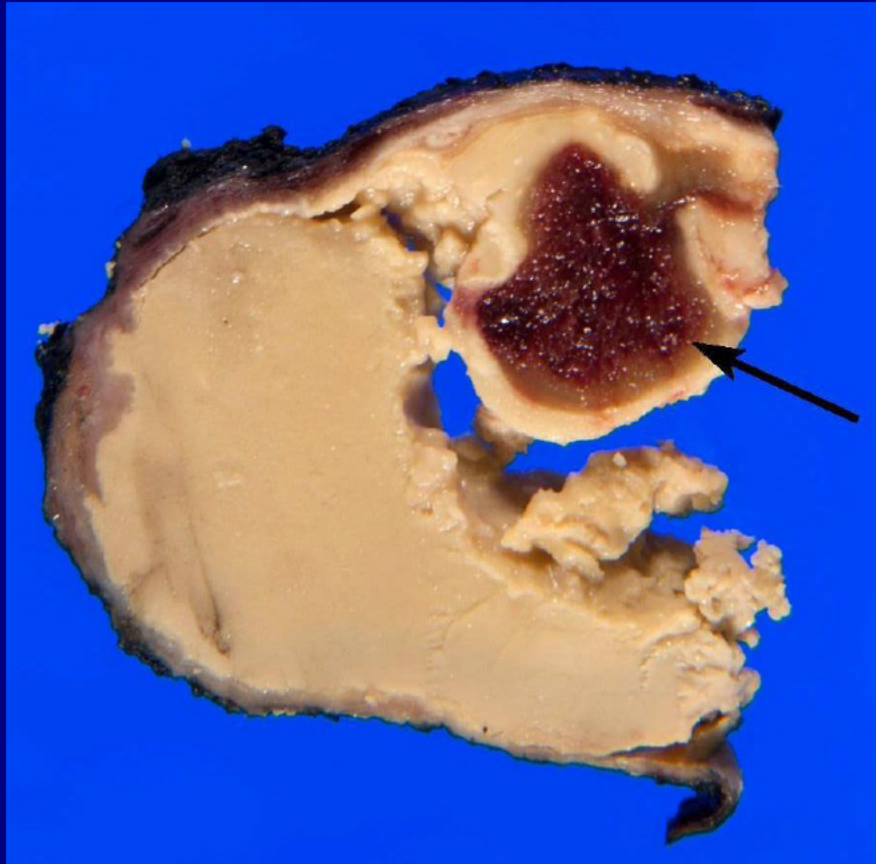


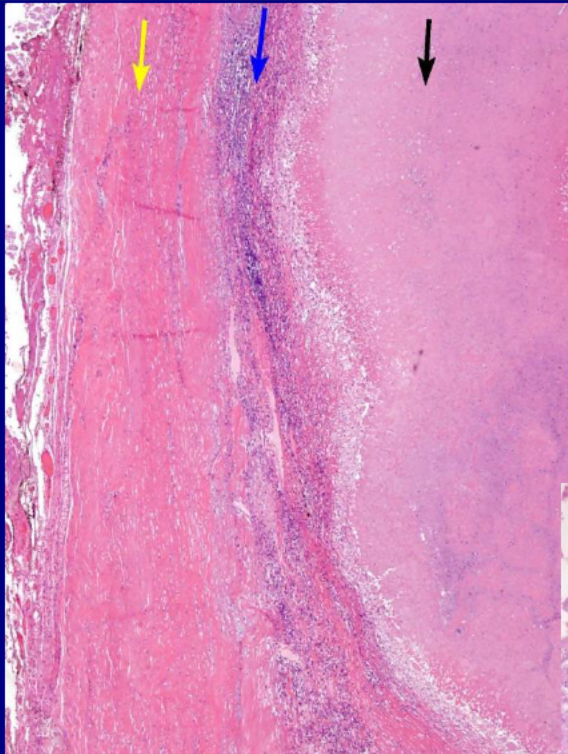
Axial spin-echo MR



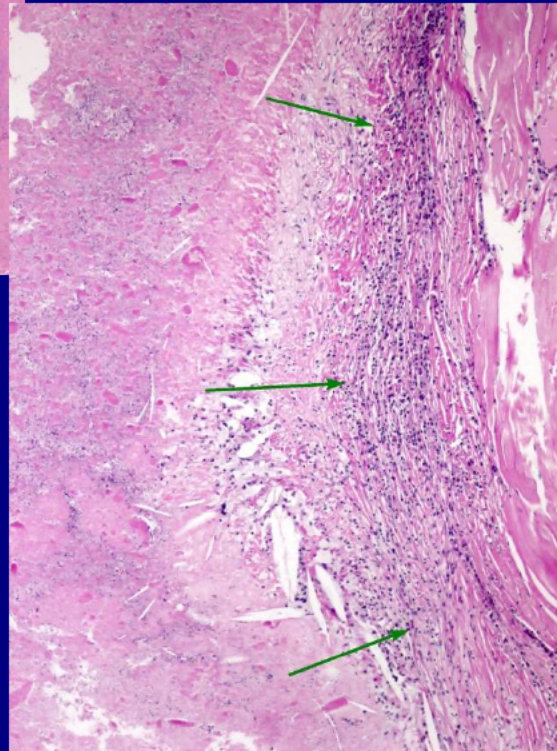
Coronal spin-echo MR

Gross specimen shows necrotic contents with focal hemorrhage

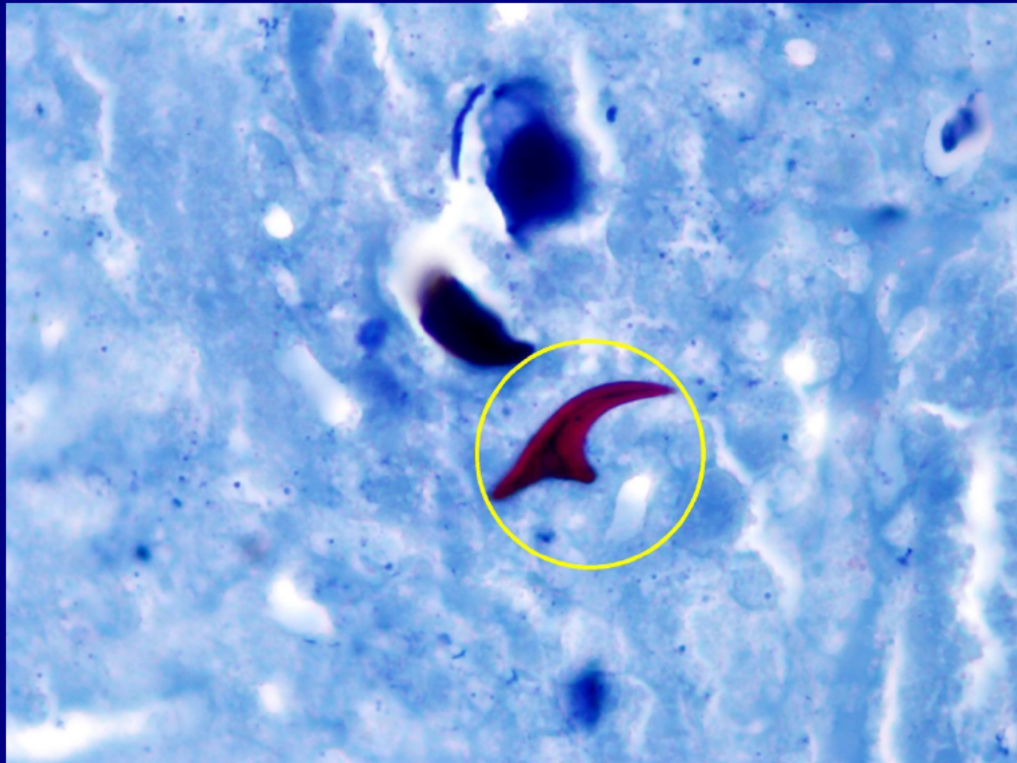




Cyst: outer wall of granulation tissue,
lined with inflammatory cells,
large central zone of necrosis



Acid-fast hooklets compatible with
Echinococcus (Ziehl-Neelsen stain)

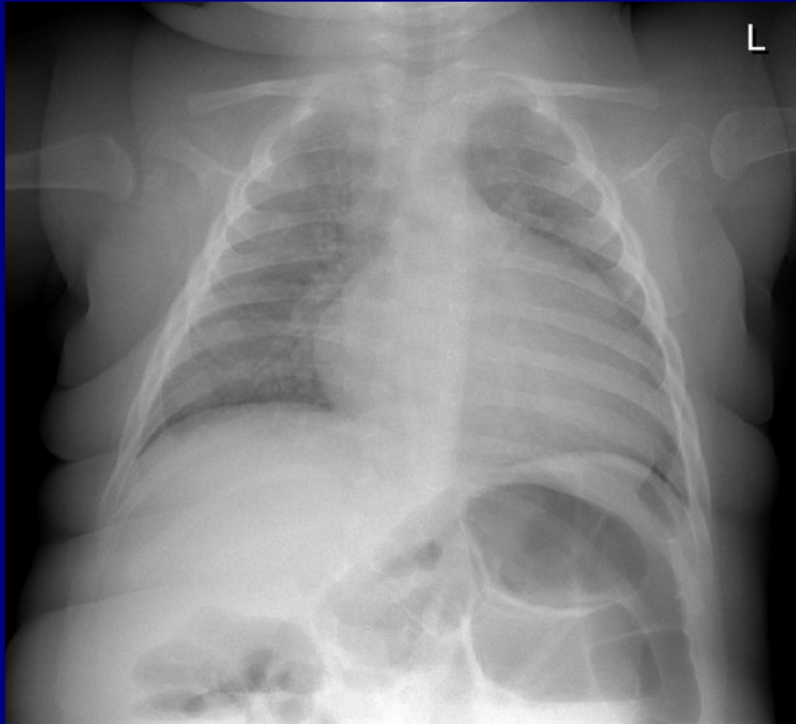


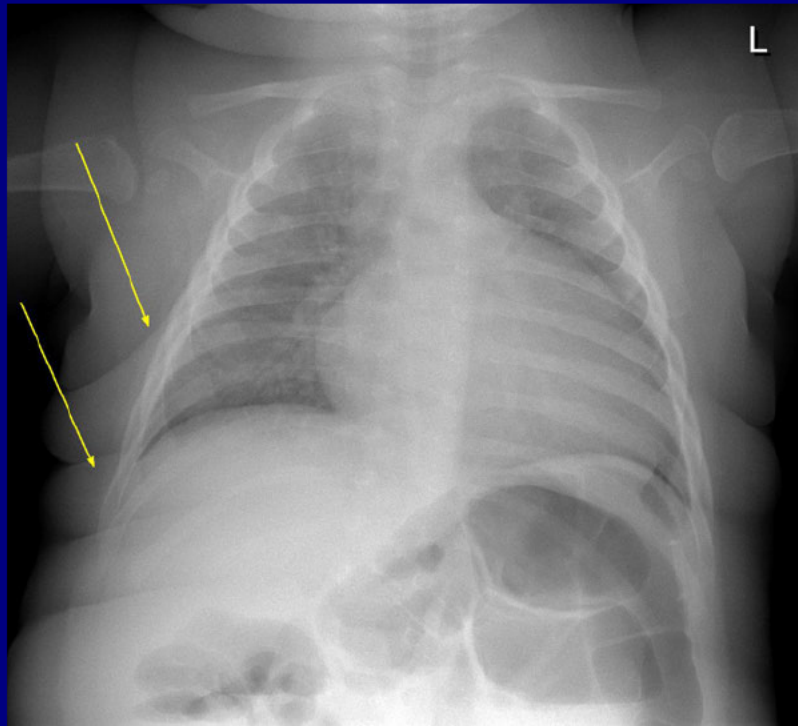
Pericardial Echinococcal Cyst

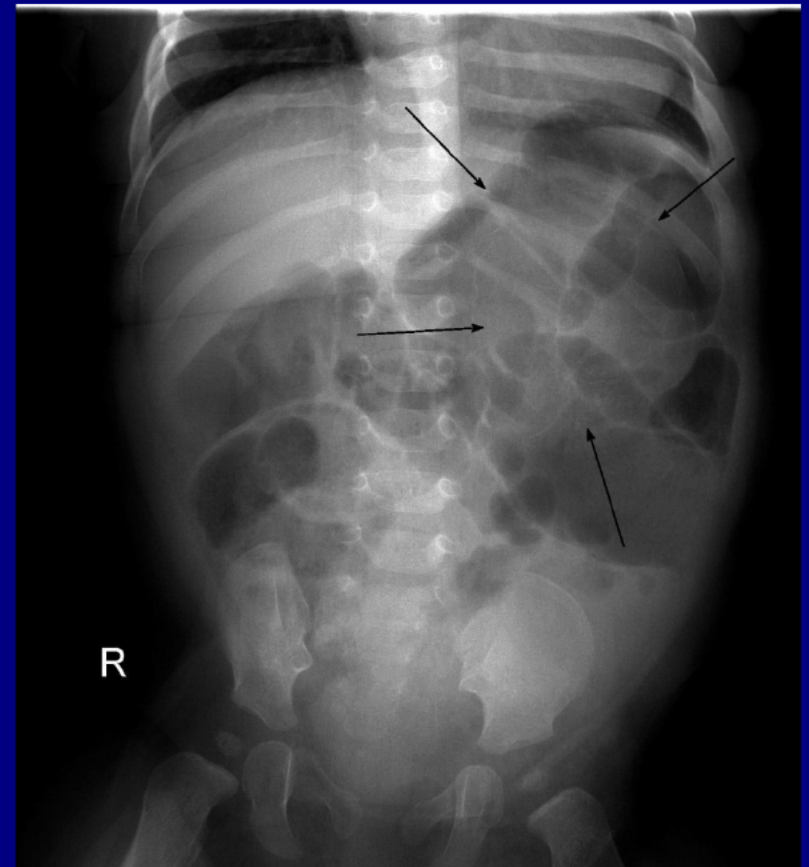
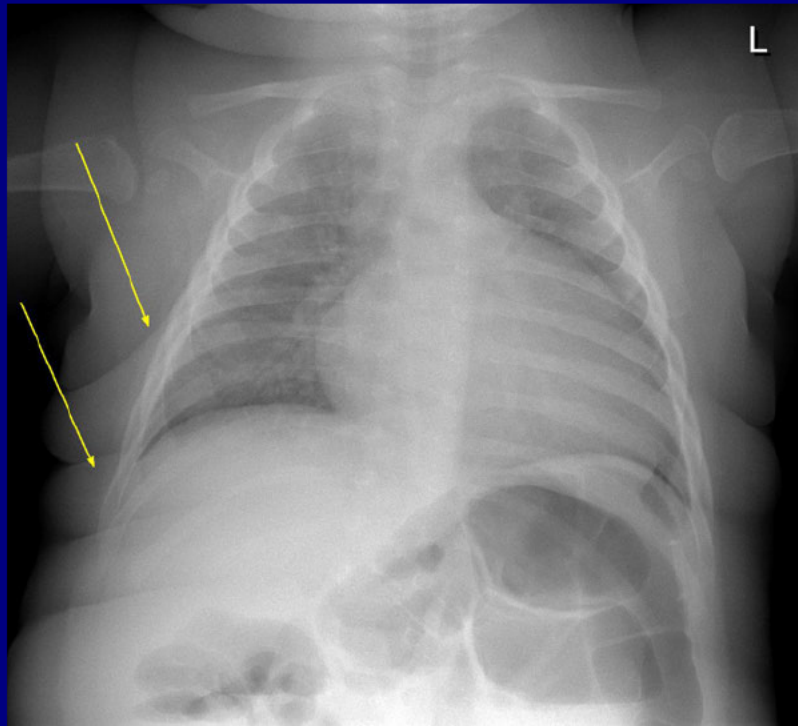
Simon Ko, MD
University of Alberta
Edmonton, Canada

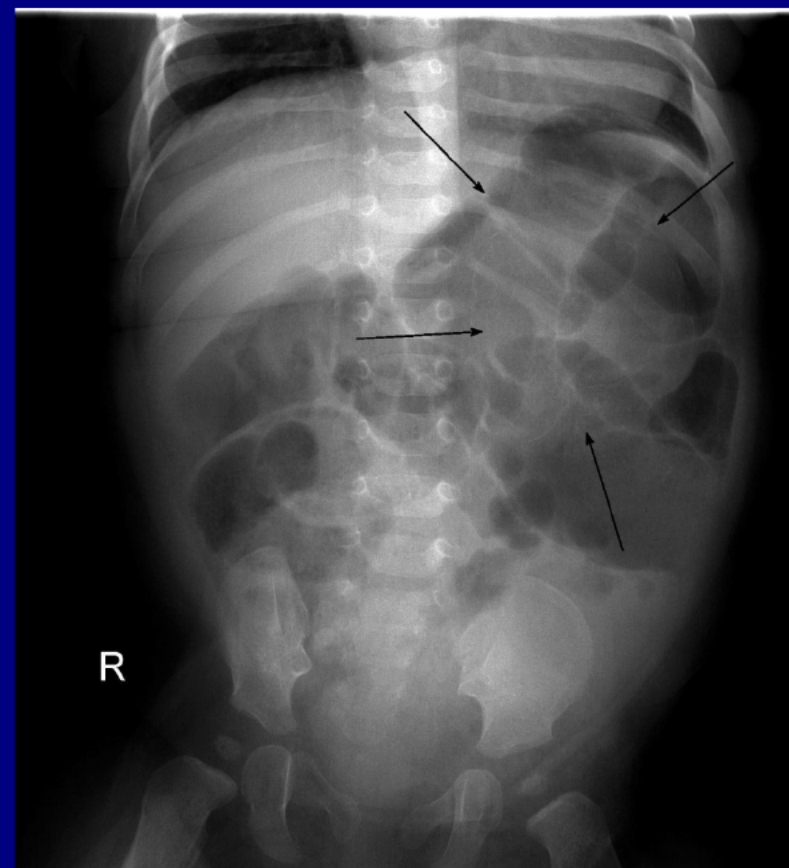
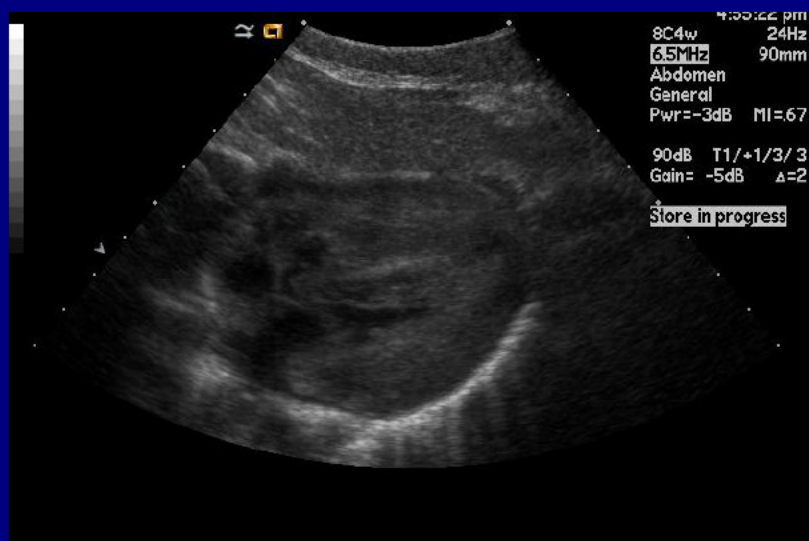
Pediatric Best Case

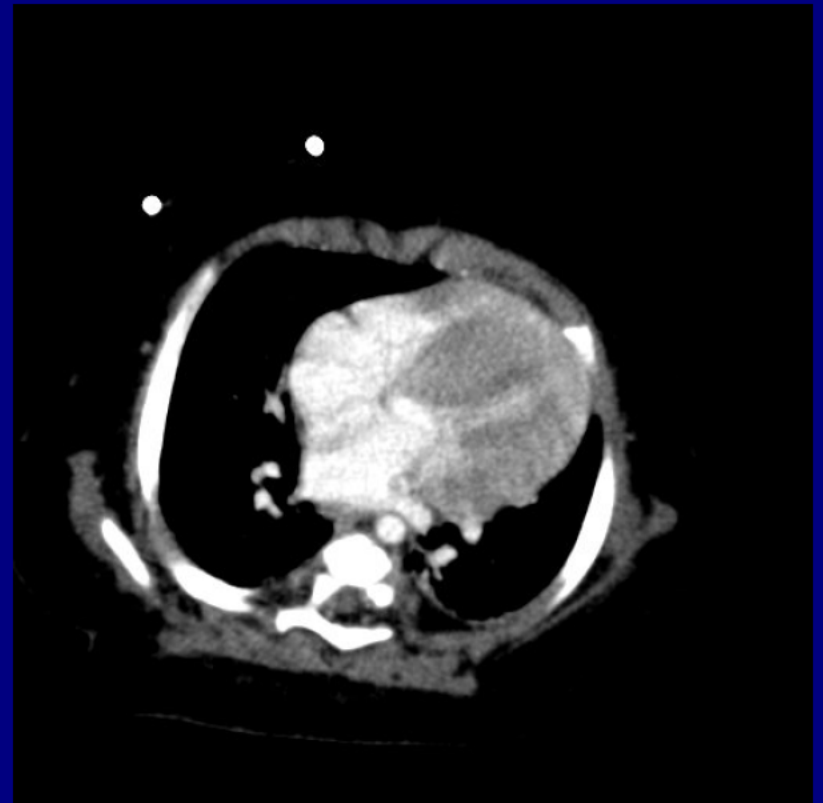
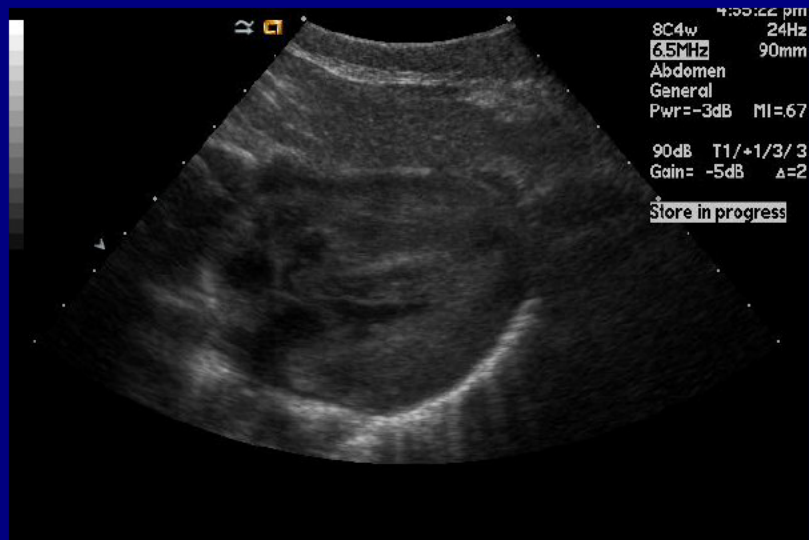
6 month old girl with 3 month history of
excessive weight gain, acne, and pubic
hair

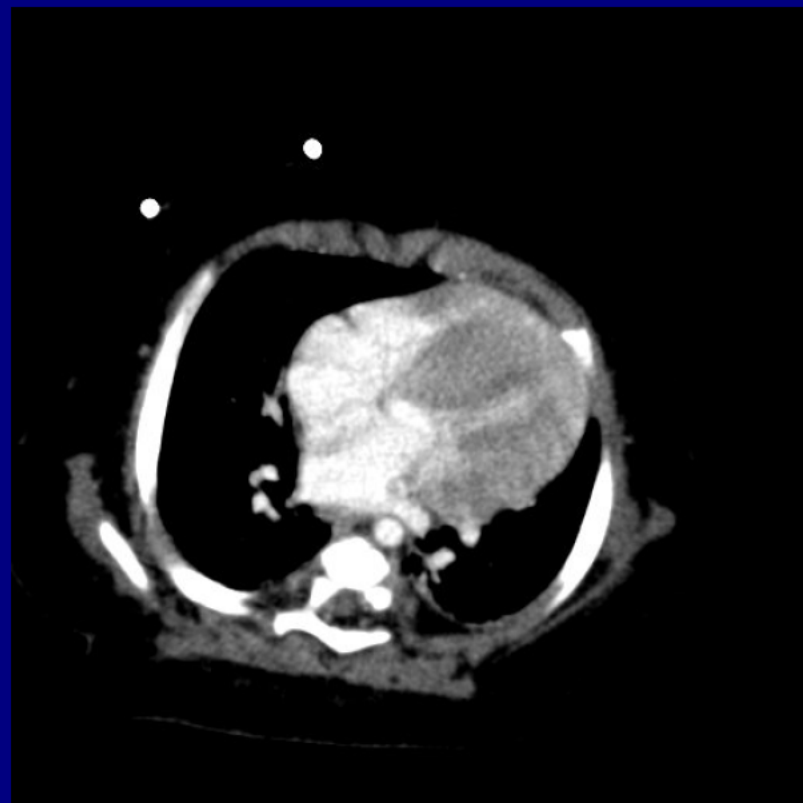
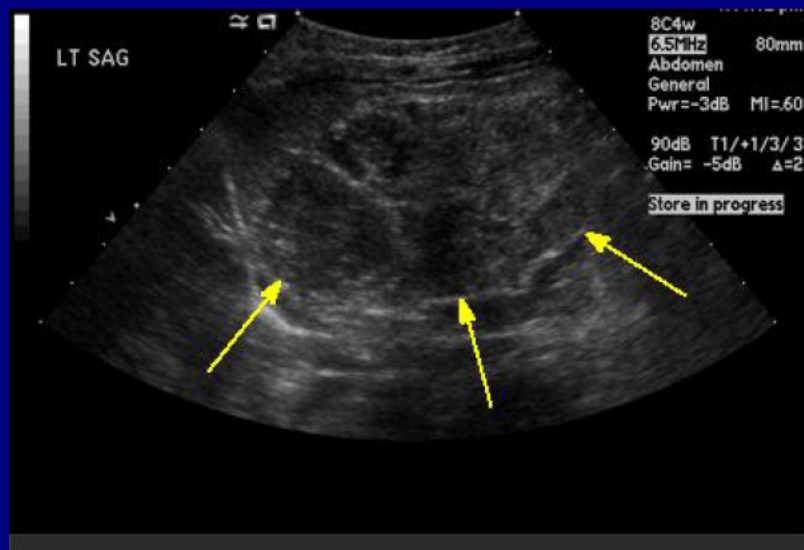


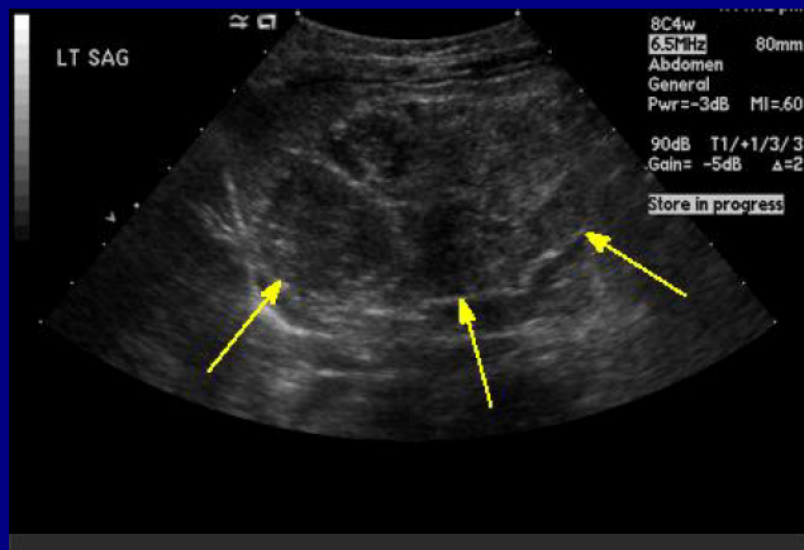


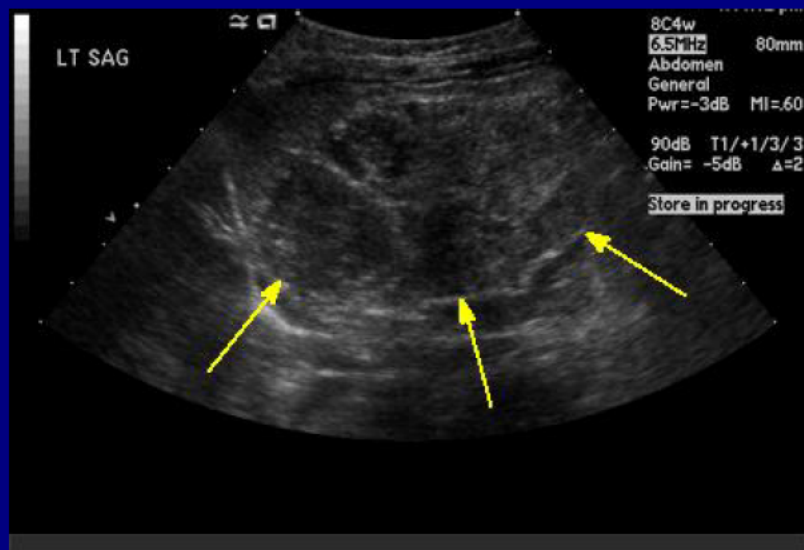




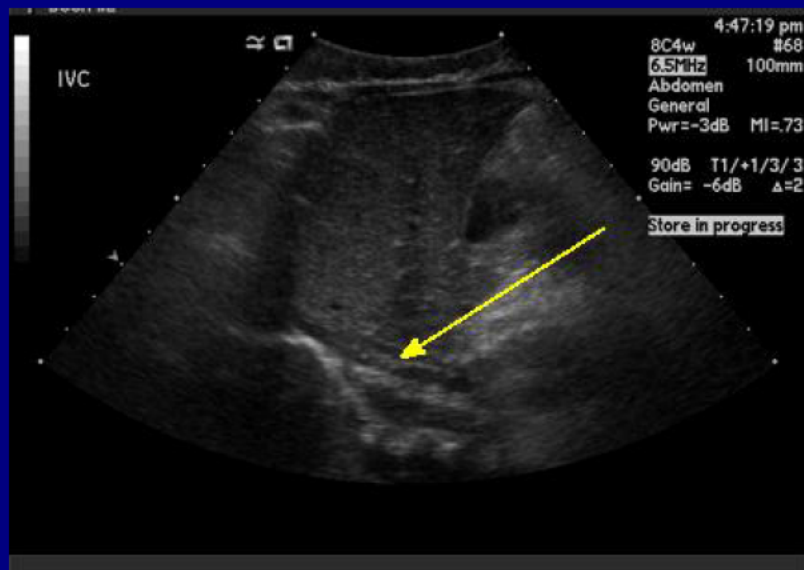


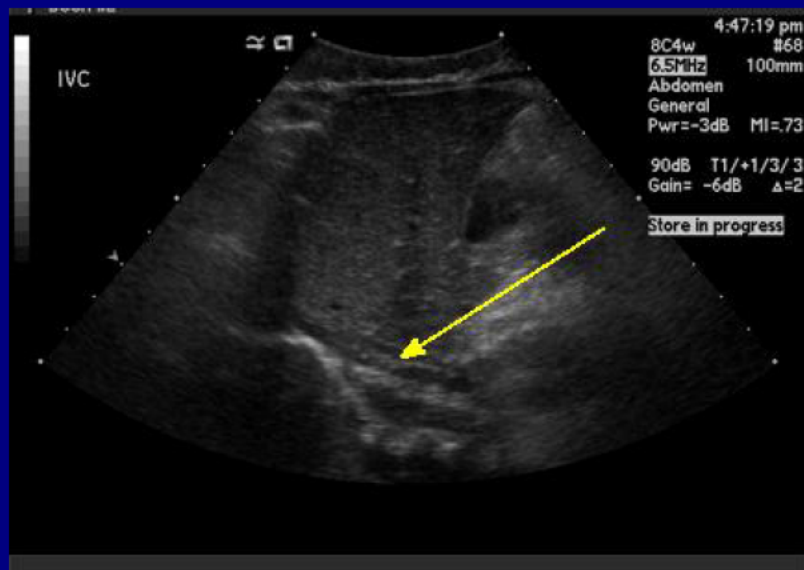


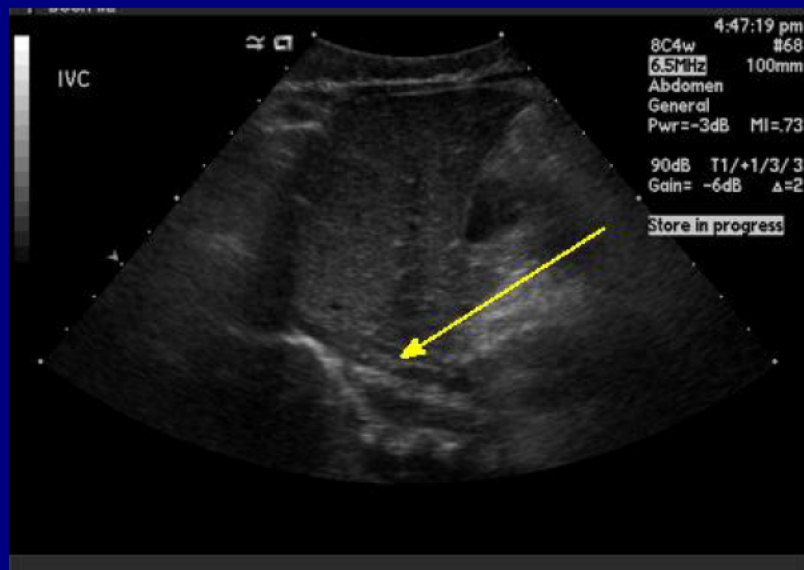














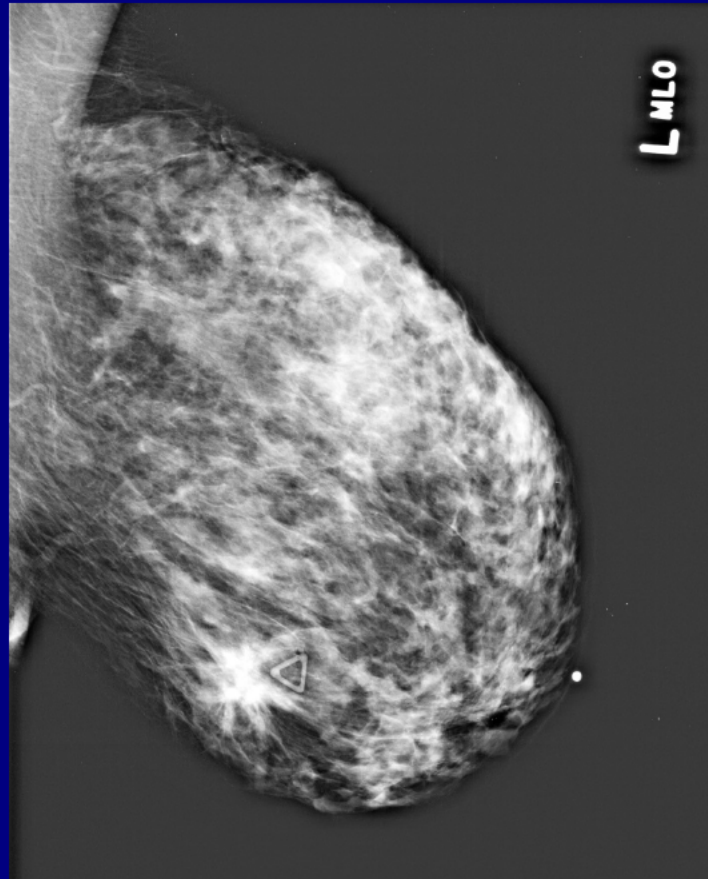
Adrenal Cortical Carcinoma

Tracy Chandler, MD
University of British Columbia
Vancouver, Canada

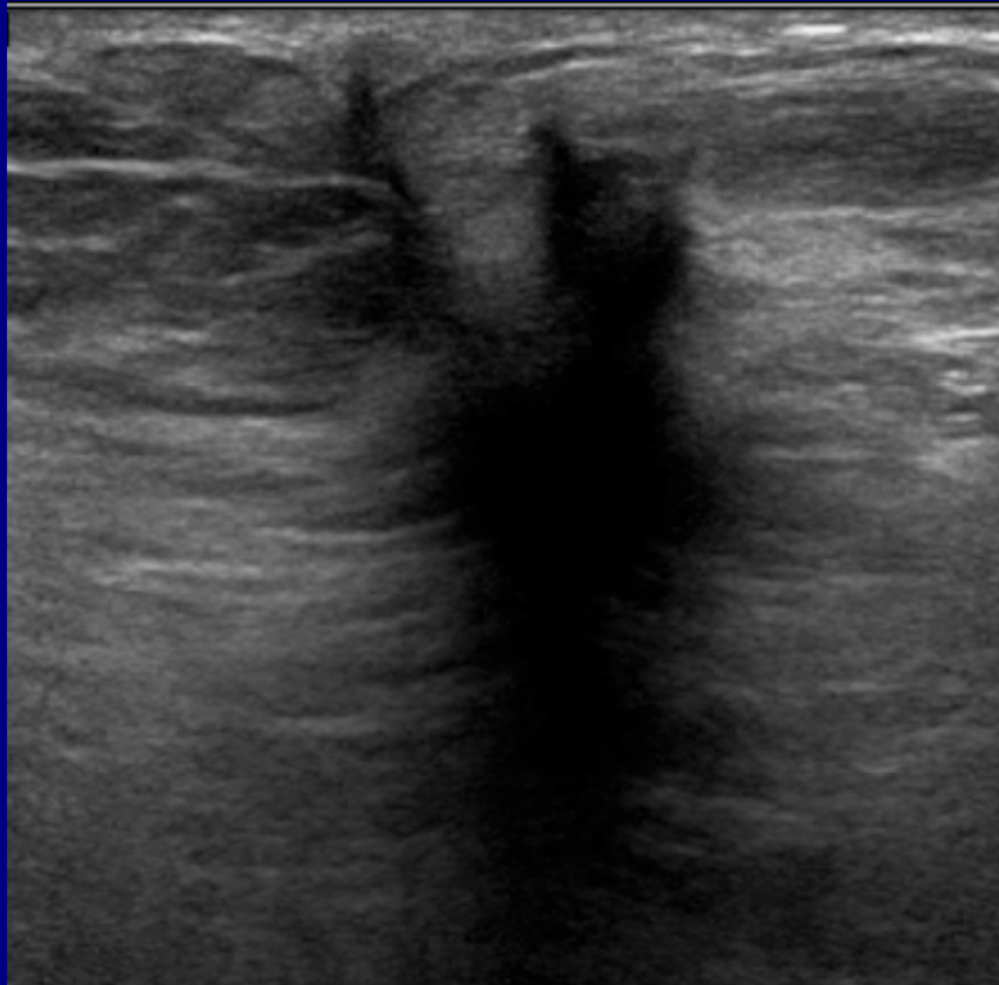
Breast Best Case

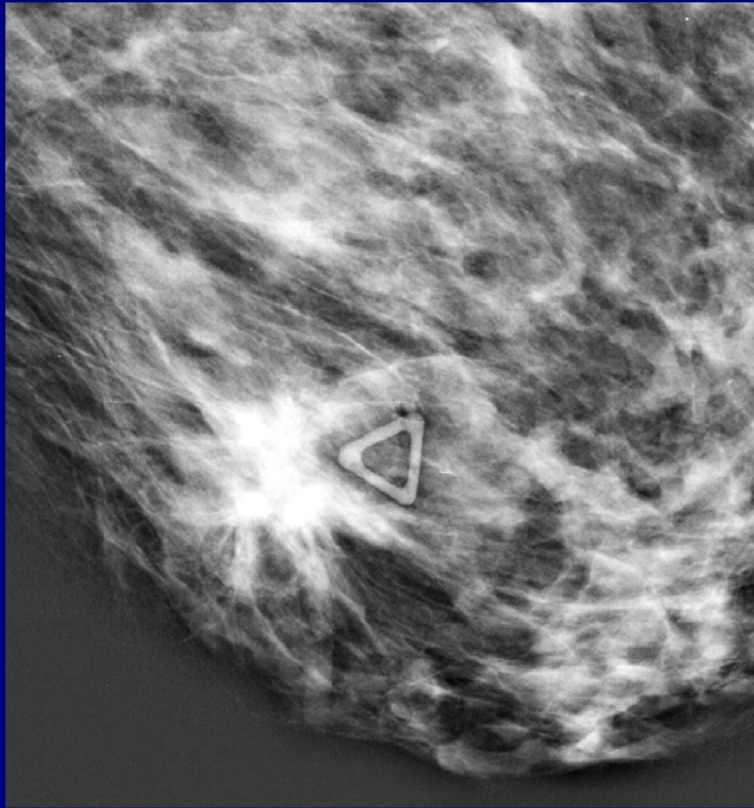
69 year old woman with no personal or close family history of breast cancer presented with tenderness and fullness in the left breast for one year with palpable mass which, per patient, had not changed in size over the preceding 3-5 months.

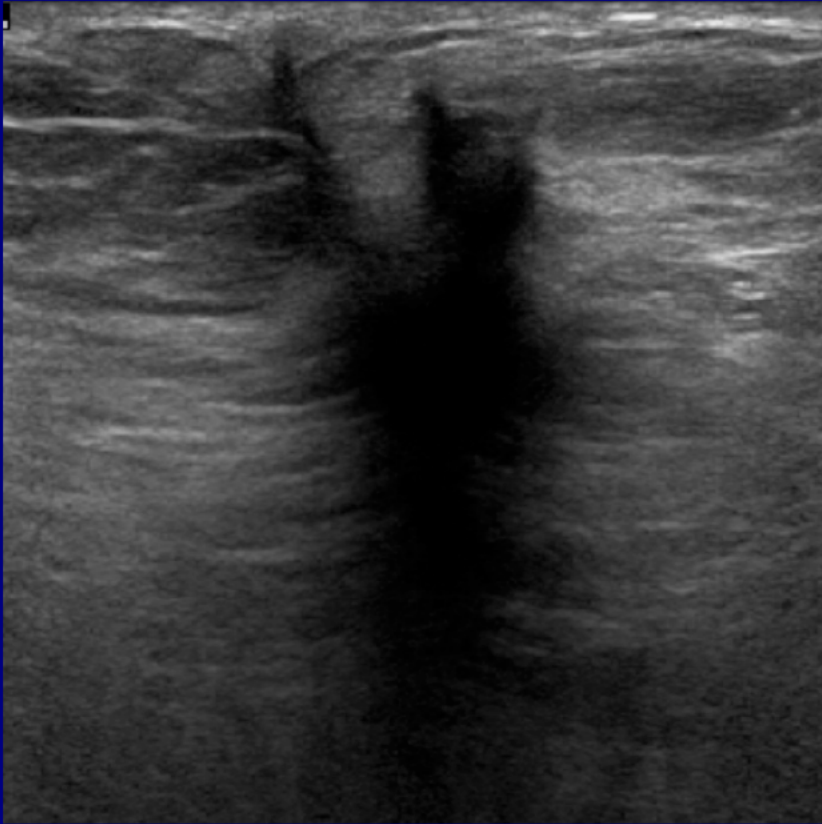
Diagnostic Mammogram LT MLO

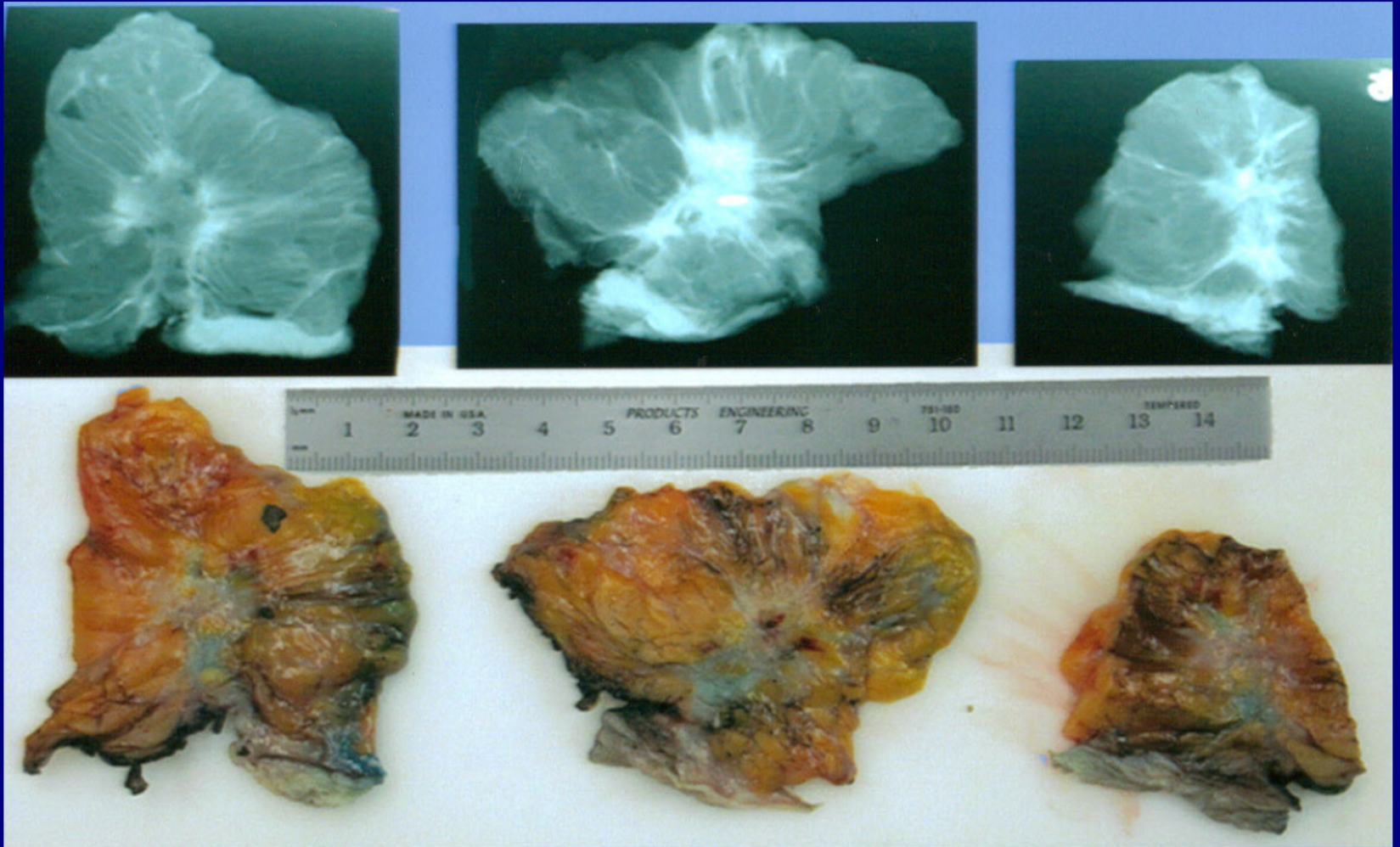


Ultrasound of Palpable Area









Infiltrating Lobular Carcinoma

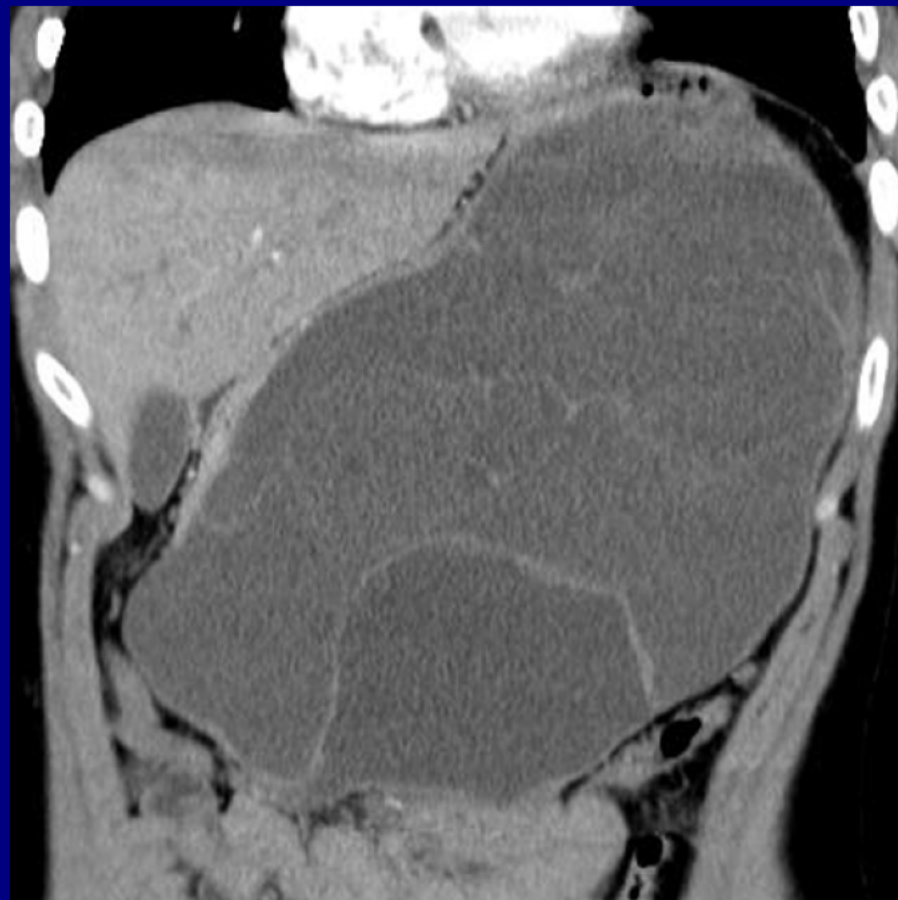
Sonja Parisek, MD

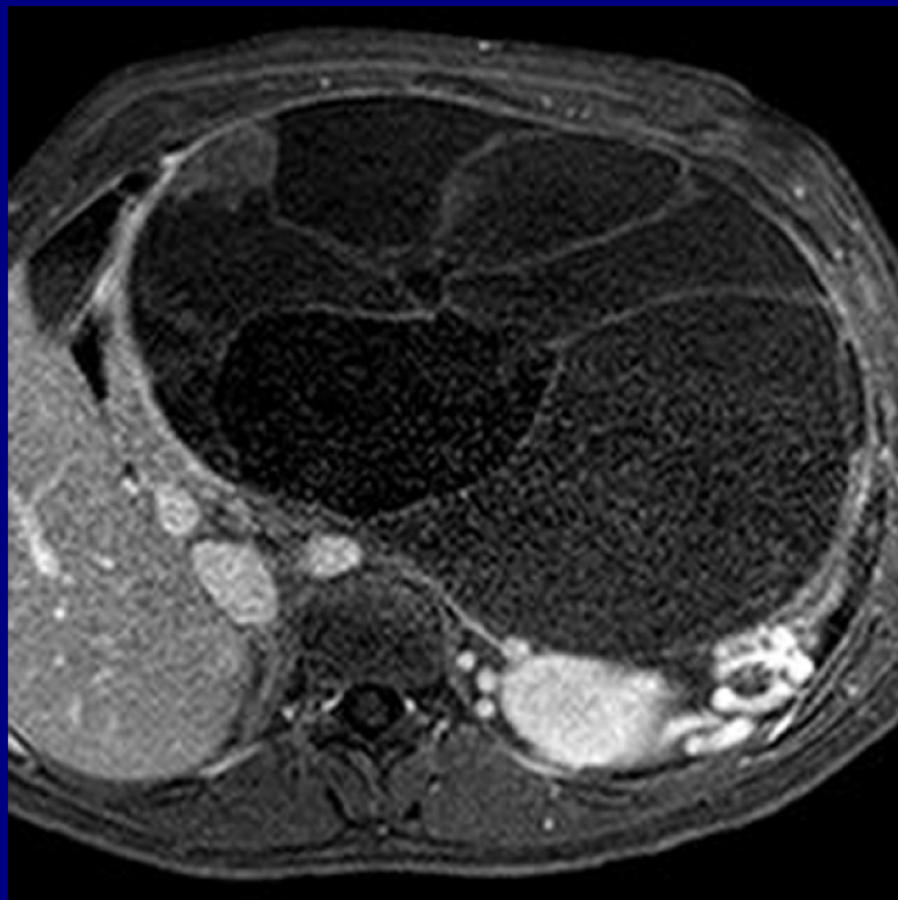
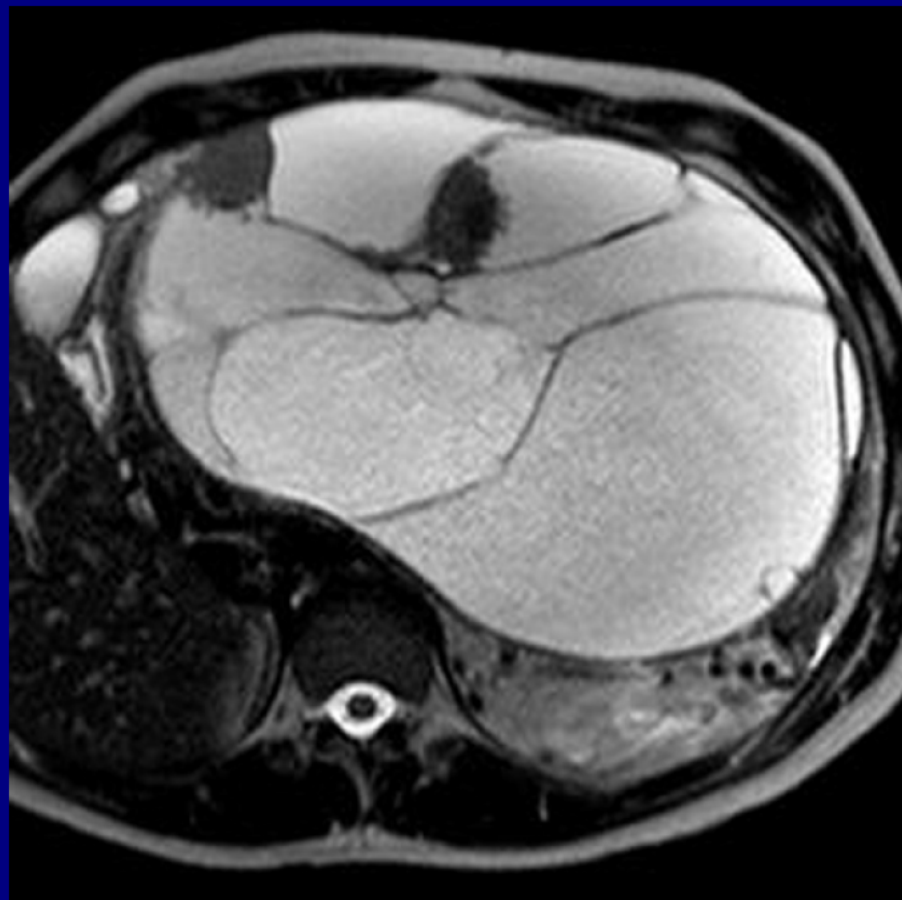
David Grant USAF Medical Center

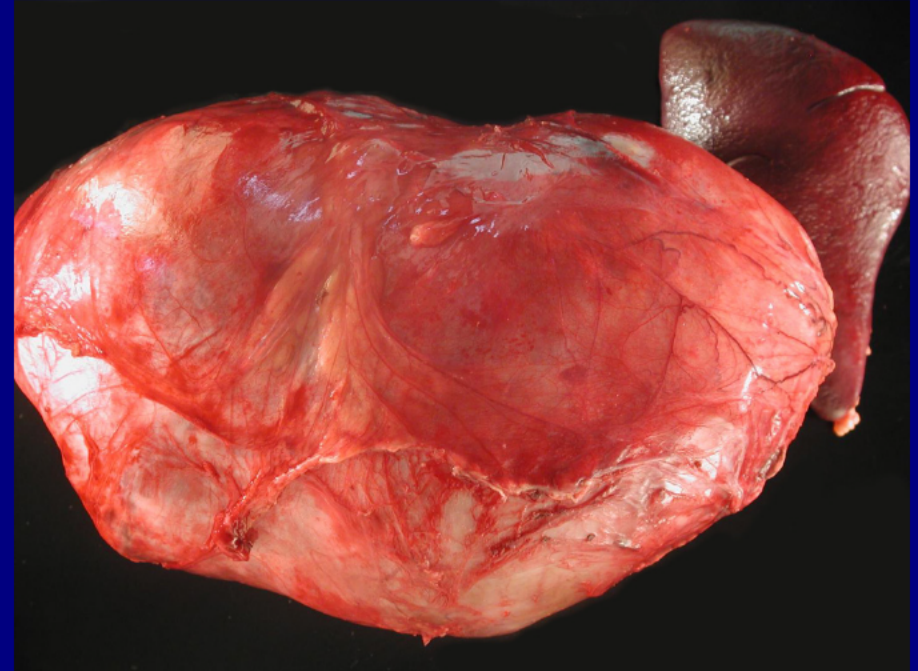
Fairfield, California

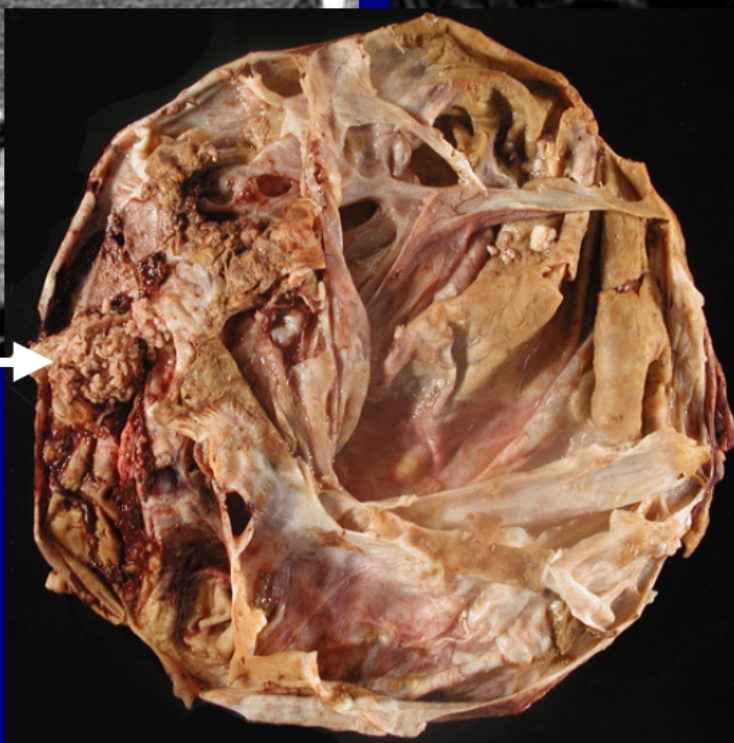
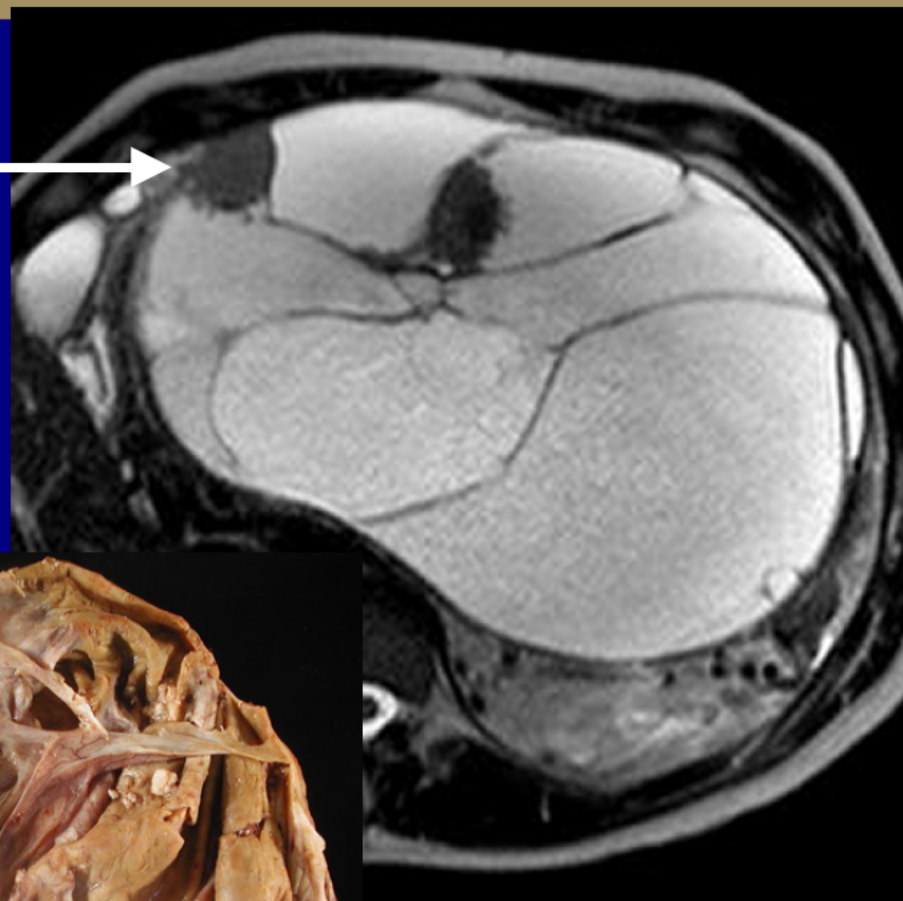
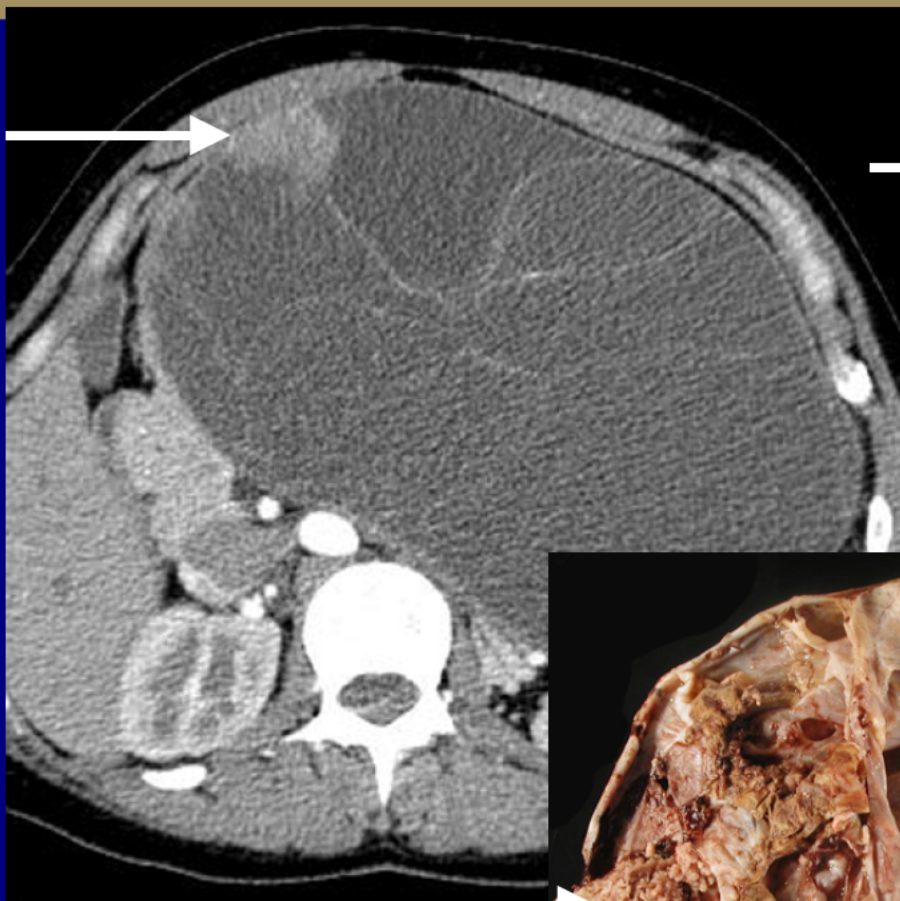
Gastrointestinal Best Case

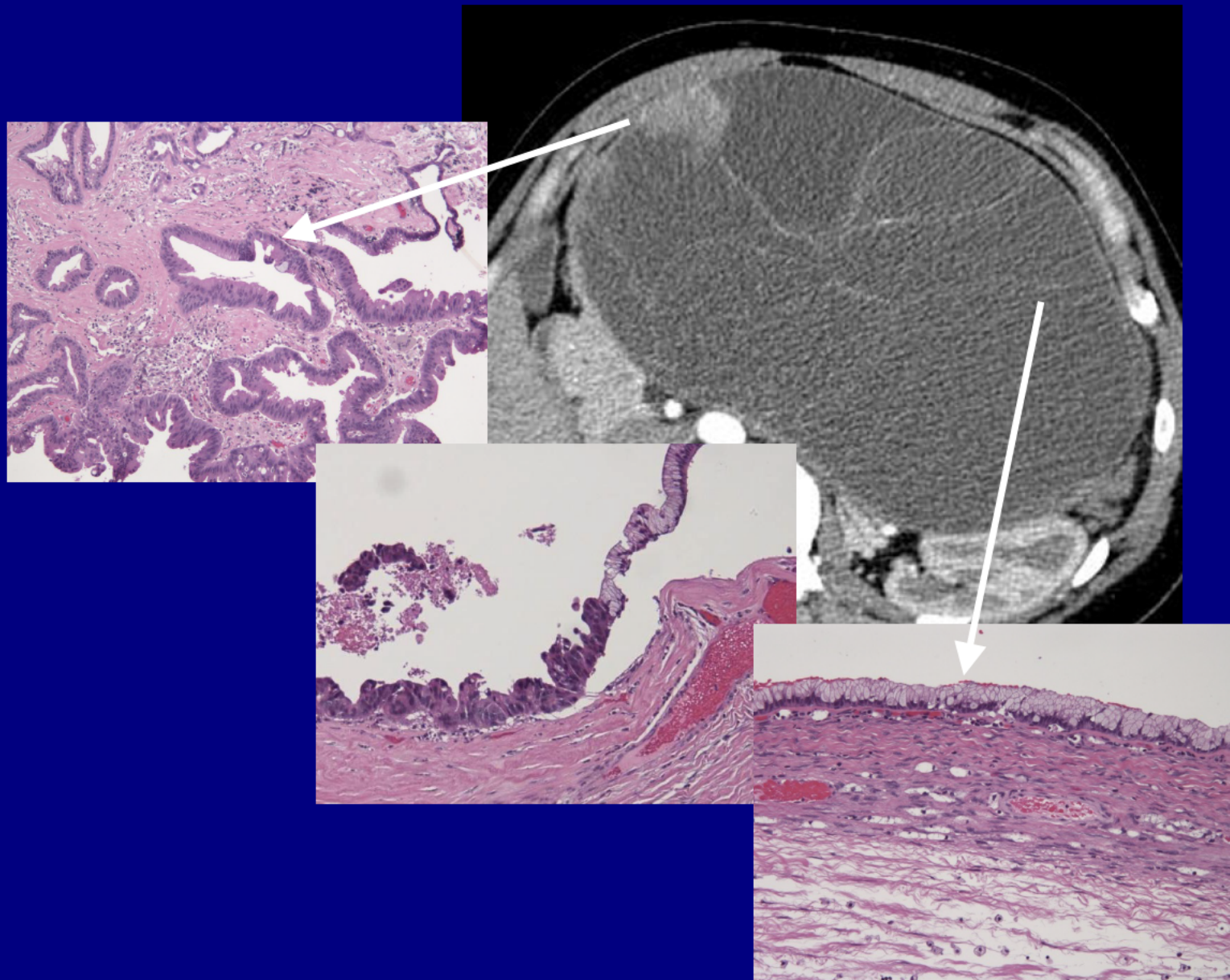
28-year-old female complaining of early satiety, increased abdominal girth, and increased esophageal reflux symptoms over the past year.











Pancreatic Mucinous Cystic Neoplasm

Marcus Kirkpatrick, MD
University of Nebraska Medical Center,
Omaha, Nebraska

Many thanks to all of you for submitting
such great cases!
Have a safe trip home –

From the staff of the
American Institute for Radiologic Pathology