

Best Cases of the AIRP

February 4 – March 1, 2013

Musculoskeletal Best Case

73-year-old woman with left calf
mass for several years





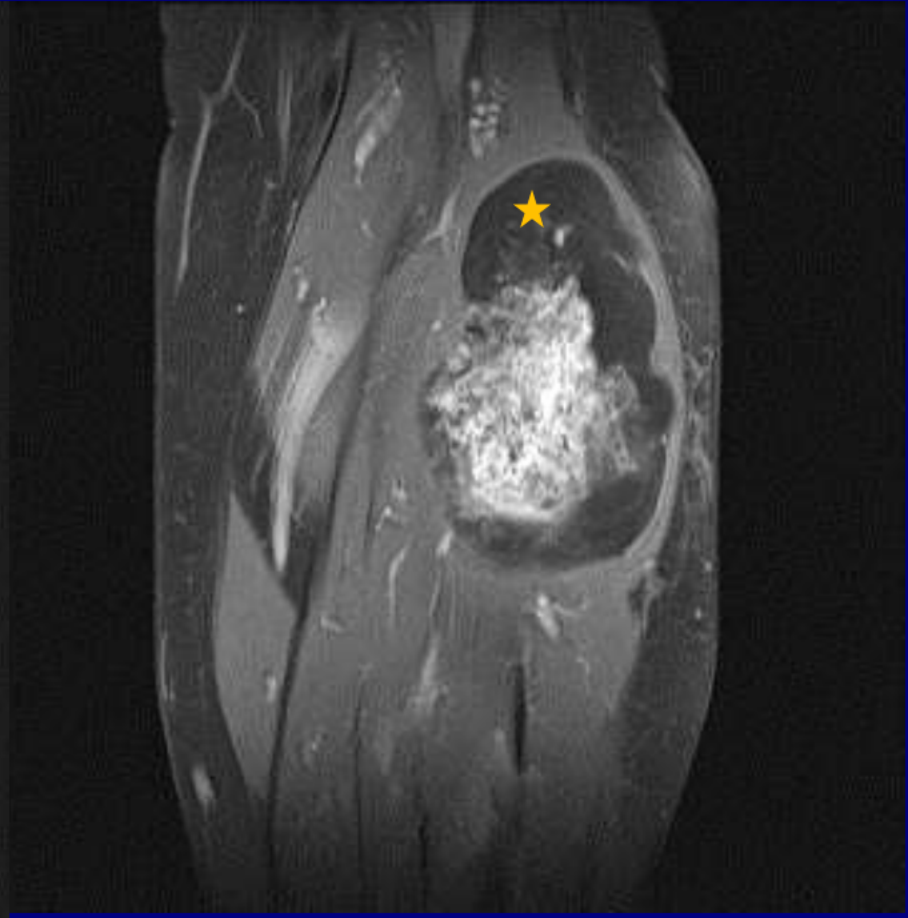




T1



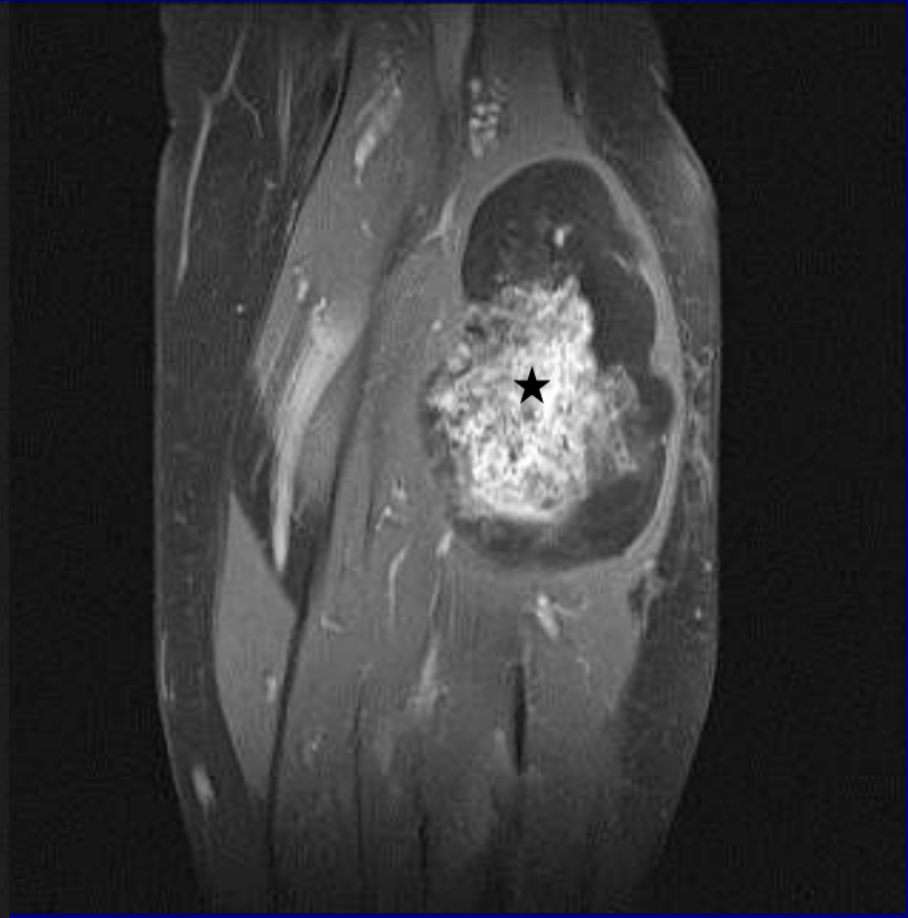
T1 FS Gd



T1



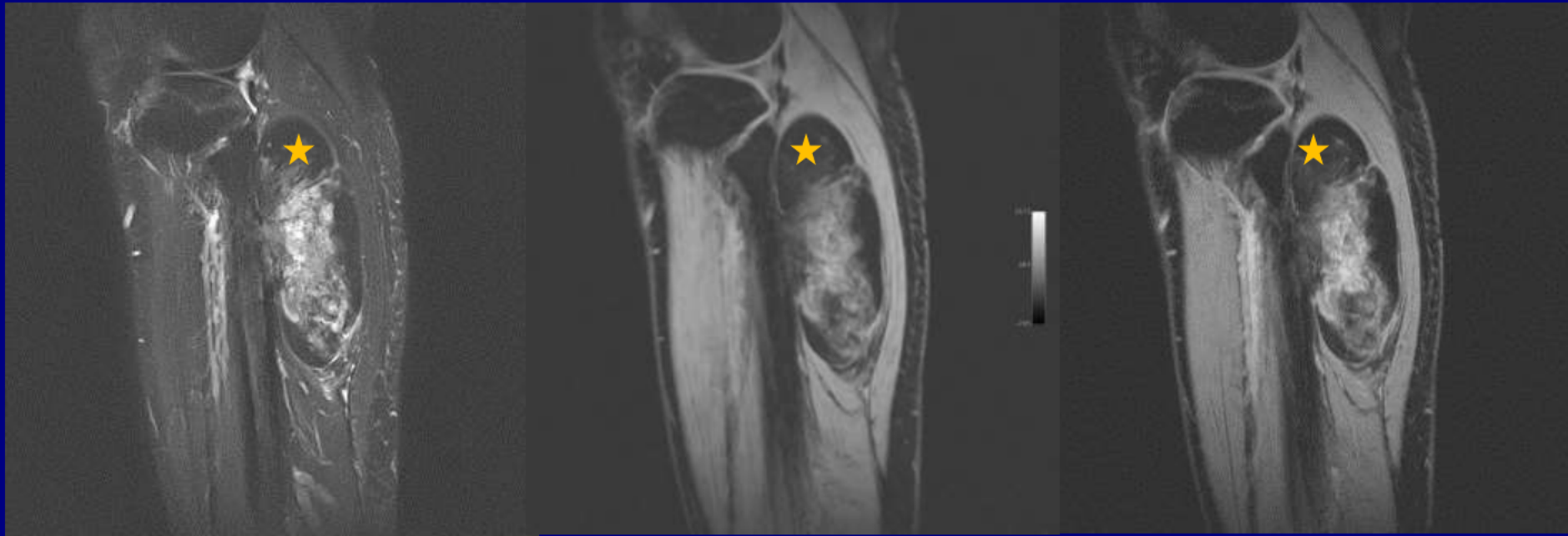
T1 FS Gd



T2 FS

T1 FS

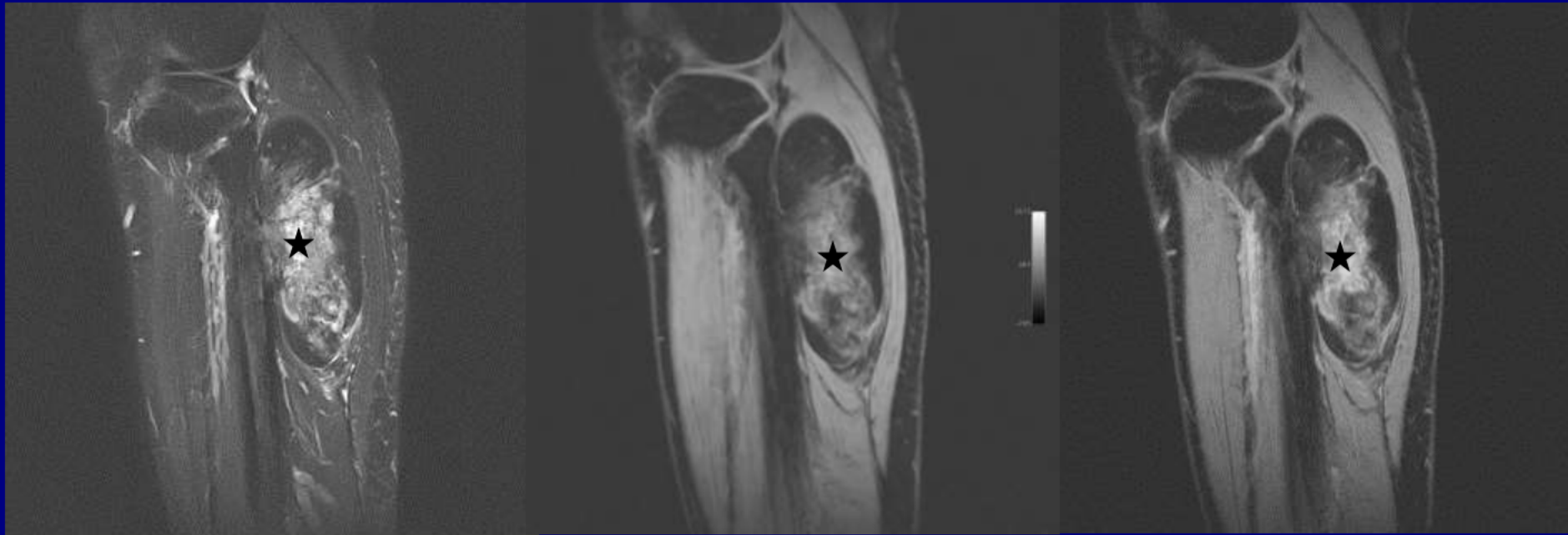
T1 FS Gd



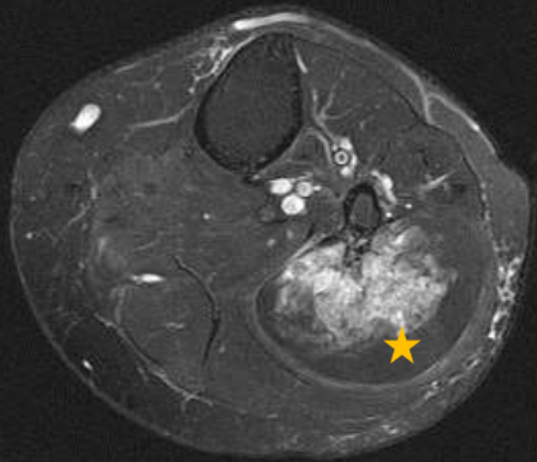
T2 FS

T1 FS

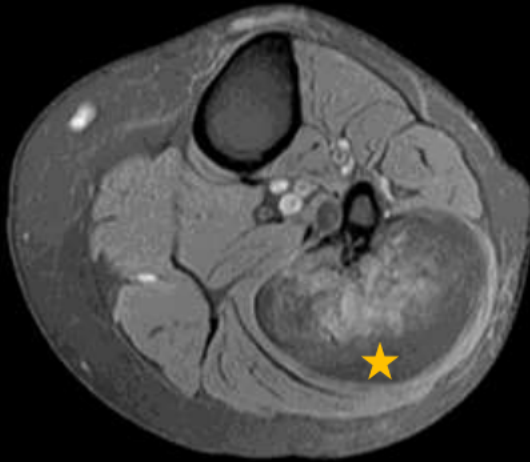
T1 FS Gd



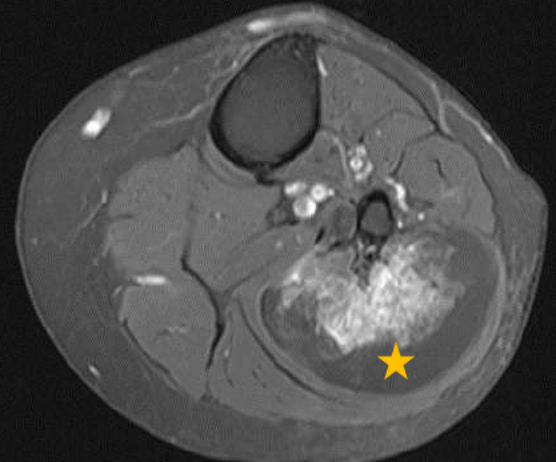
T2 FS



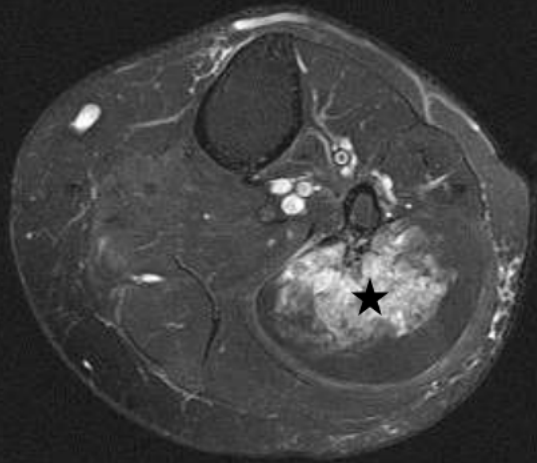
T1 FS



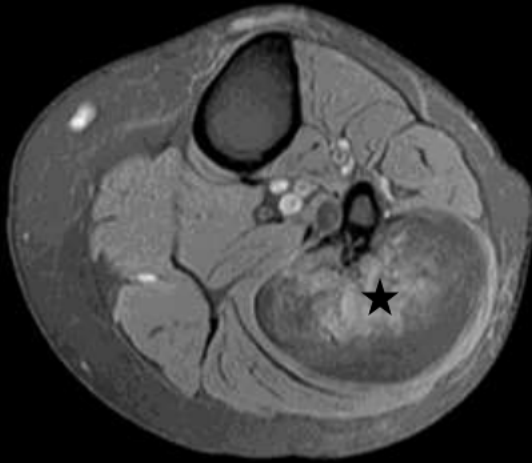
T1 FS Gd



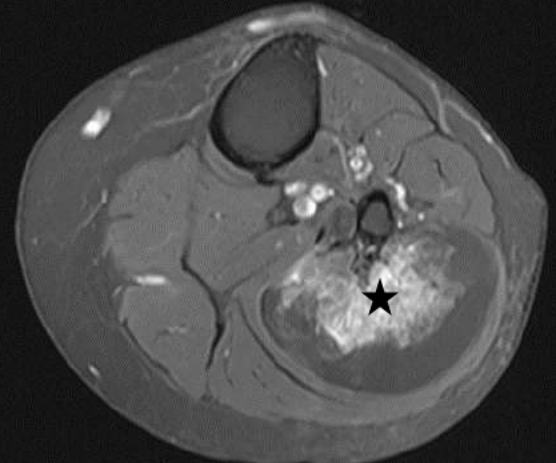
T2 FS

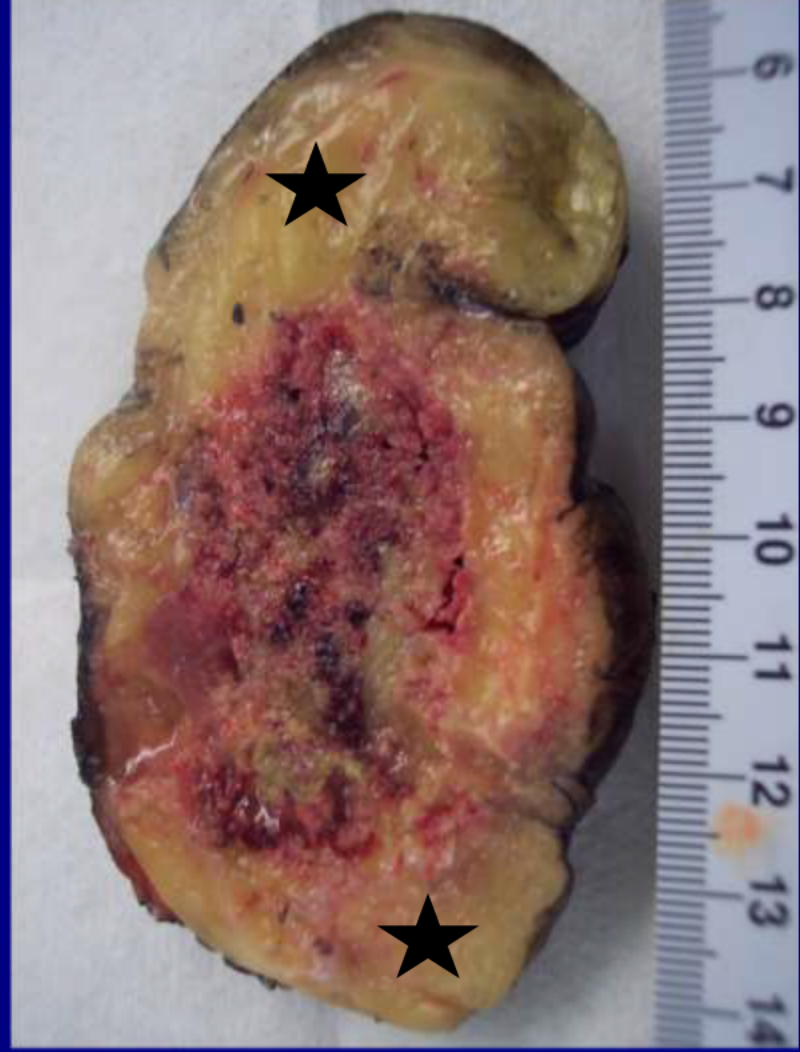


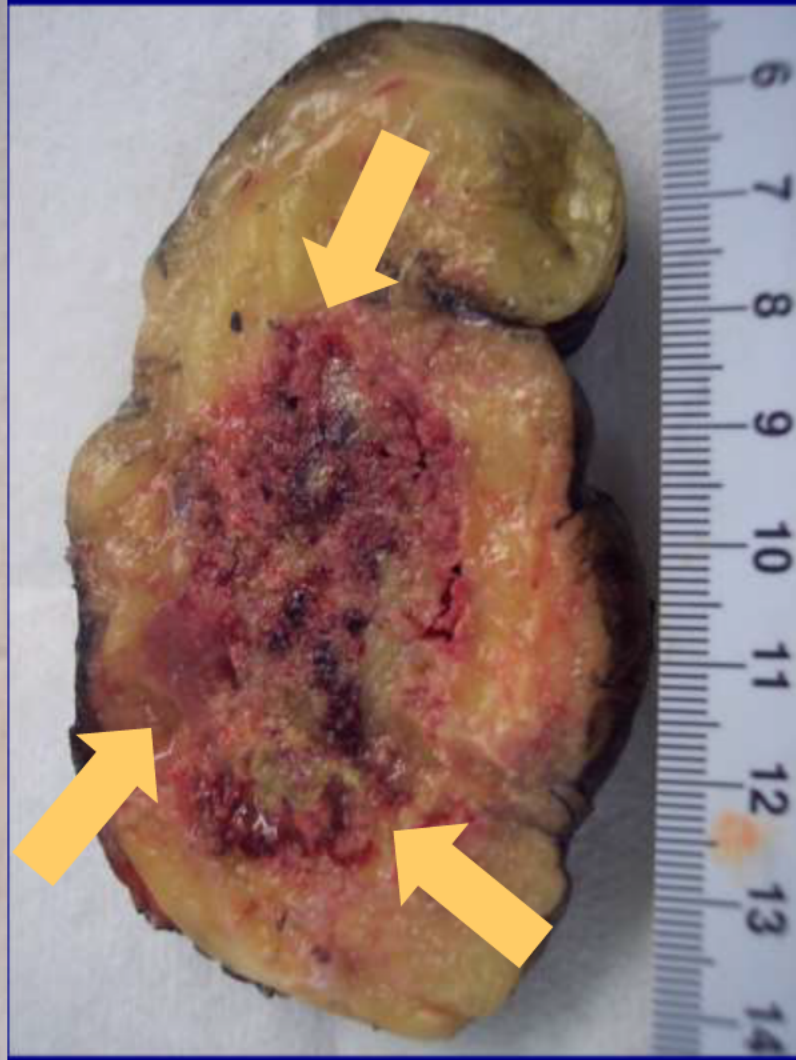
T1 FS

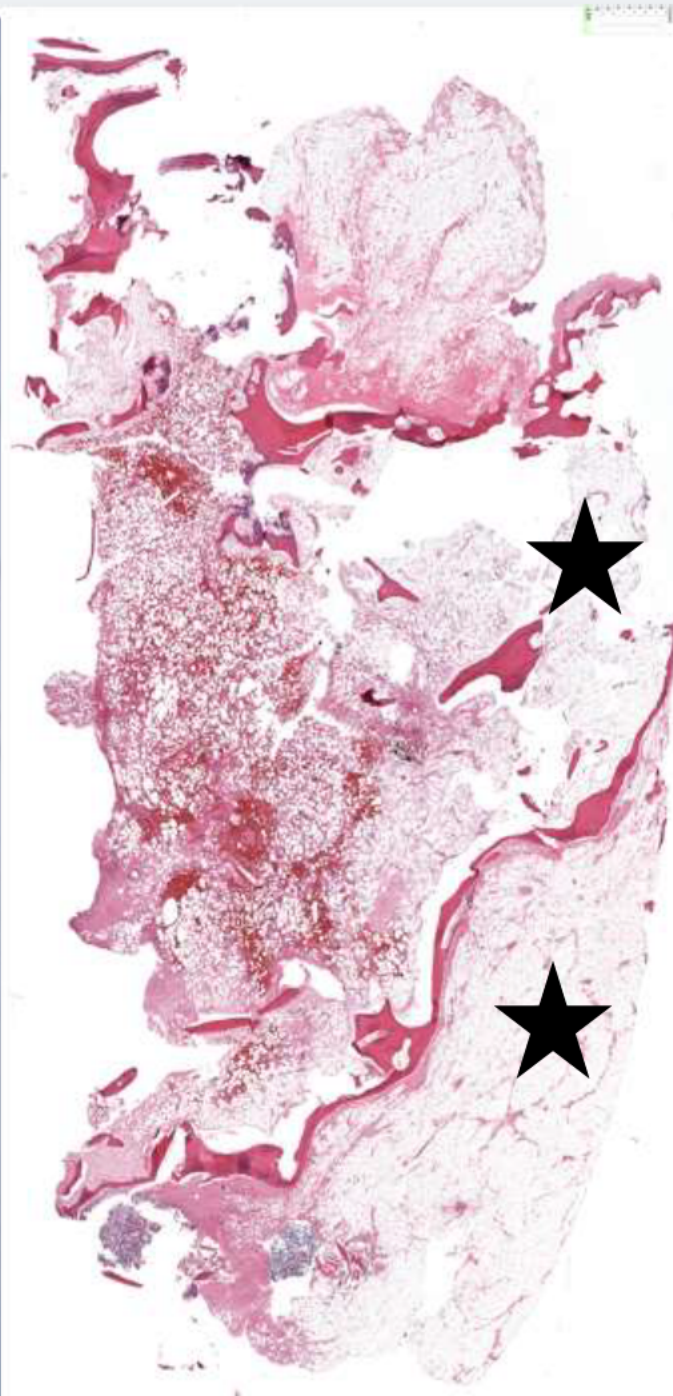
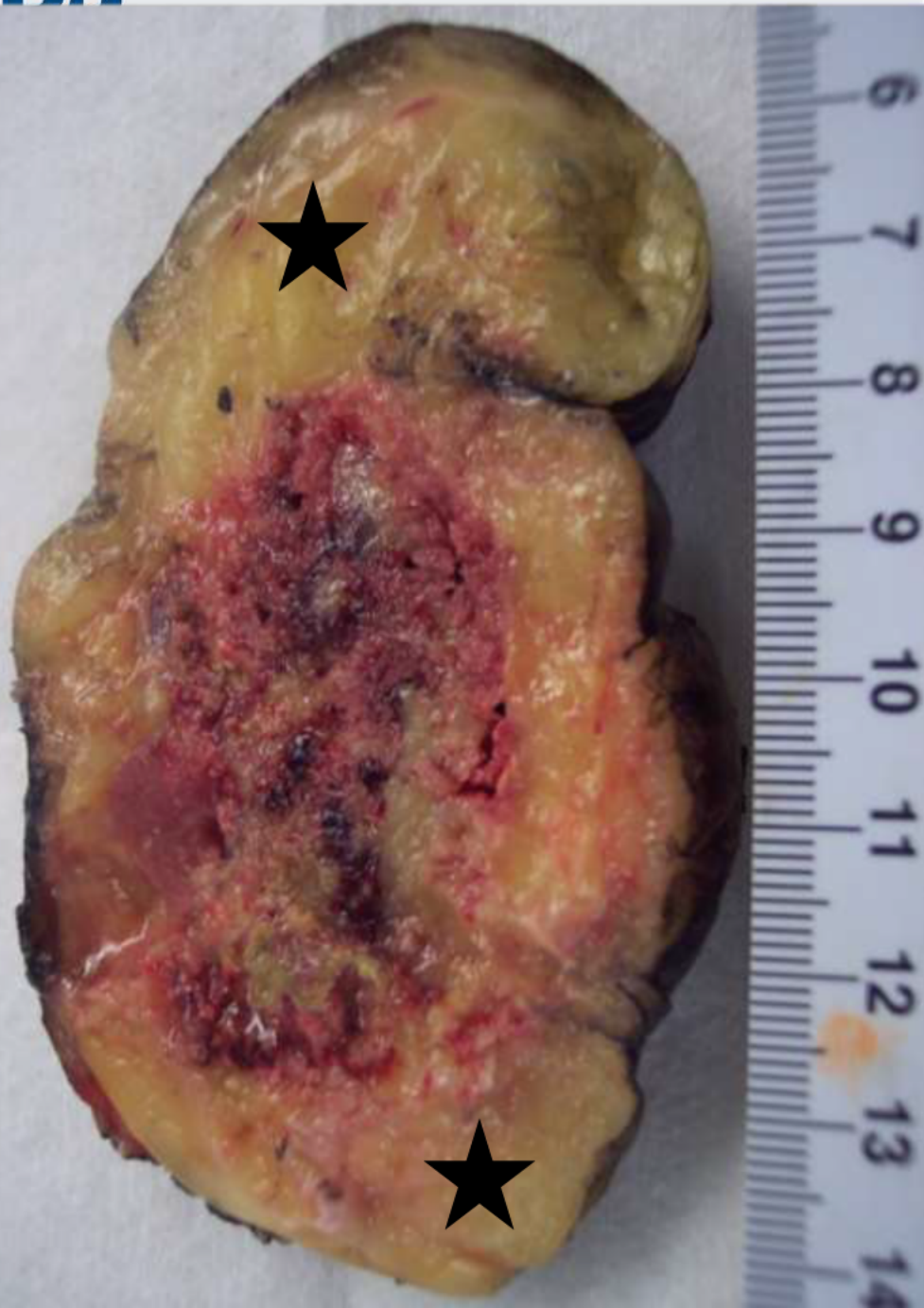


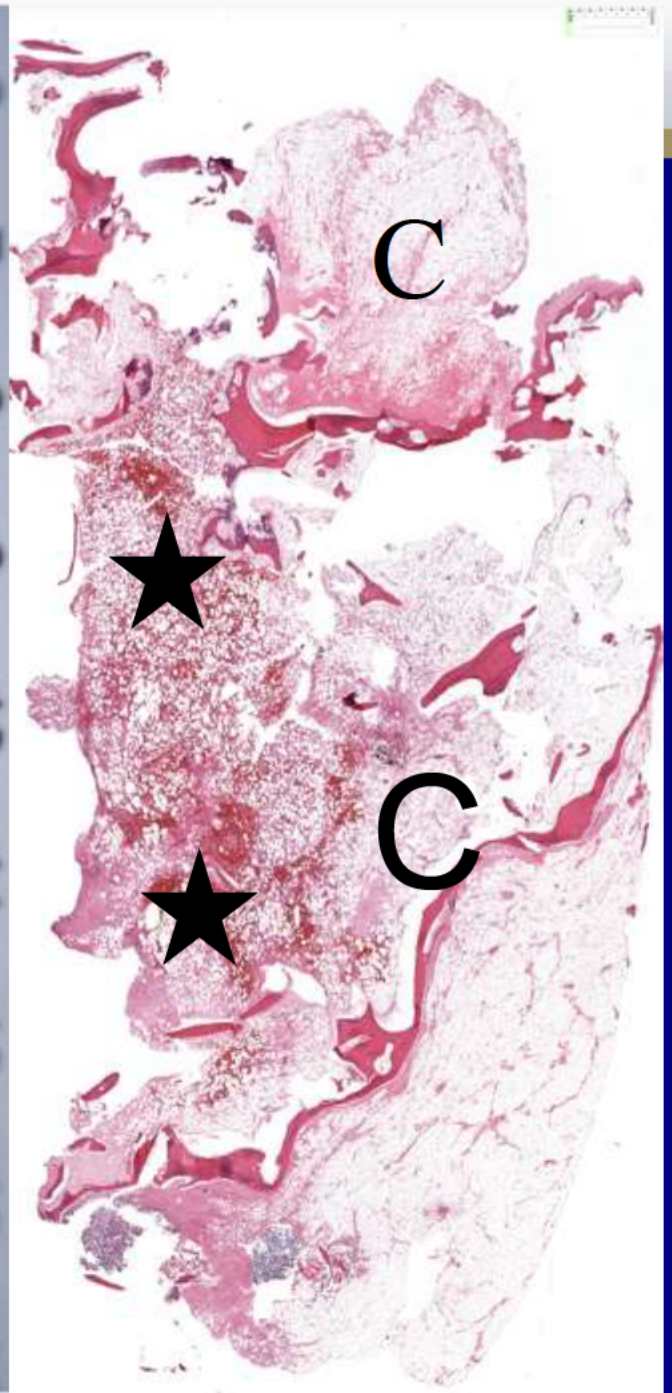
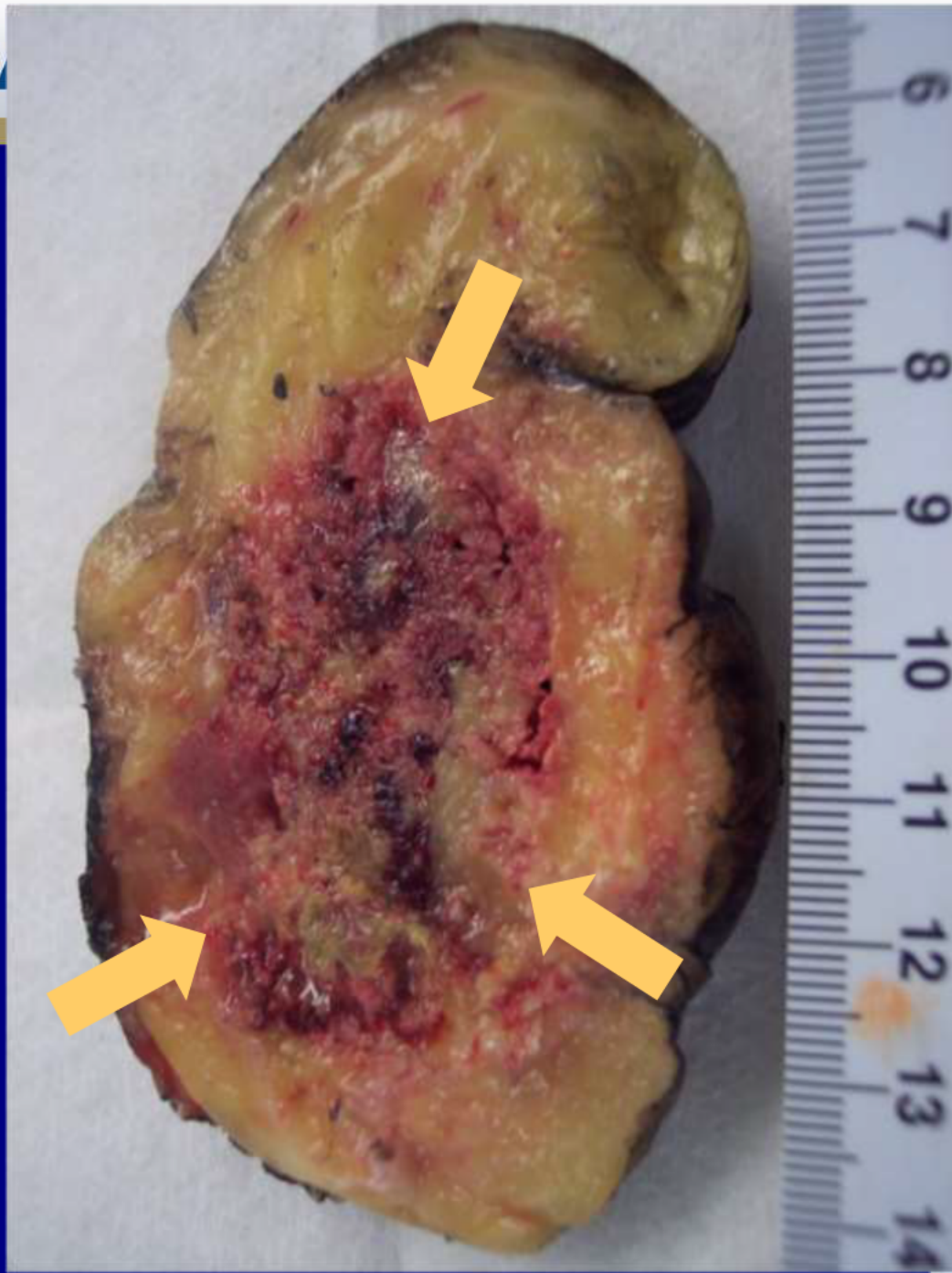
T1 FS Gd

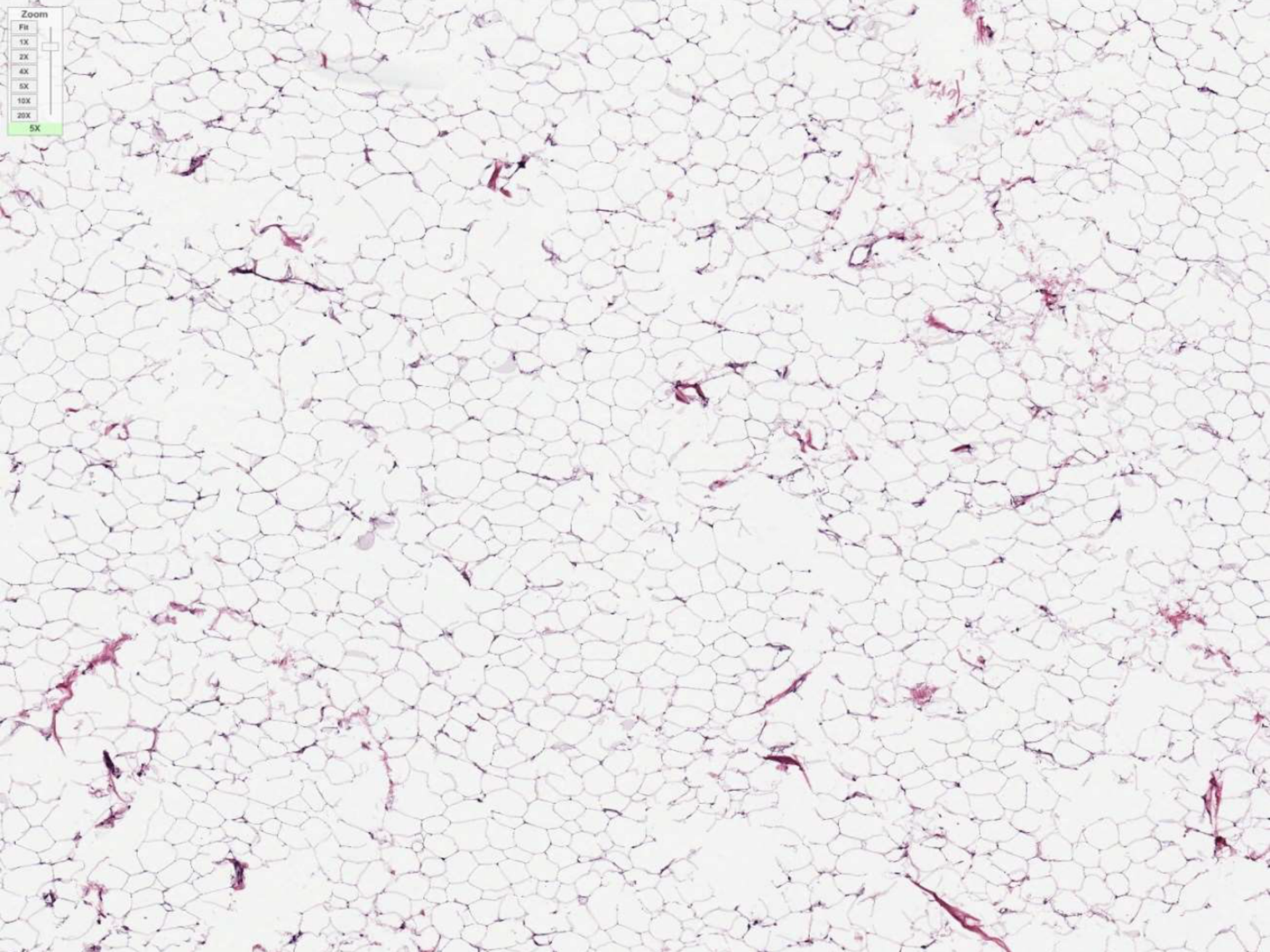


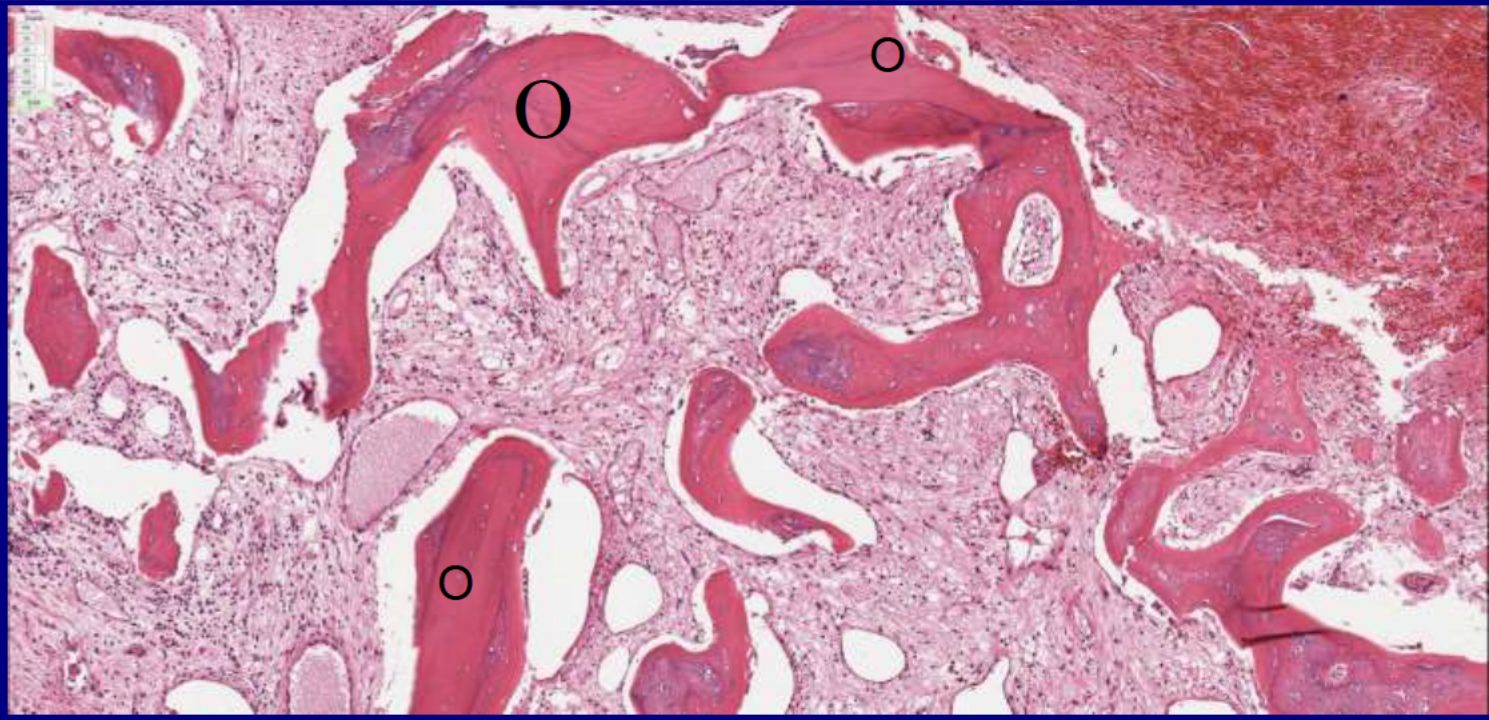
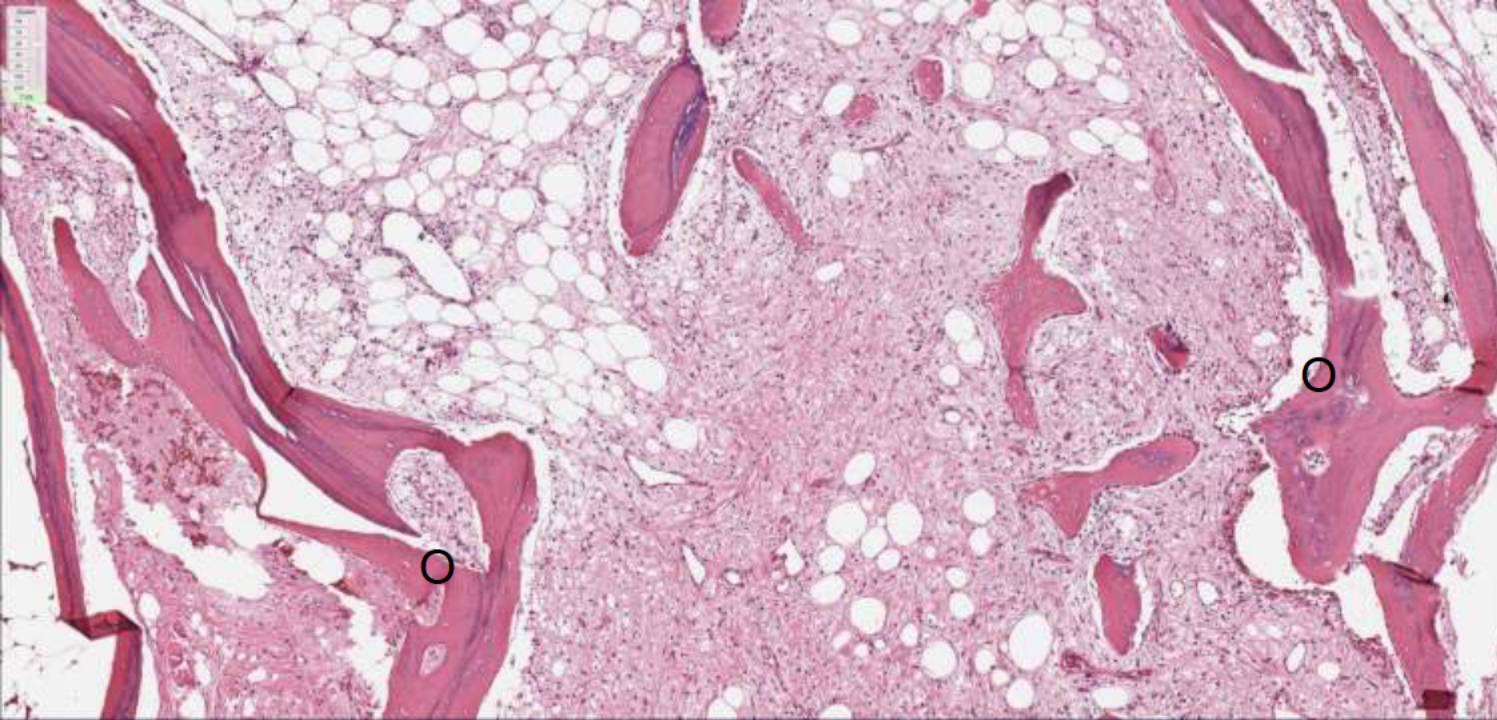


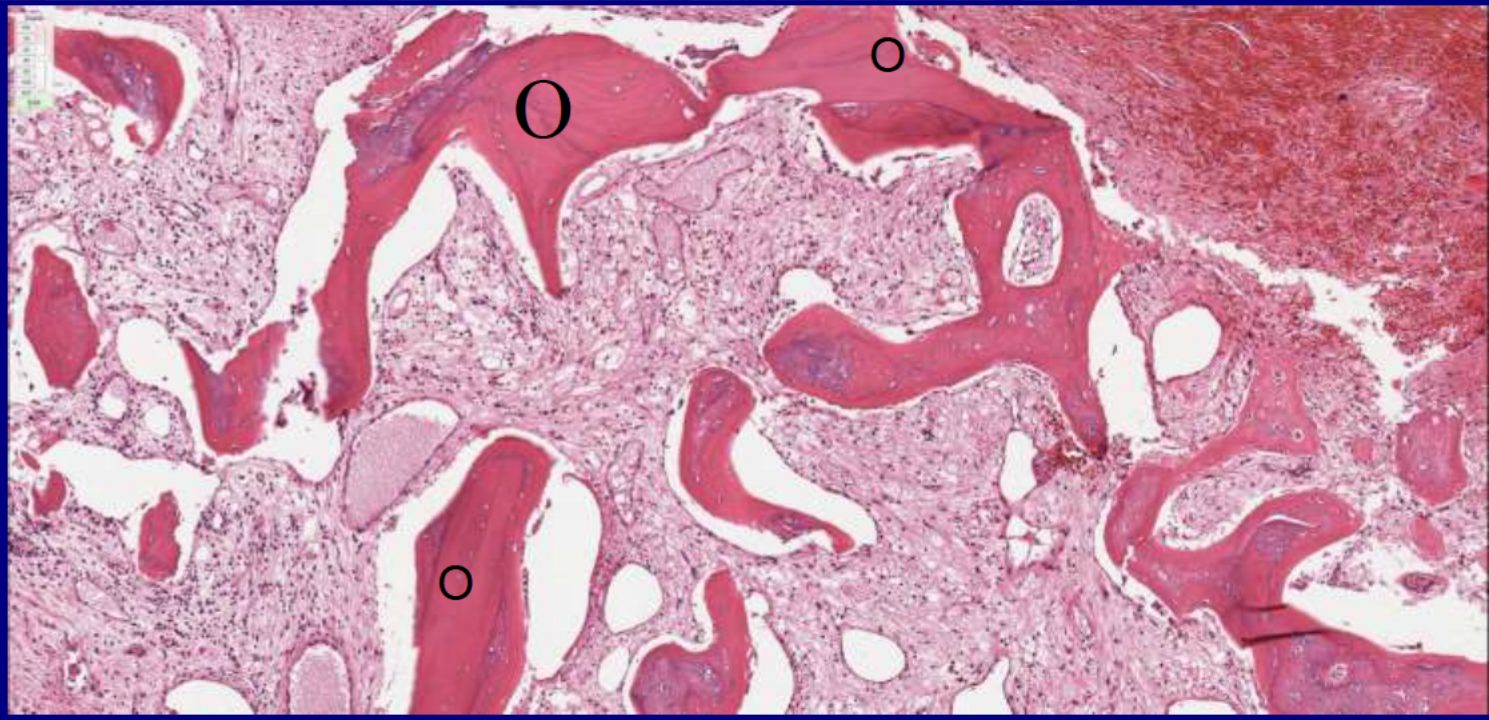
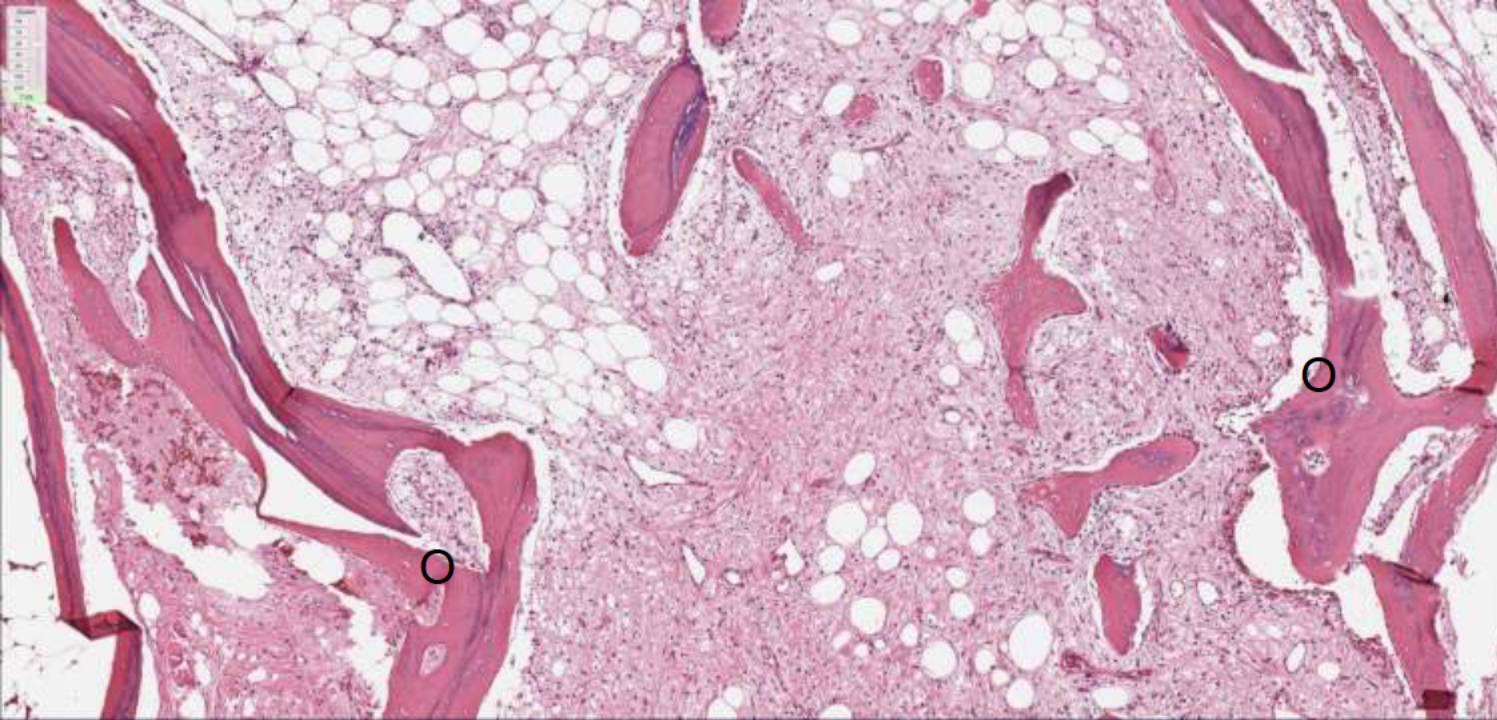












Parosteal Lipoma

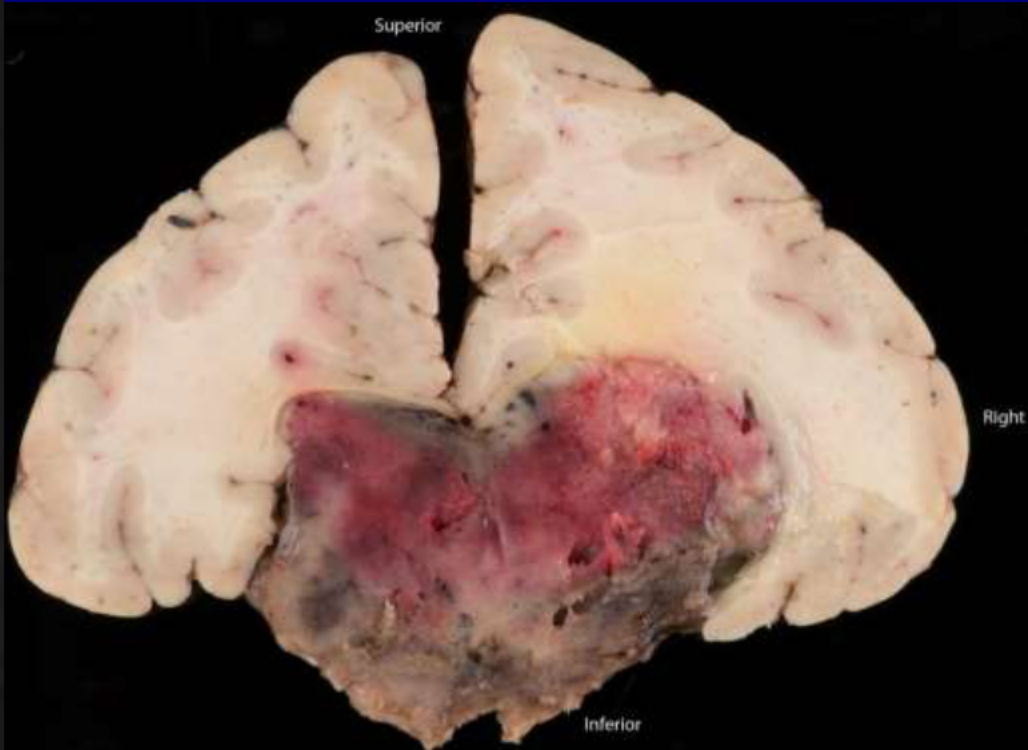
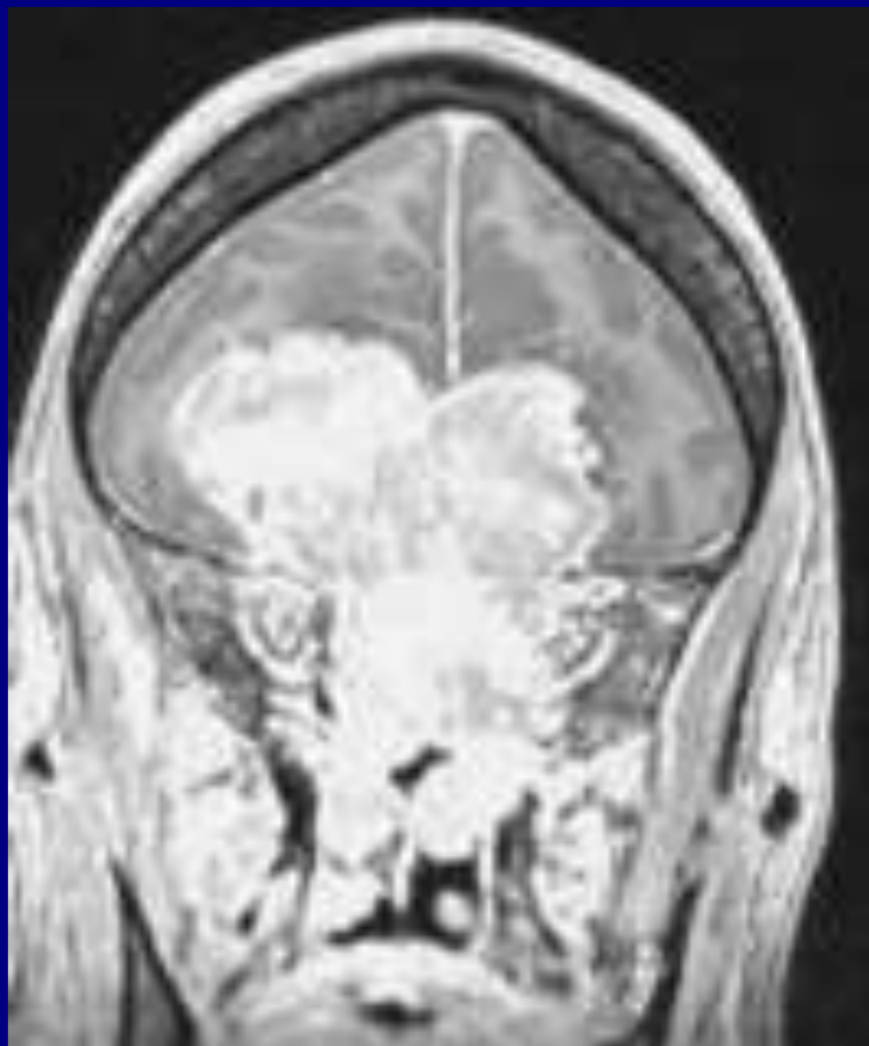
Prashant Shresha, MD

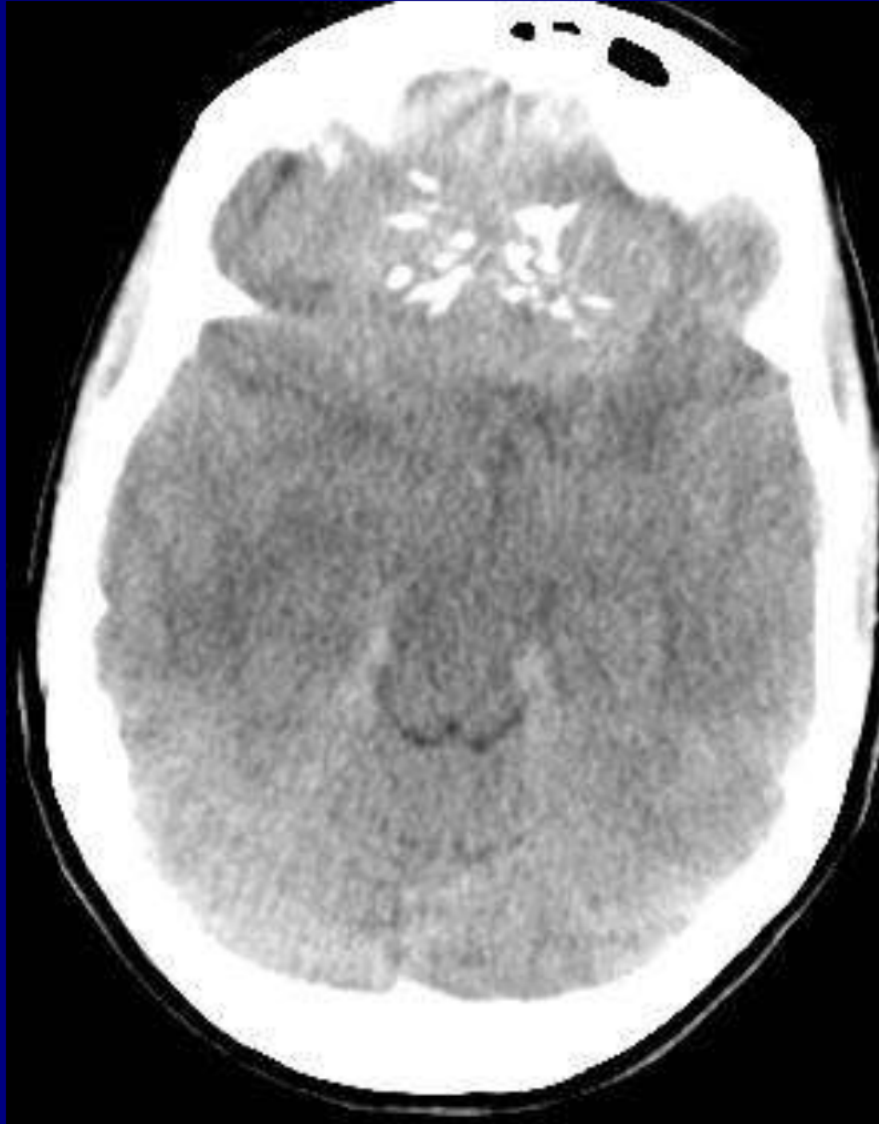
University of Minnesota Medical School

Minneapolis, Minnesota

Neuroradiology Best Case

Previously healthy 52-year-old woman presented with about 1-year history of lethargy and chronic headaches. She has experienced some loss of sensation of smell and hemoptysis, and about a 25 pound weight loss. Her husband noticed behavioral changes over the last 3 to 6 months.





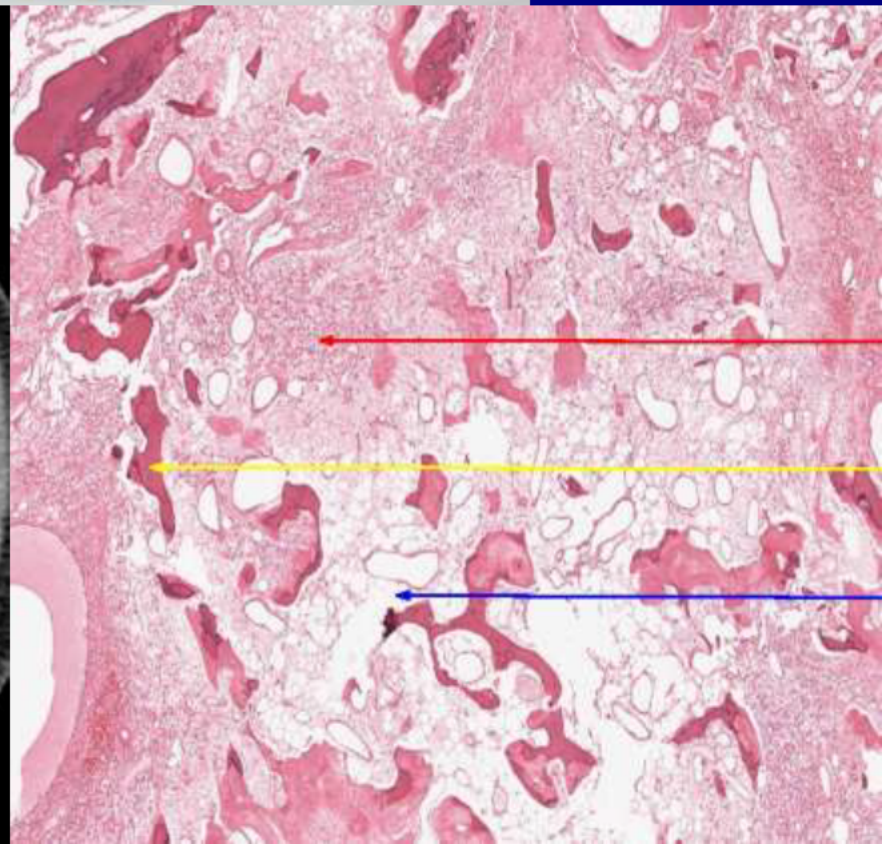
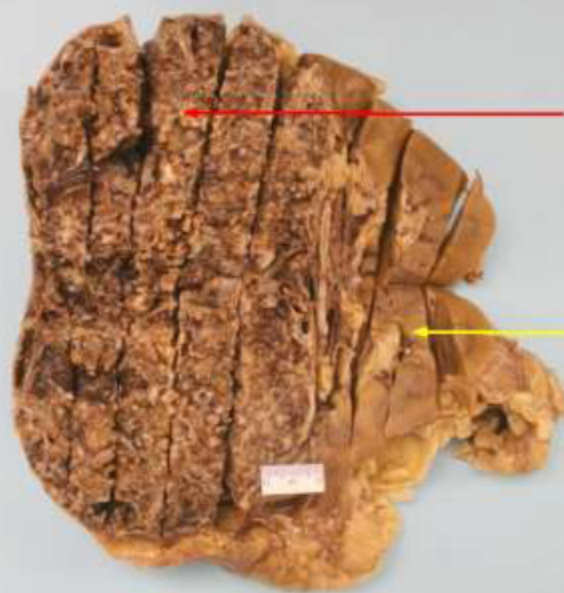
Enthesioneuroblastoma

Winnie Fu, MD
University of Calgary
Alberta, Canada

Genitourinary Best Case

37-year-old asymptomatic man with
incidental left renal mass on imaging

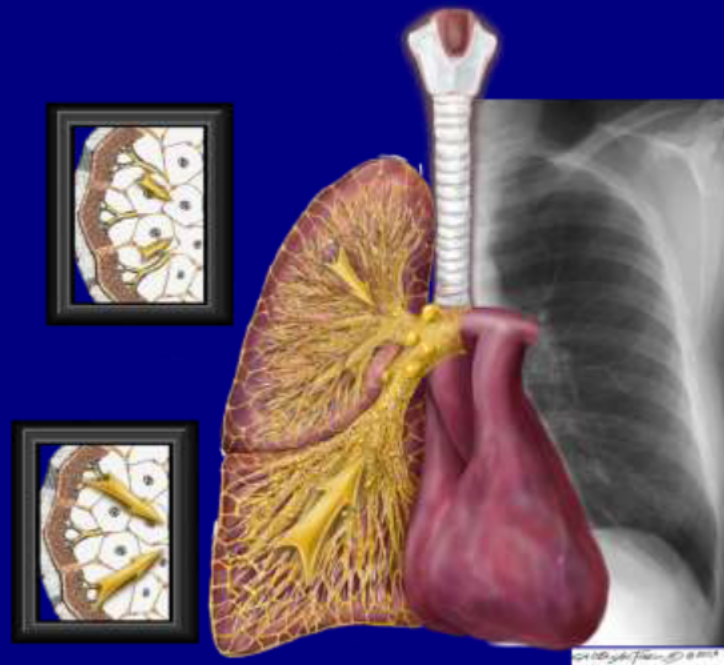




Conventional (Clear-Cell Type) Renal Cell Carcinoma with Extensive Osseous Metaplasia

Shivani Chaudhry, MD
University of Toronto
Toronto, Canada

PULMONARY AND MEDIASTINAL IMAGING

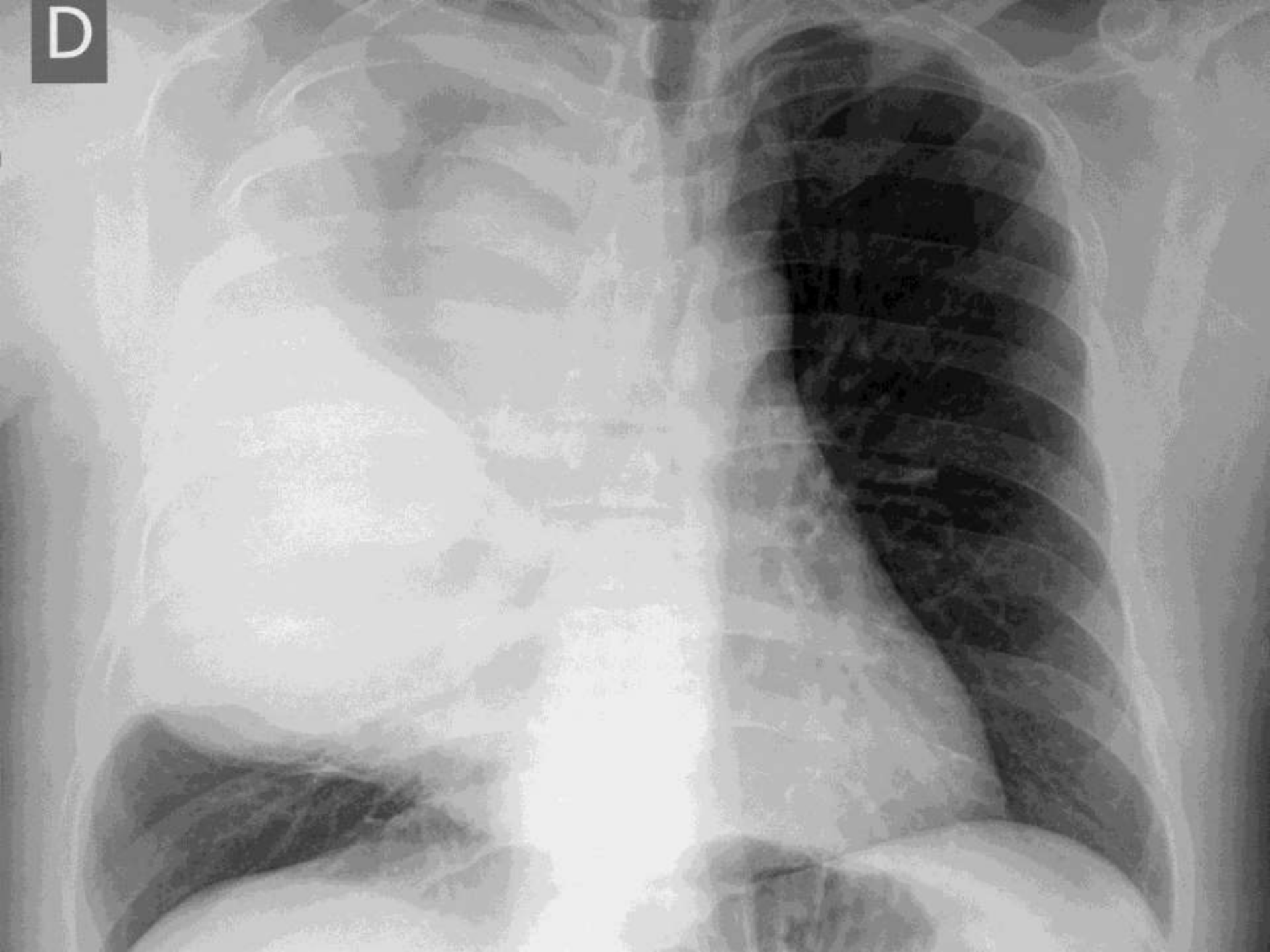


60-year-old man with cough and change
in the shape of his fingers

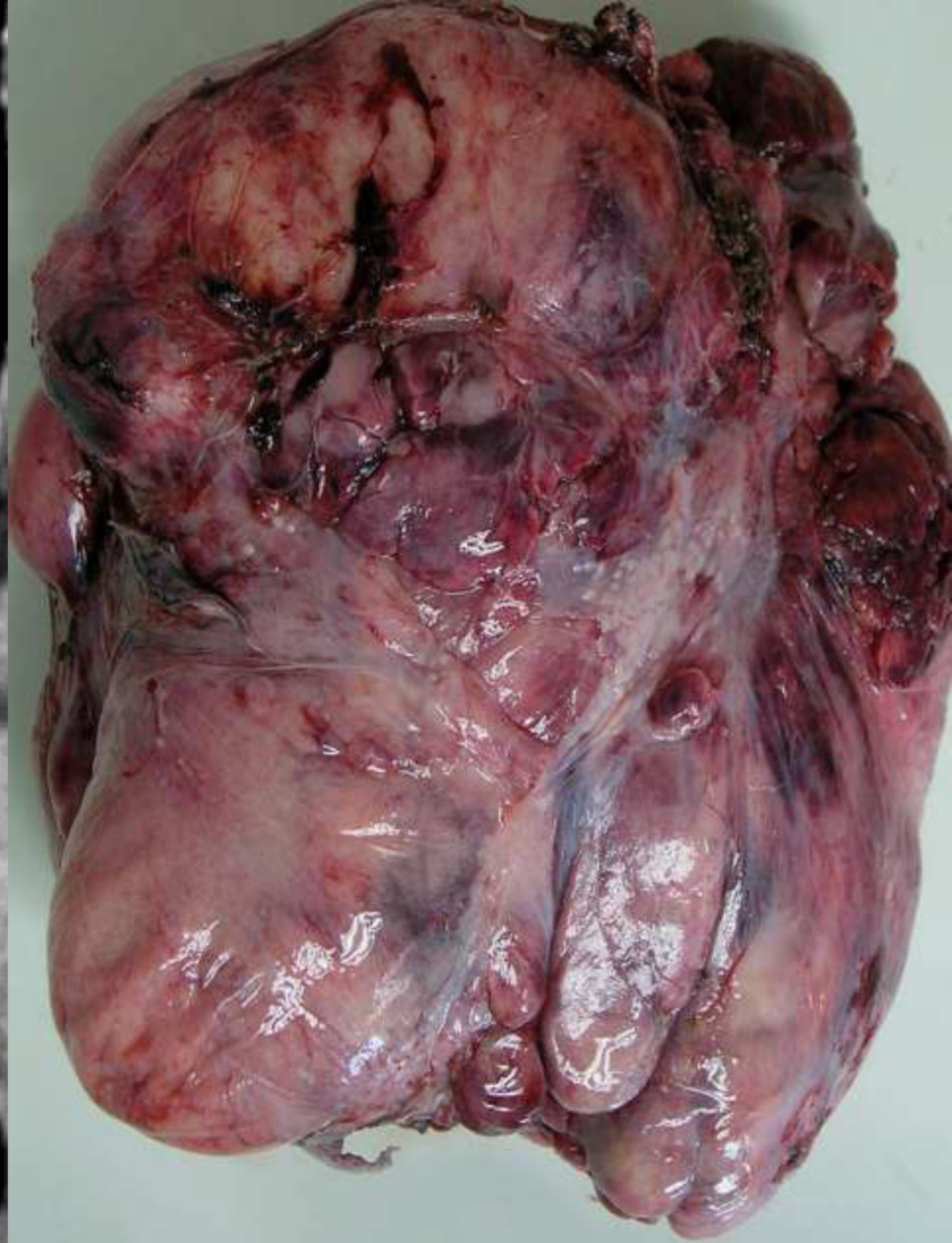
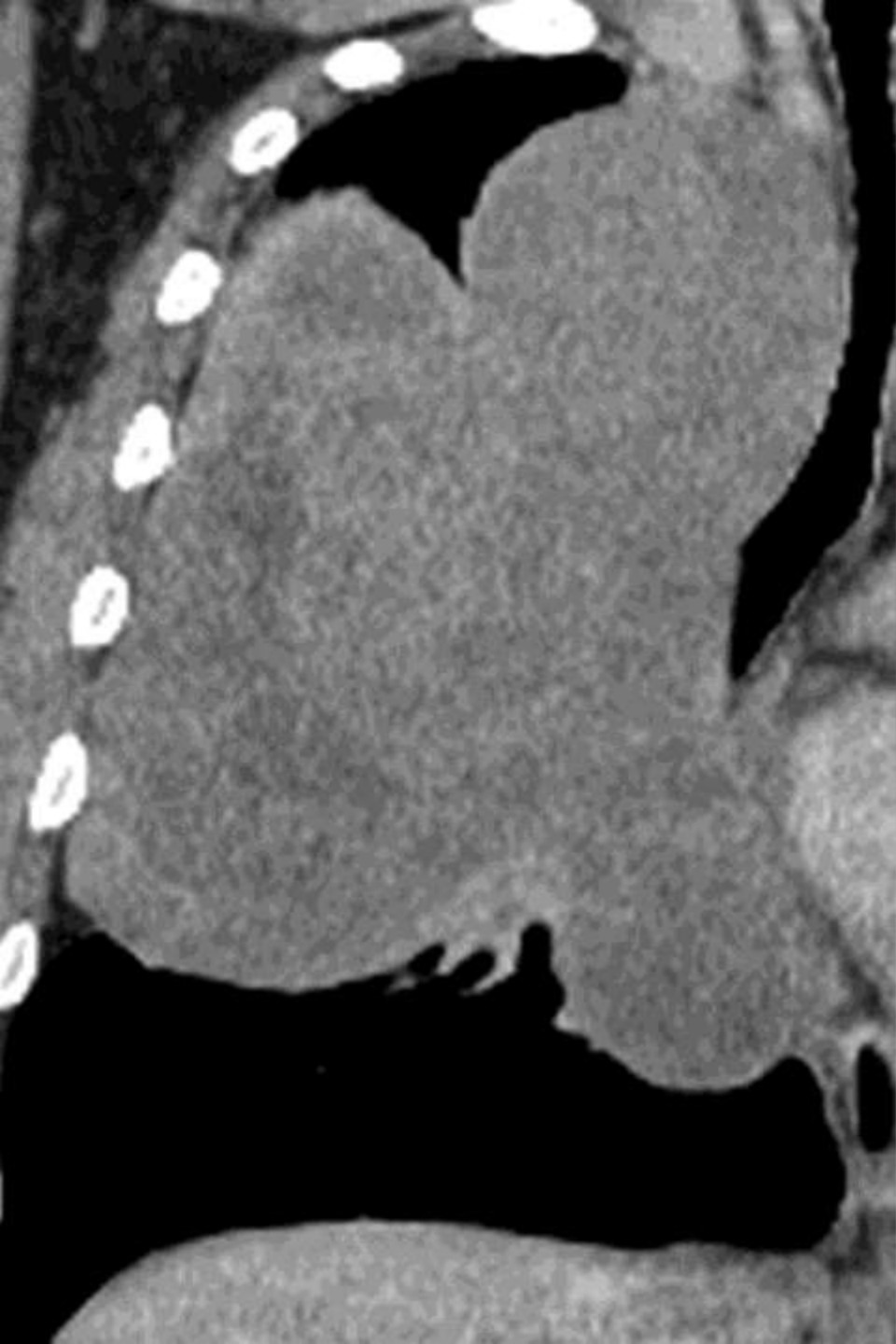


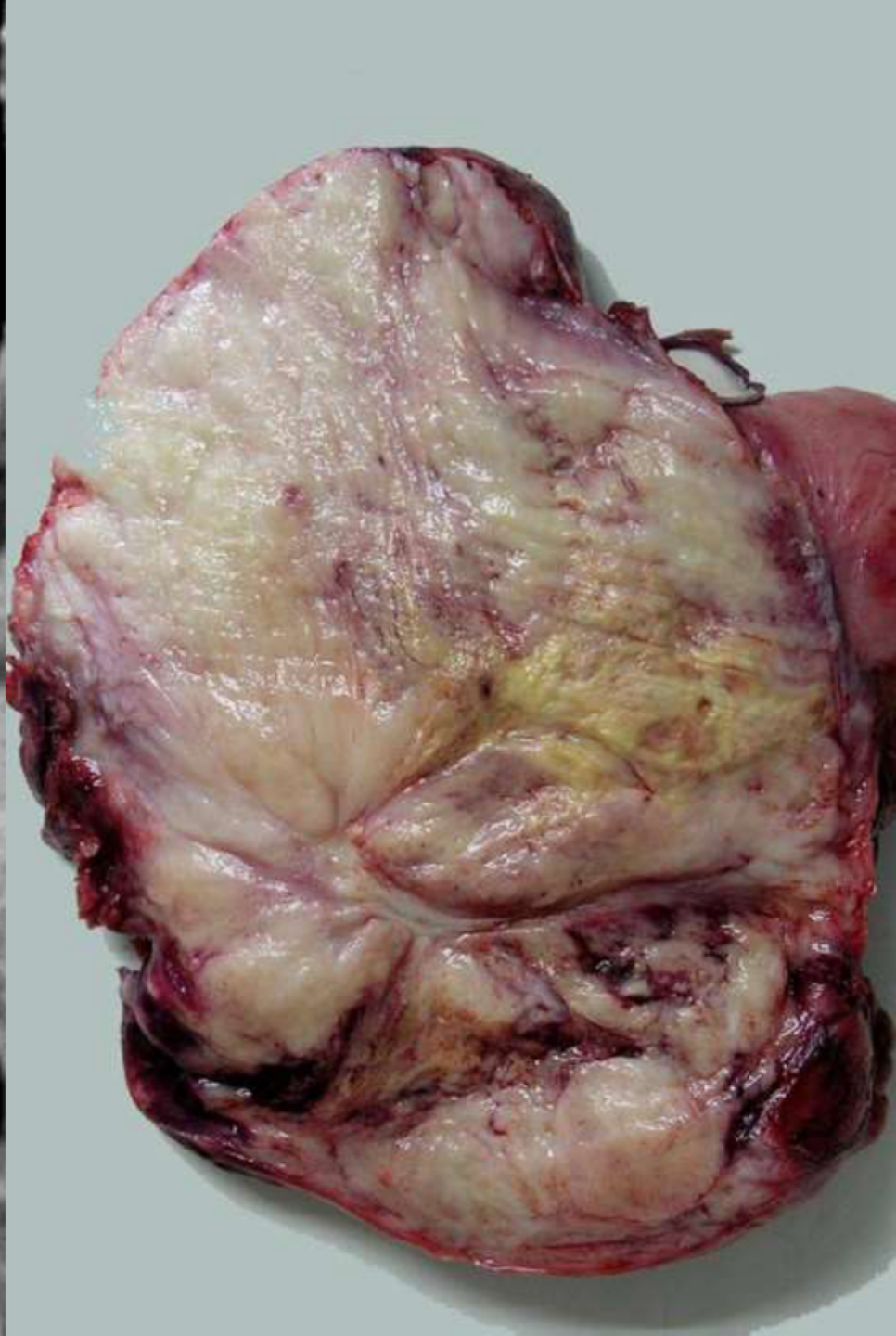


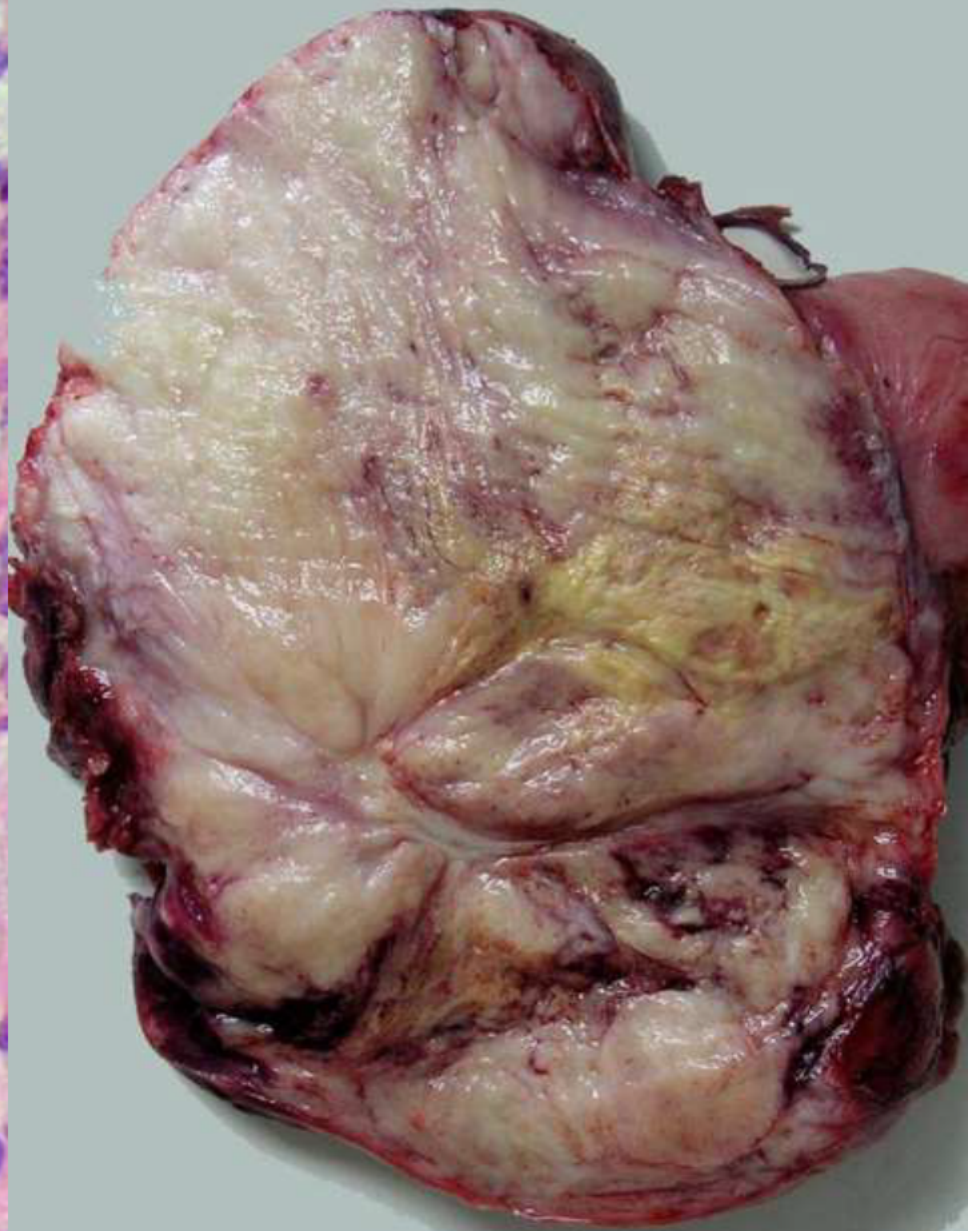
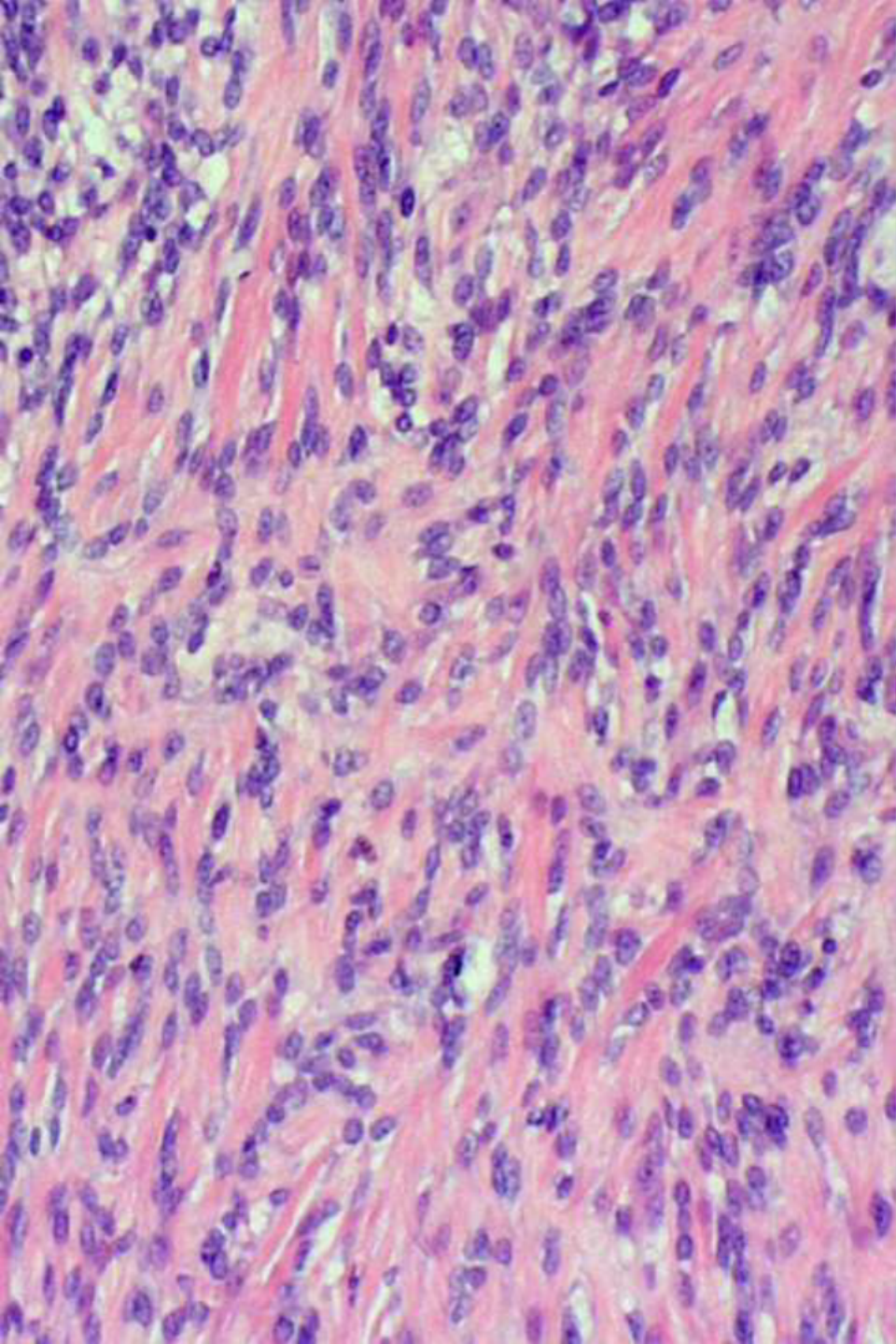
D











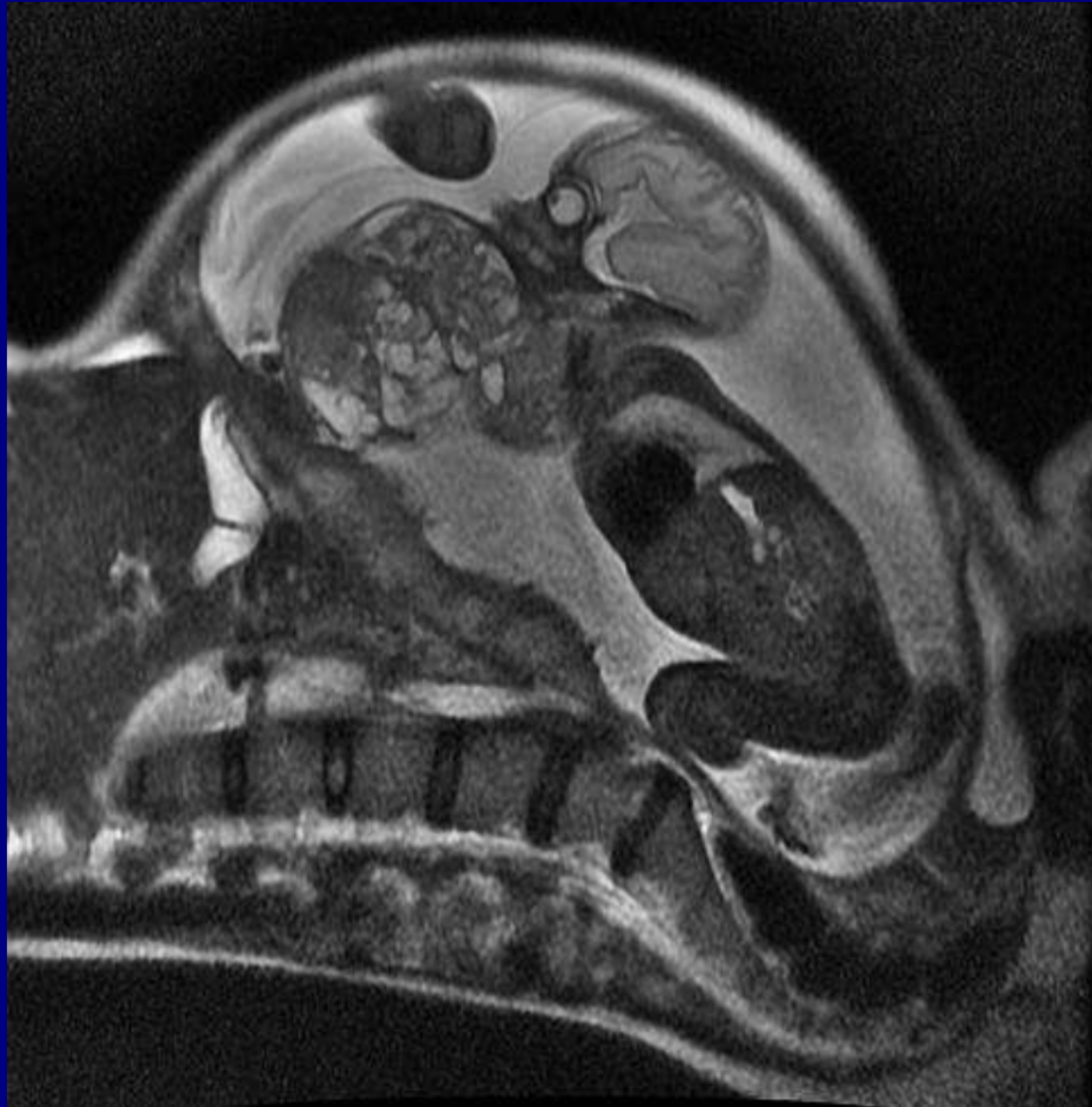
Solitary Fibrous Tumor of the Pleura with Hypertrophic Osteoarthropathy

Maria Vial, MD, MSc

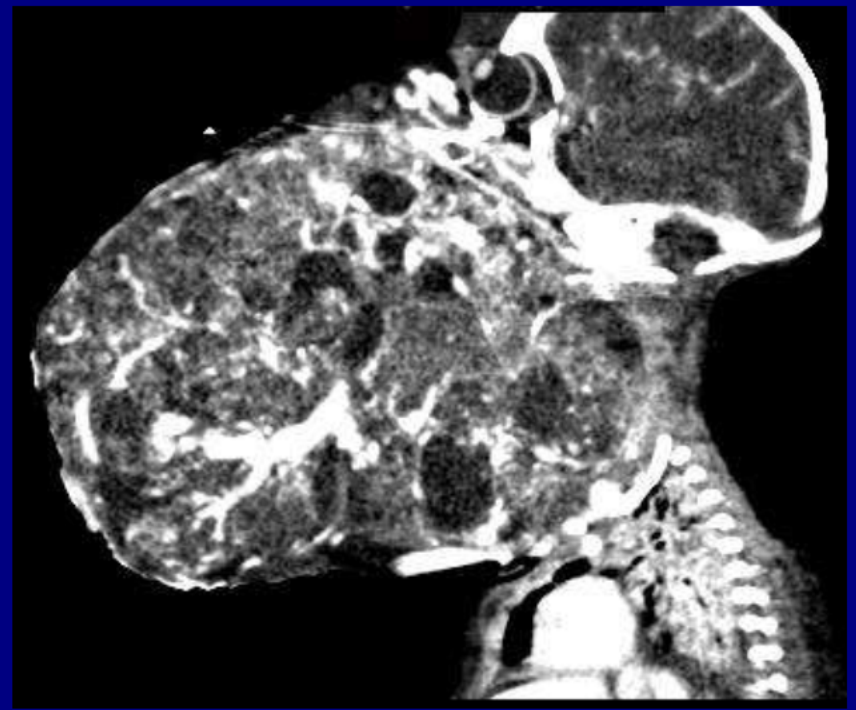
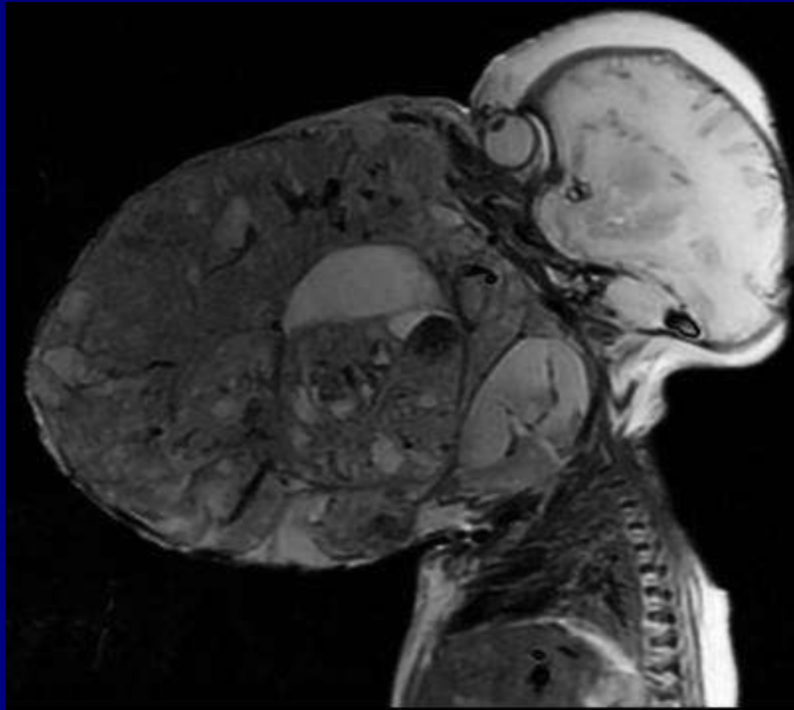
Hospital Clínico Universidad Católica
Santiago, Chile

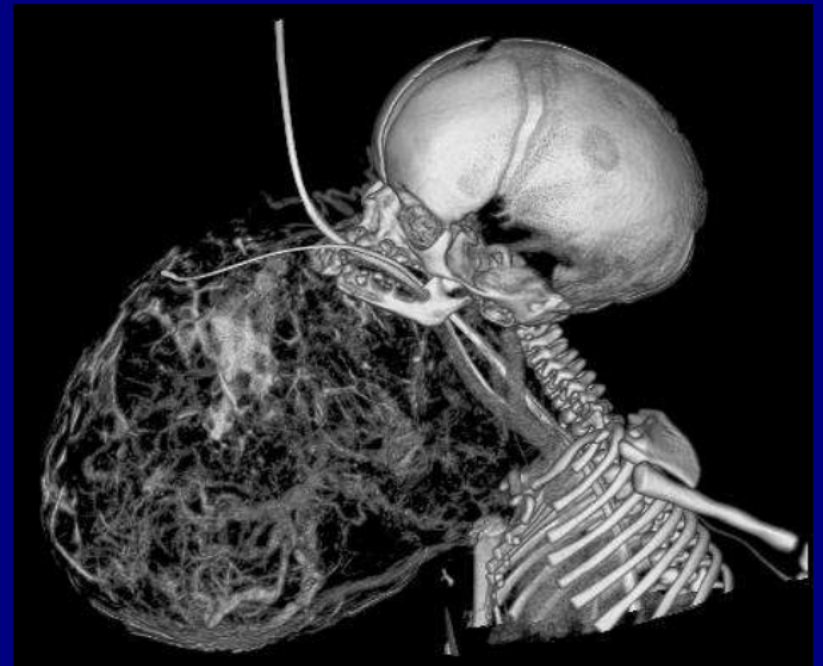
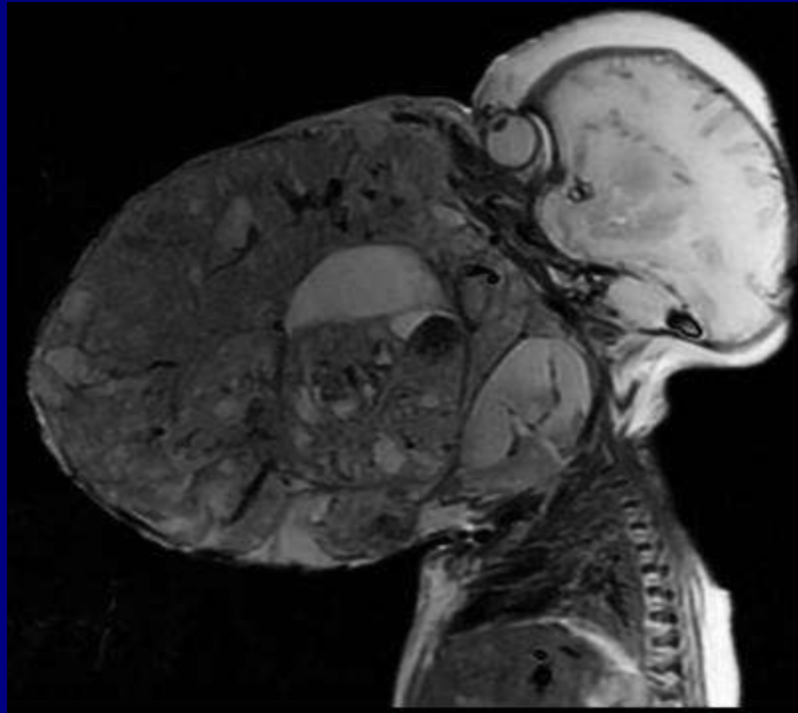
Pediatric Best Case

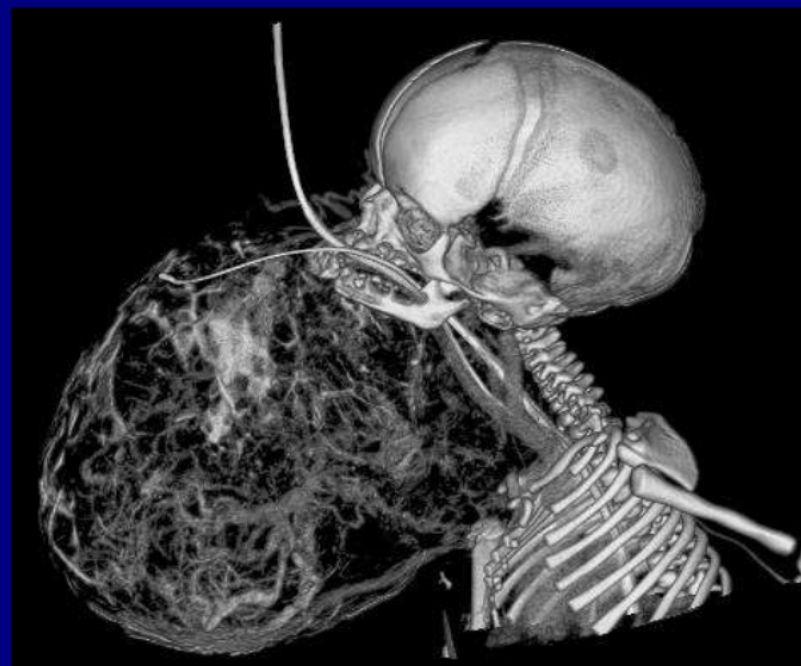
28-year-old with diamniotic monochorionic
twins, one of which has a neck mass on
prenatal ultrasound

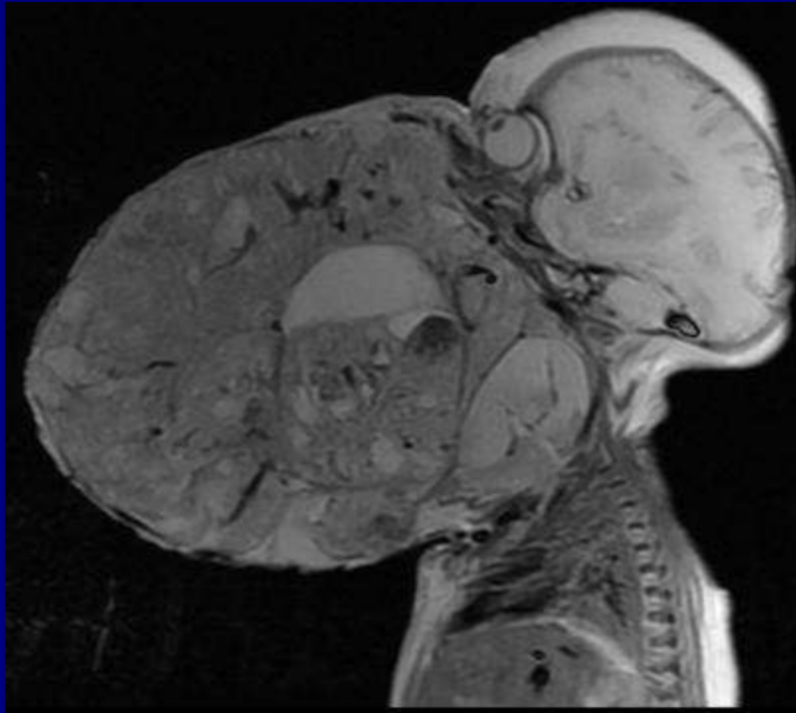


After EXIT procedure









Mixed Germ Cell Tumor –
Mature and Immature Teratoma and Yolk
Sac Tumor

Talha Allam, MD
St. Louis University Health Sciences
Center
St. Louis, Missouri

Breast Best Case

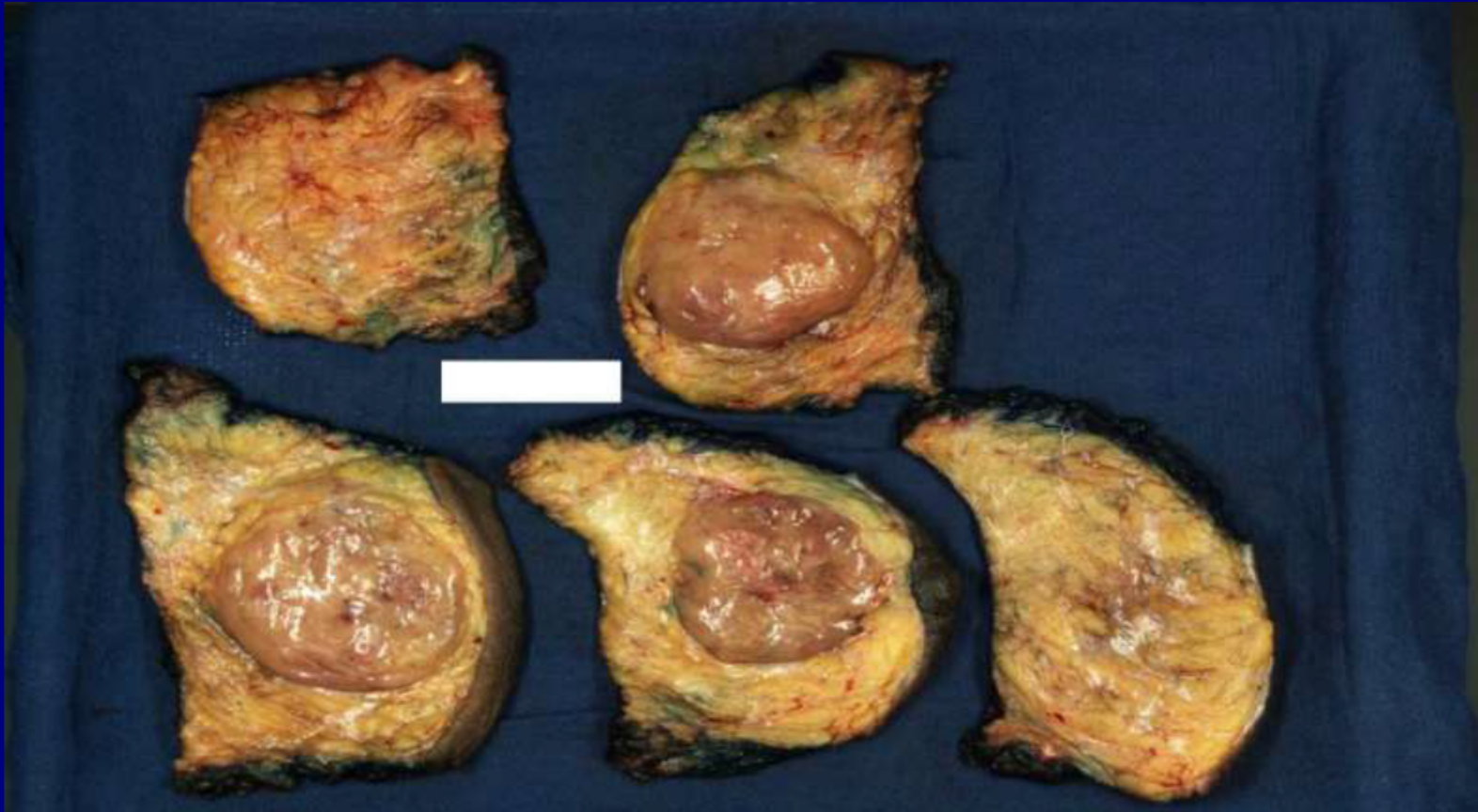
53-year-old woman who presented with a
rapidly enlarging right breast mass

MIP

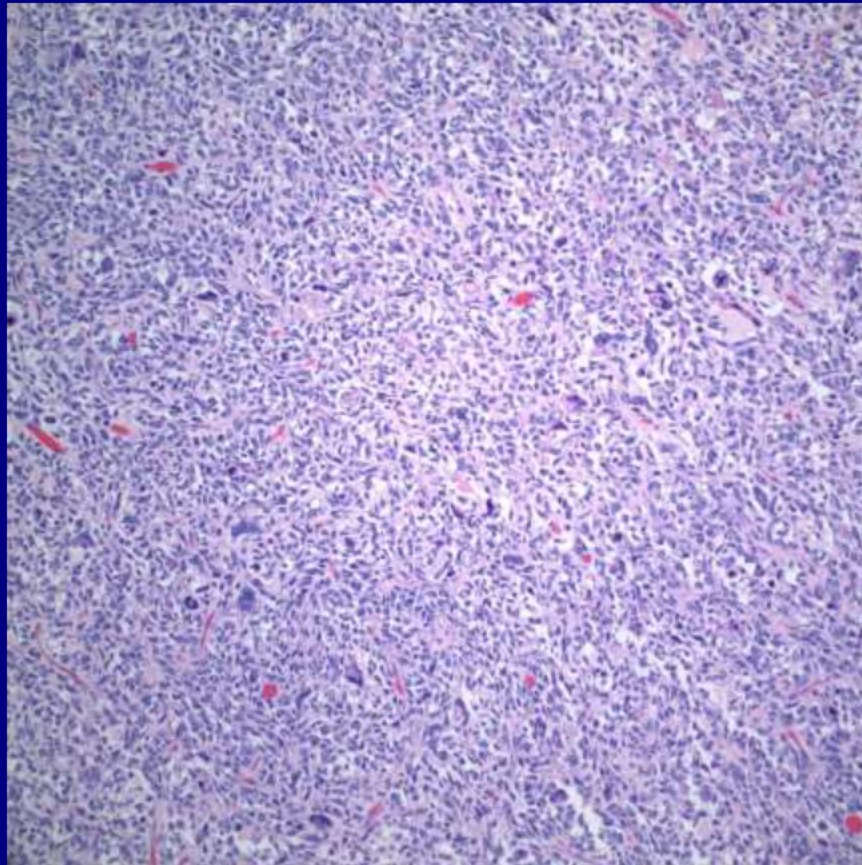




Gross



Micro



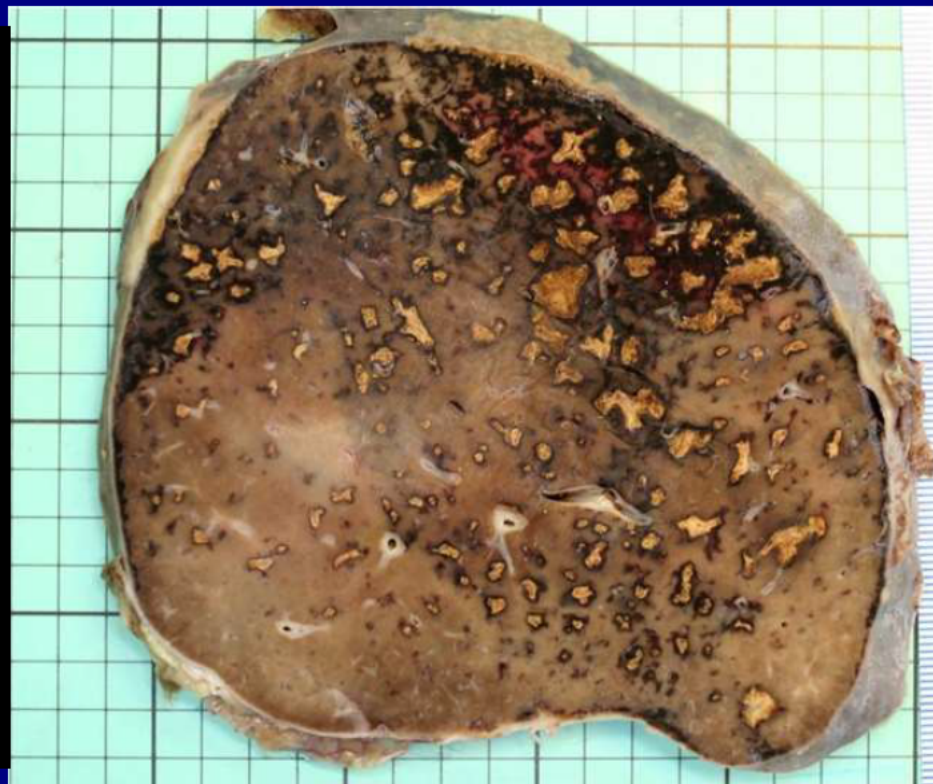
Undifferentiated Pleomorphic Sarcoma (Myxofibrosarcoma)

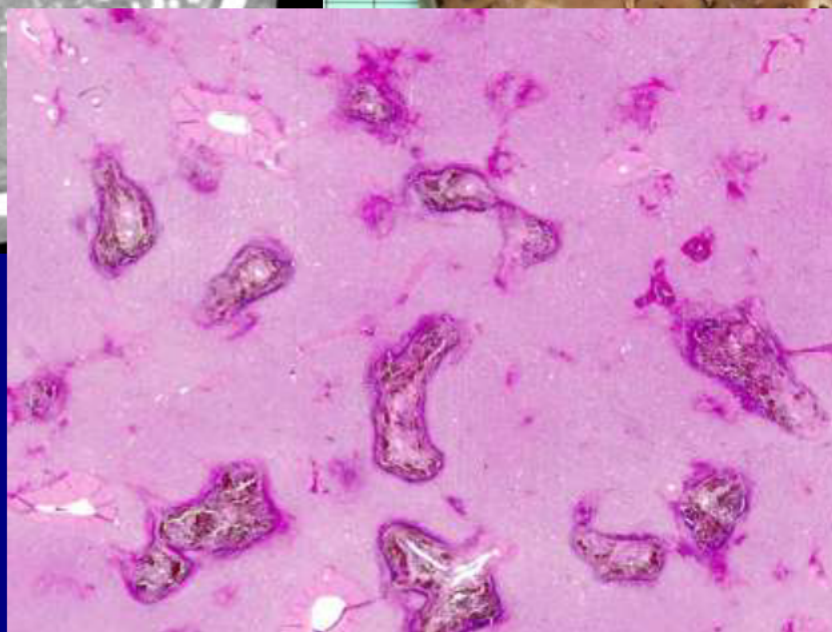
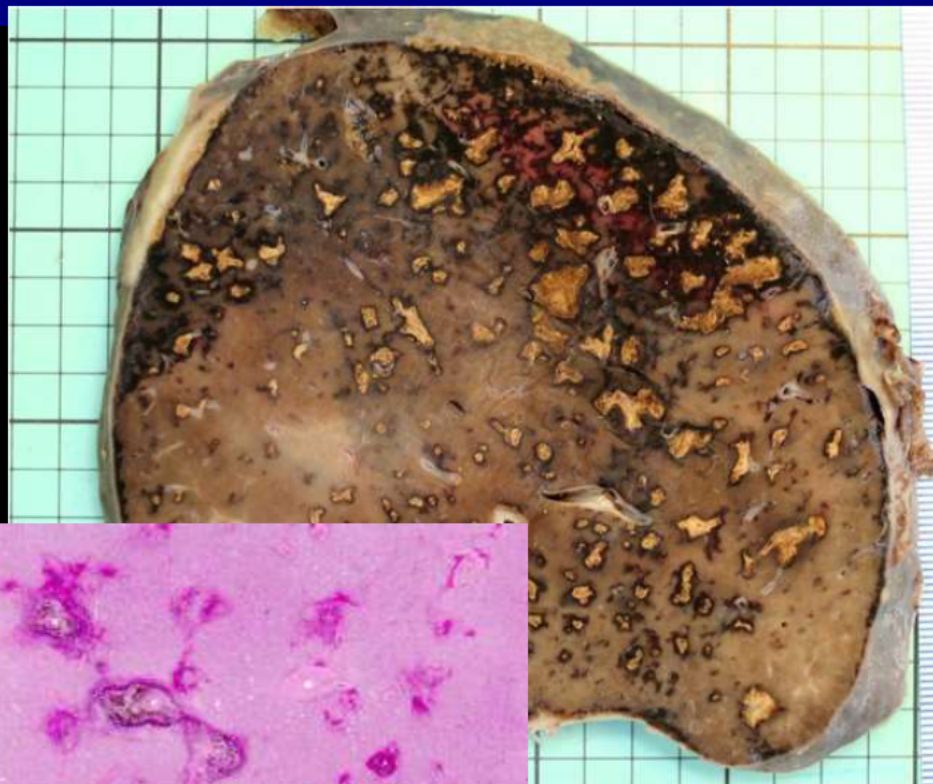
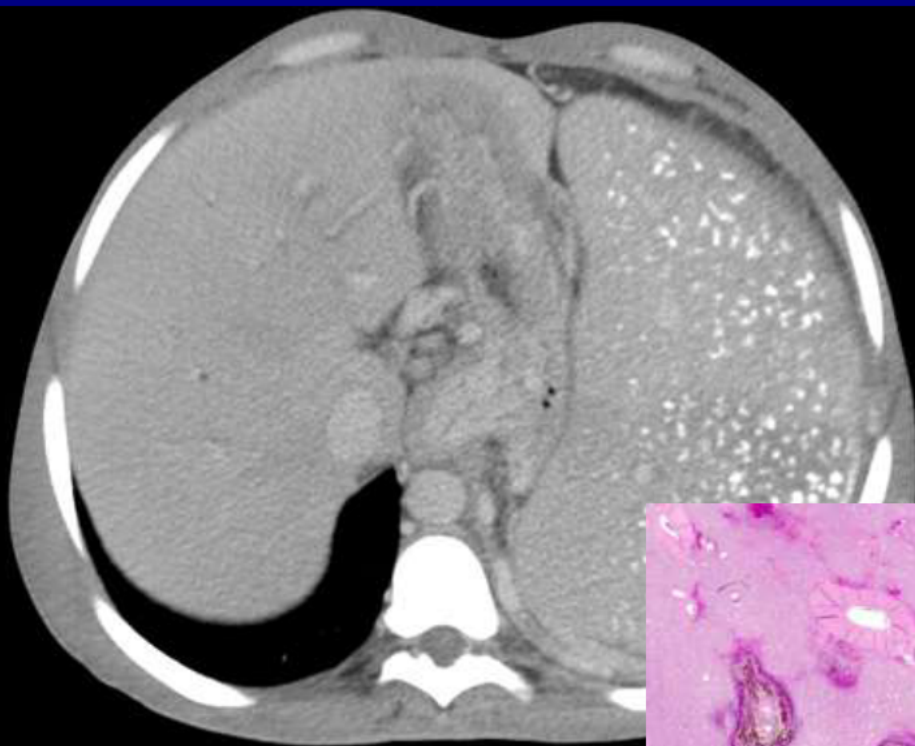
Christopher Garcia, MD
Hartford Hospital
Hartford, Connecticut

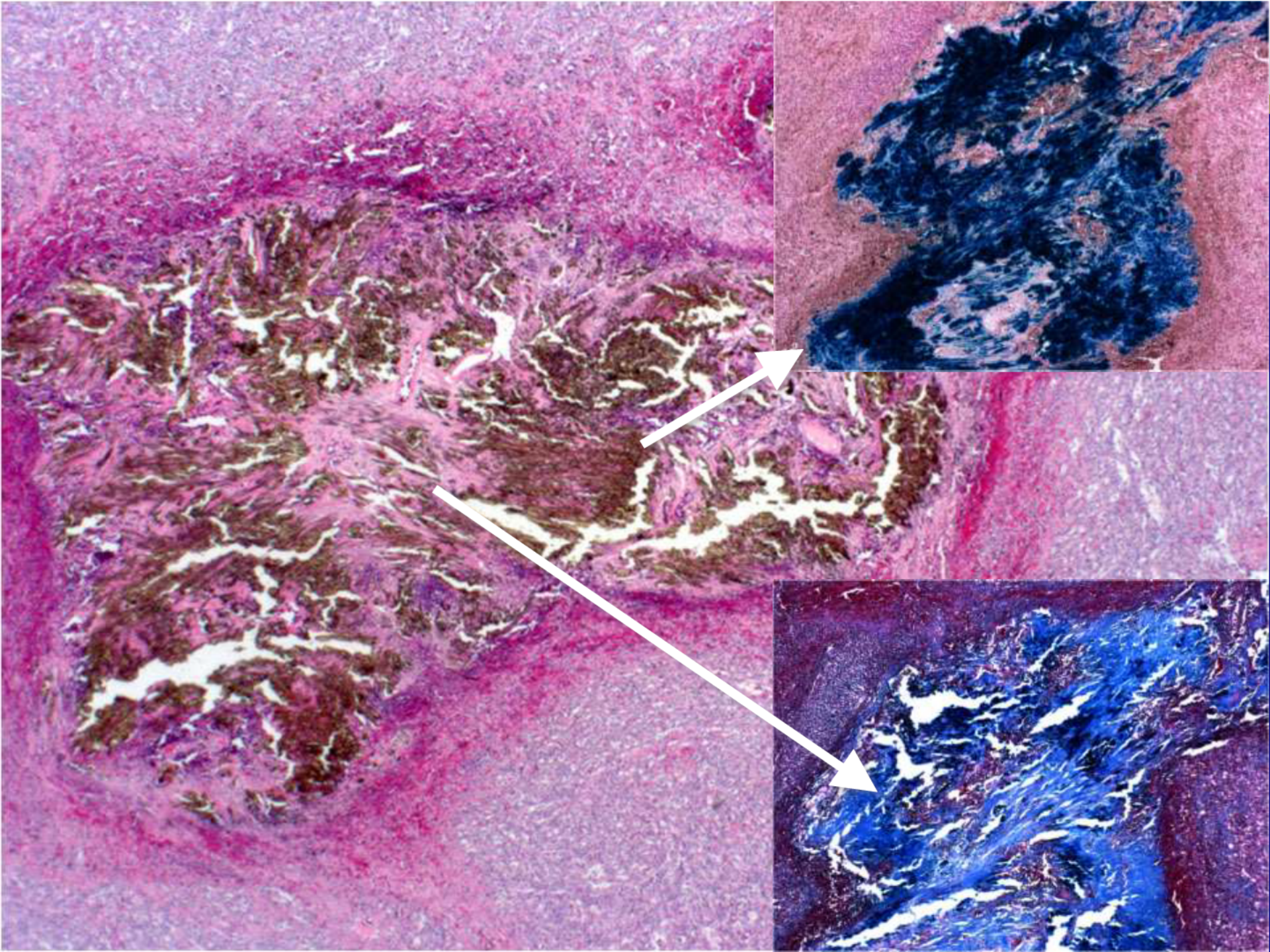
Gastrointestinal Best Case

19-year-old man with worsening abdominal pain and bloating, left pleuritic chest pain, and scrotal swelling









Gamna-Gandy Bodies

Emily Pang, MD
University of Toronto
Toronto, Canada

Many thanks to all of you for
submitting such great cases!
Have a safe trip home –

From the staff of the
American Institute for Radiologic Pathology