

# Best Cases of the AIRP

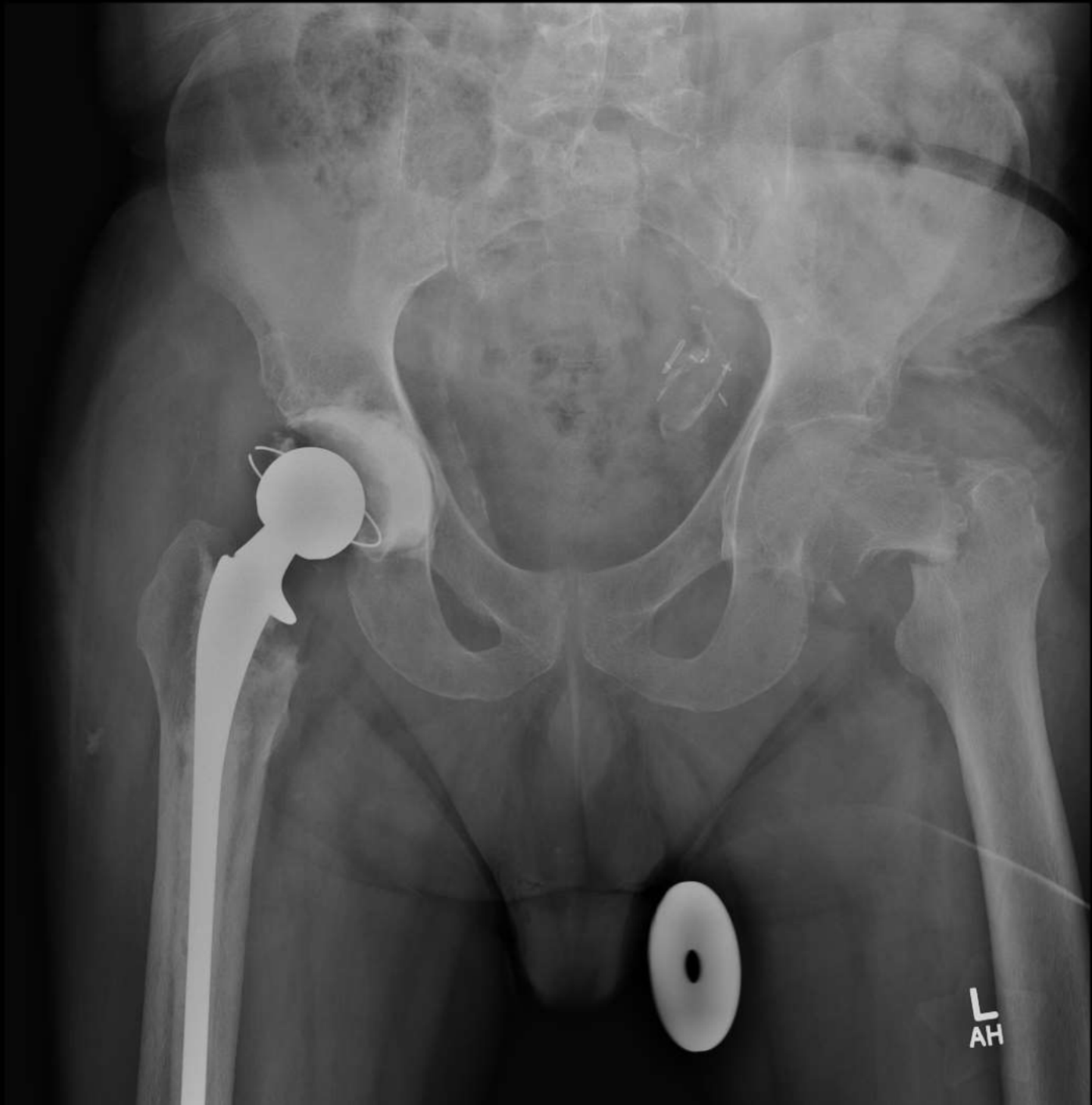
**April 21-May 16, 2014**

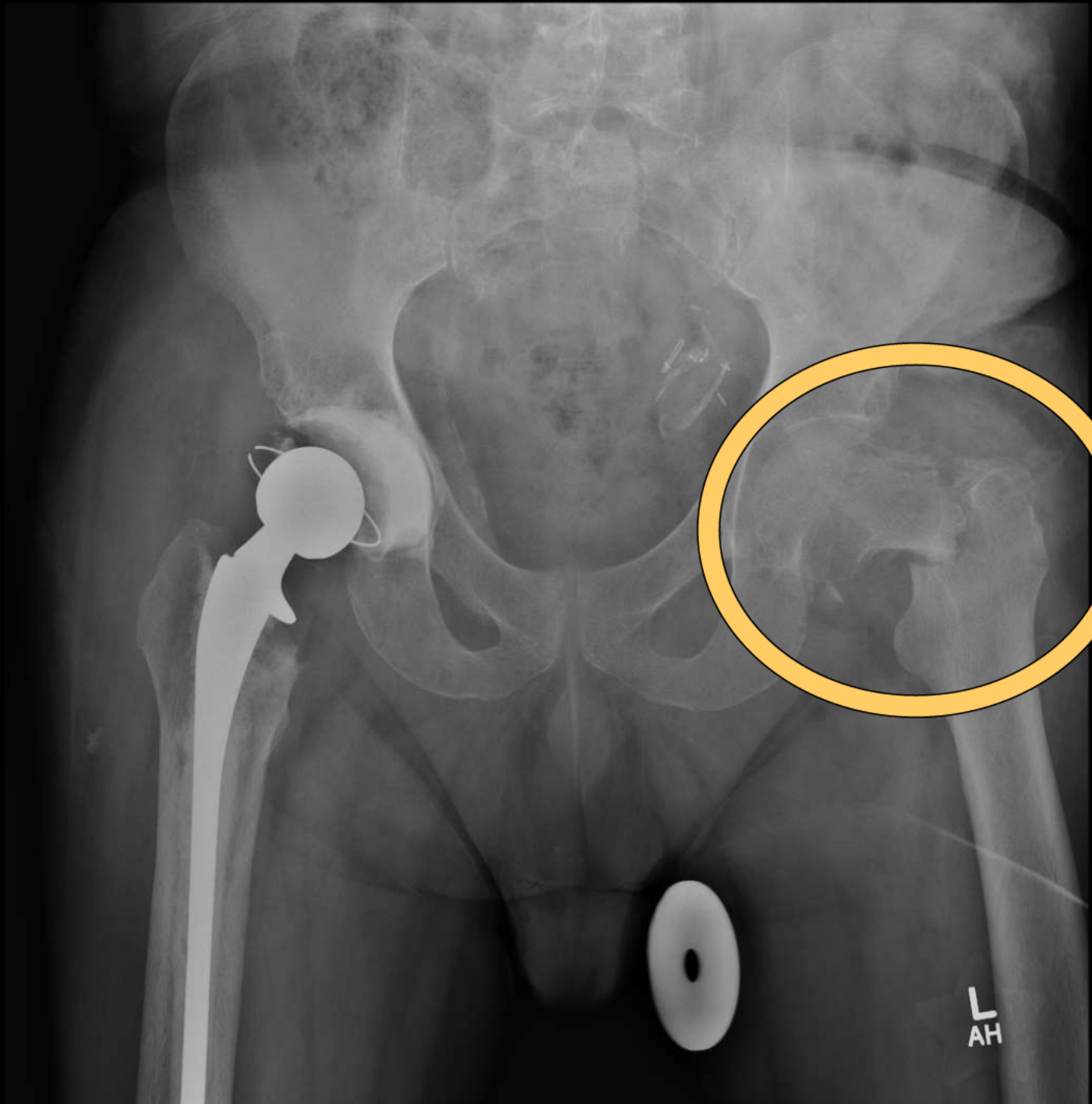
# Musculoskeletal Best Case

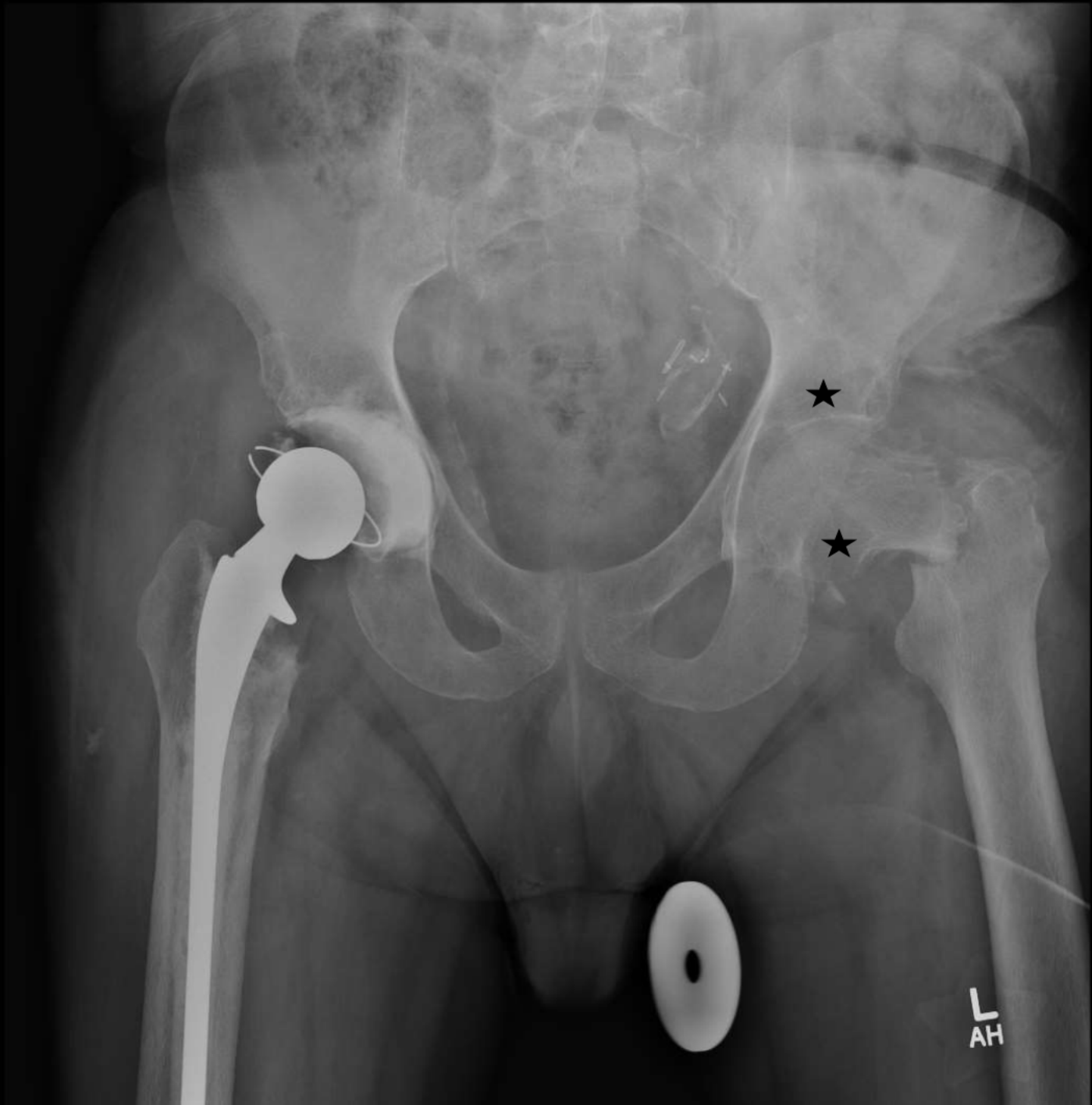


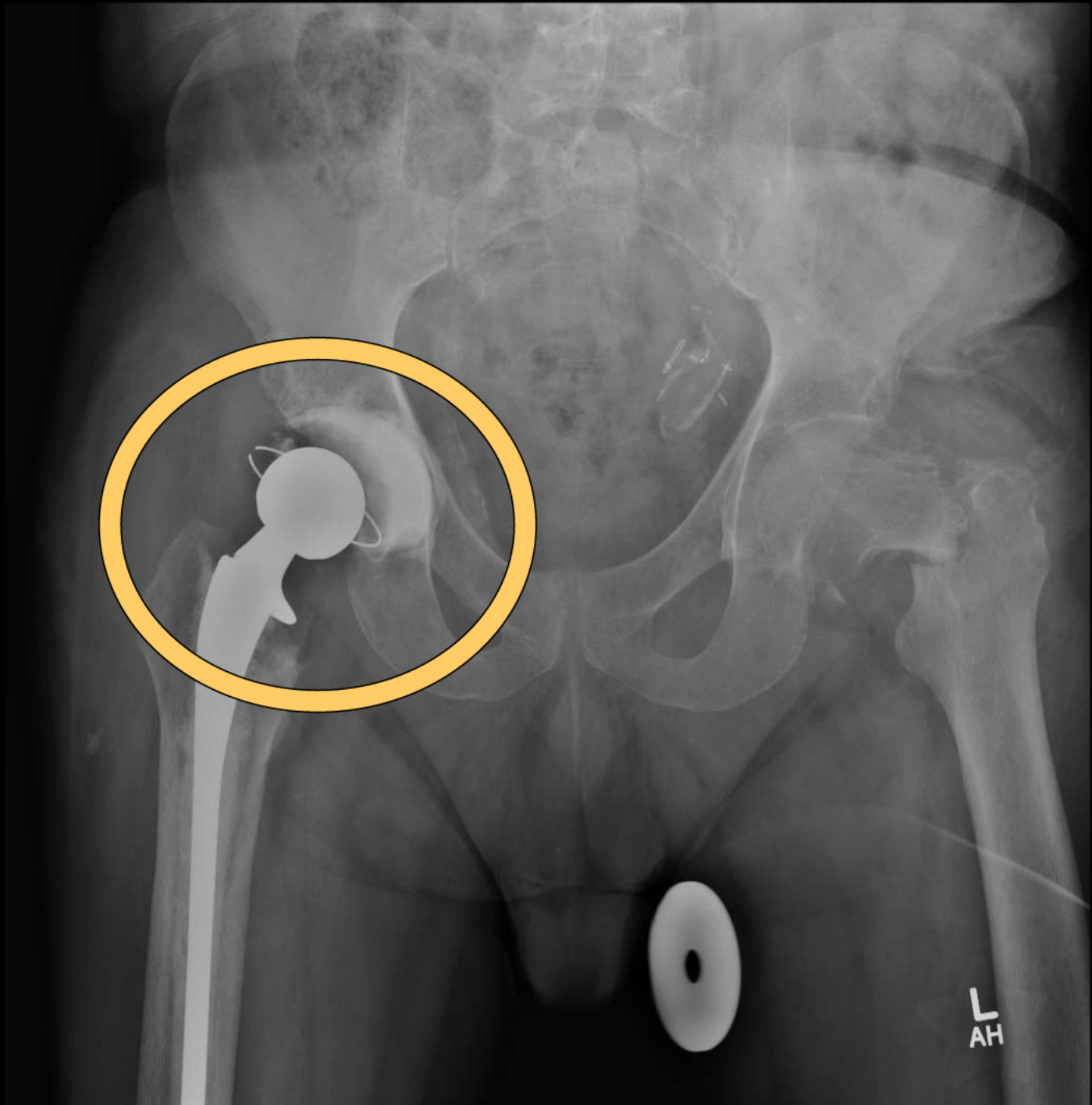
# History

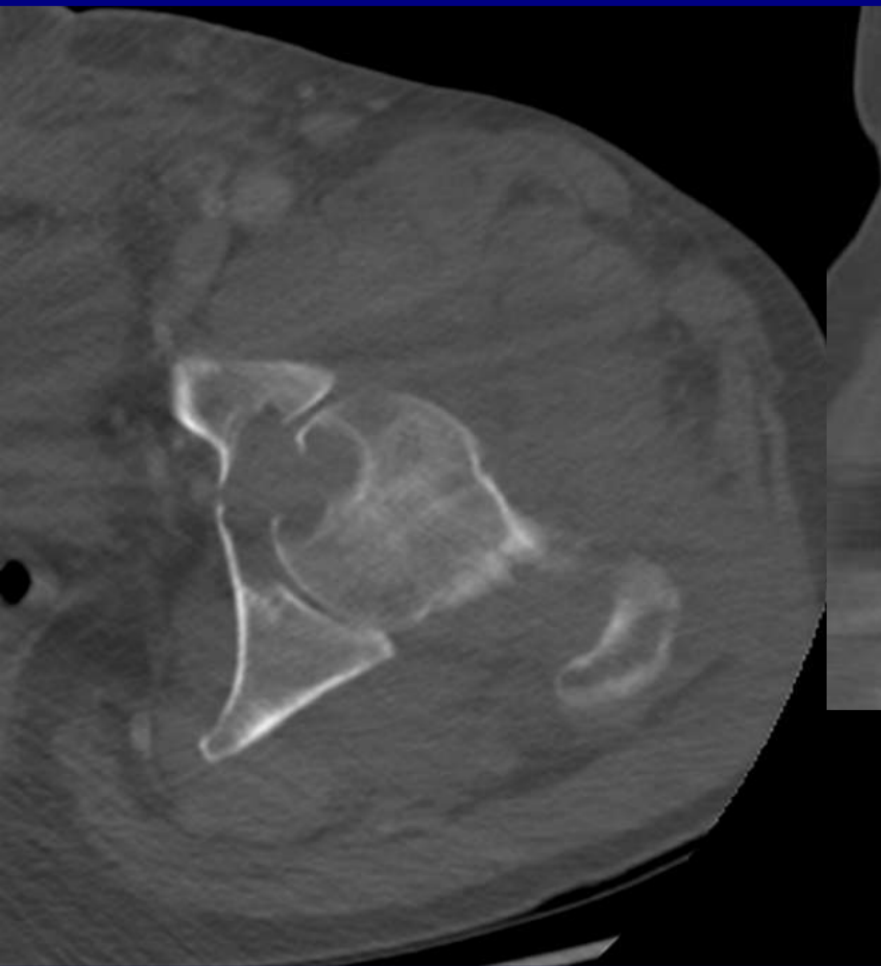
**57 year old male on chronic dialysis**

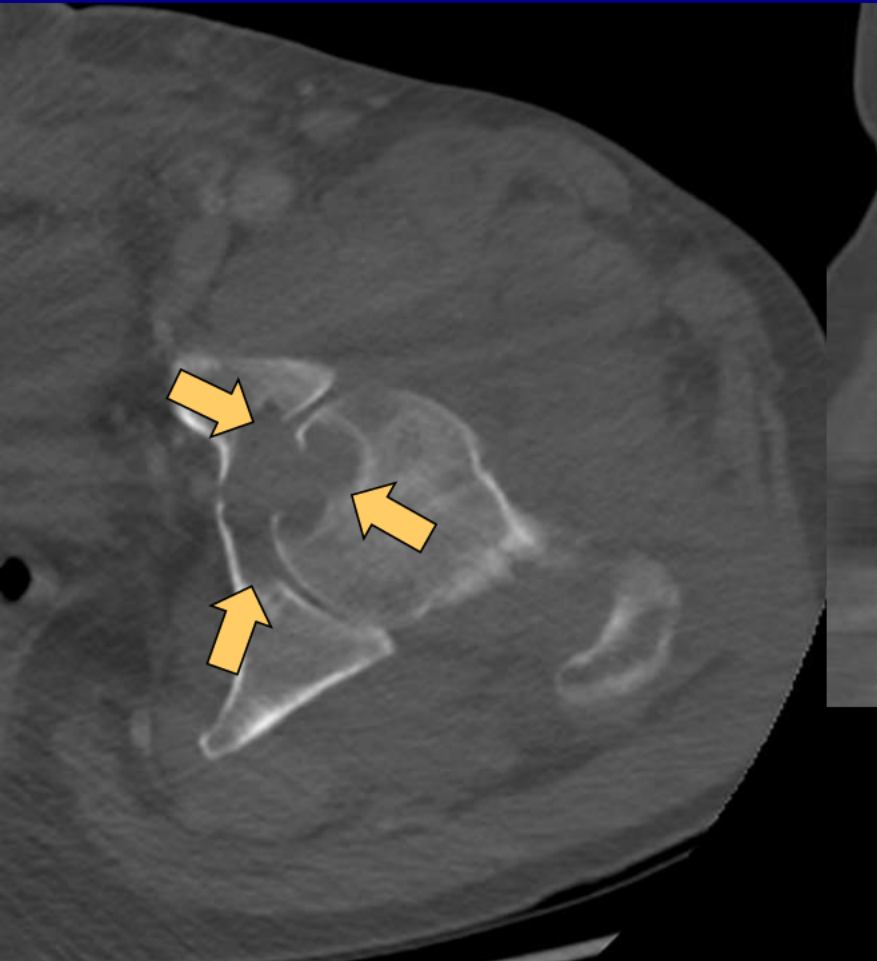




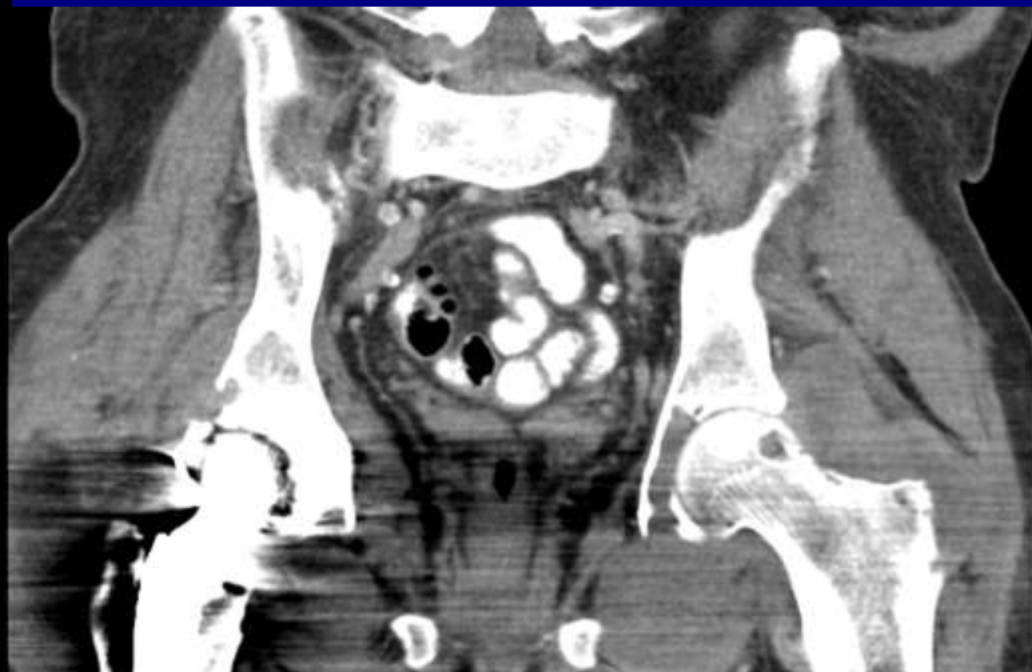




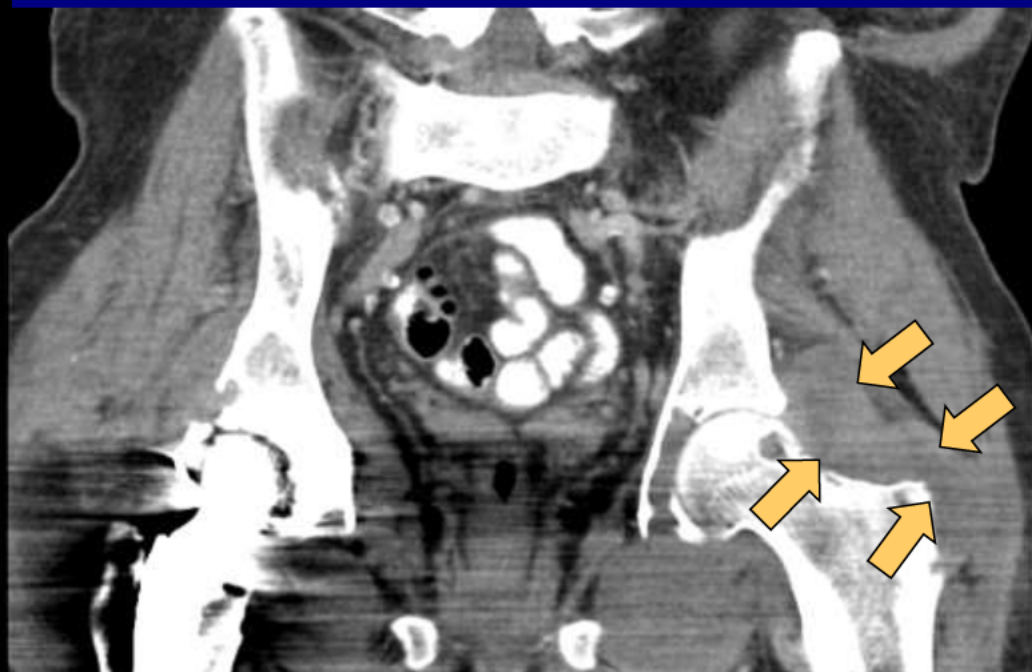


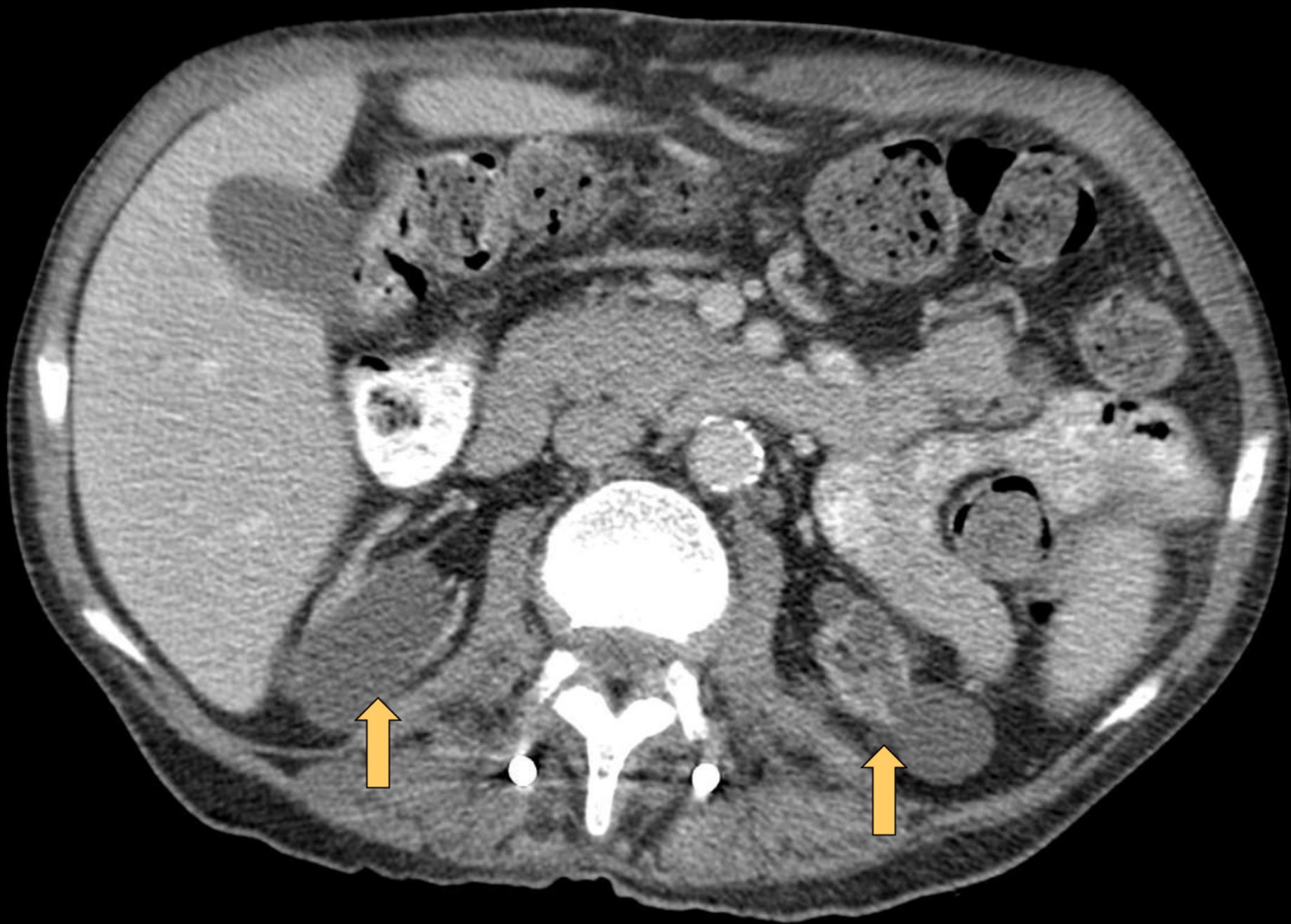


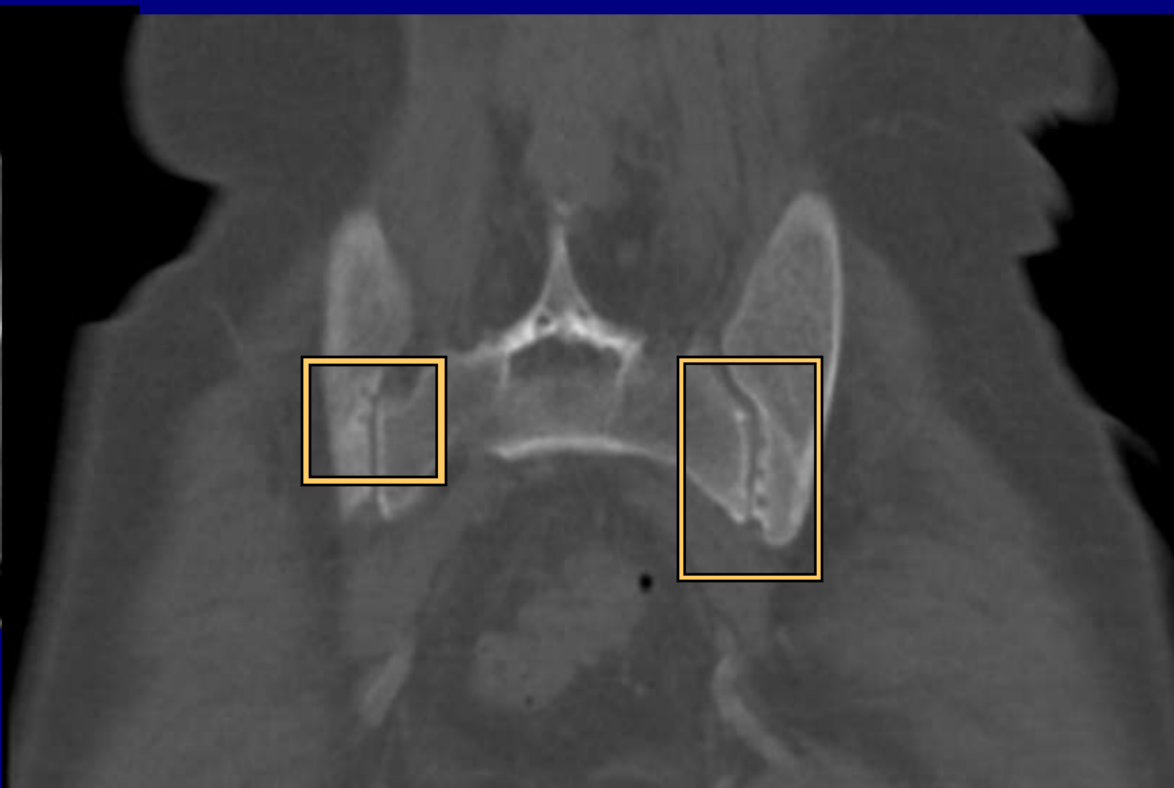
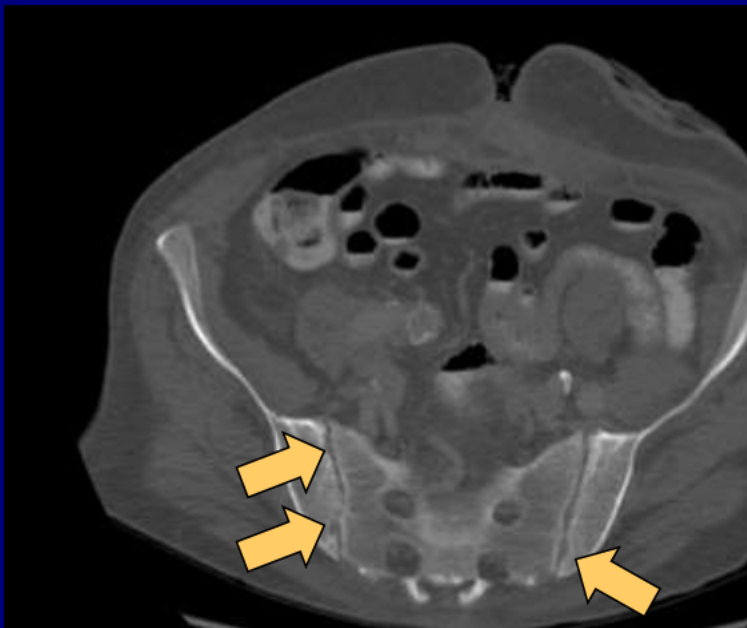




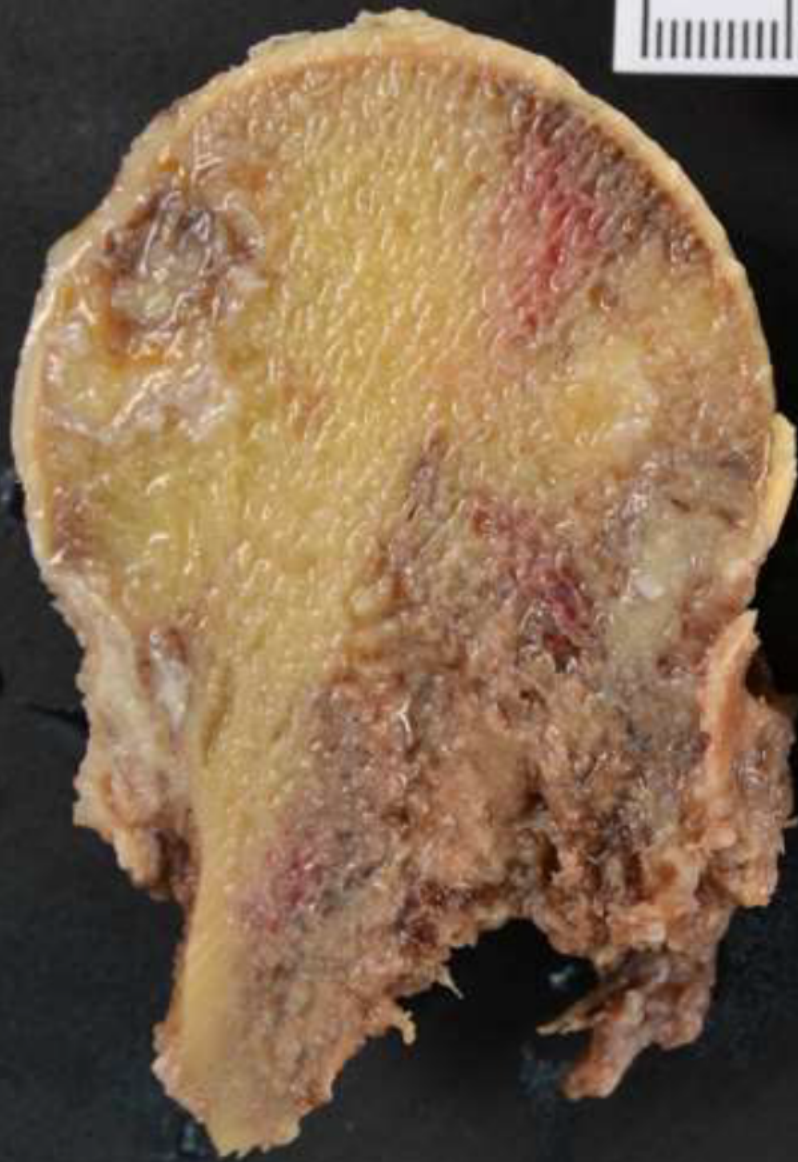






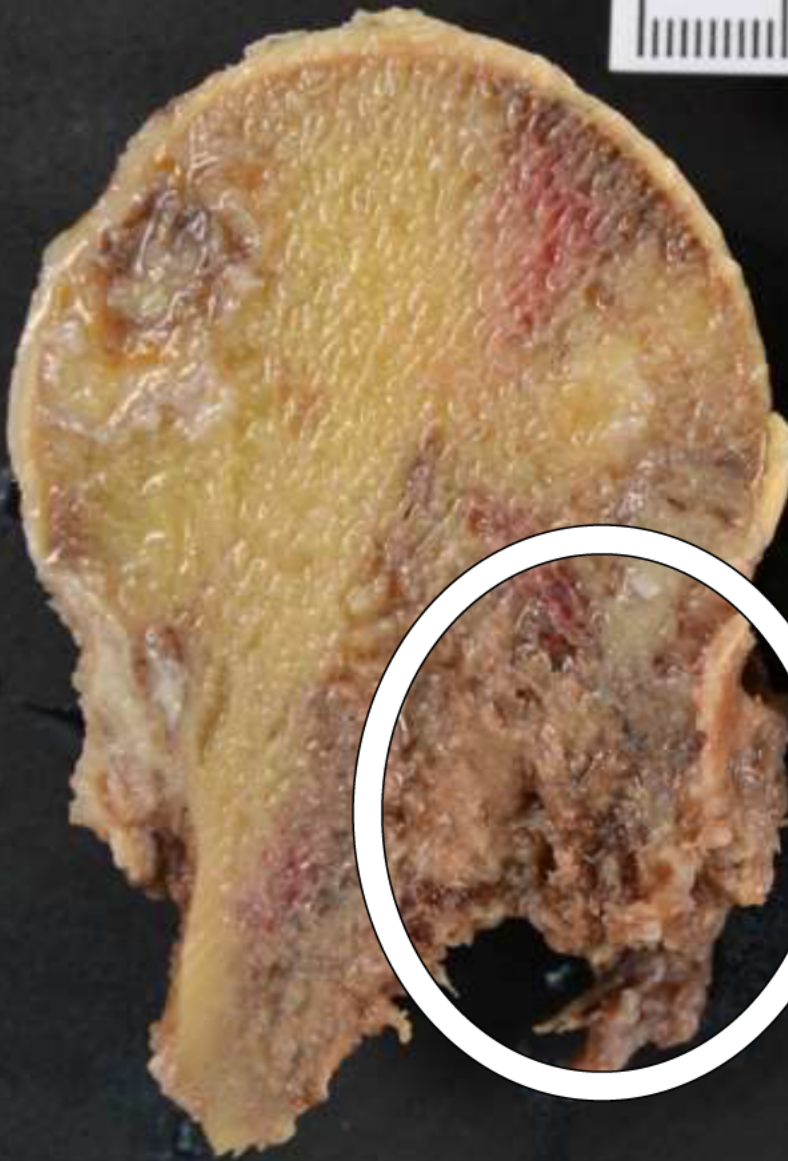


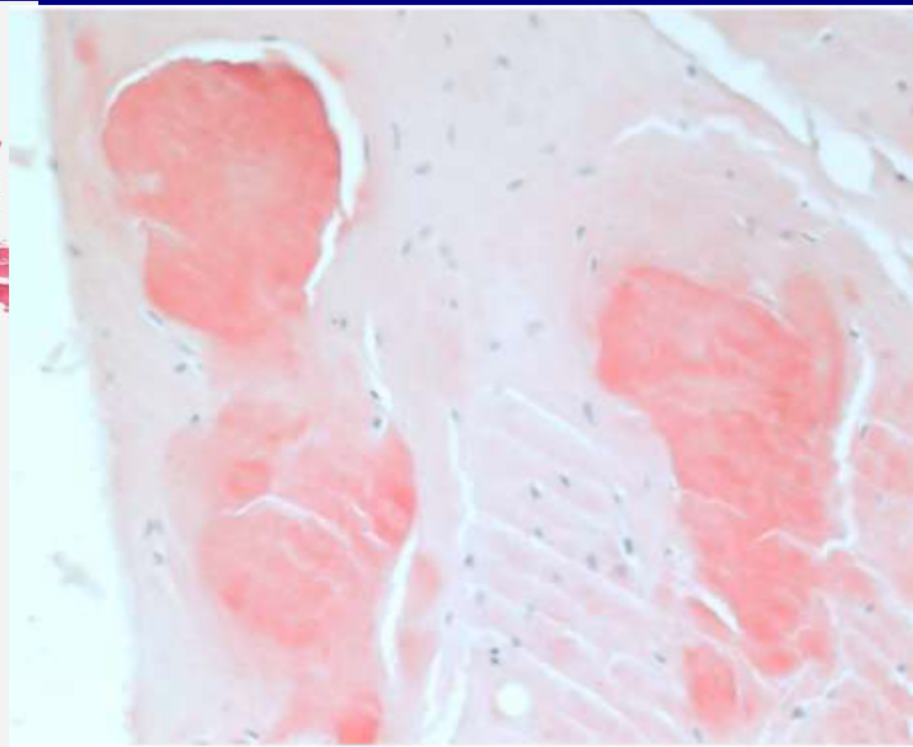
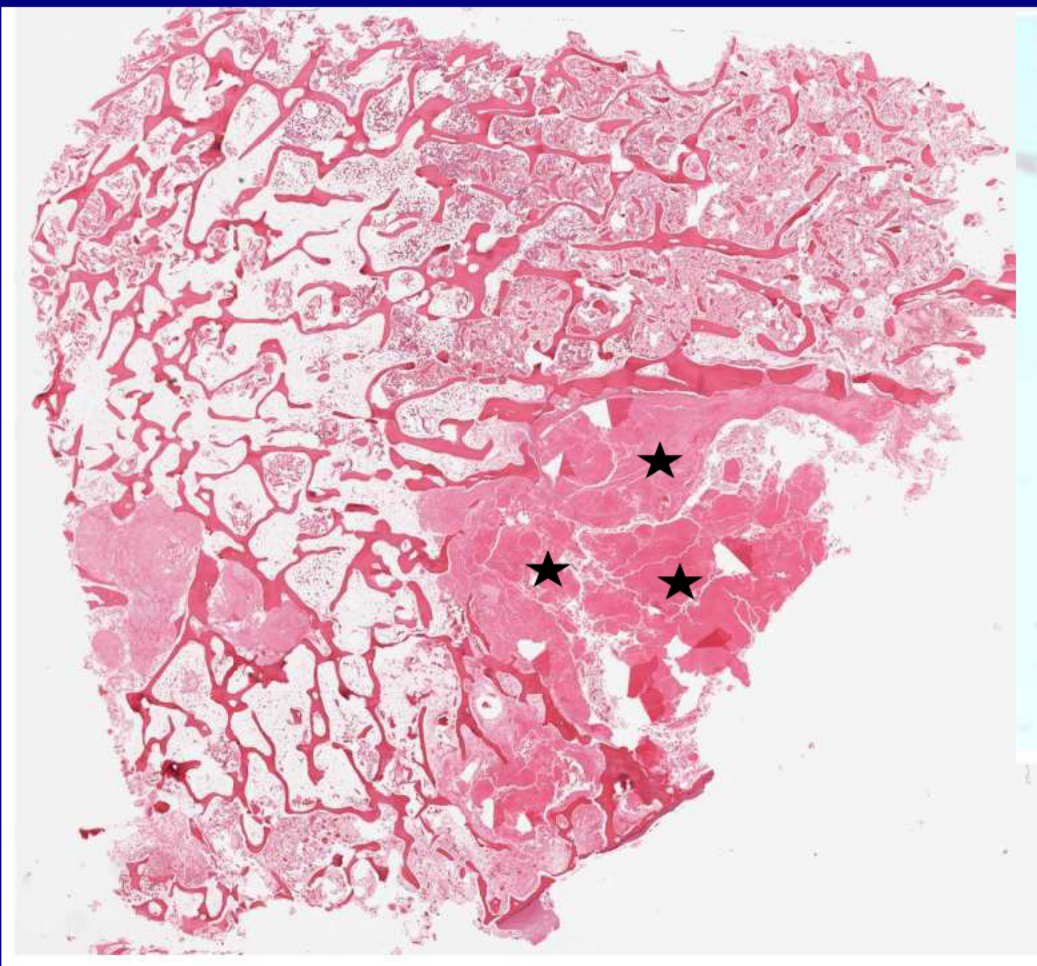




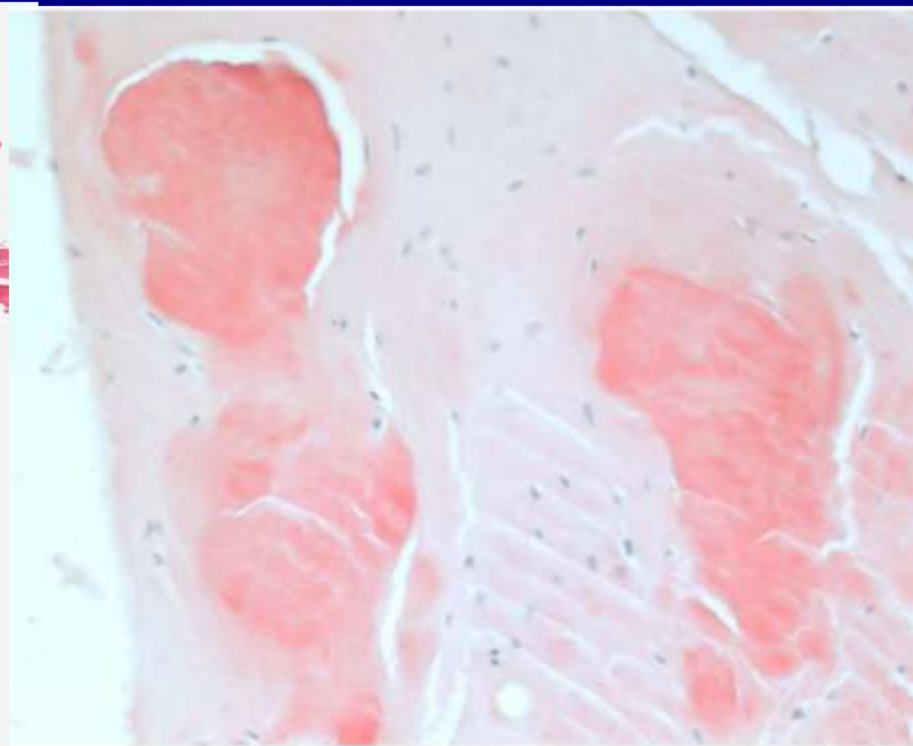
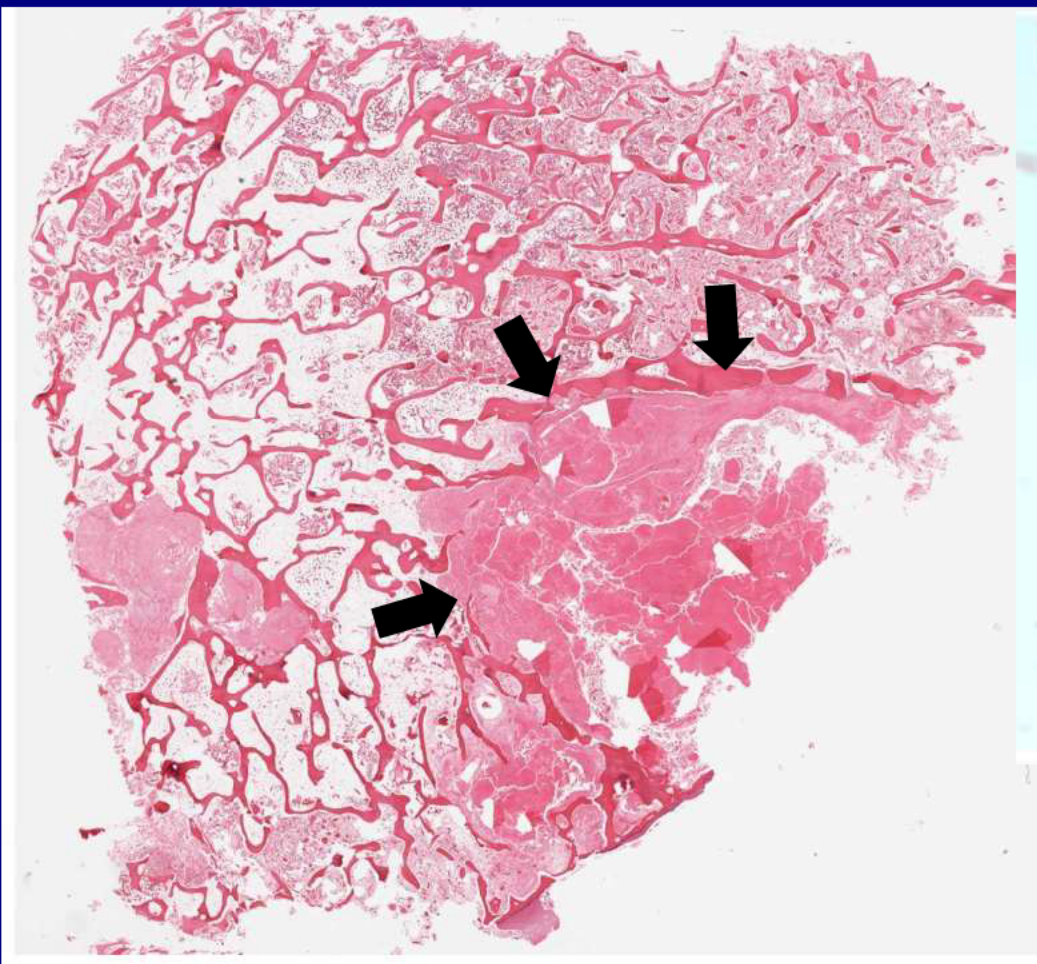




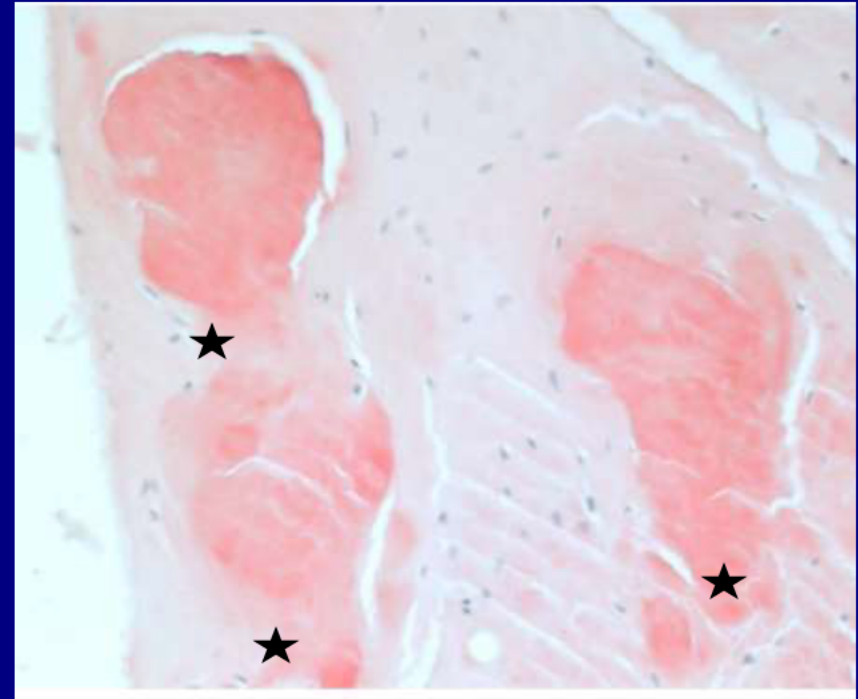
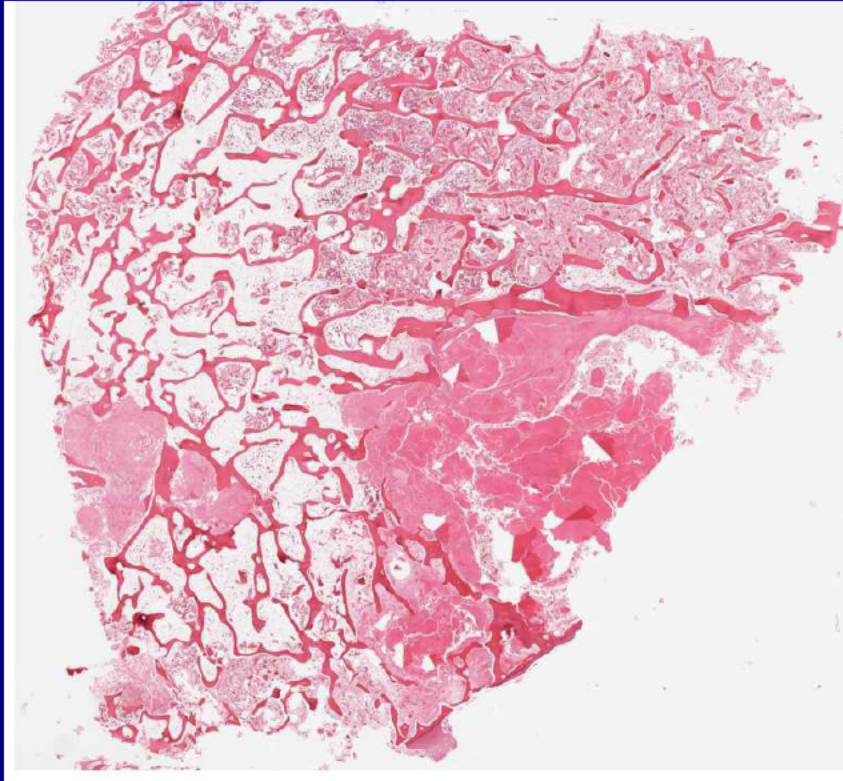












# Amyloid Arthropathy associated with chronic renal failure and dialysis

**Dr. Brandon Entwistle**

**University Hospital London Health Sciences Centre  
London, Ontario, Canada**

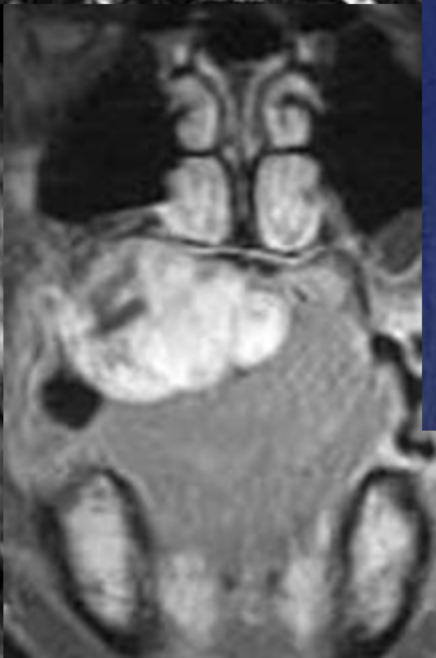
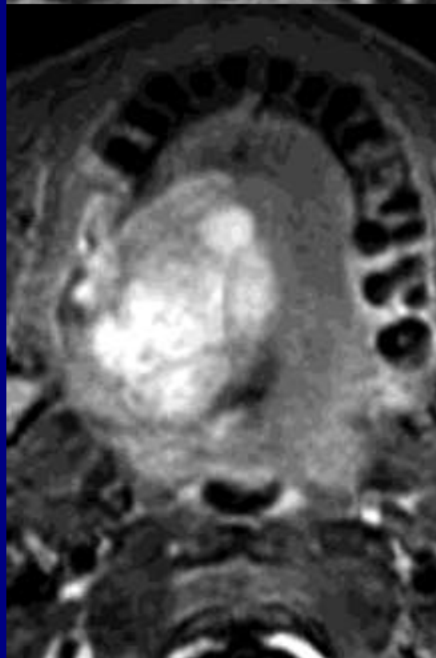
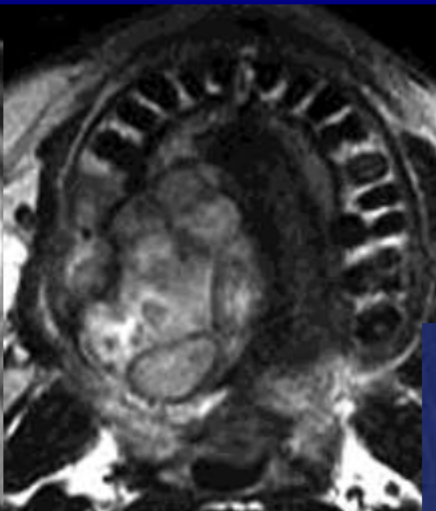
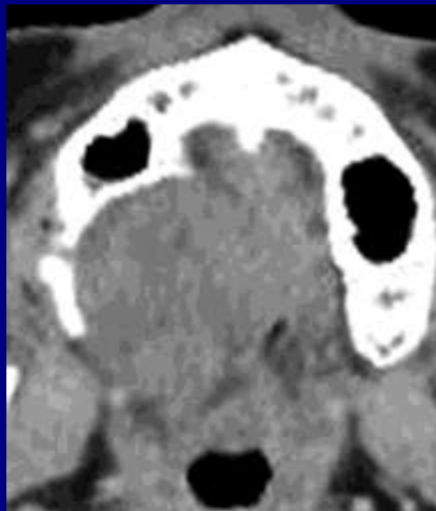
# Neuroradiology Best Case

# History

**43-year-old woman presented with right-sided palatal mass. She had a growth removed from this region as a teenager. Recurred 8 years ago and now slowly increasing in size**

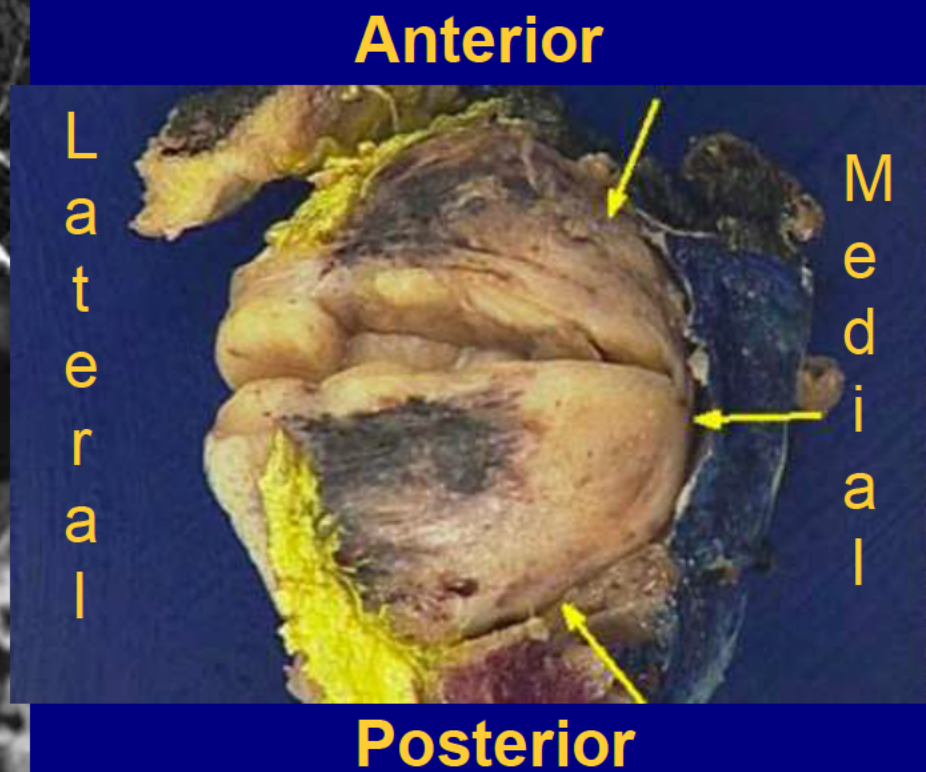
**Axial CT**

**Axial T2 FS**



**Post Axial T1 FS**

**Post Coronal T1 FS**



# Carcinoma ex Pleomorphic Adenoma (Malignant Mixed Tumor)

**Akifumi Fujita**  
**Boston University**  
**Boston, Massachusetts**

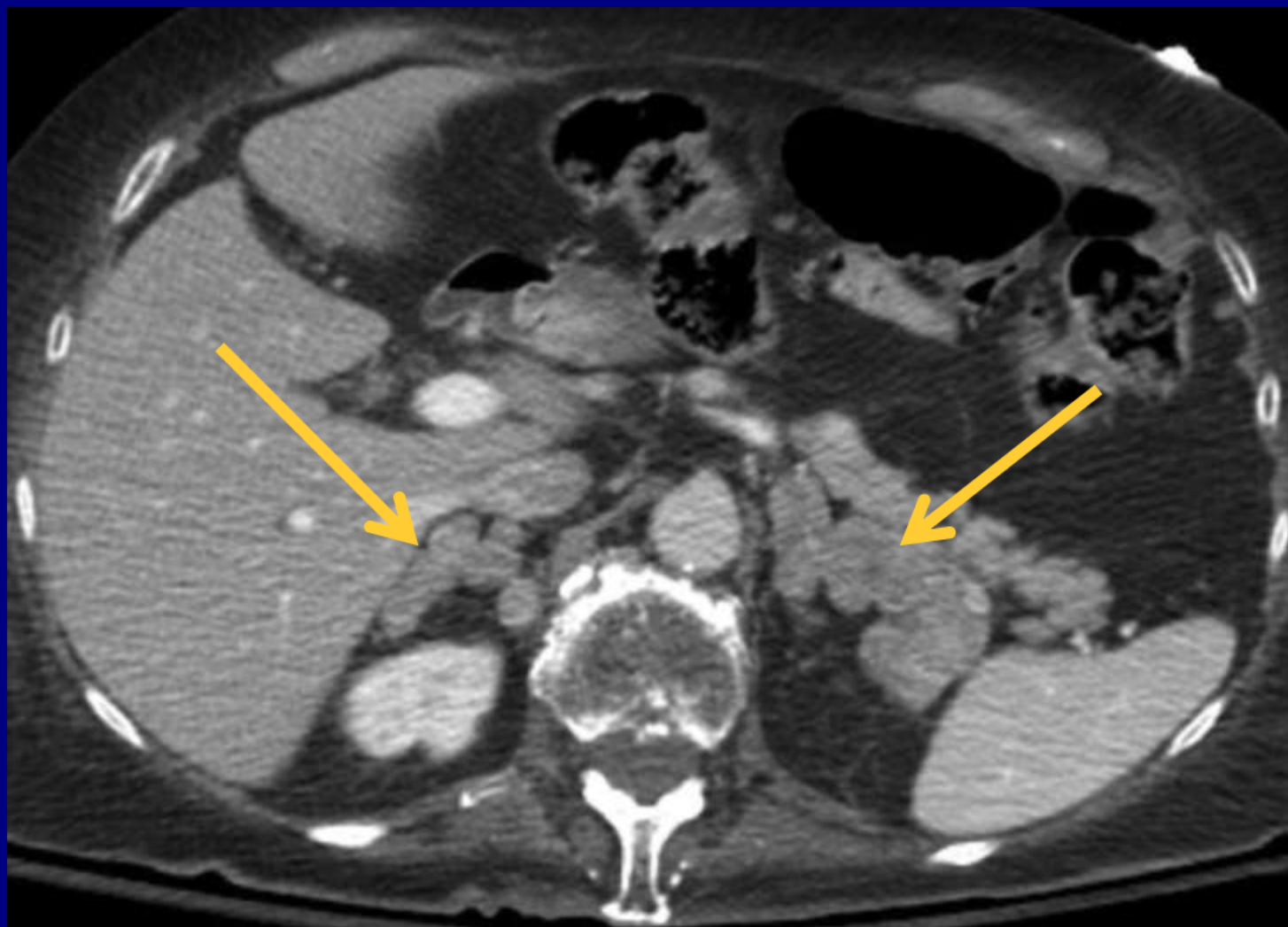
# Genitourinary Best Case

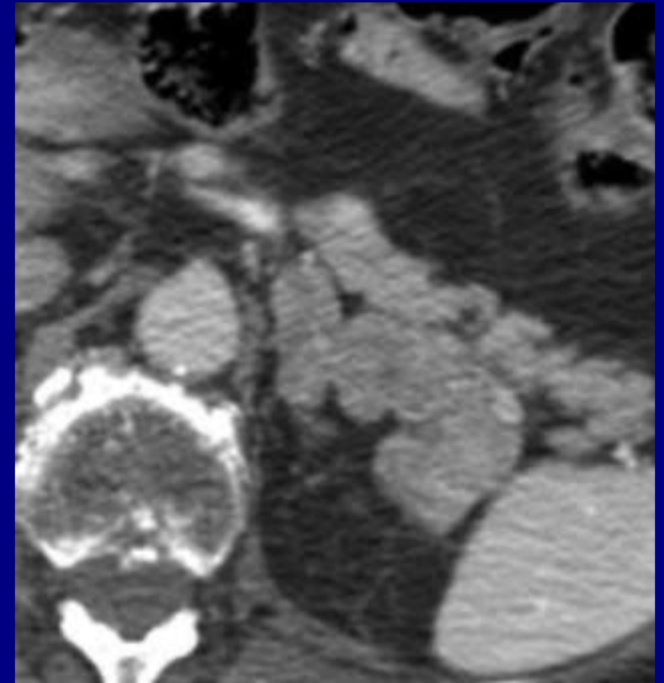
# History

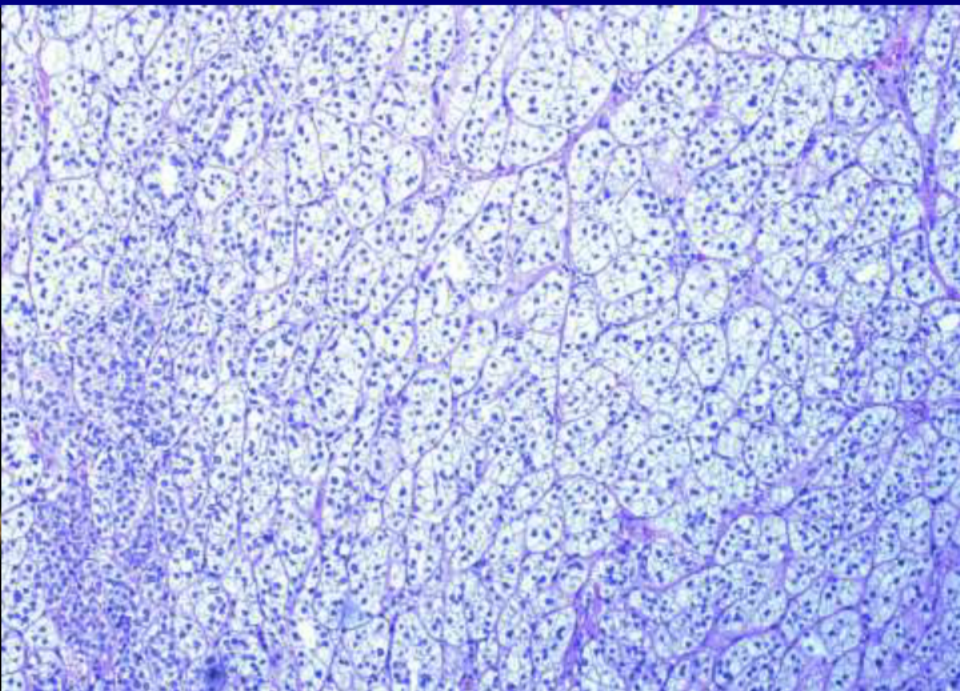
**70 year old adult female with history of morbid obesity, headaches, fatigue and myopathy**









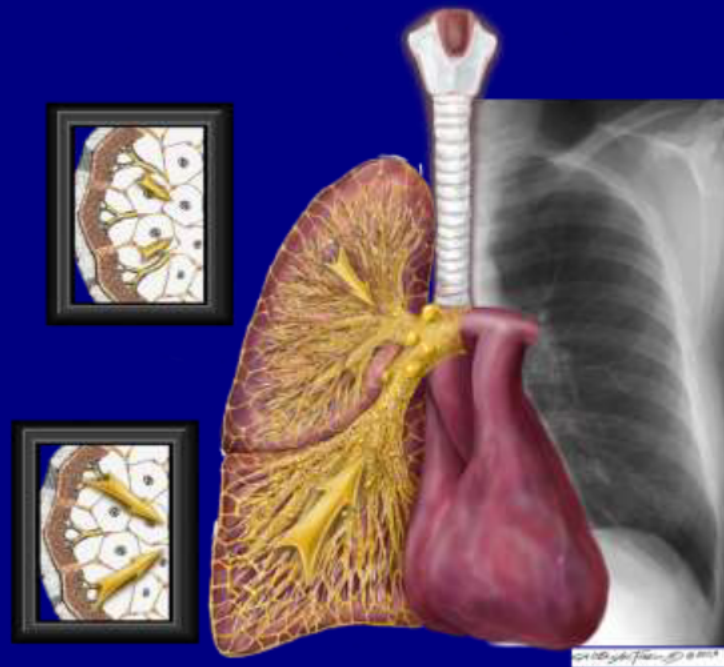




# ACTH-Independent Macronodular Adrenocortical Hyperplasia

**Dr. Huy Nguyen**  
**University of Pittsburgh Medical Center**  
**Pennsylvania, USA**

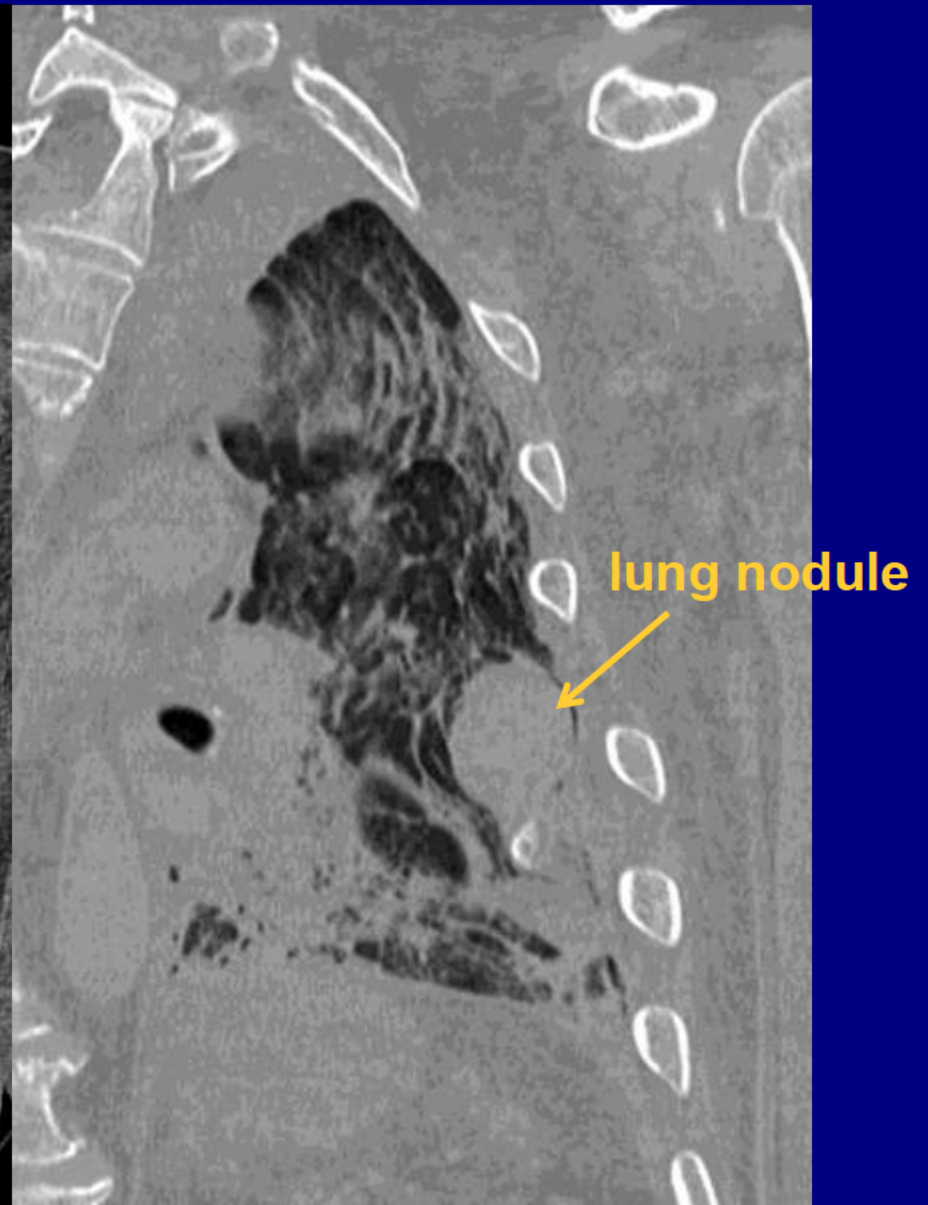
# Pulmonary and Mediastinal Best Case



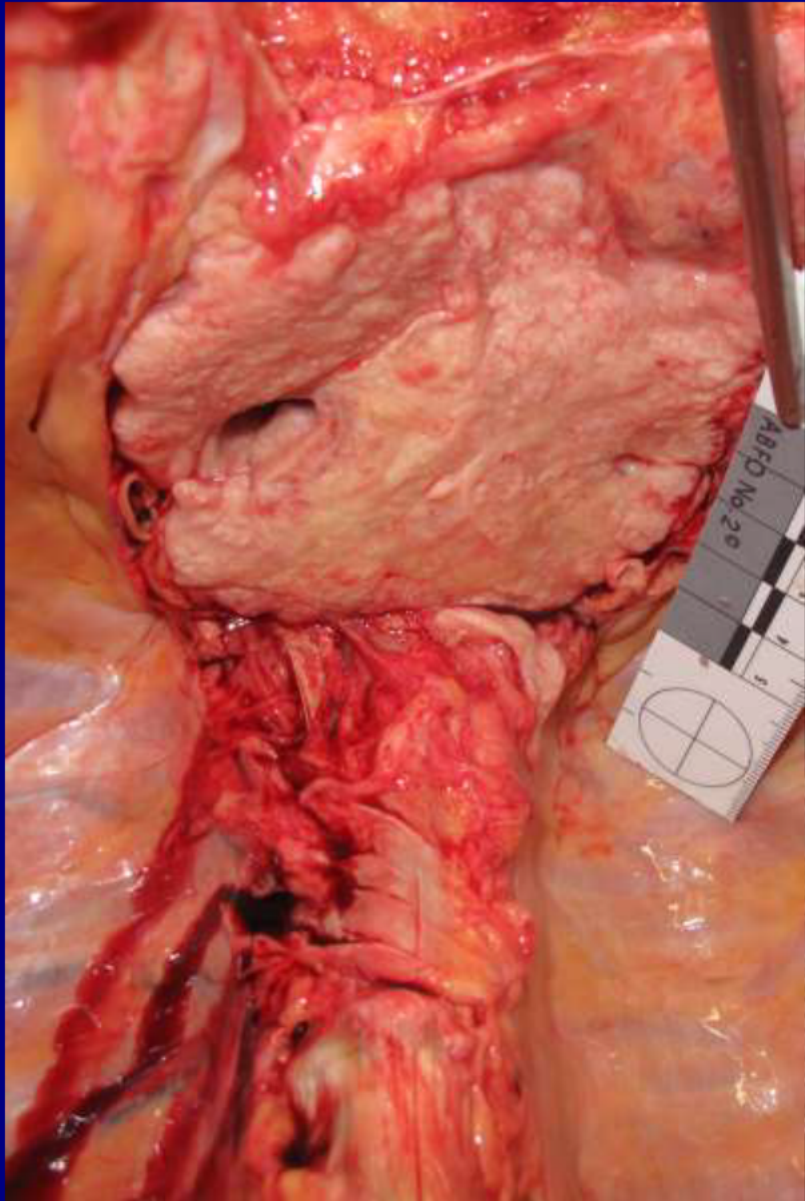
# History

**63 year old male with known advanced stage lung cancer**

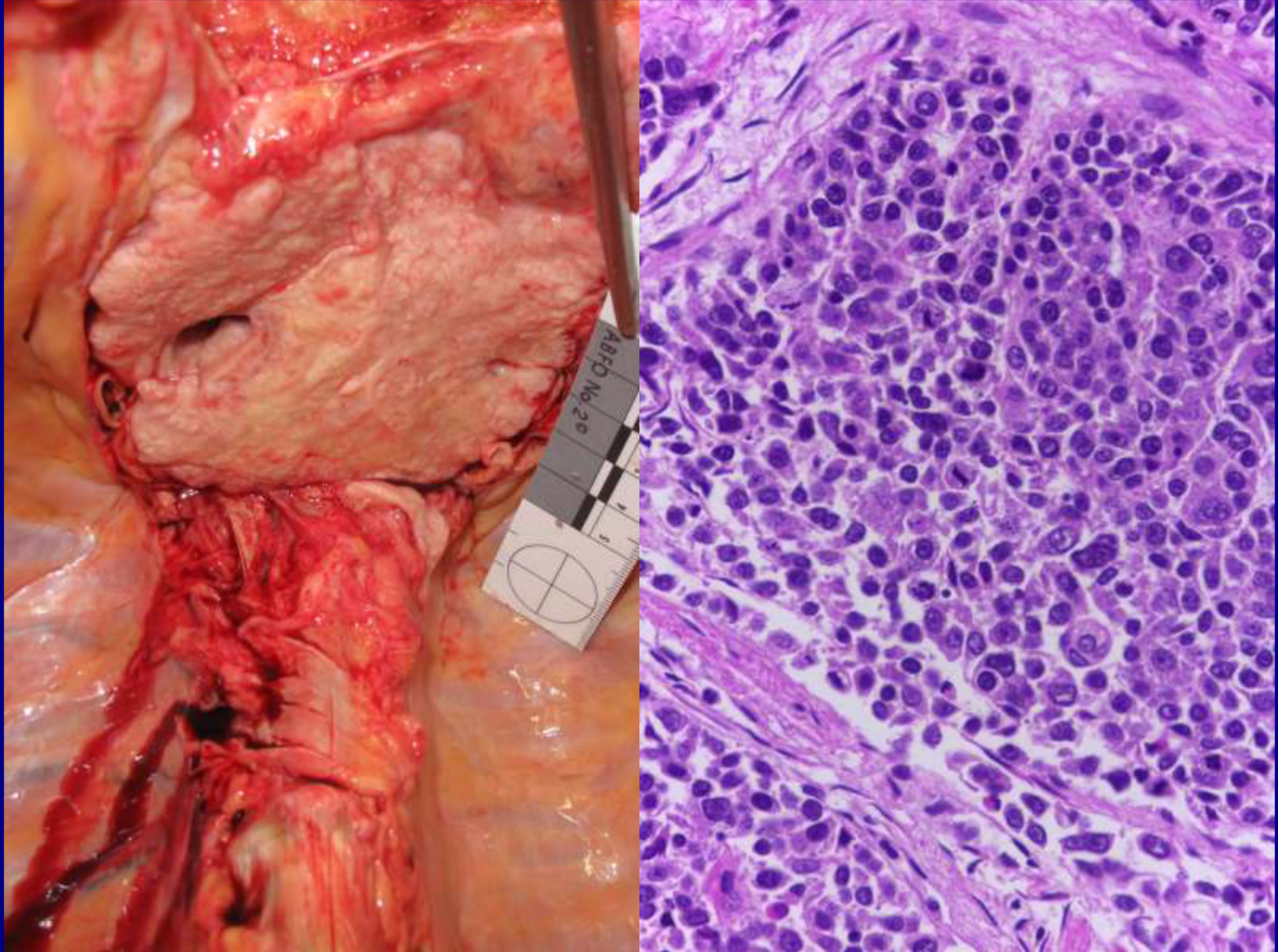
# Mediastinal mass with left lung nodule



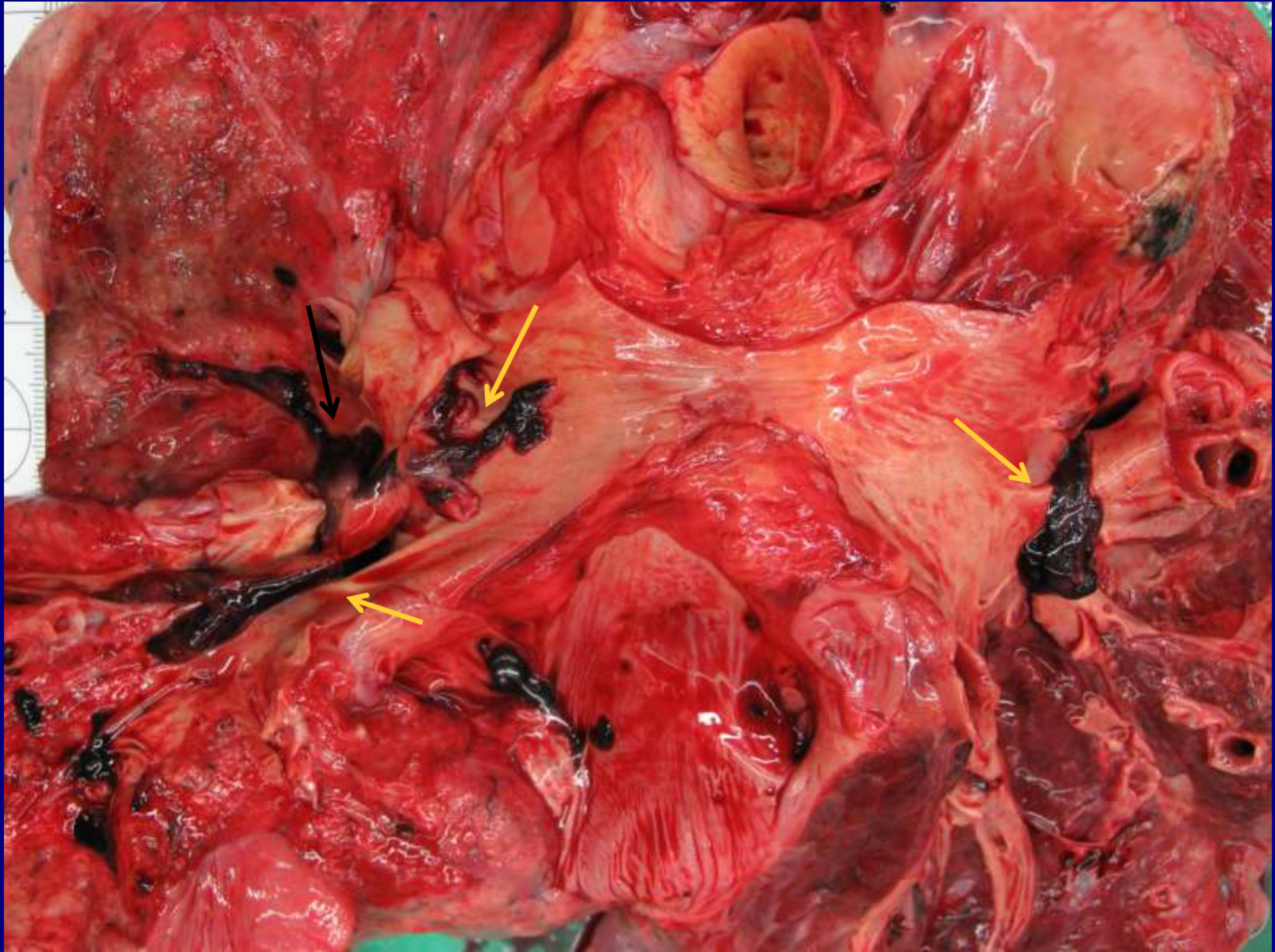












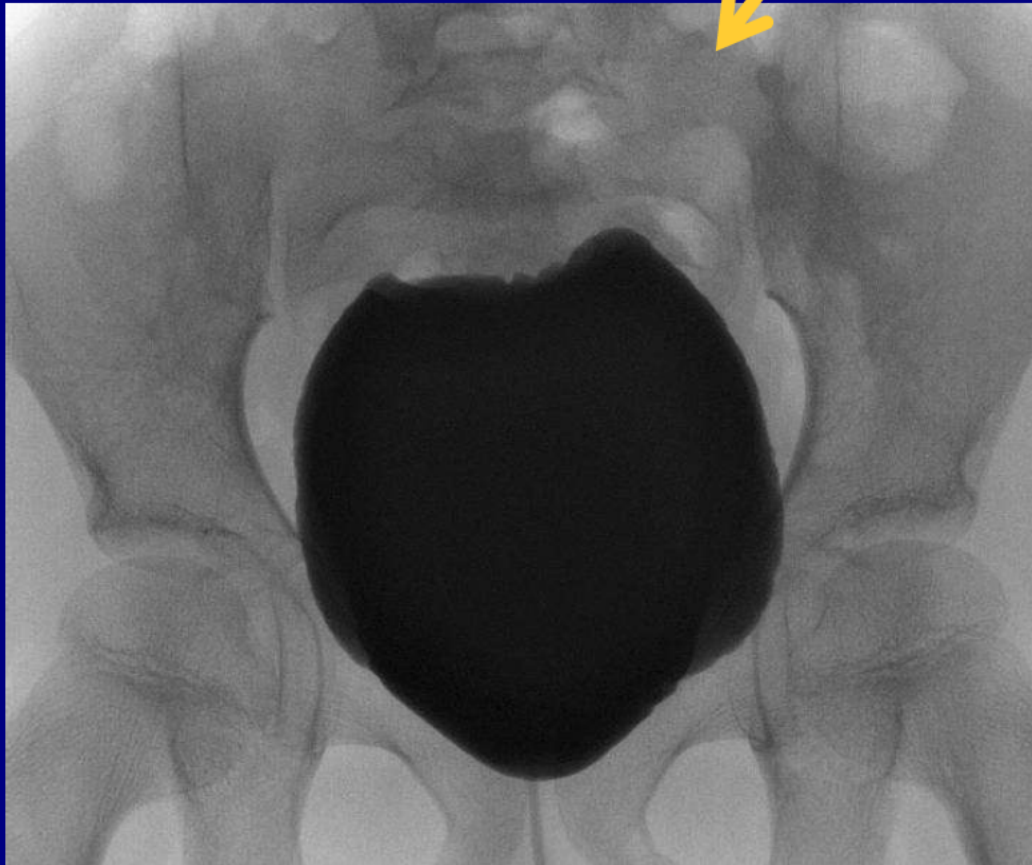
# Squamous Cell Carcinoma with metastasis to the mediastinum

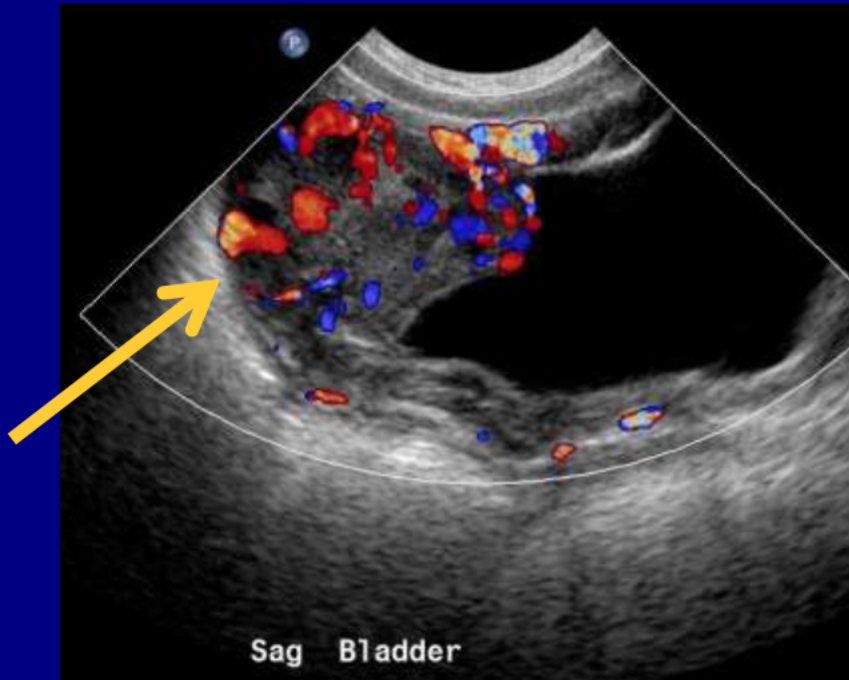
**Caroline Zellweger, MD**  
**Institut für Rechtsmedizin**  
**Zurich, Switzerland**

# Pediatric Best Case

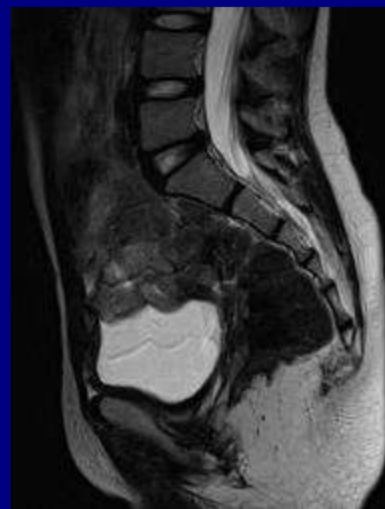
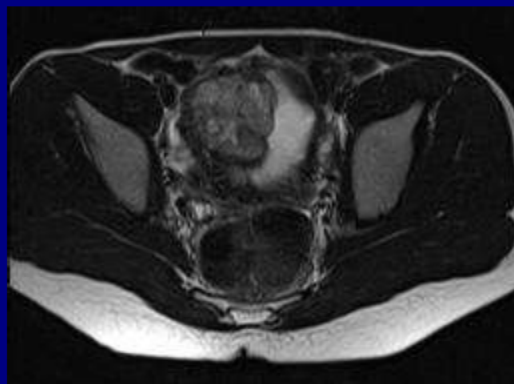
## History

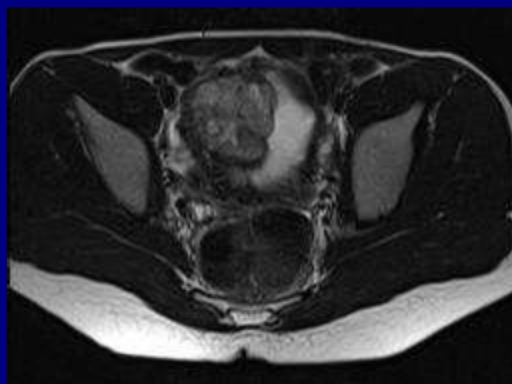
**8 year old African American female presented with repeated headaches and vomiting during voiding and bowel movements. The patient was noted to be hypertensive on presentation with a blood pressure of 140/90.**











# Paraganglioma

**Fraser Loveys, MD**

**Janeway Children's Health and  
Rehabilitation Center**

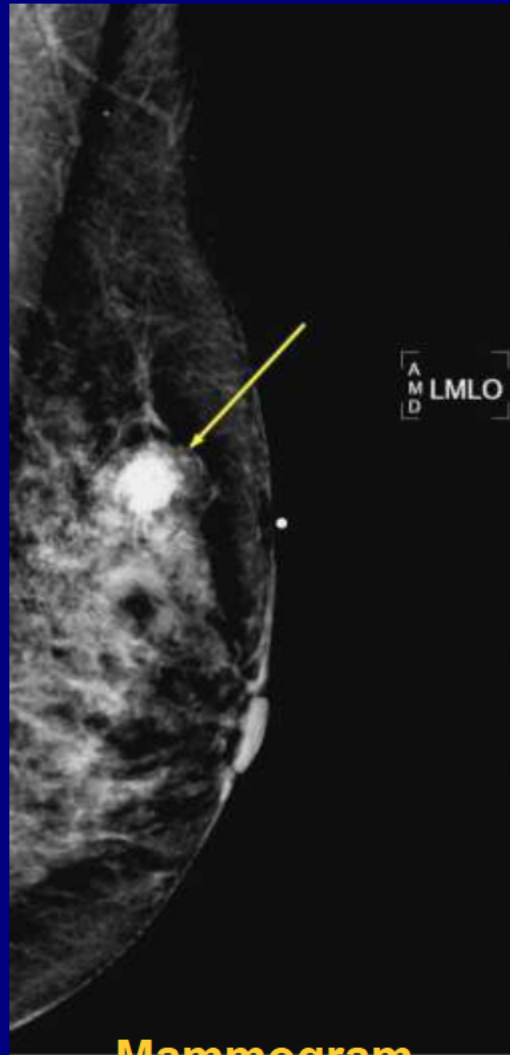
**St. Johns, Newfoundland, Canada**

# Breast Best Case

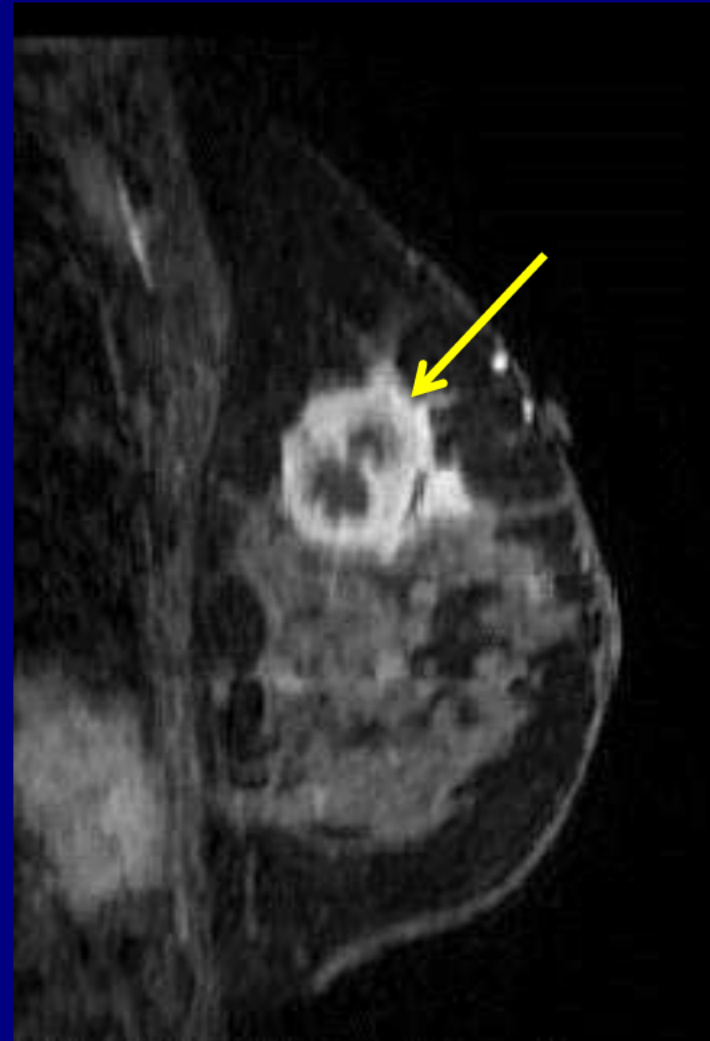
# History

**56 yo African American female  
noted a lump in her left breast.**

## Diagnostic Left Mammogram and MRI

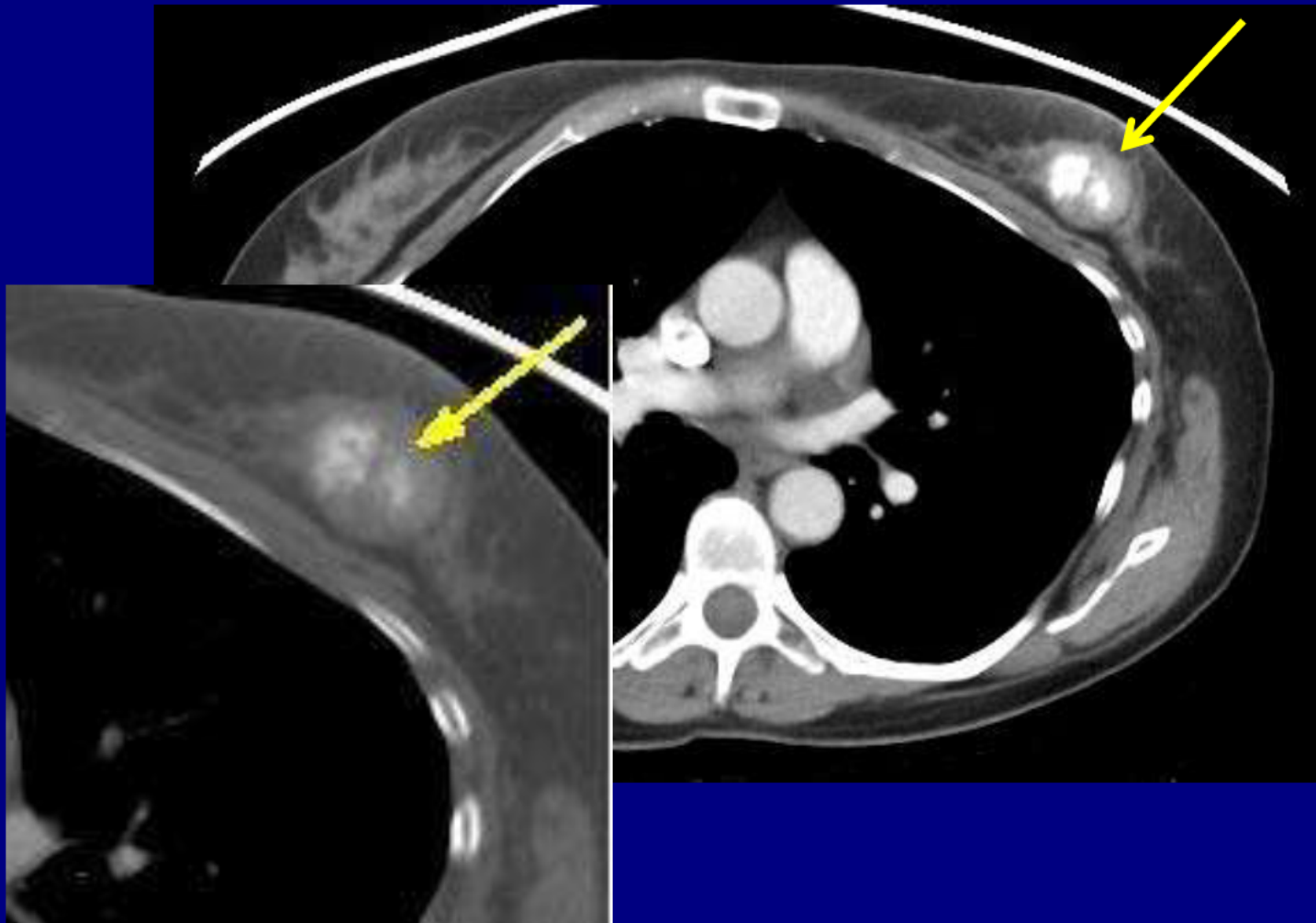


**Mammogram**



**MRI**

# Chest CT

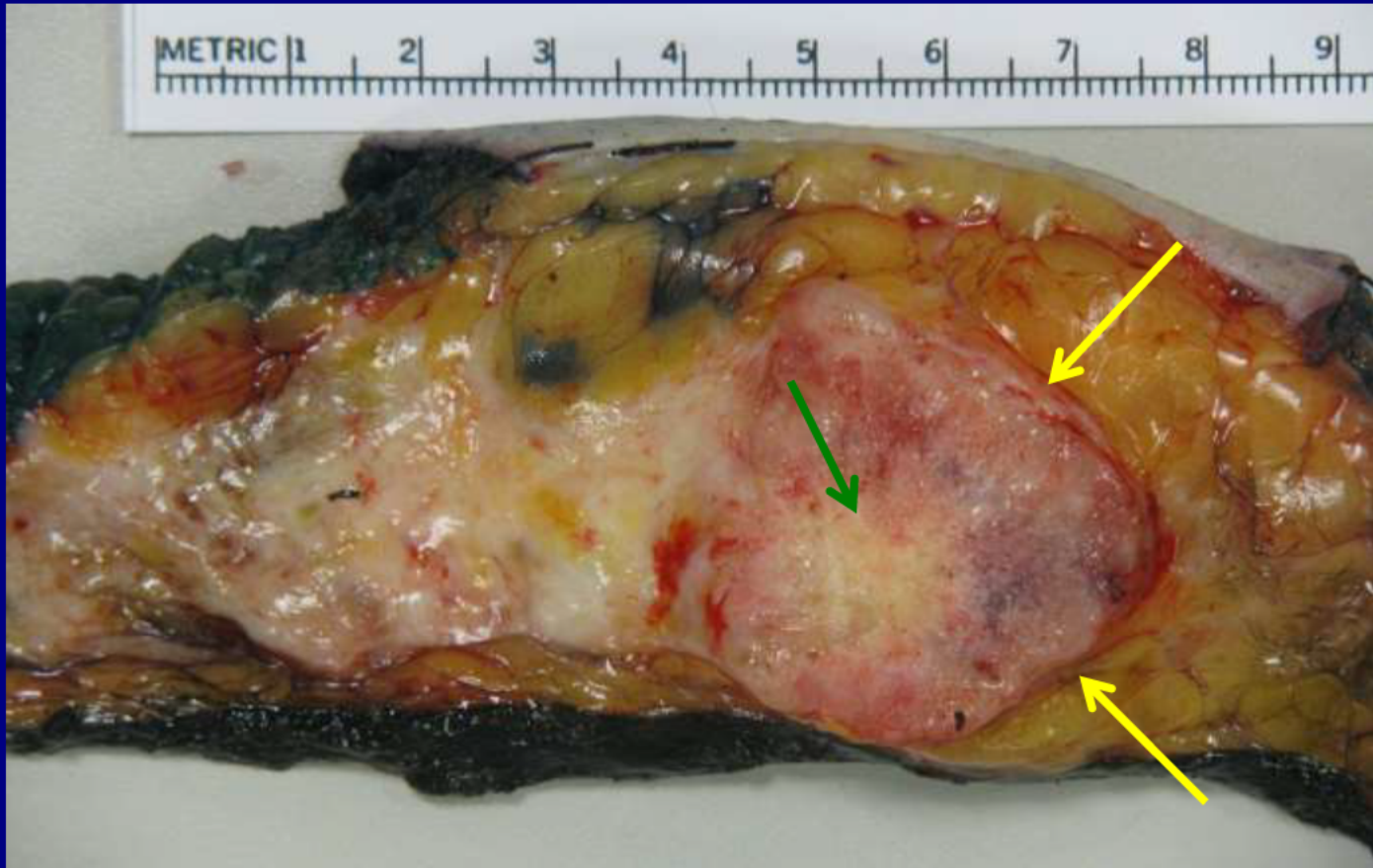


# Technetium-99m- MDP whole body bone scan

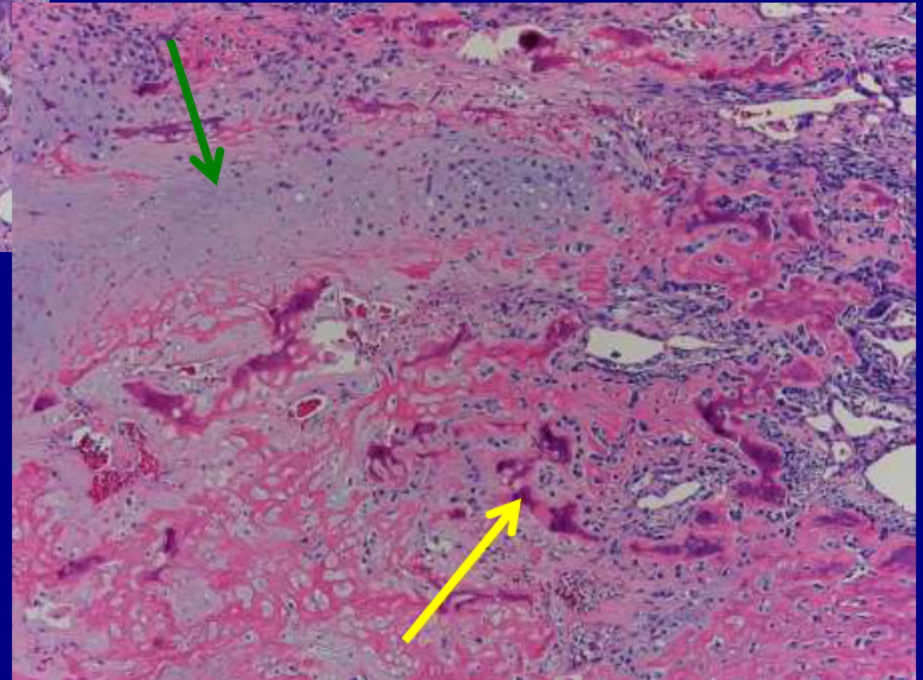
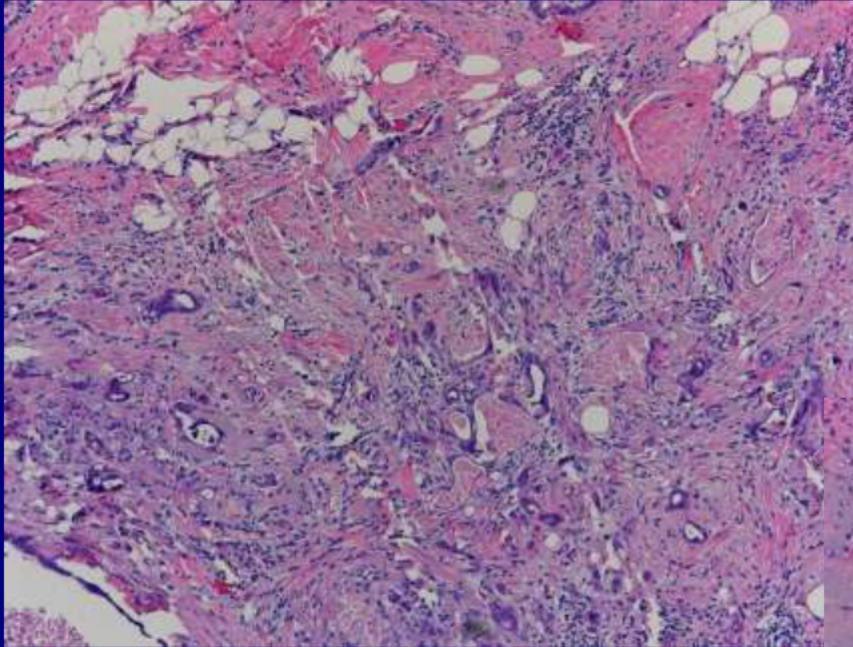




# Mastectomy Specimen



# Histology



# **Metaplastic Carcinoma**

**Eric Blaschke, MD**

**University of Chicago Medicine**

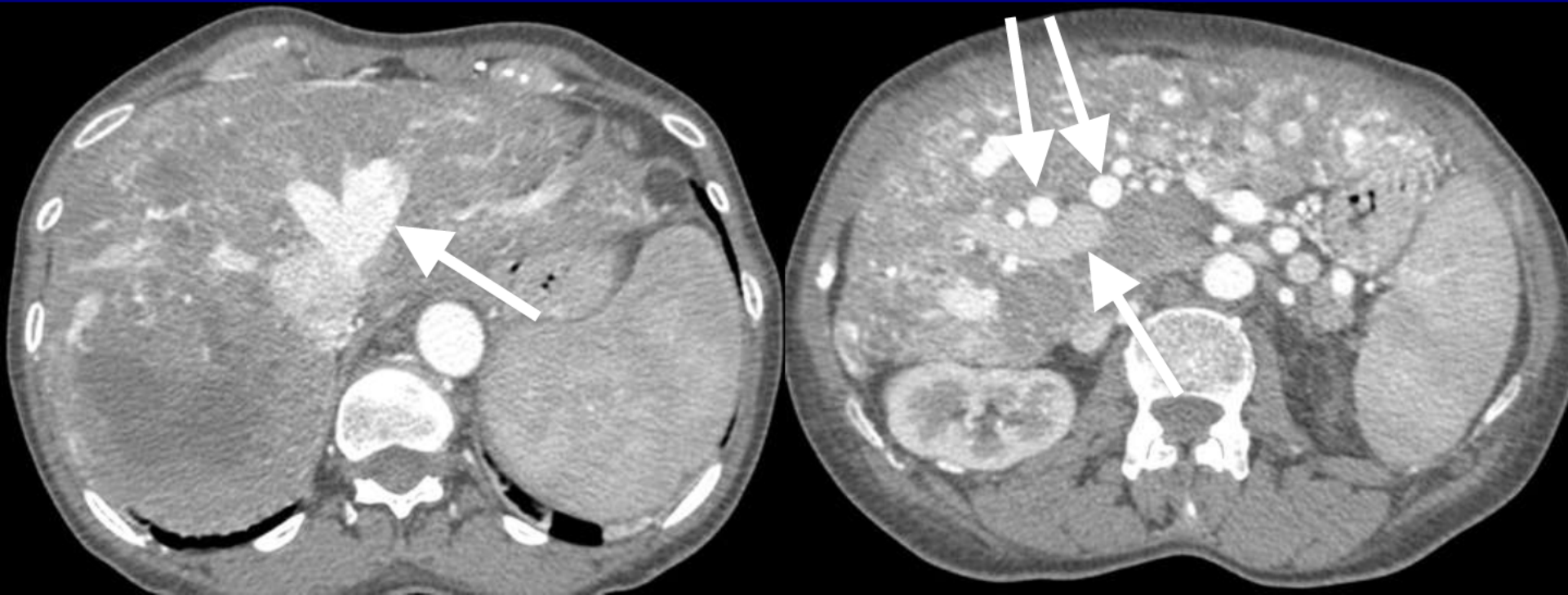
**Chicago, Illinois**

# Gastrointestinal Best Case

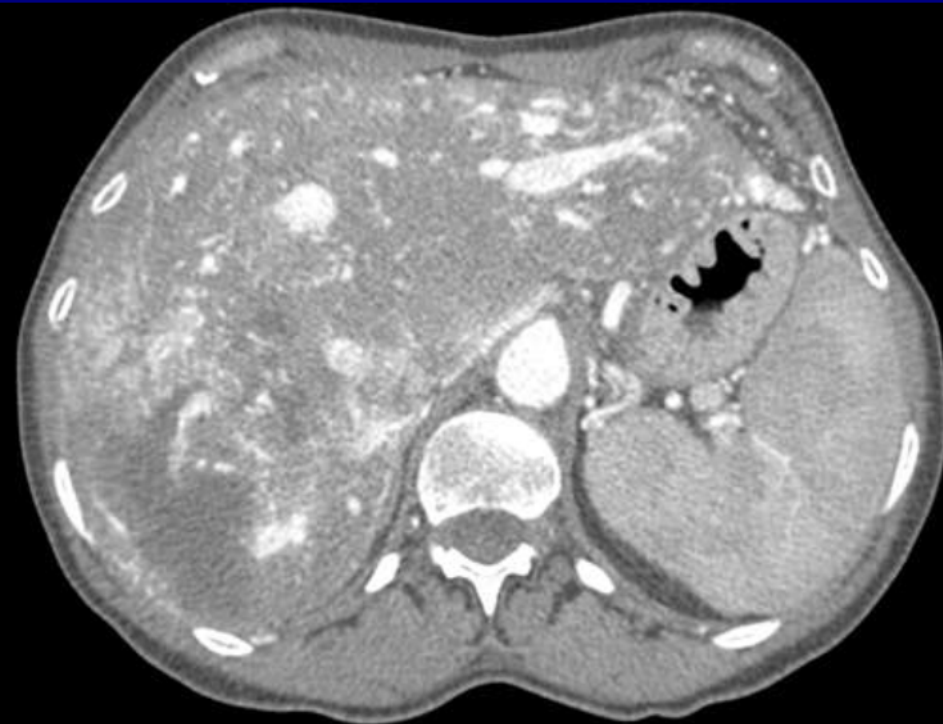
# History

**66-year-old woman with abdominal pain, fever, and a history of heart failure and recurrent epistaxis.**





Hepatic arterial phase

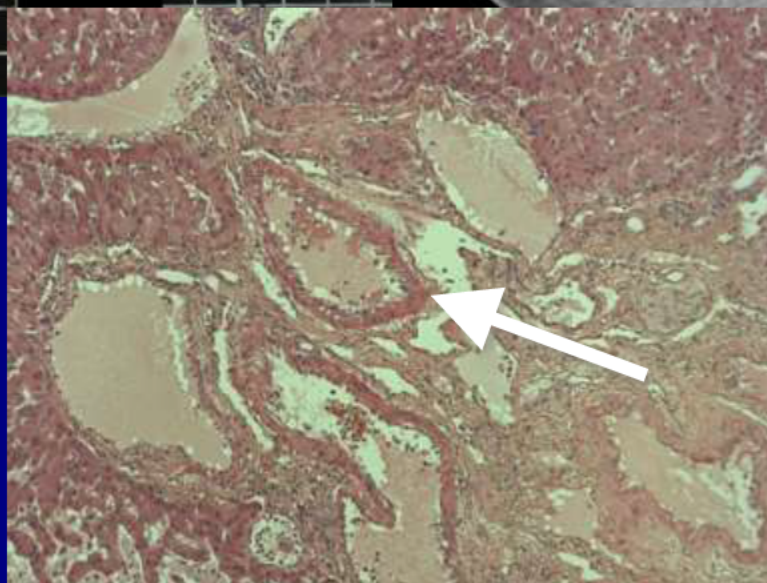


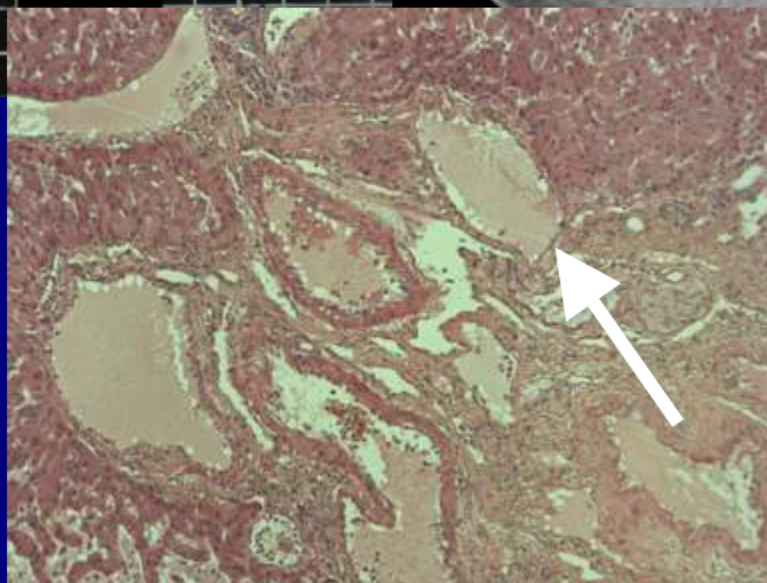
Hepatic arterial phase



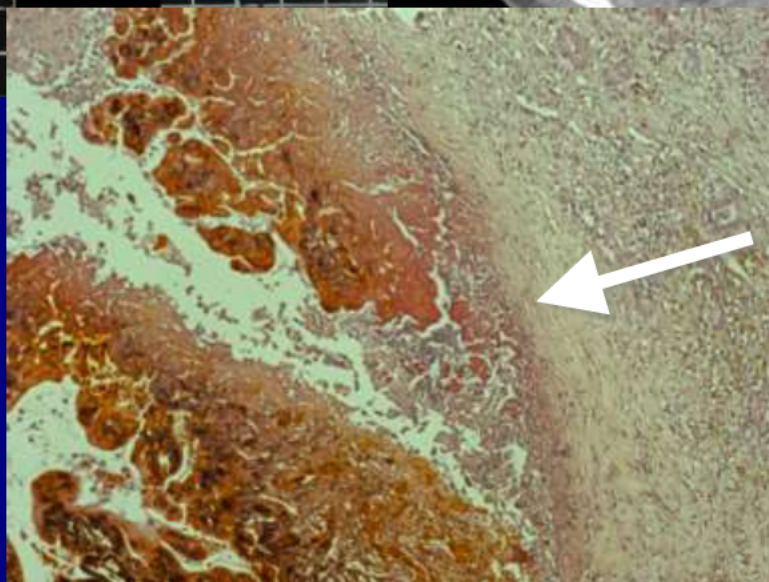
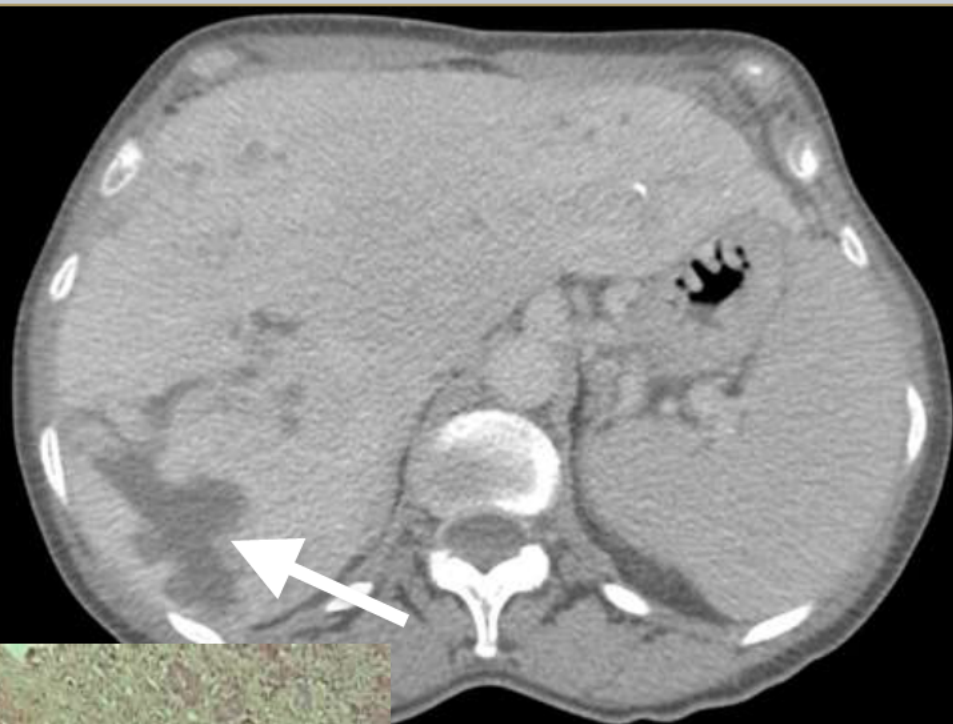
Equilibrium phase

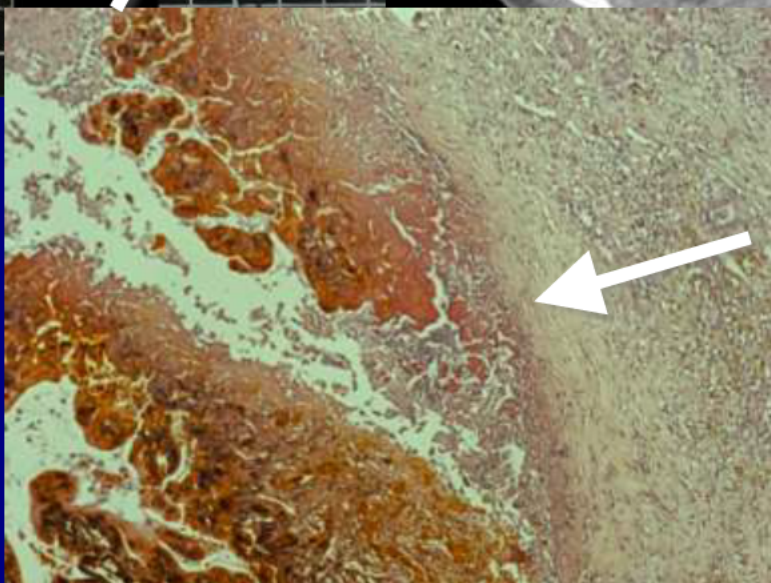
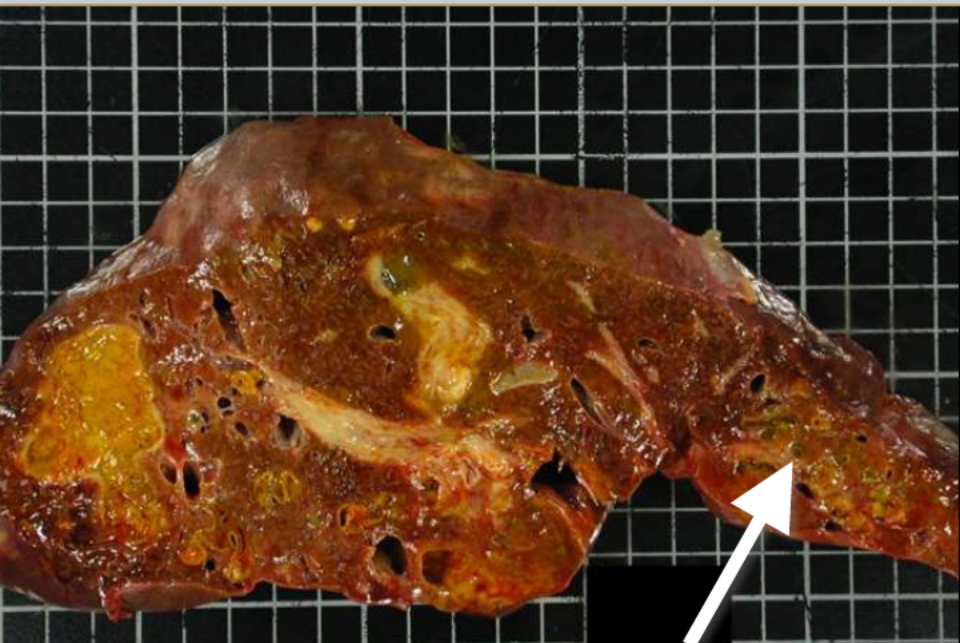












# Hereditary Hemorrhagic Telangiectasia with Biliary Necrosis

**Augustin Lecler, MD**  
**Hôpital Beaujon**  
**Clichy, France**



**Many thanks to all of you for  
submitting such great cases!  
Have a safe trip home**

**From the staff of the  
American Institute for Radiologic Pathology**