

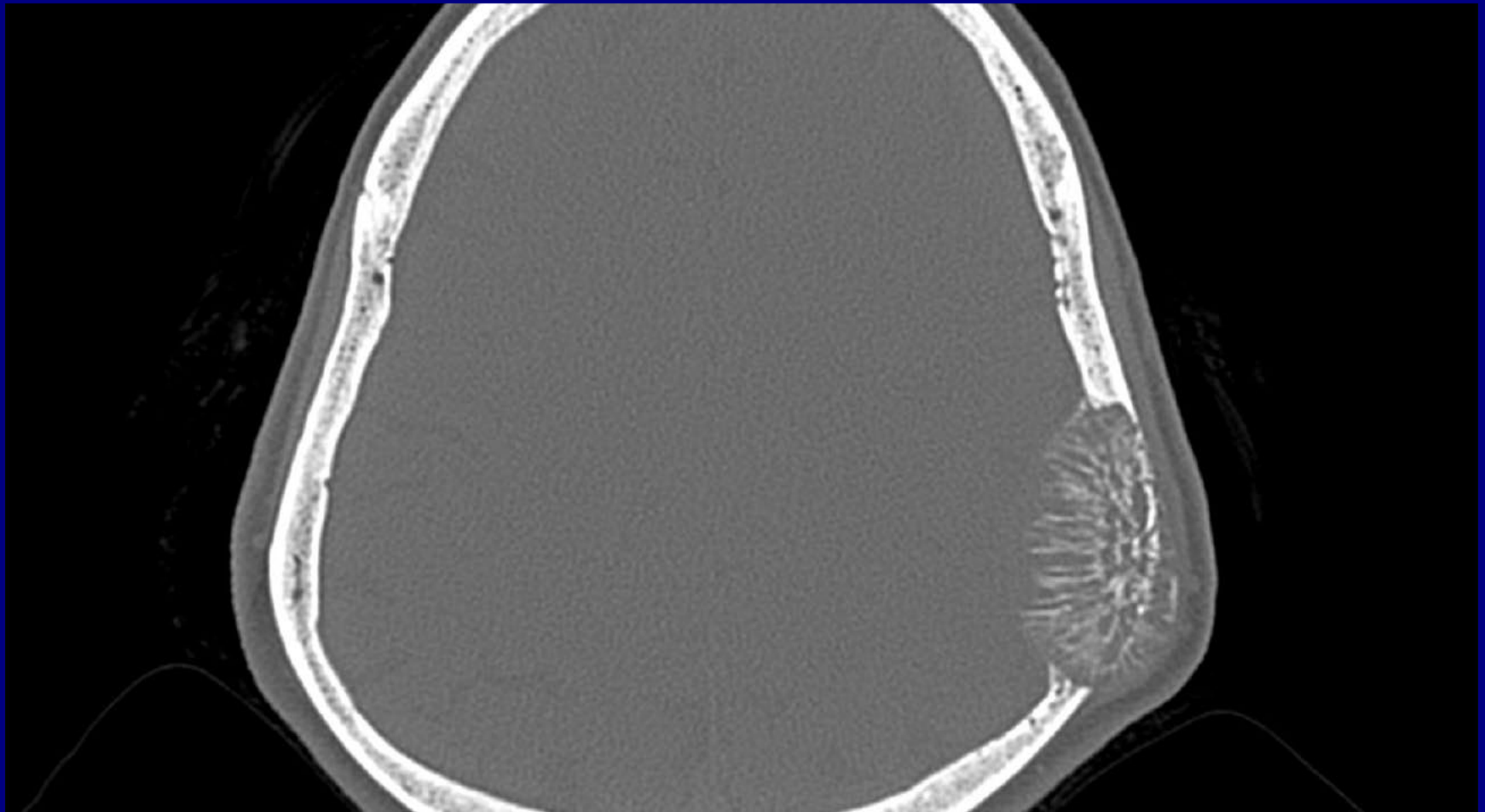
BEST CASES OF THE AIRP

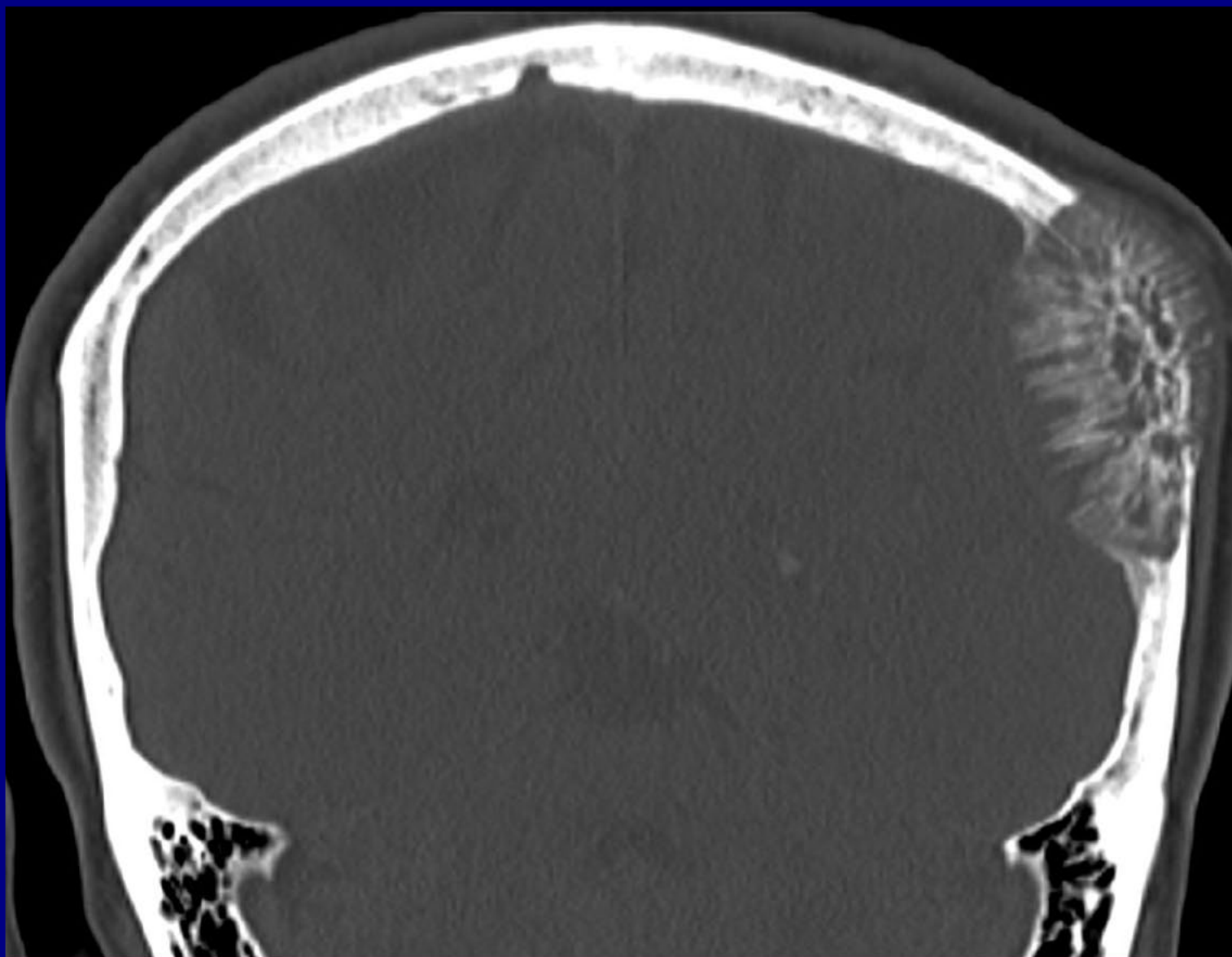
September 26 – October 14, 2011

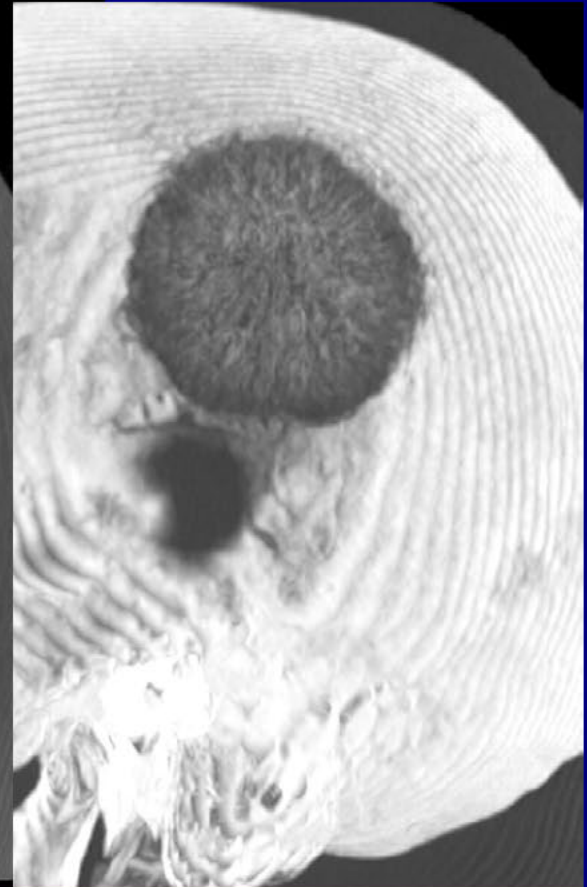
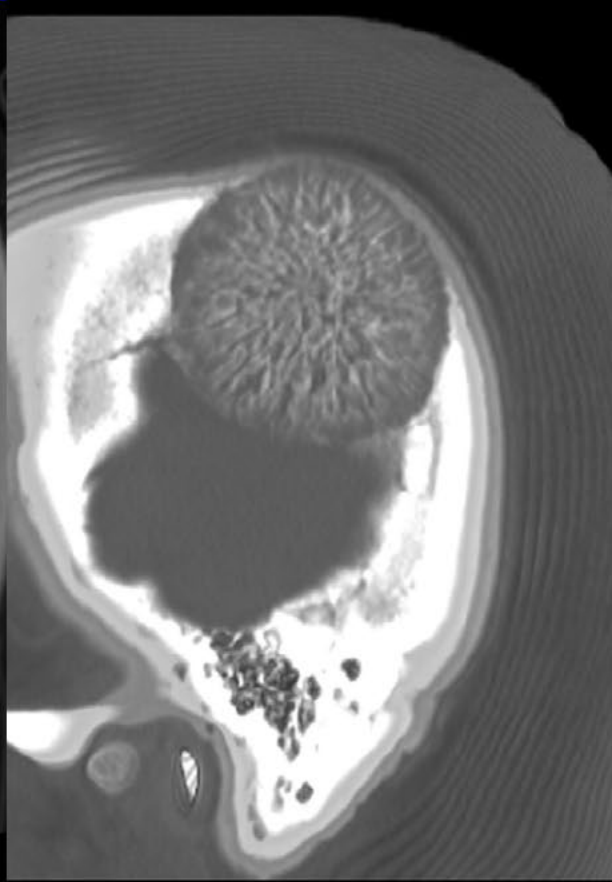
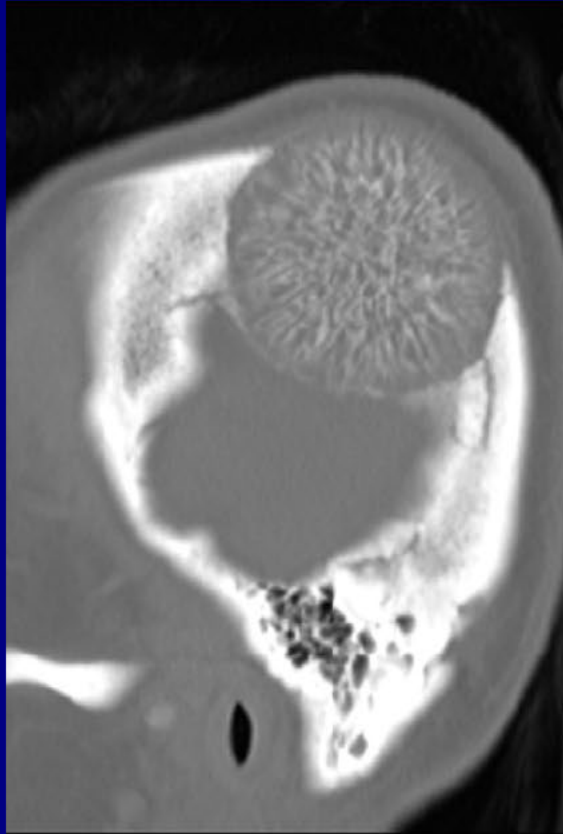
Musculoskeletal Best Case

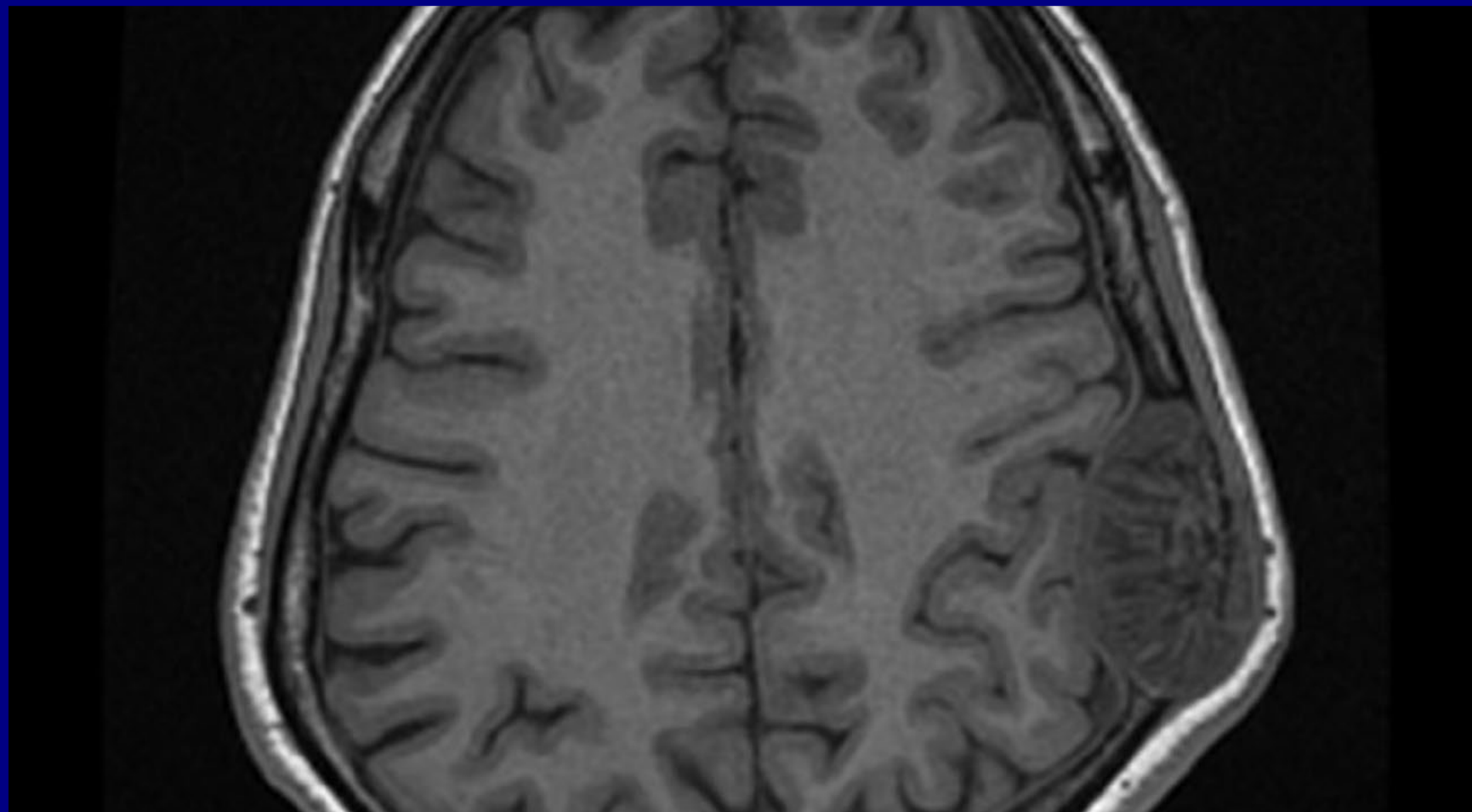
59-year-old Caucasian female with a tender, slowly enlarging mass over the left parietal region

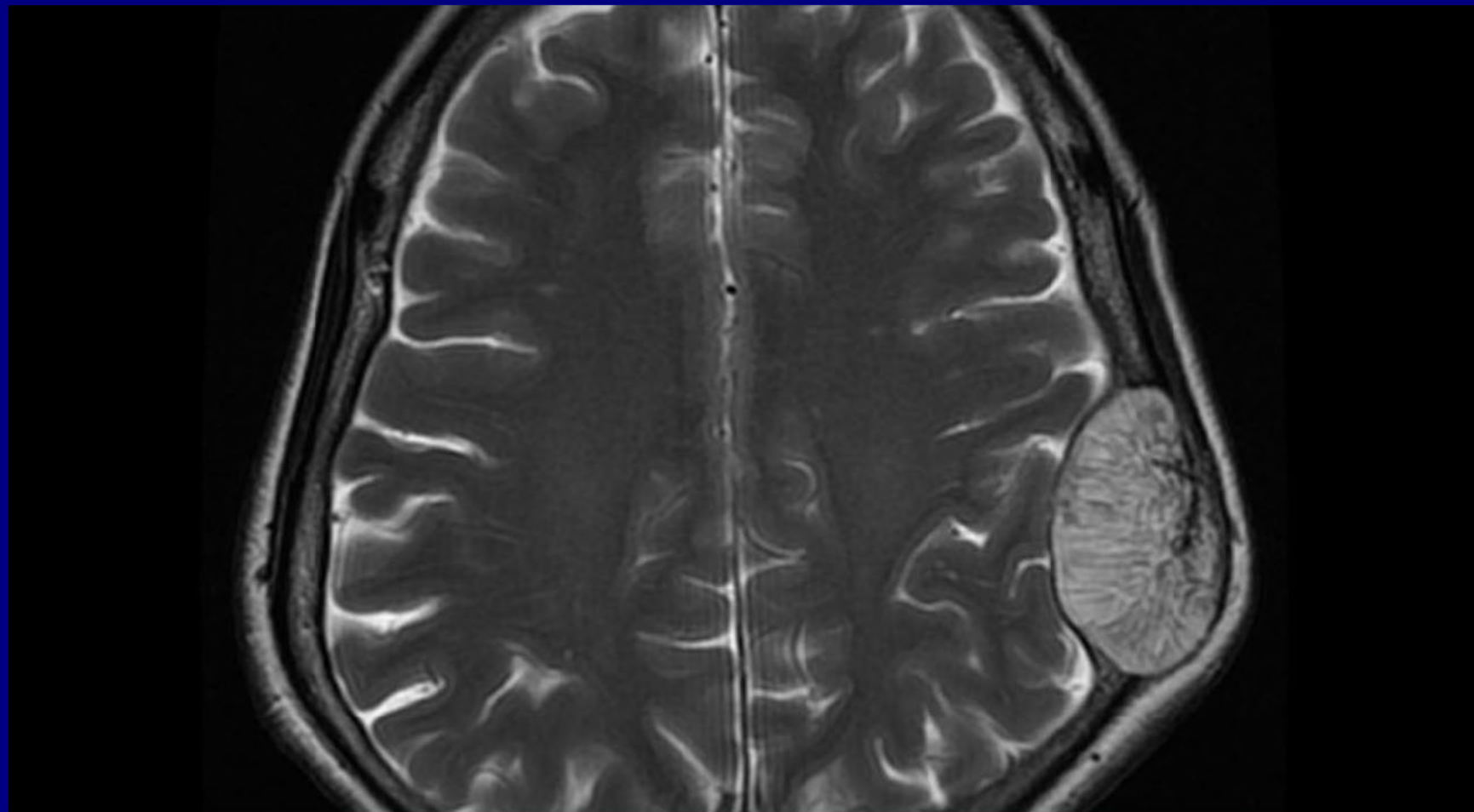


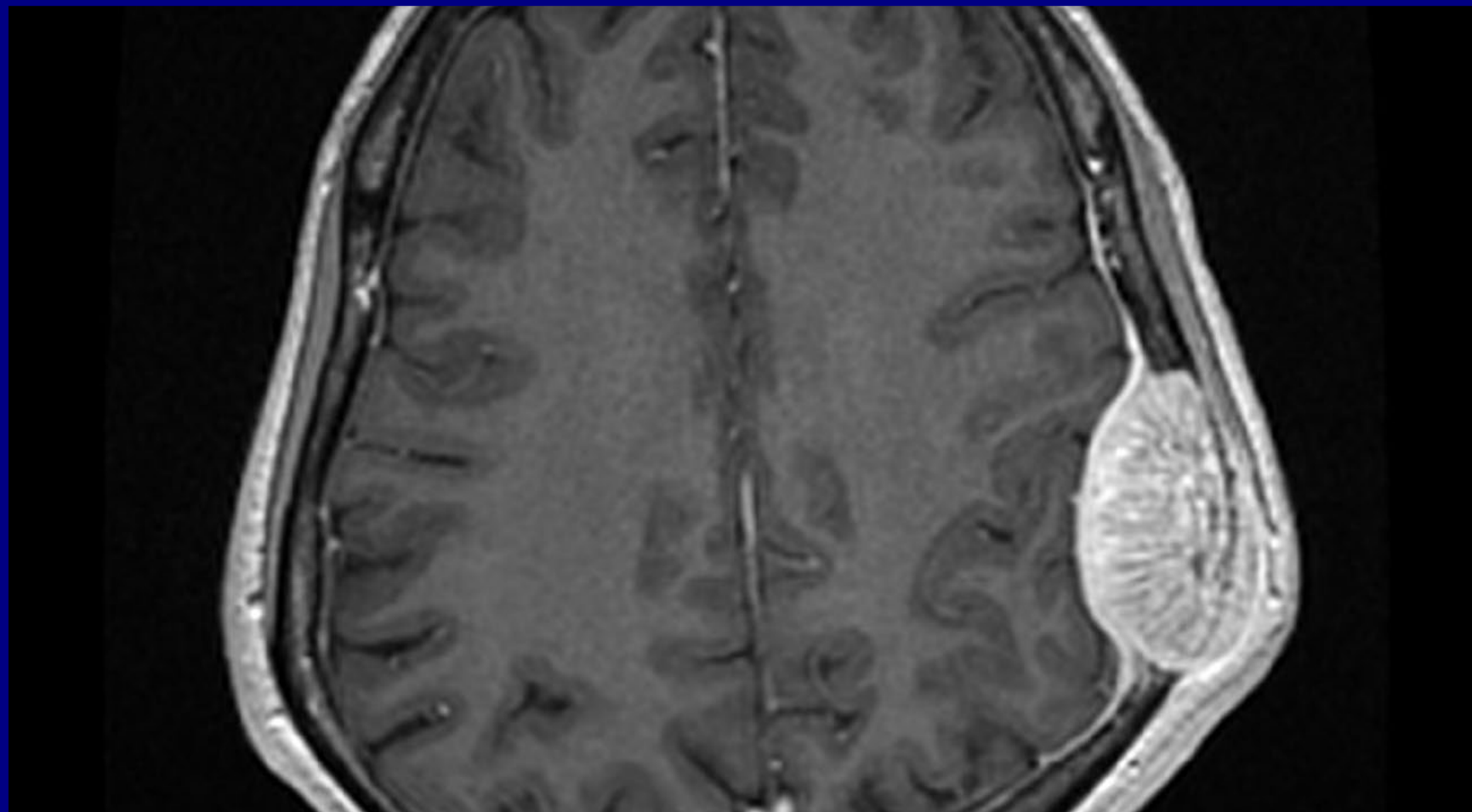


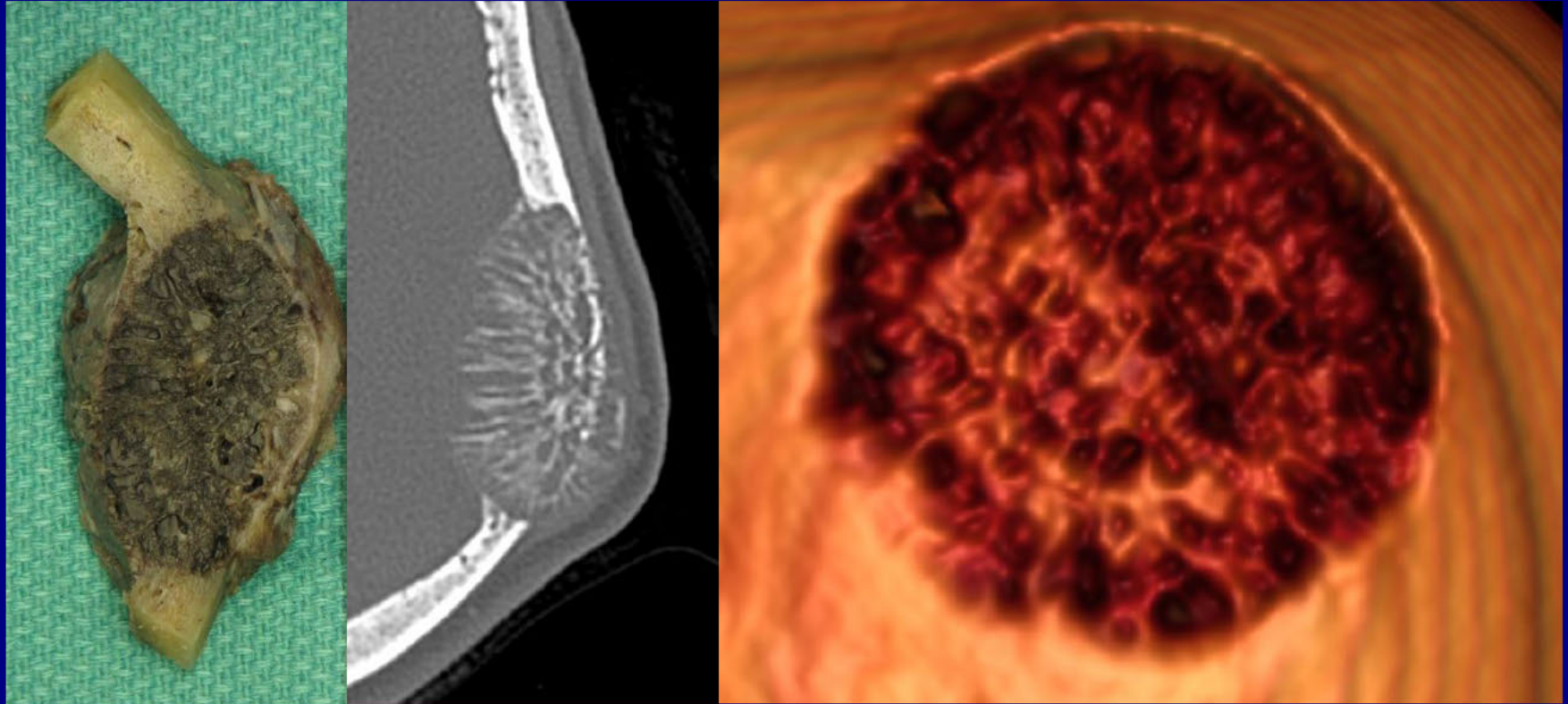


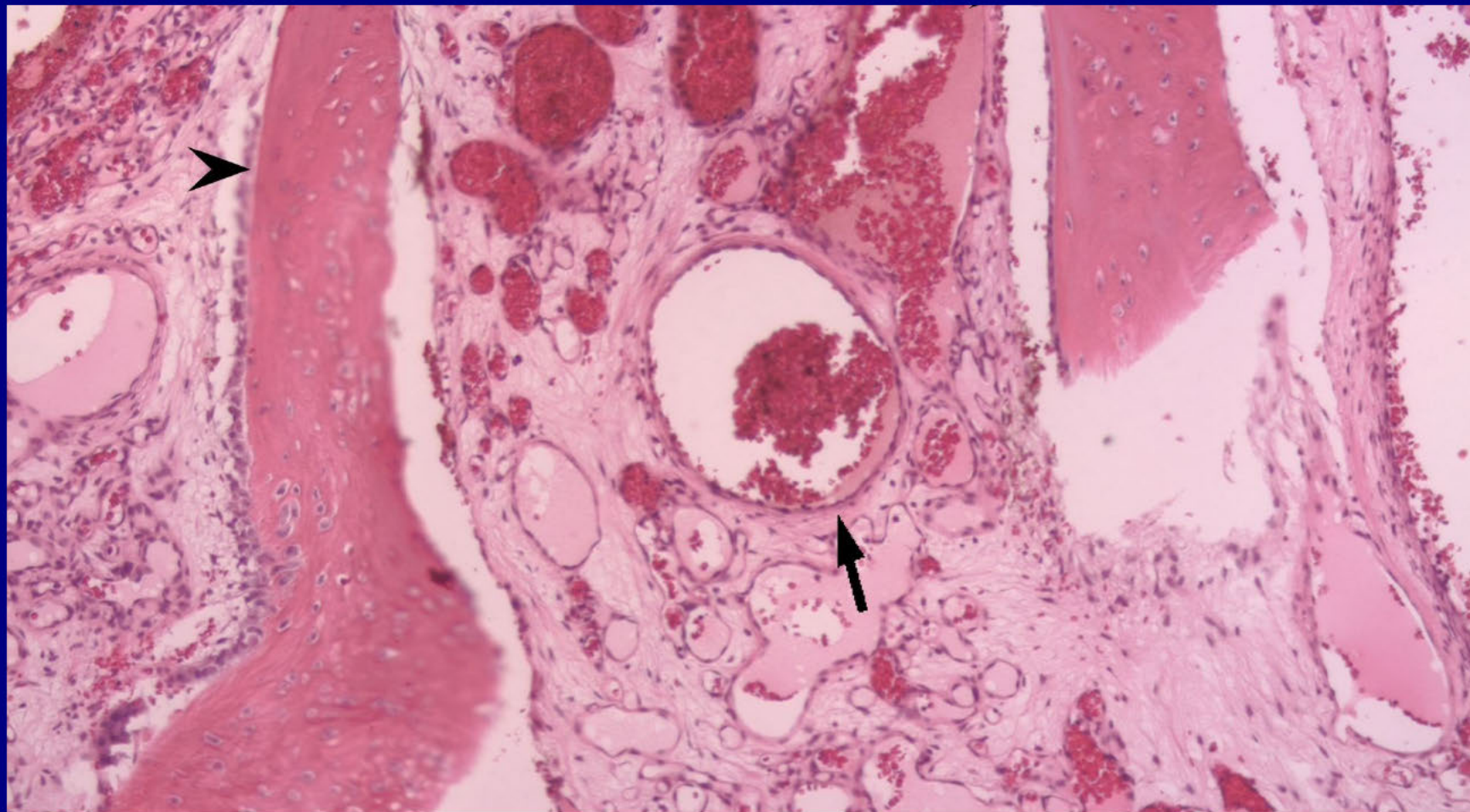


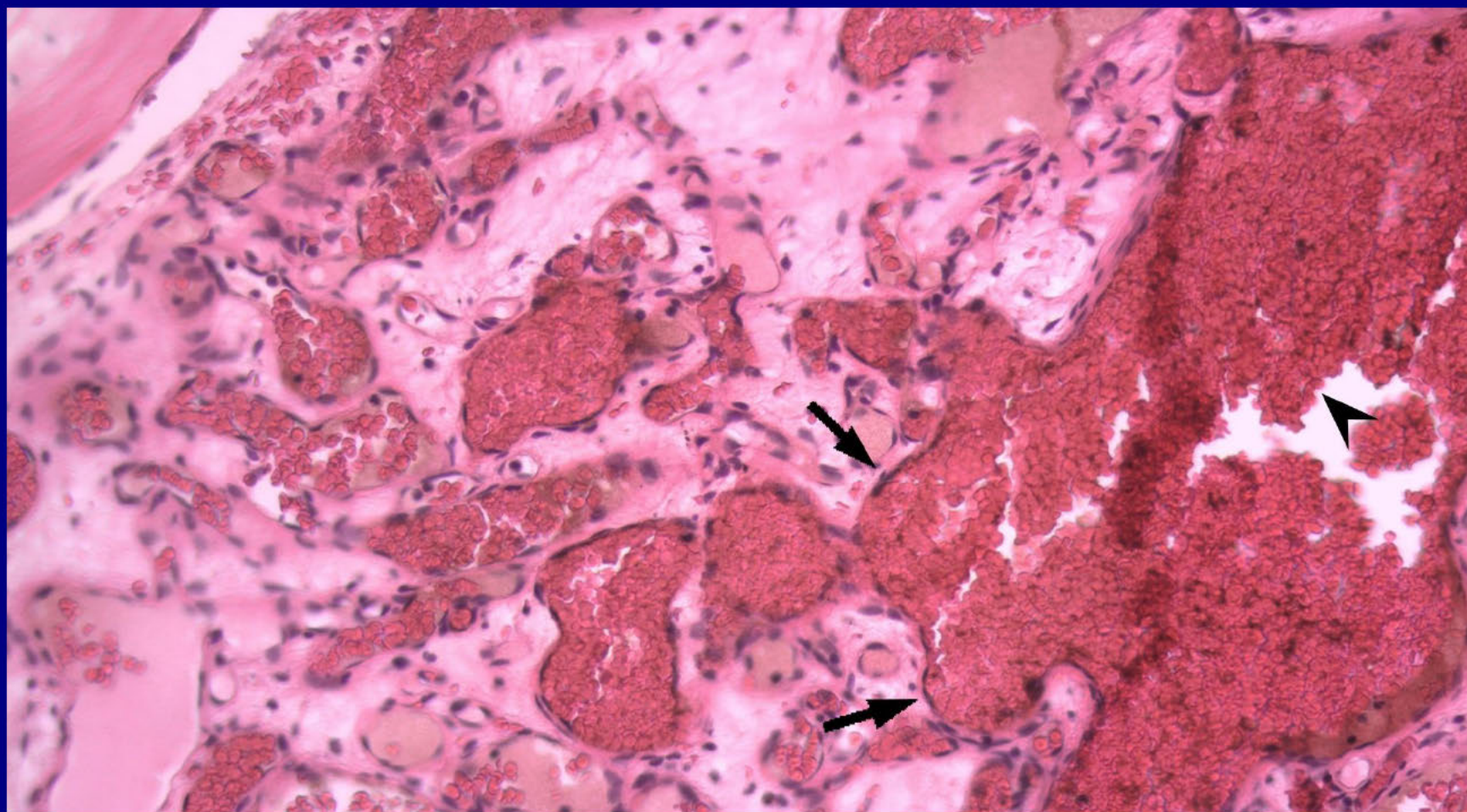












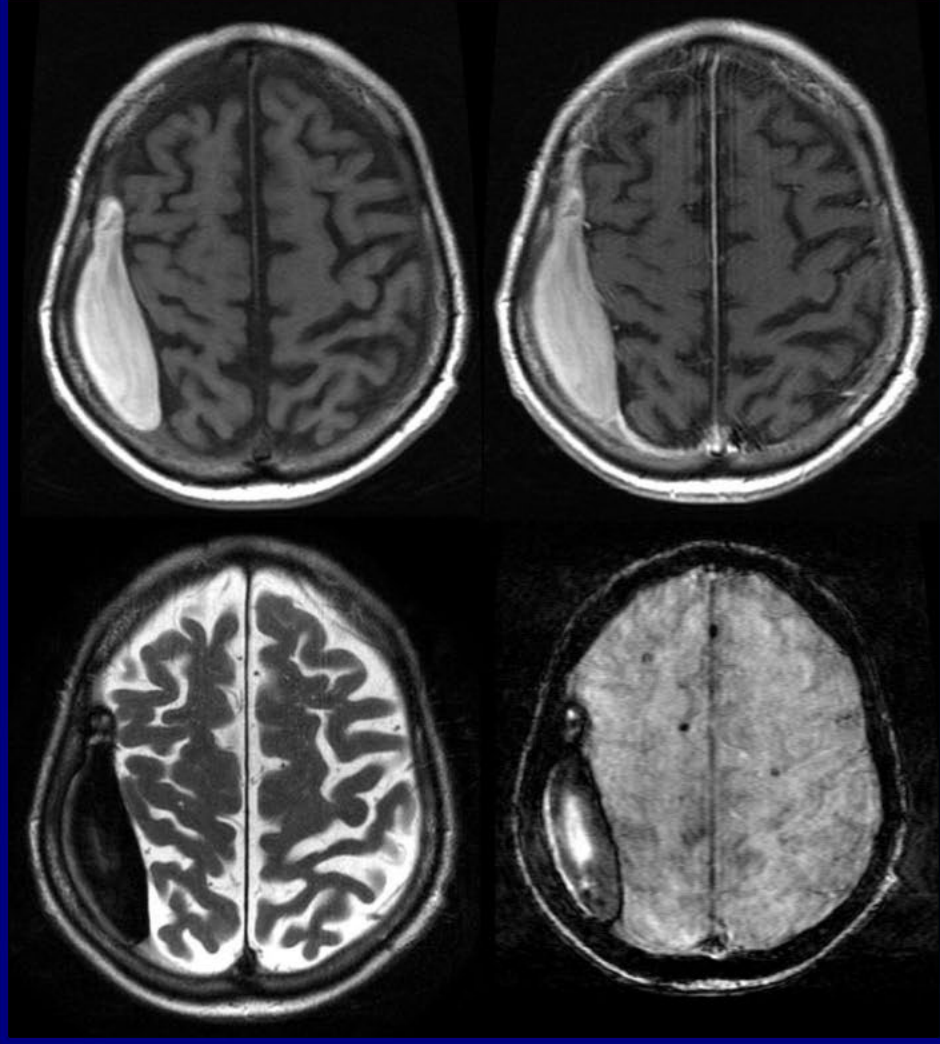
Intraosseous Hemangioma, Cavernous Subtype

Ah-Ling Cheng, MD
Foothills Medical Centre
Calgary, Alberta, Canada

Neuroradiology Best Case

83-year-old male with history of known chronic atrial fibrillation for which he was anticoagulated with warfarin. Patient presented with c/o at least 2 weeks of increasing lightheadedness and weakness as well as gross hematuria and melena. On the morning of presentation, he had an episode of nausea and vomiting. While getting up from the toilet, he had a syncopal event and fell, striking his right side and back on the tub, associated with bowel and bladder incontinence.





Subdural Hematoma with Mature Subdural Membranes

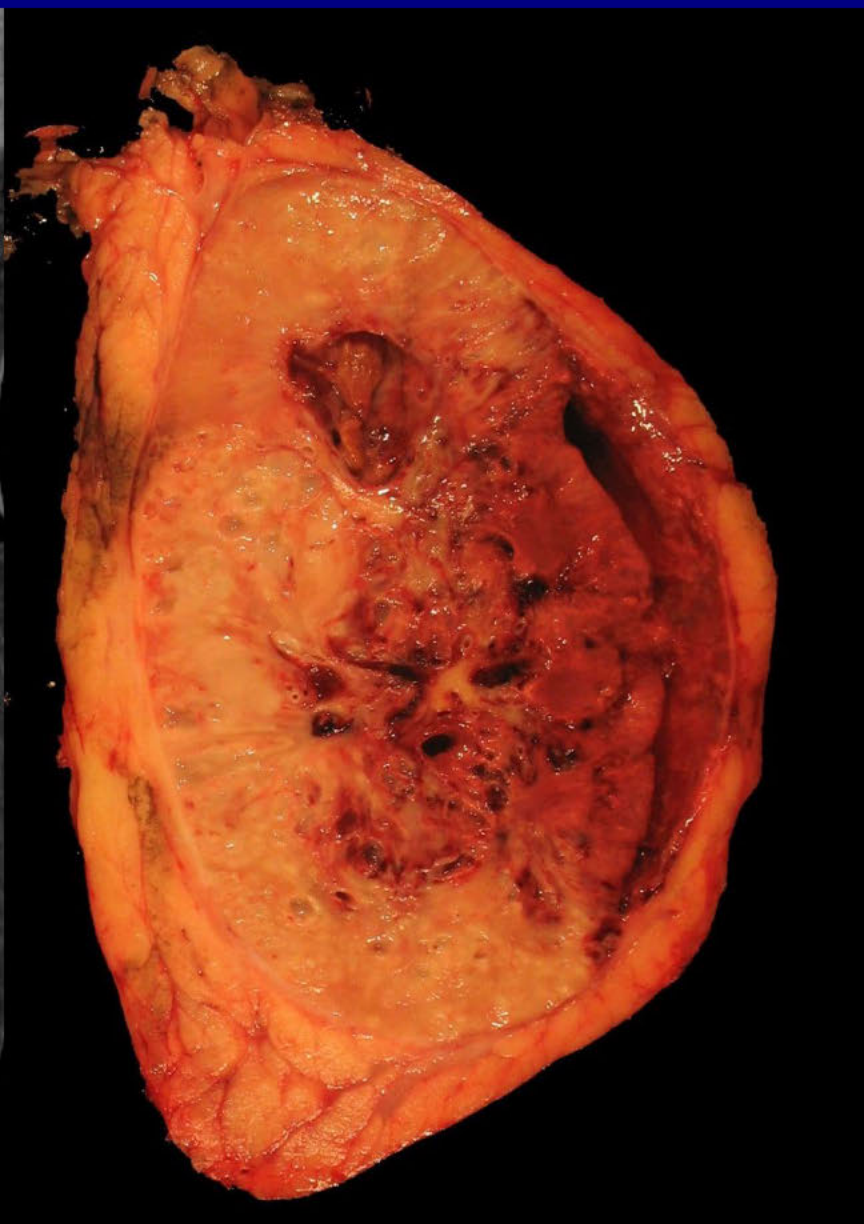
Justin Lewis, MD

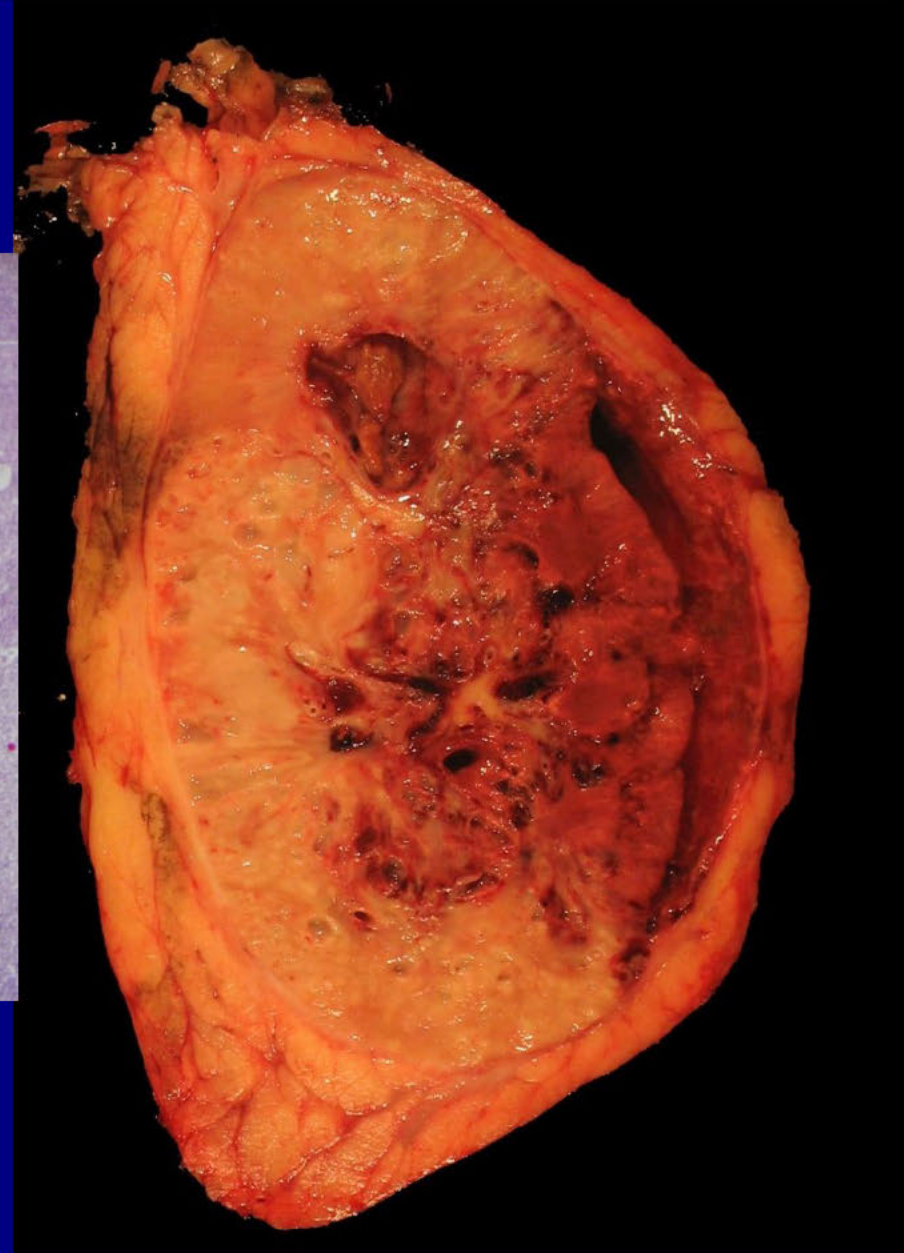
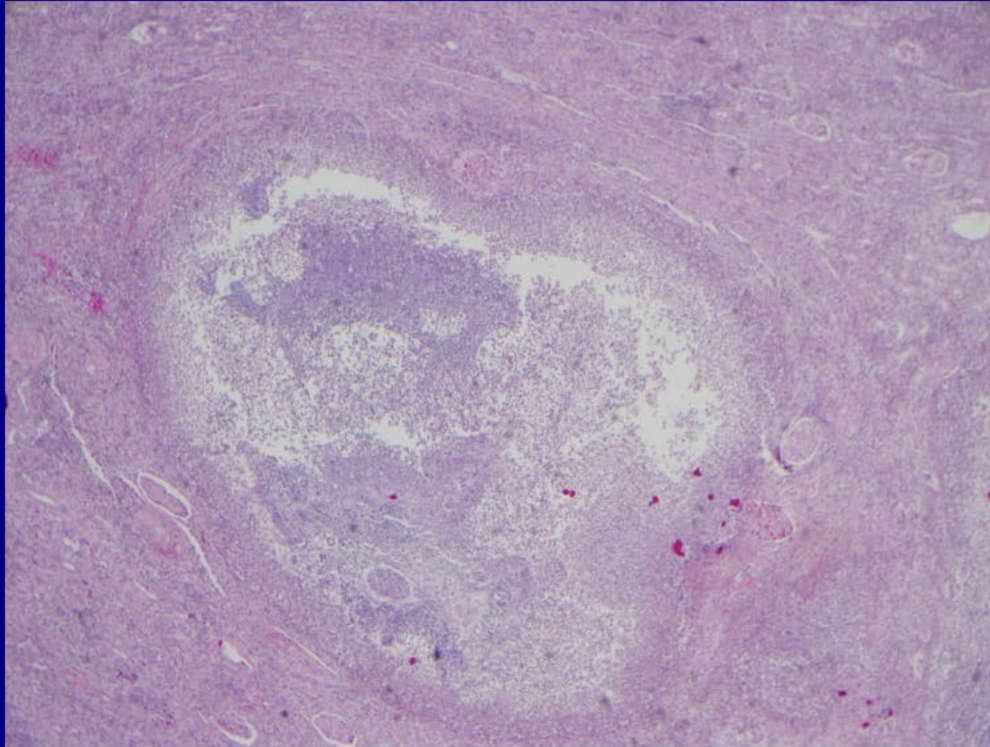
Dartmouth-Hitchcock Medical Center
Lebanon, NH

Genitourinary Best Case

58-year-old woman with history of type II diabetes mellitus presenting with nausea/vomiting and hematuria



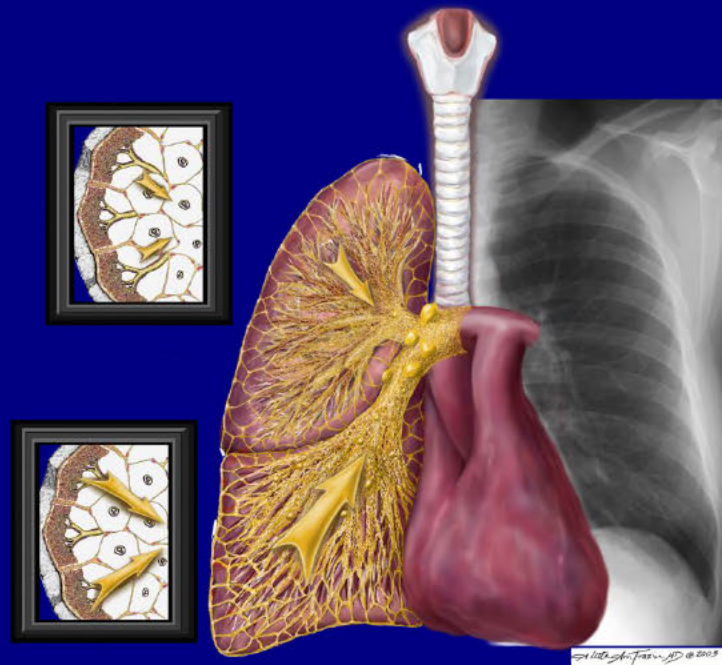




Emphysematous Pyelonephritis

Jonathan Opraseuth, MD
Brigham and Women's Hospital
Boston, MA

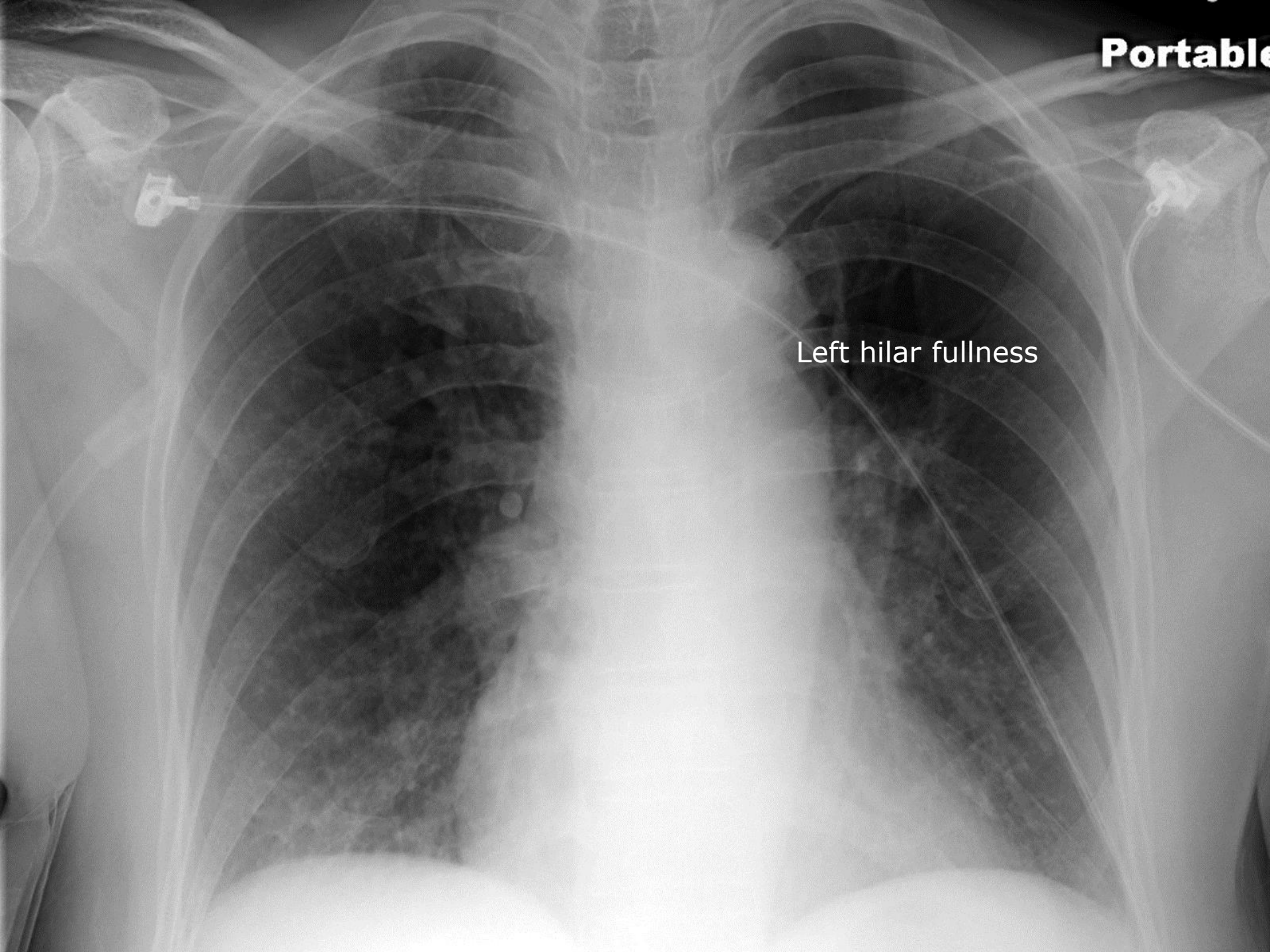
PULMONARY AND MEDIASTINAL IMAGING

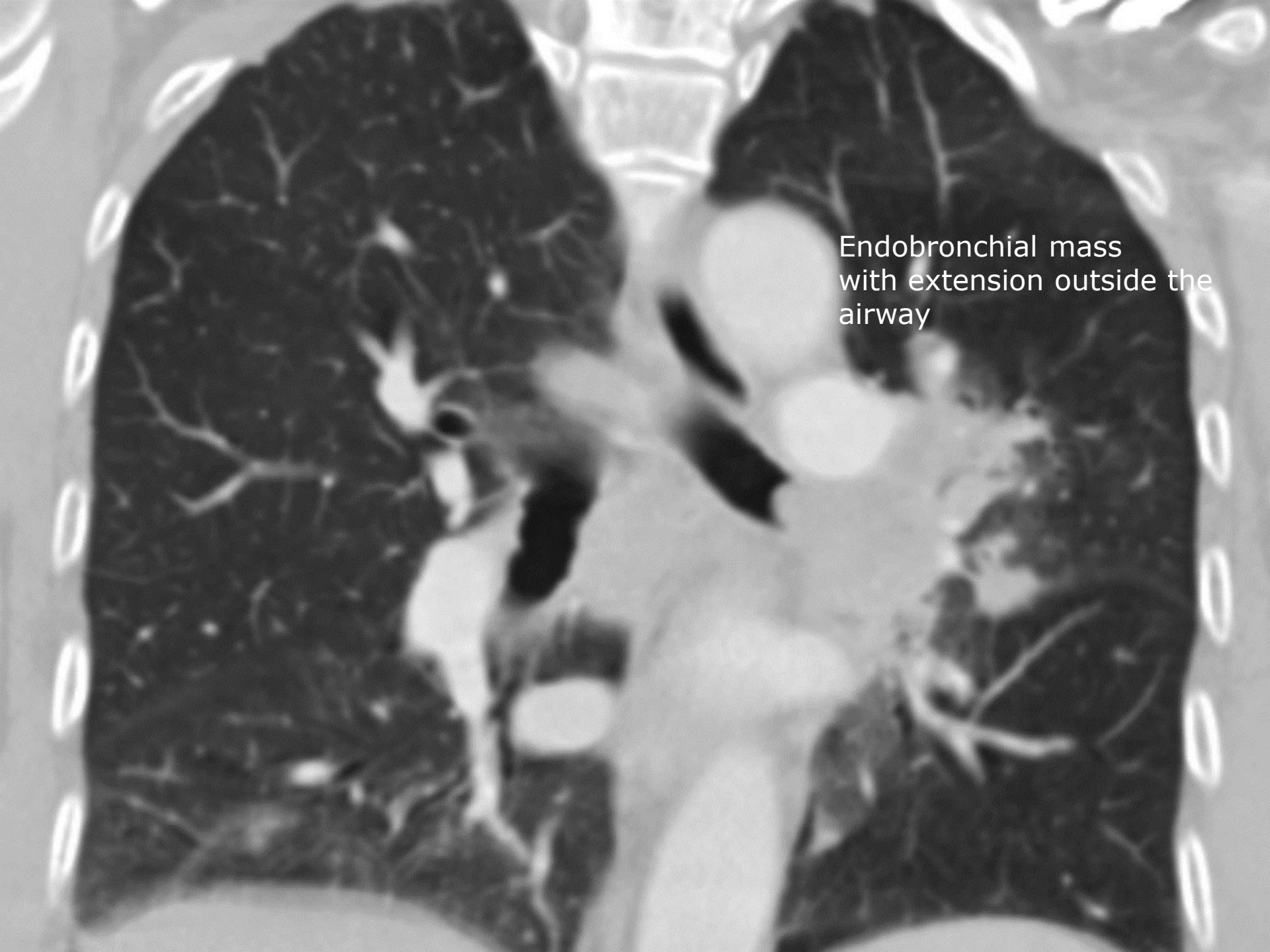


49-year-old female with progressive
dyspnea over months

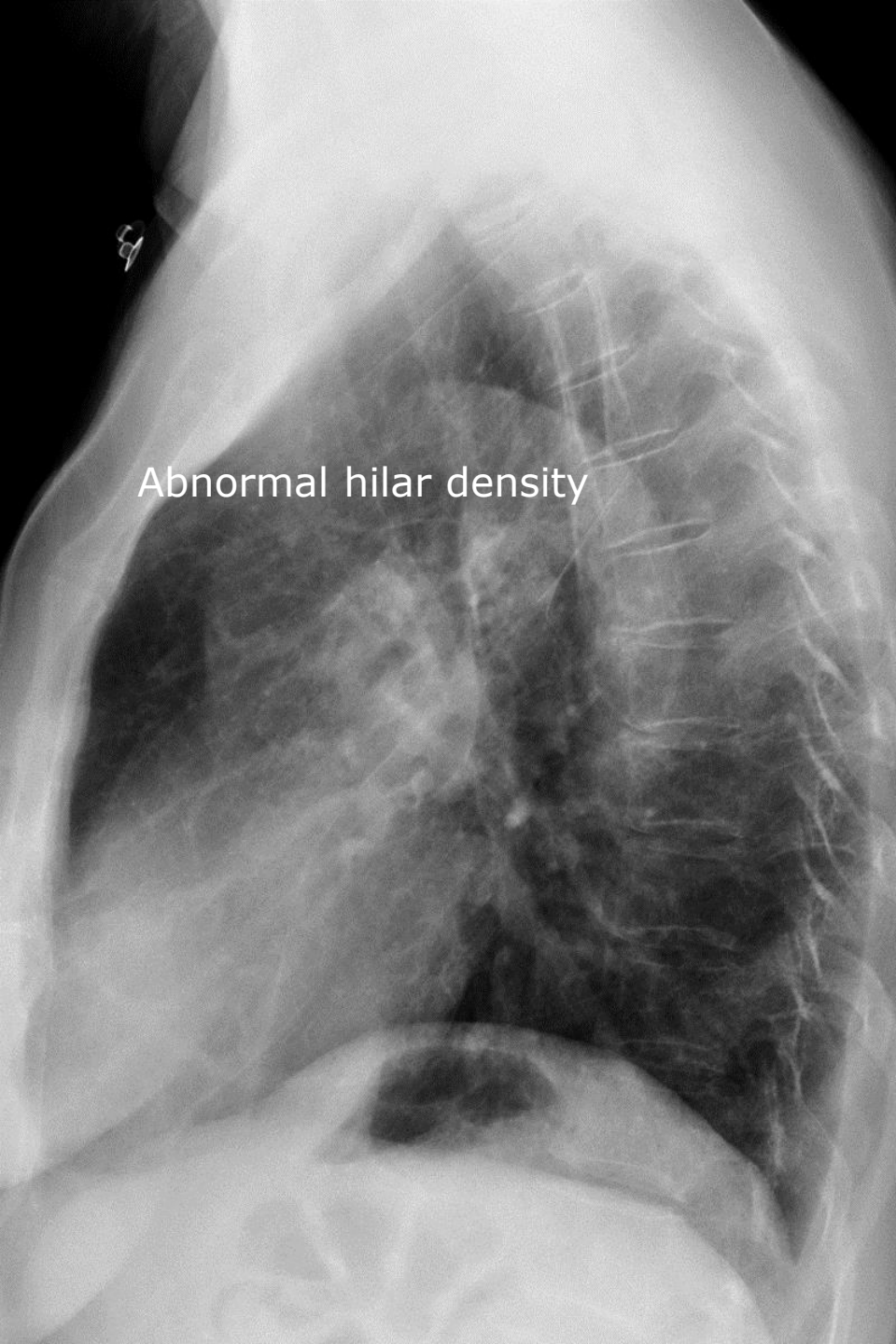
Portable

Left hilar fullness

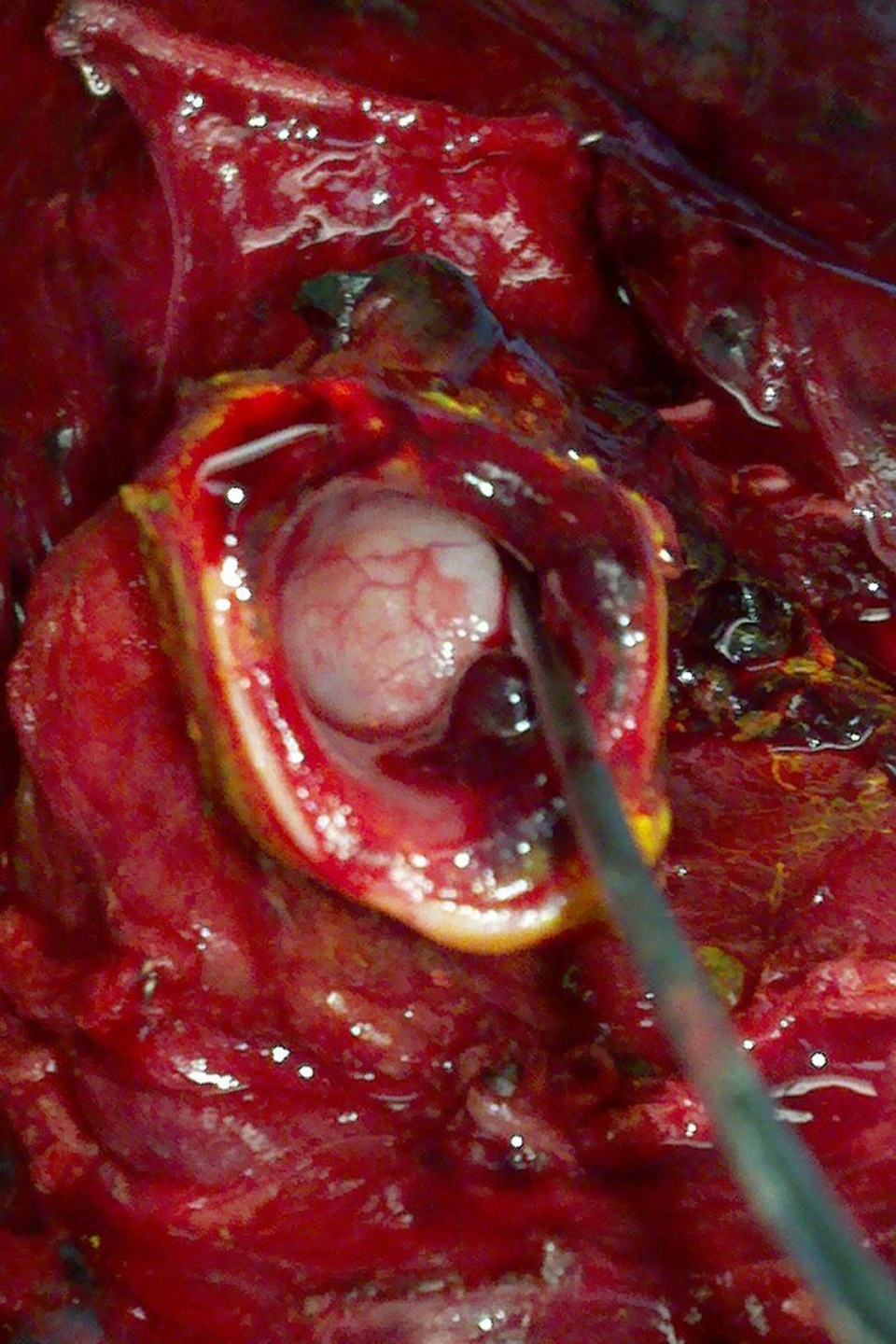




Endobronchial mass
with extension outside the
airway







Adenoid Cystic Carcinoma (left mainstem bronchus)

Kendall Martin, MD
UCLA Medical Center
Los Angeles, CA

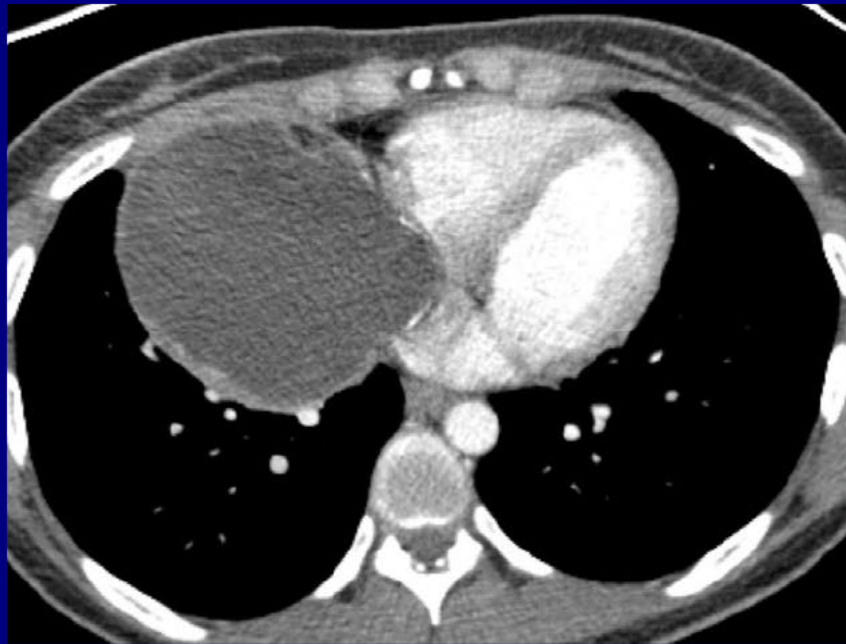
Cardiovascular Imaging



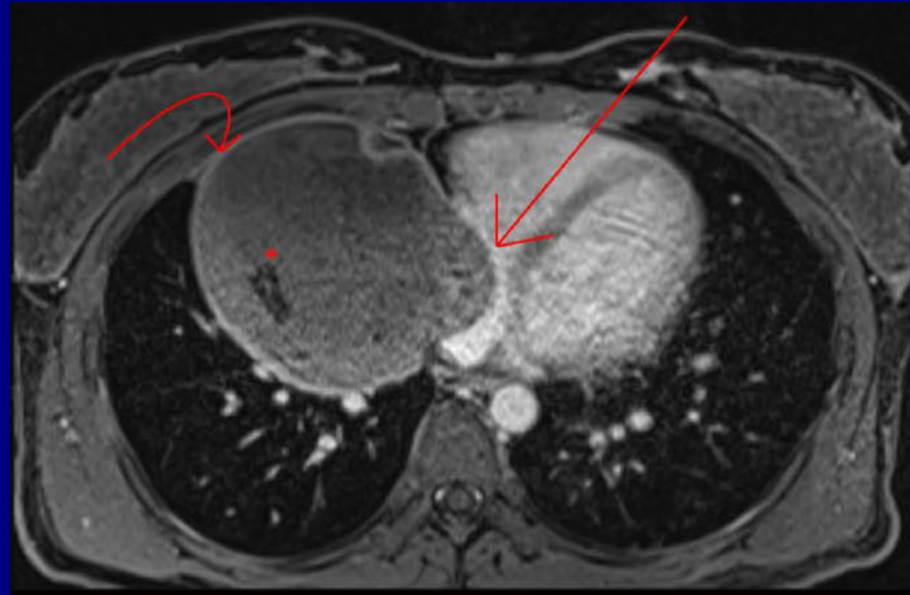
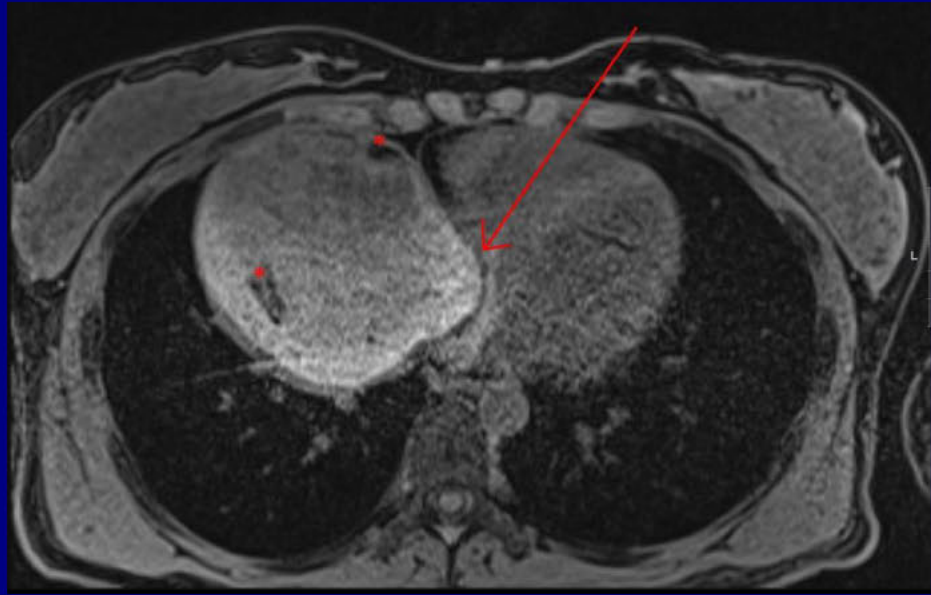
History

24 yo female with chest radiographic abnormality detected during ER work-up for a motor vehicle accident. No significant past medical history. There is a large mediastinal mass which obscures right heart border.



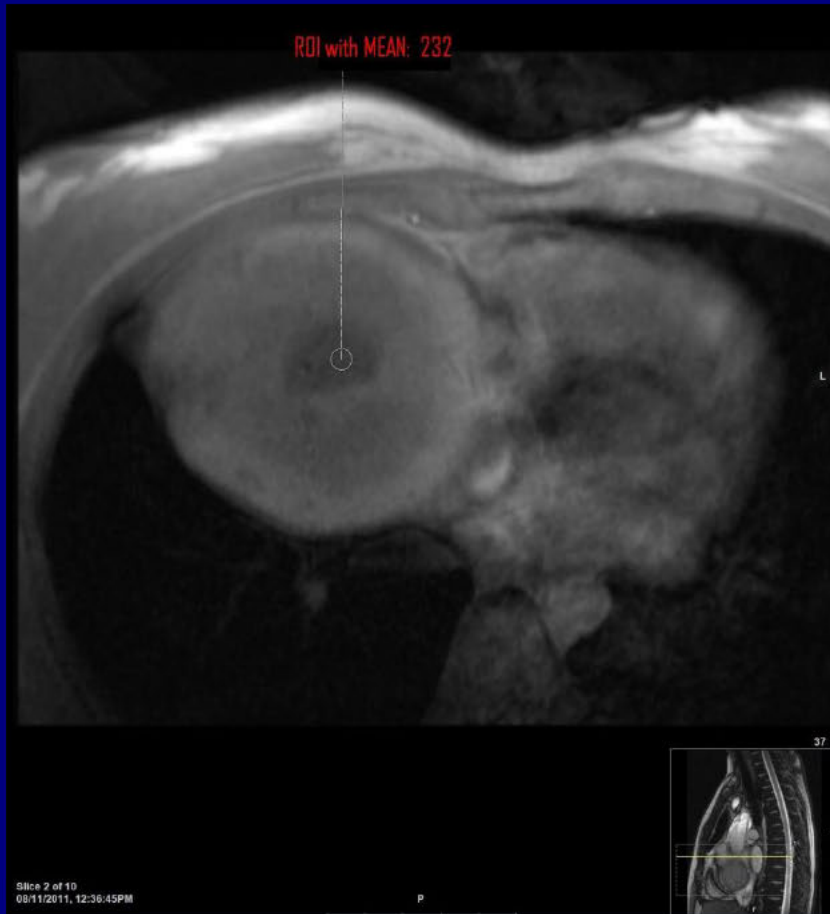


Contrast-enhanced CT images (axial and coronal) demonstrate a right-sided mediastinal mass with internal HU measuring slightly above water, compatible with proteinaceous fluid vs. hemorrhage. There are rim-like calcific densities and a small focal fat density also within this lesion.



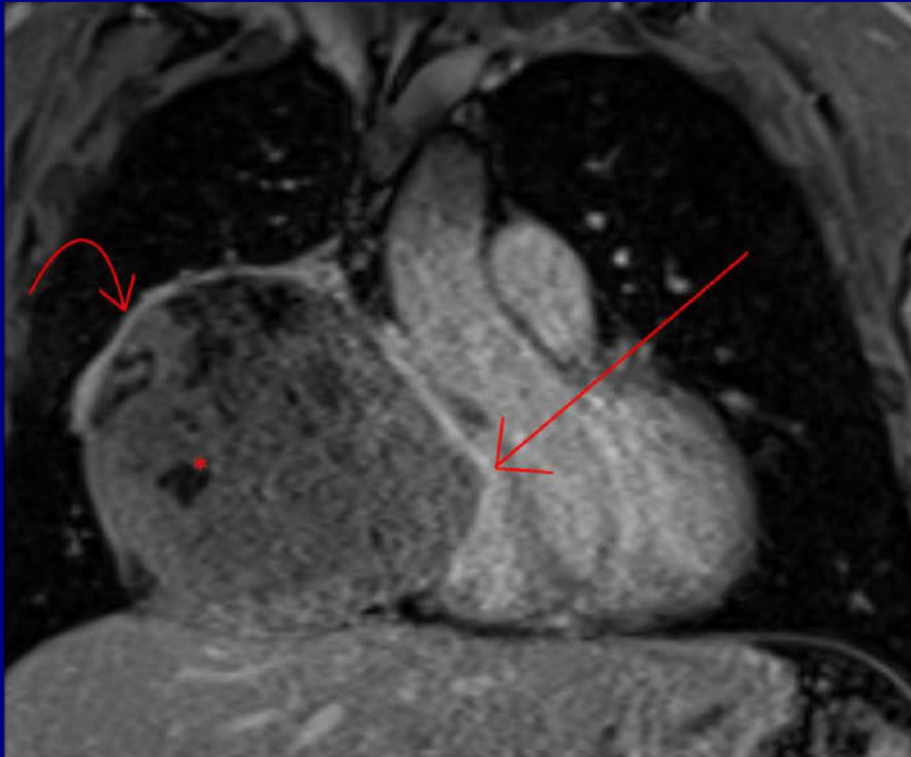
MRI T1-weighted (VIBE) pre-contrast (LEFT) shows heterogeneous internal debris of varying signal intensity (*) but largely bright, suggesting blood or proteinaceous fluid. There is mass effect on right atrium (arrow).

MRI T1-weighted (VIBE) post-contrast (RIGHT) shows only thin peripheral rim enhancement (curved arrow).

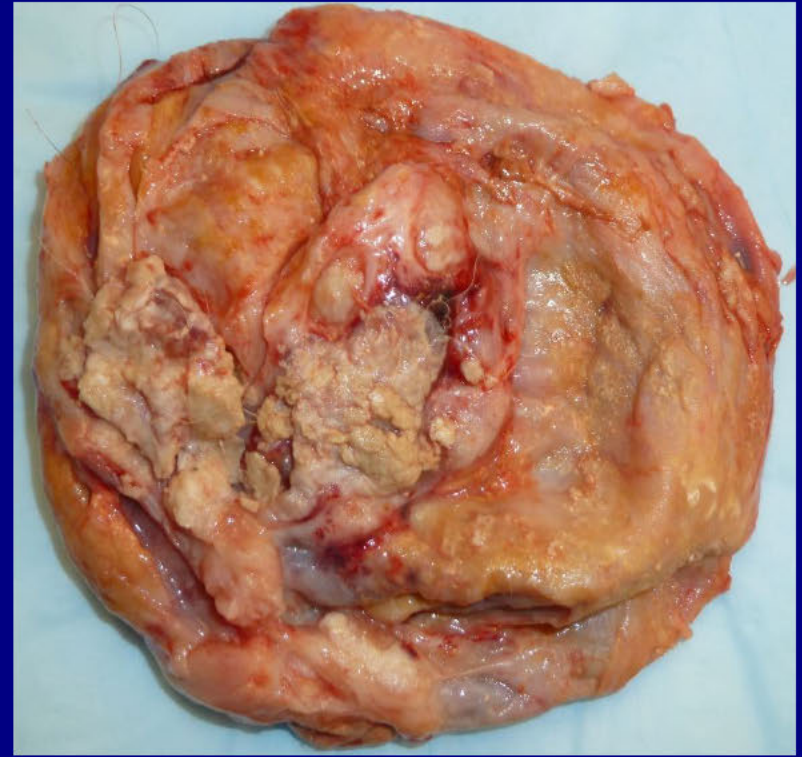


MRI In-Phase (LEFT) with ROI over fatty area.

MRI Opposed-Phase (RIGHT) with ROI over fatty area demonstrating drop in signal when compared to In-Phase imaging.



MRI T1-weighted (VIBE) post-contrast coronal image shows heterogeneous internal debris (*) with rim enhancement (curved arrow) and mass effect (arrow).



Gross resected specimen: Pericardial teratoma contains fat, calcification and hair.

Mature Cystic Teratoma of the Pericardium

Indravadan Patel, MD

University Hospitals – Case Medical Center
Cleveland, OH

Pediatric Best Case

13-year-old girl with lower
abdominal pain and fever



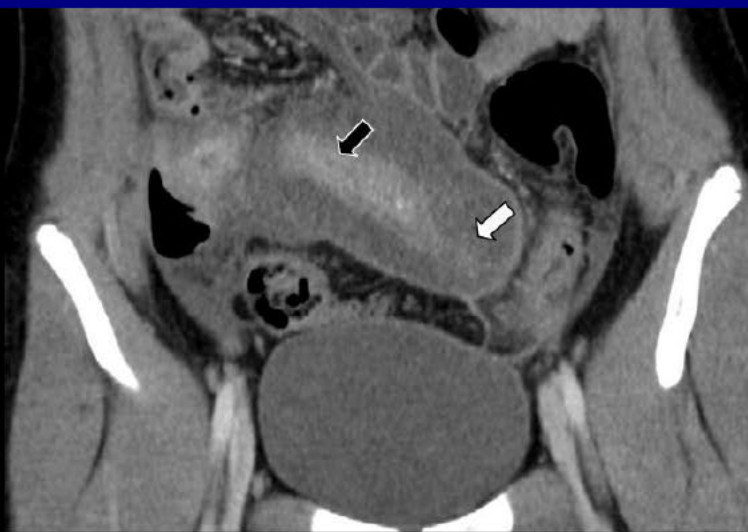
1



2

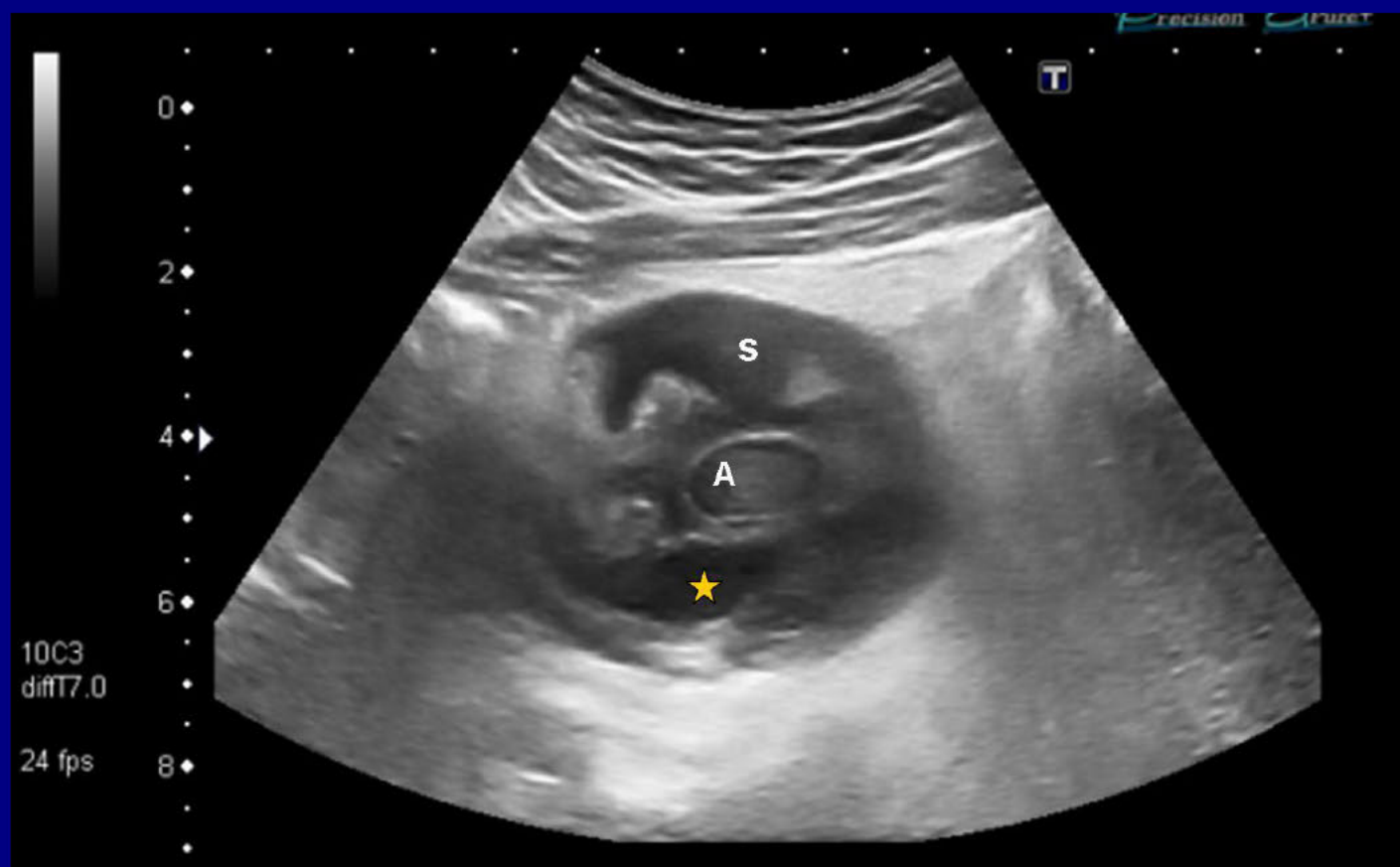


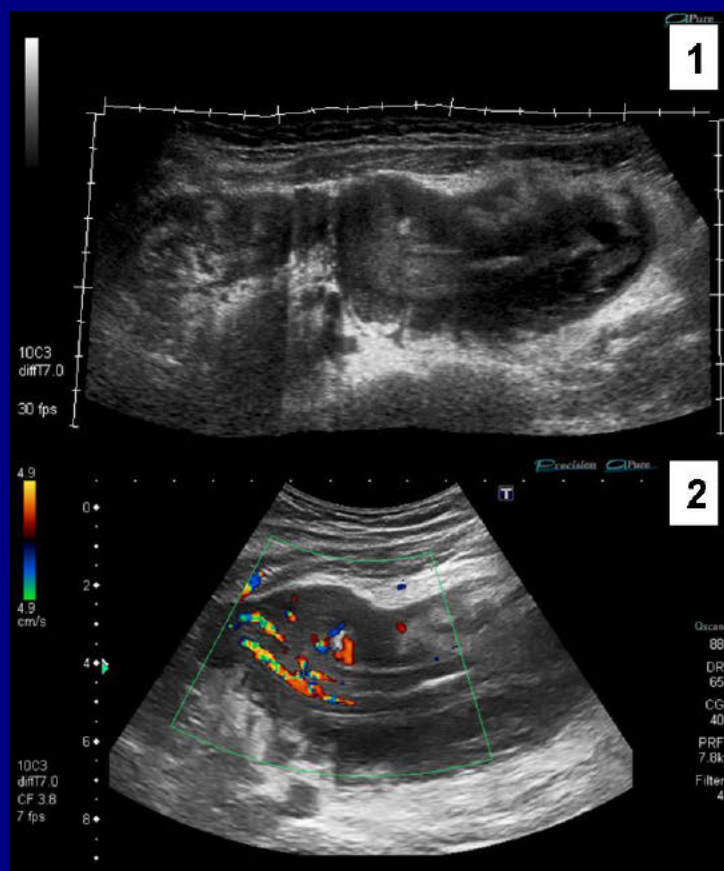
1

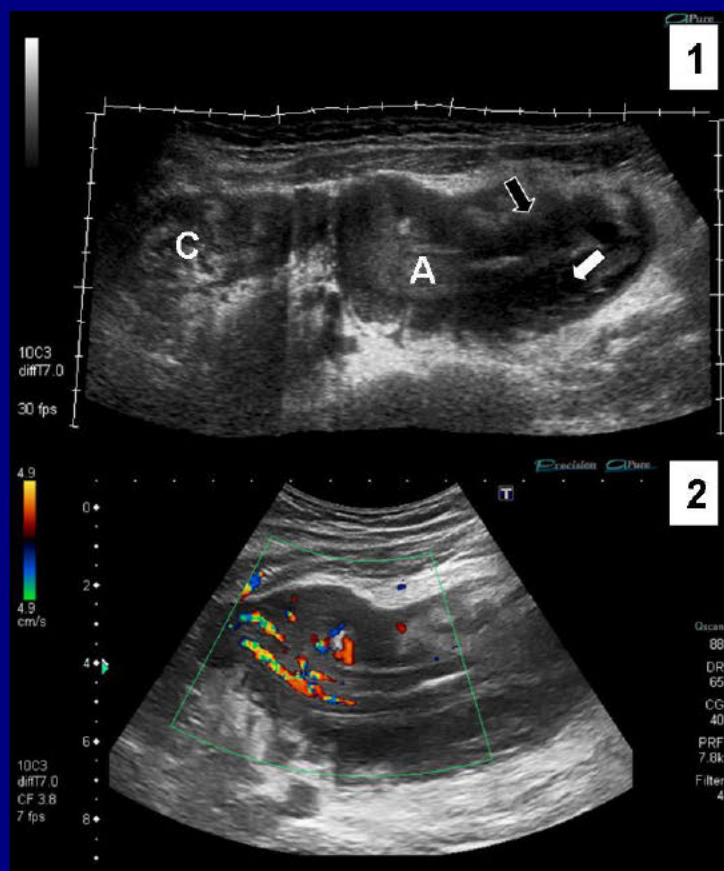


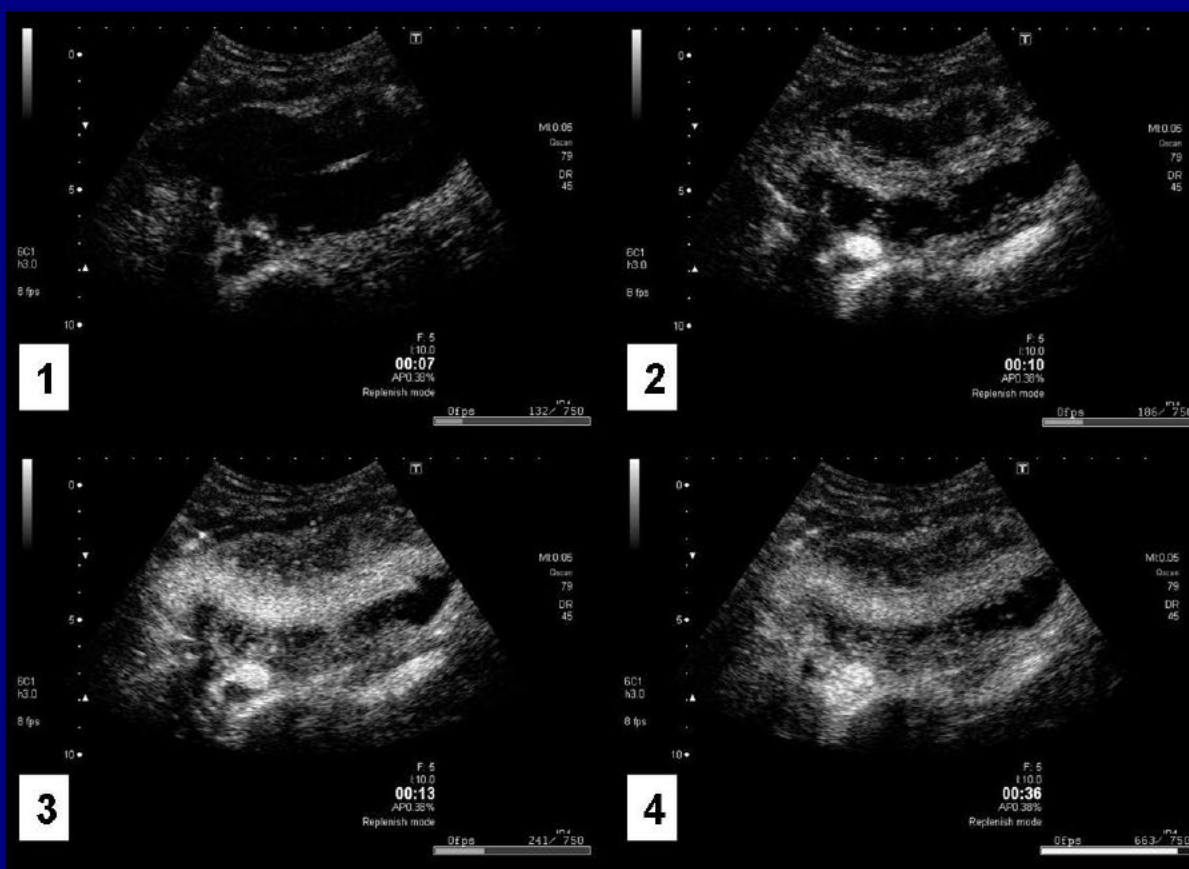
2

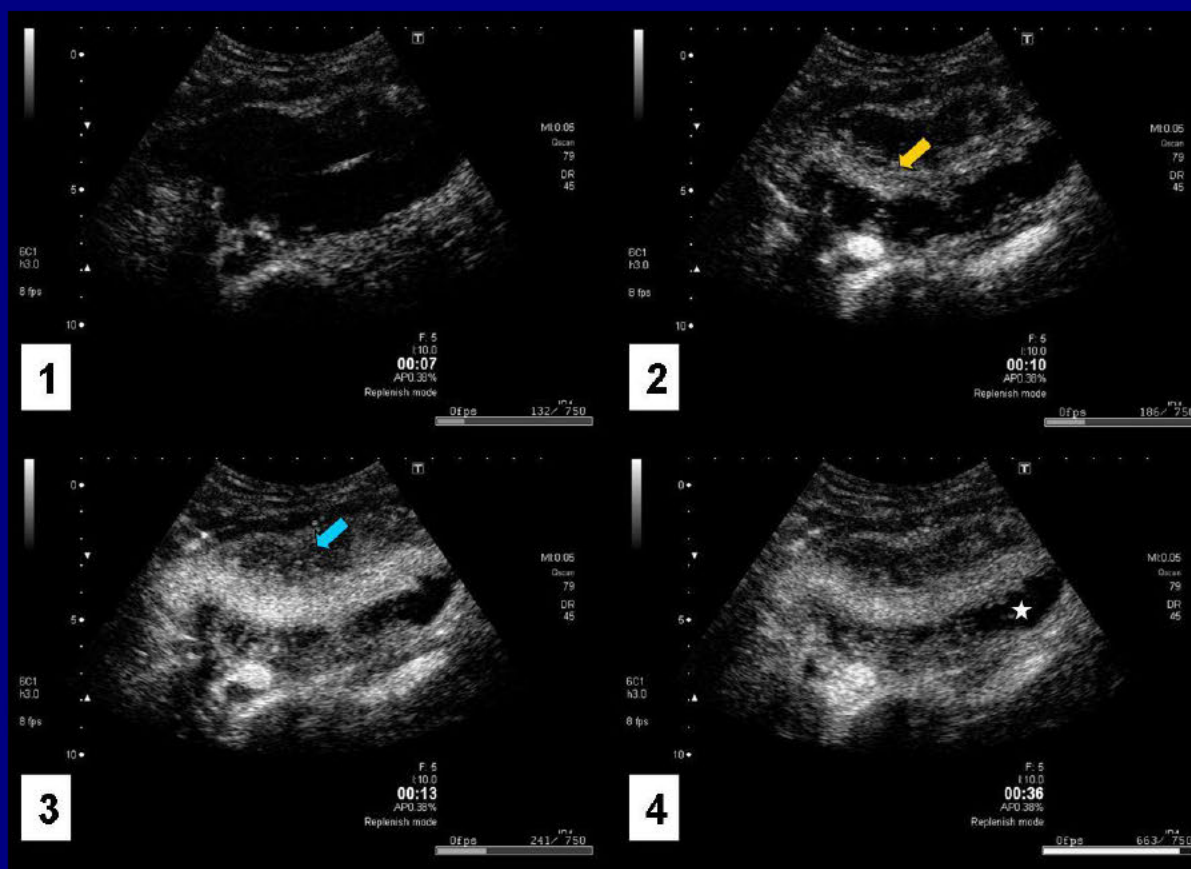


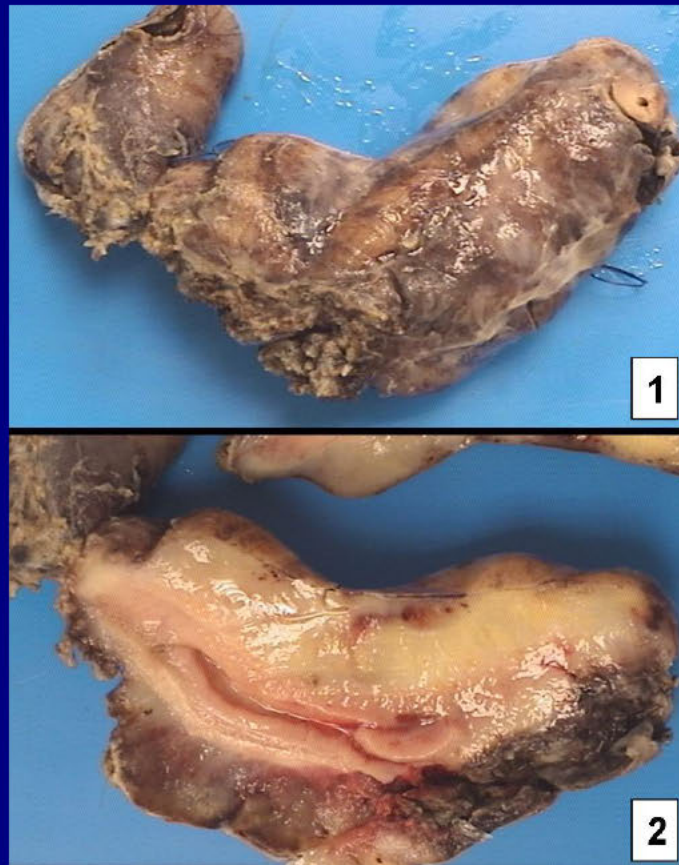


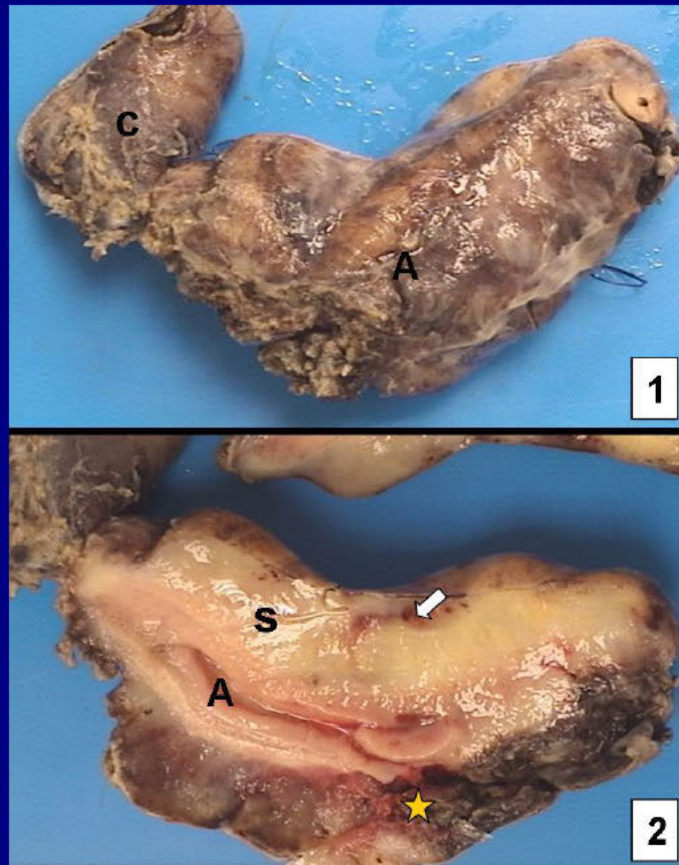


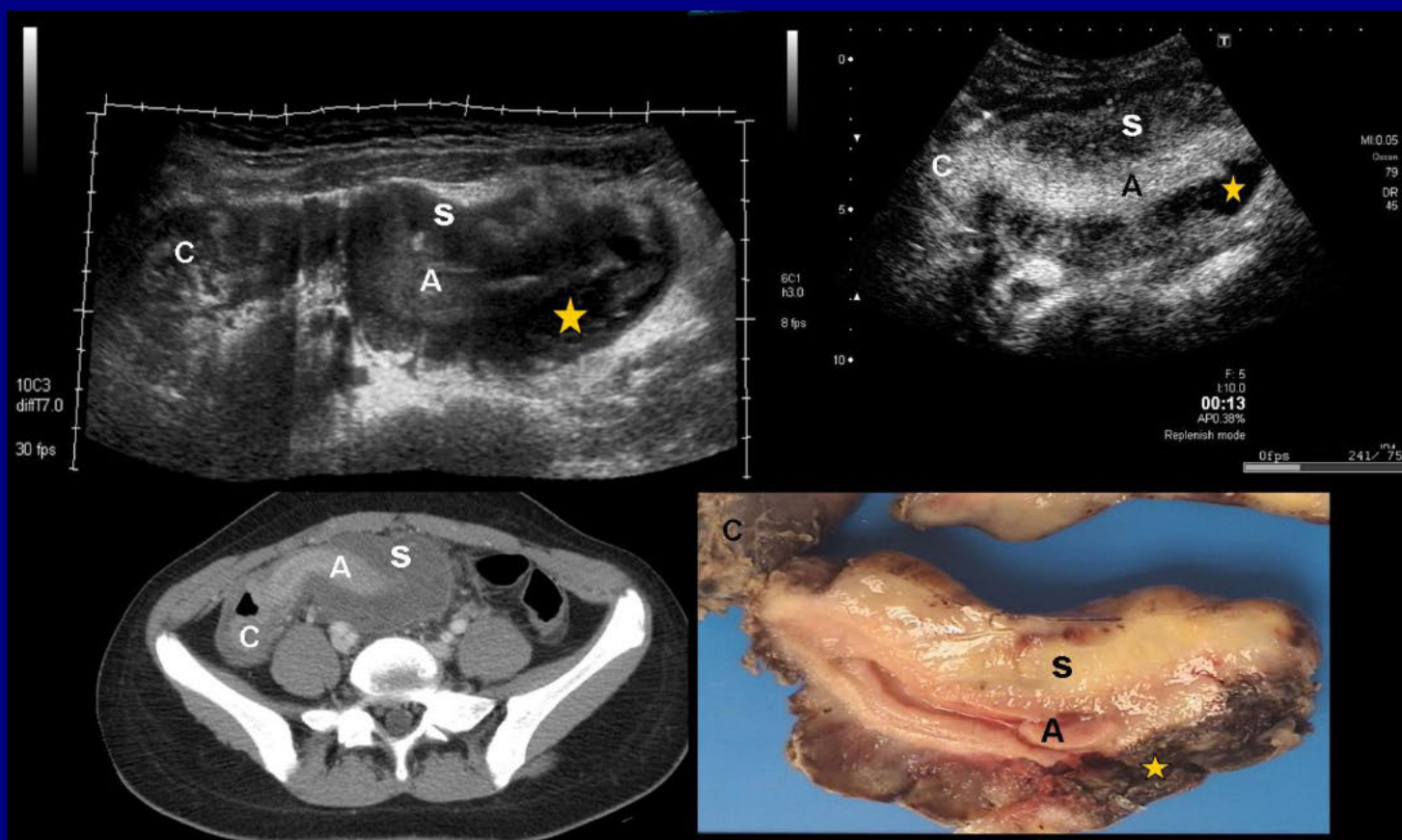












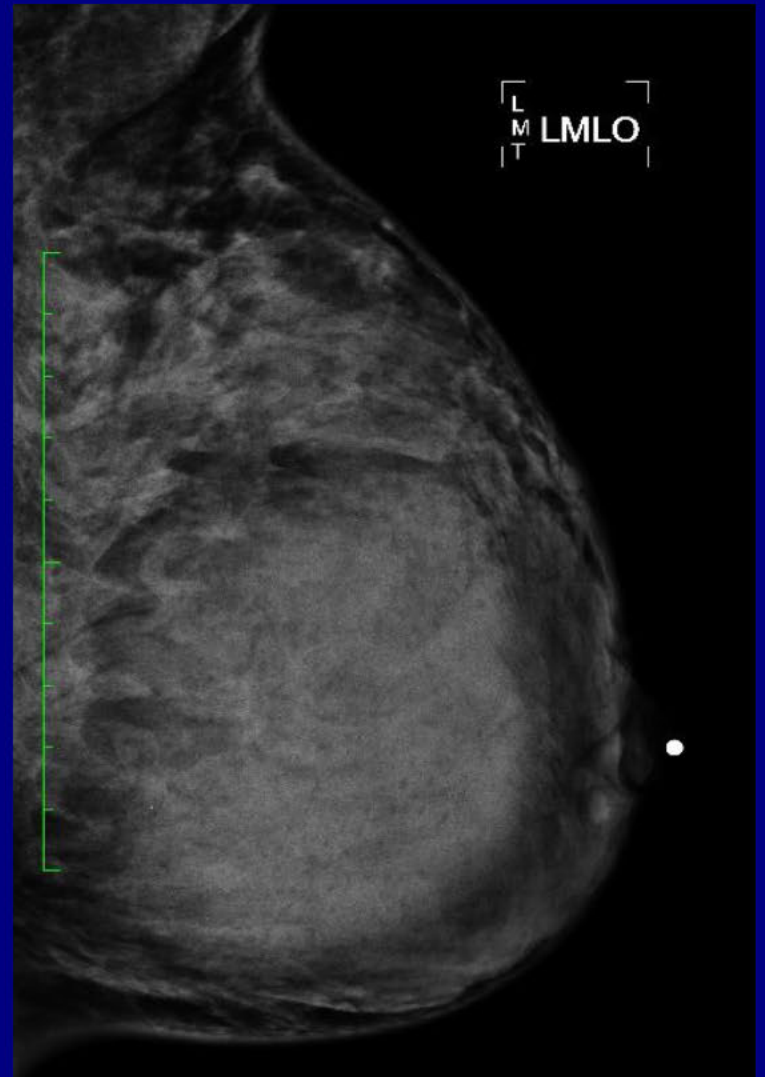
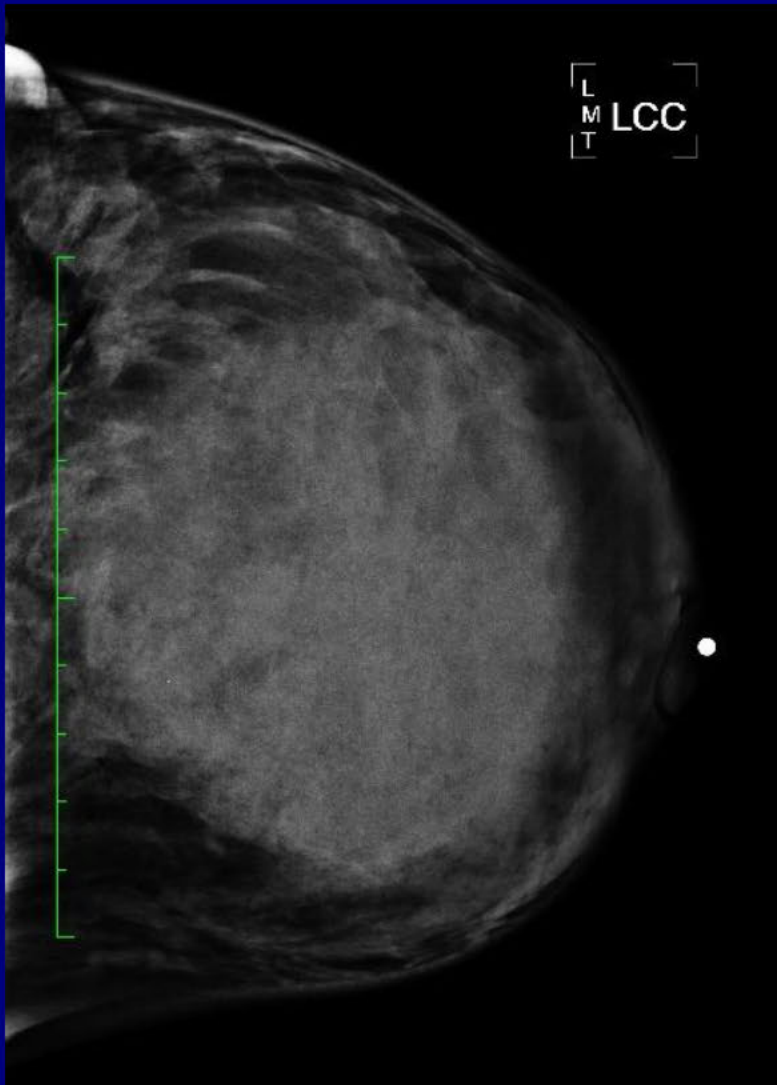
Crohn Disease of the Appendix

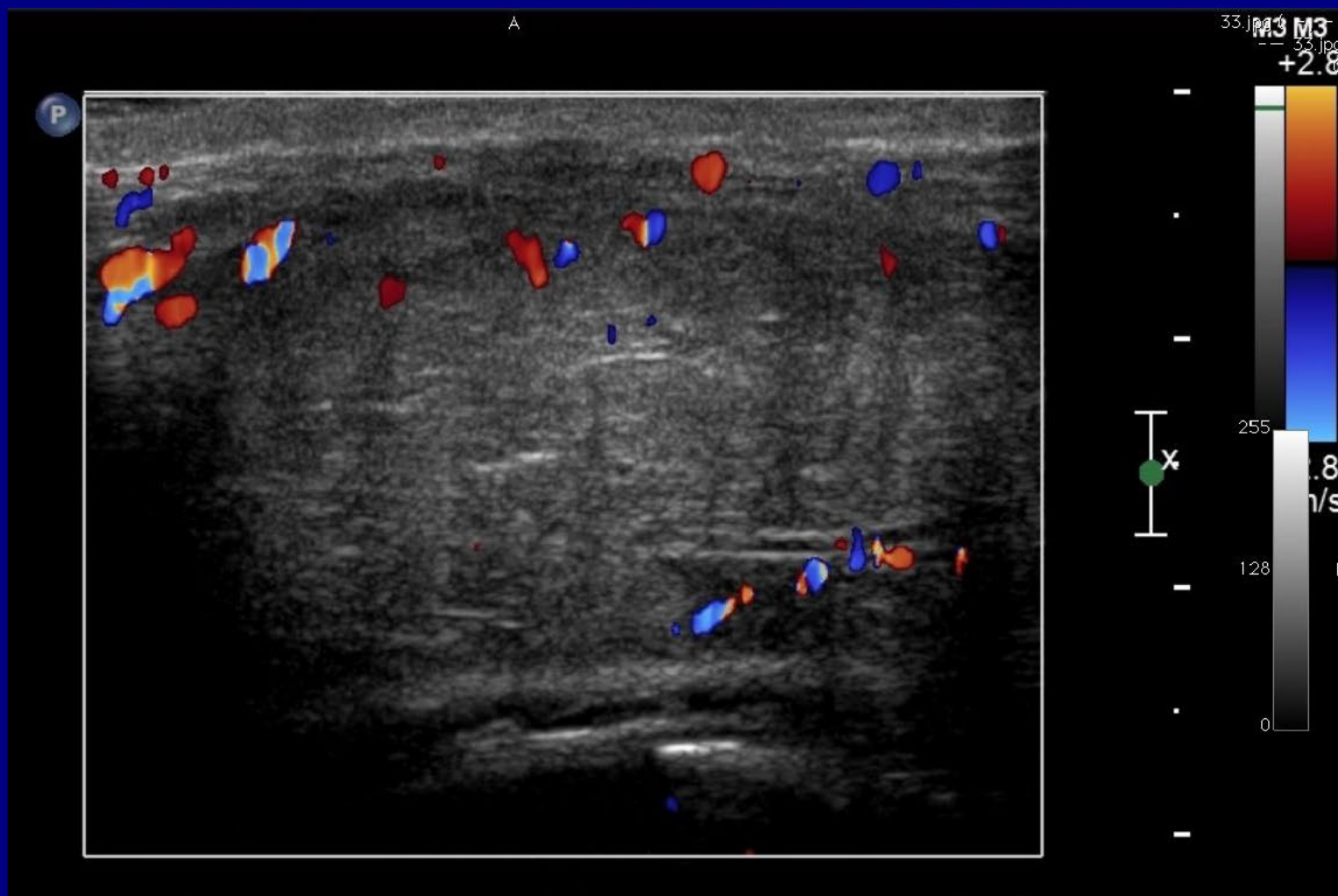
Maria Cerveron Izquierdo, MD
Hospital Universitario Doctor Peset
Valencia, Spain

Breast Best Case

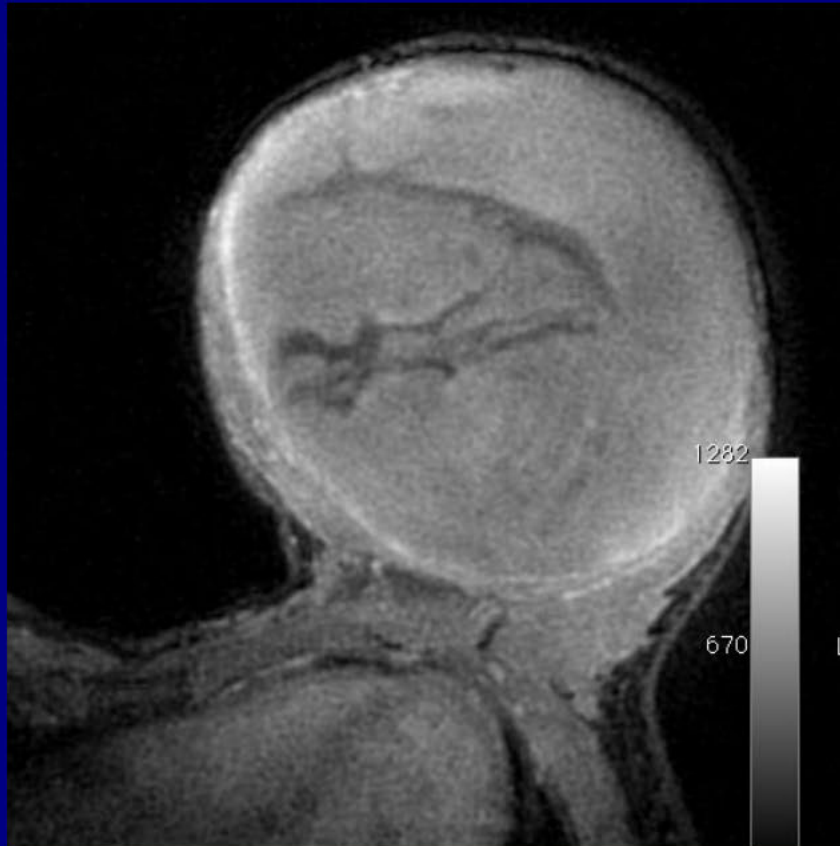
23-year-old woman had a history of 2-3 months of pain in her left breast. She developed a mass during her pregnancy.

Physical examination showed a markedly asymmetric left breast filled by a soft mass and no lymphadenopathy or skin changes.







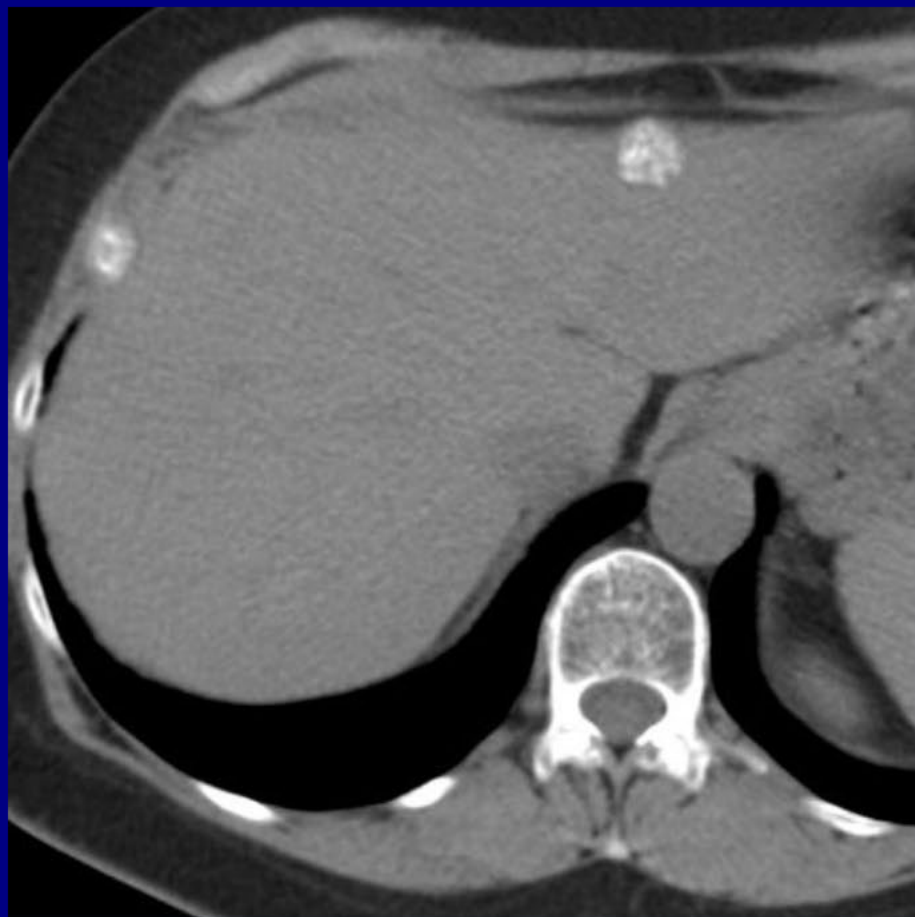


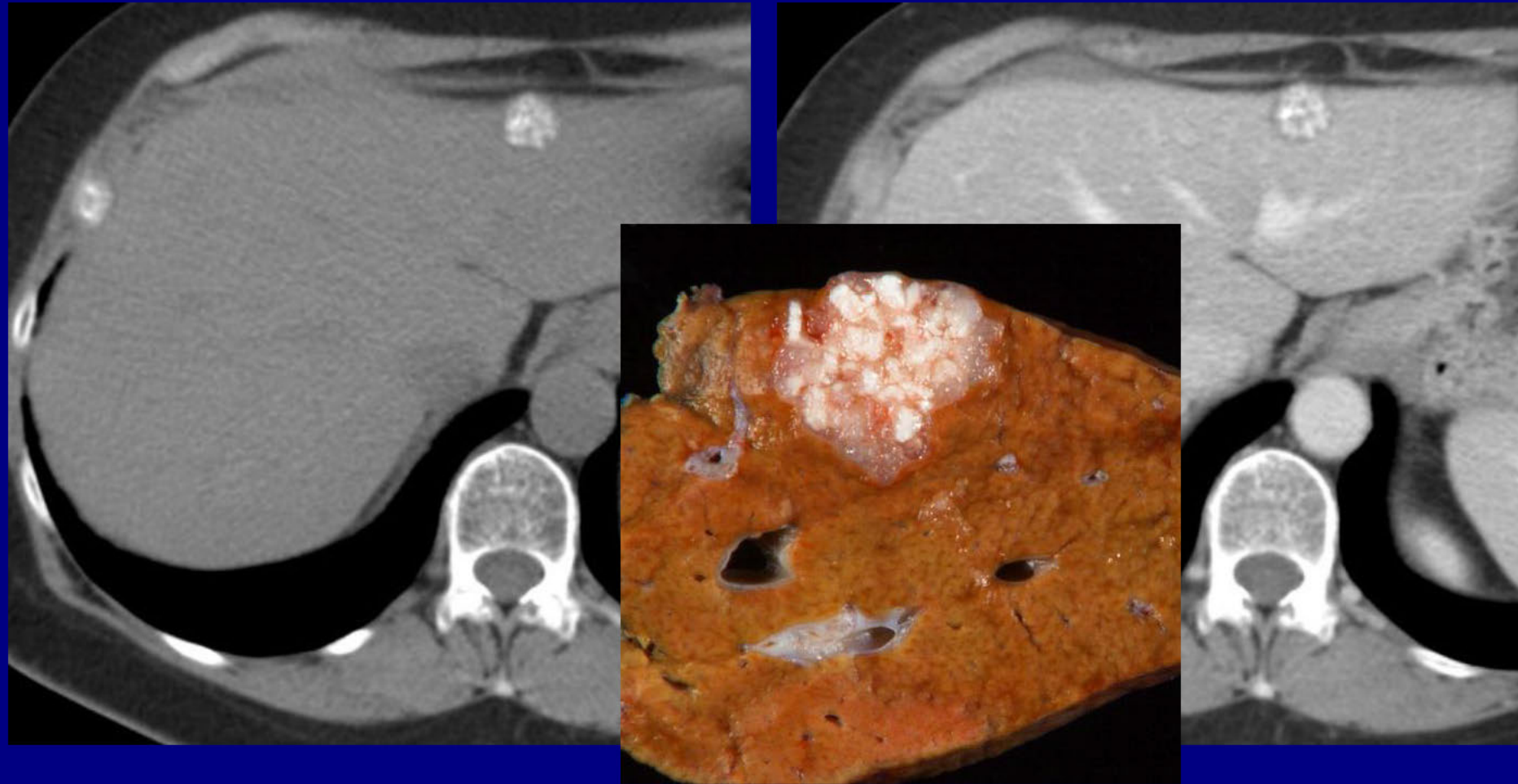
Lactating Adenoma

Allyson Parnes, MD
University of Massachusetts
Worcester, MA

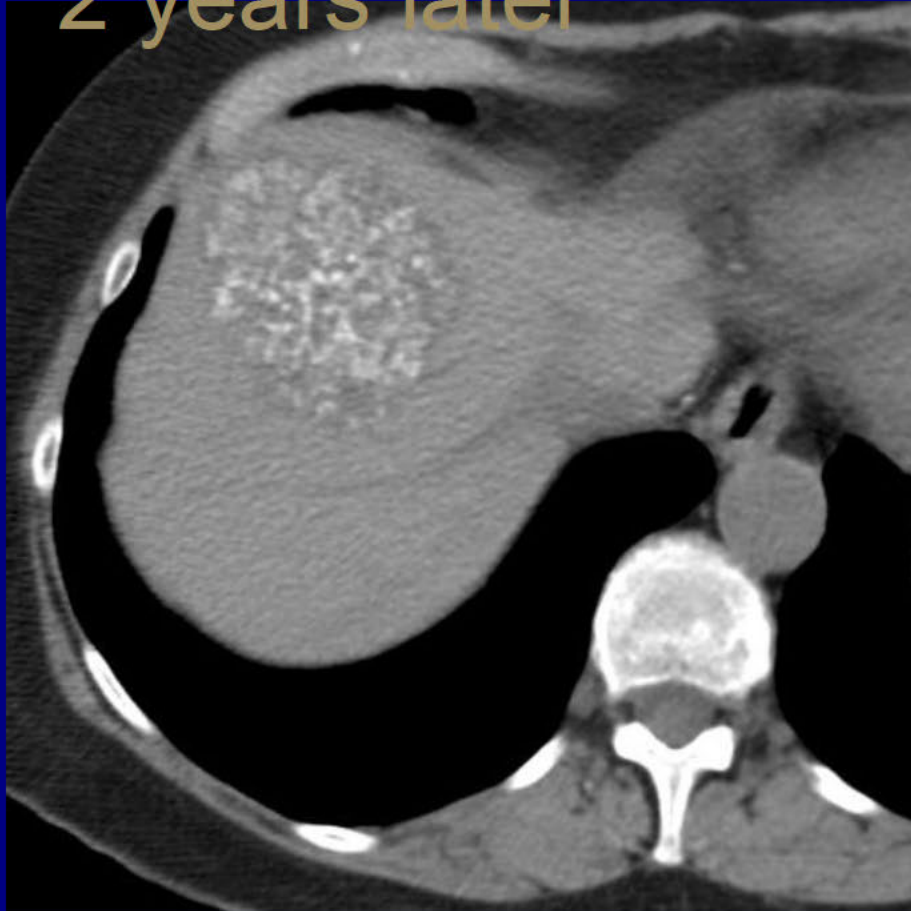
Gastrointestinal Best Case

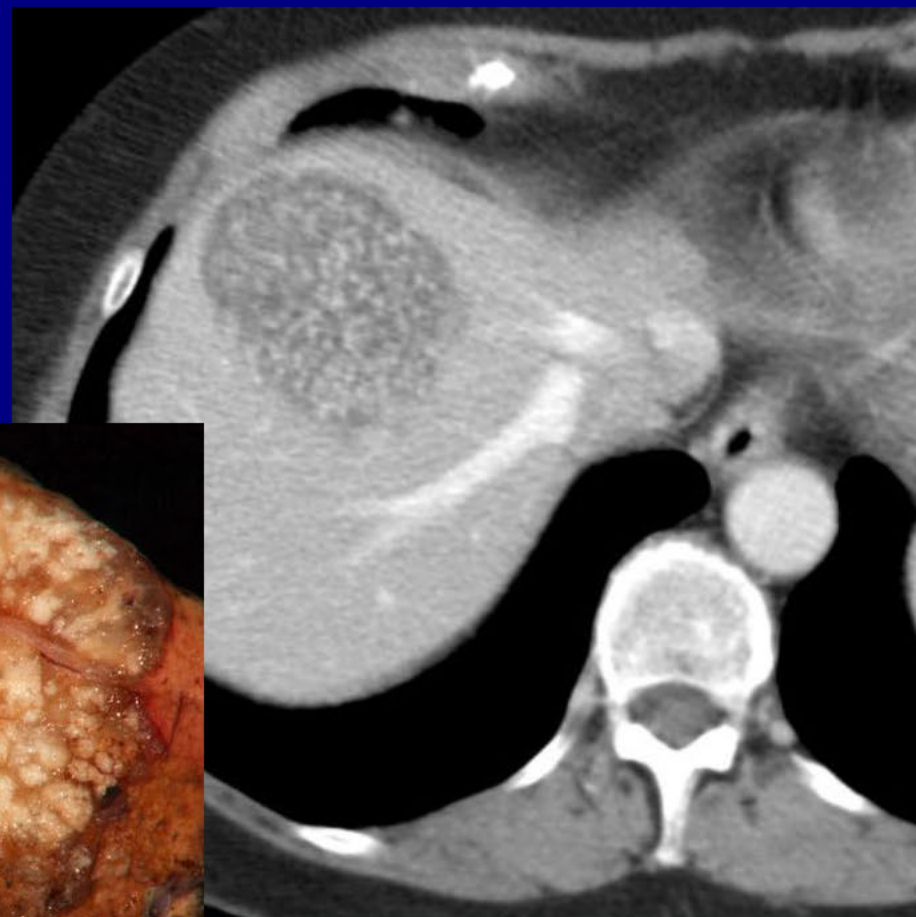
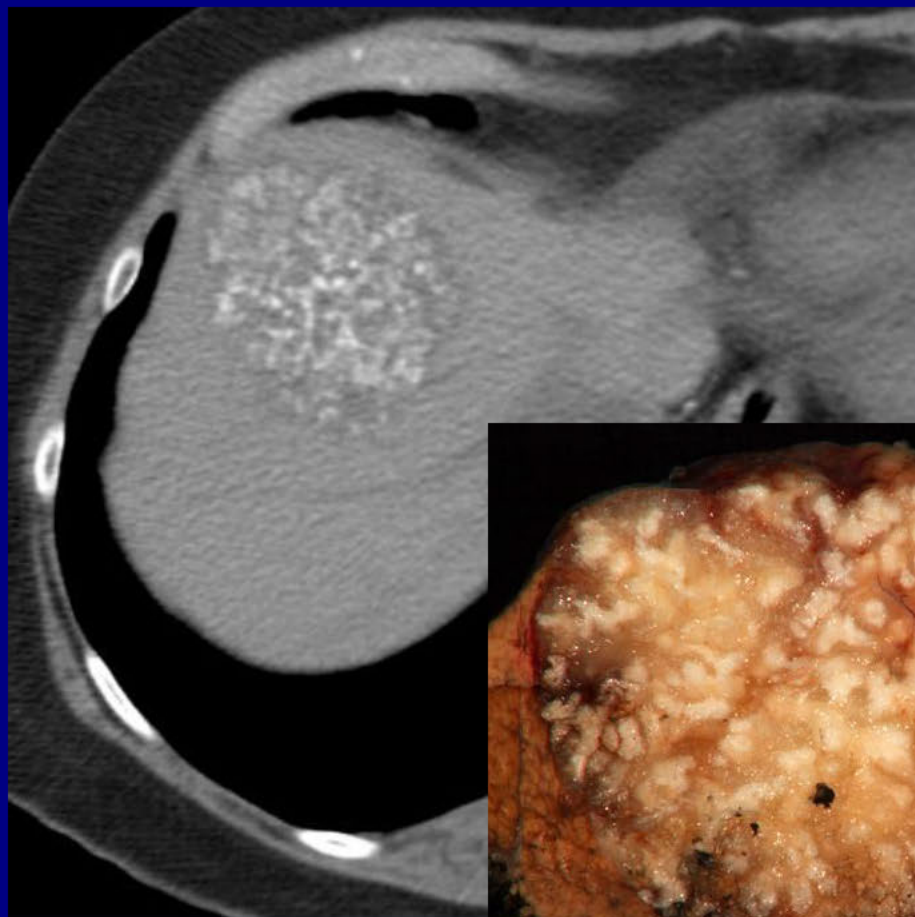
72-year-old woman with history of
colon cancer, undergoing surveillance
imaging





2 years later





Mucinous Adenocarcinoma Metastases

David Fetzer, MD
University of Pittsburgh Medical Center
Pittsburgh, PA

Many thanks to all of you for
submitting such great cases!
Have a safe trip home –

From the staff of the
American Institute for Radiologic Pathology