

Best Cases of the AIRP

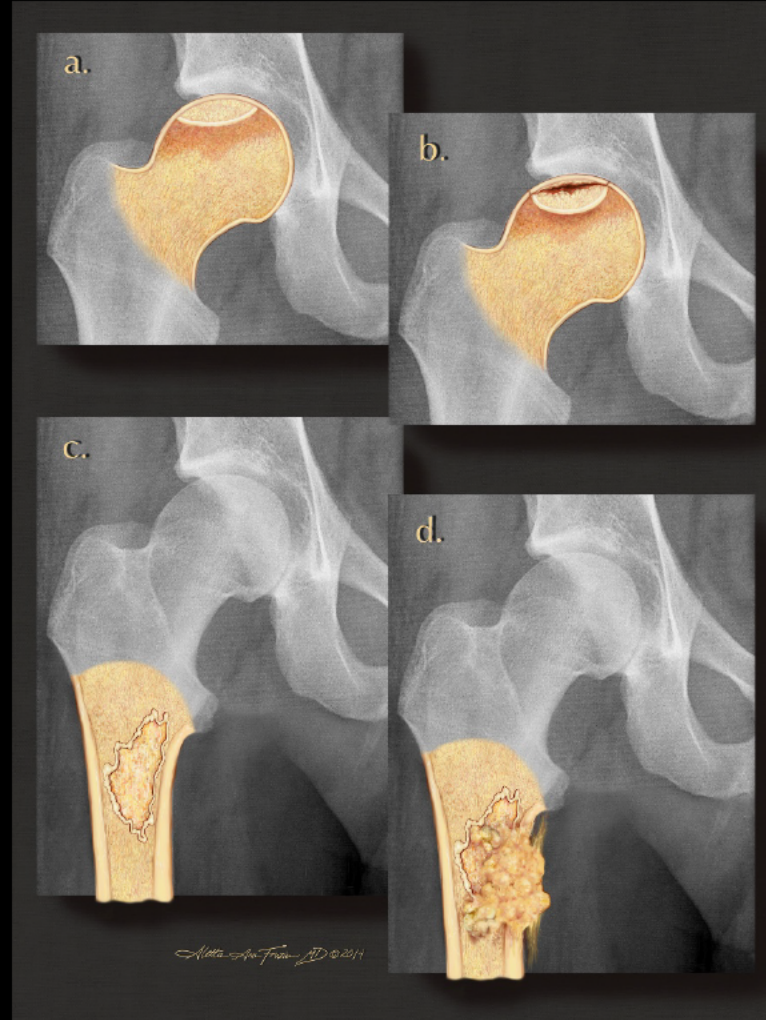
September-October, 2019

AIRPTM

AMERICAN INSTITUTE FOR
RADIOLOGIC PATHOLOGY

A PROGRAM OF THE
AMERICAN COLLEGE OF RADIOLOGY

Musculoskeletal Best Case



AIRPTM

AMERICAN INSTITUTE FOR
RADIOLOGIC PATHOLOGY

A PROGRAM OF THE
AMERICAN COLLEGE OF RADIOLOGY

Musculoskeletal Best Case September-October 2019



A PROGRAM OF THE
AMERICAN COLLEGE OF RADIOLOGY

CLINICAL INFORMATION

37-year-old female with leg pain and palpable mass



AMERICAN INSTITUTE FOR
RADIOLOGIC PATHOLOGY

A PROGRAM OF THE
AMERICAN COLLEGE OF RADIOLOGY

AIRPTM

AMERICAN INSTITUTE FOR
RADIOLOGIC PATHOLOGY

A PROGRAM OF THE
AMERICAN COLLEGE OF RADIOLOGY



AIRPTM

AMERICAN INSTITUTE FOR
RADIOLOGIC PATHOLOGY

A PROGRAM OF THE
AMERICAN COLLEGE OF RADIOLOGY

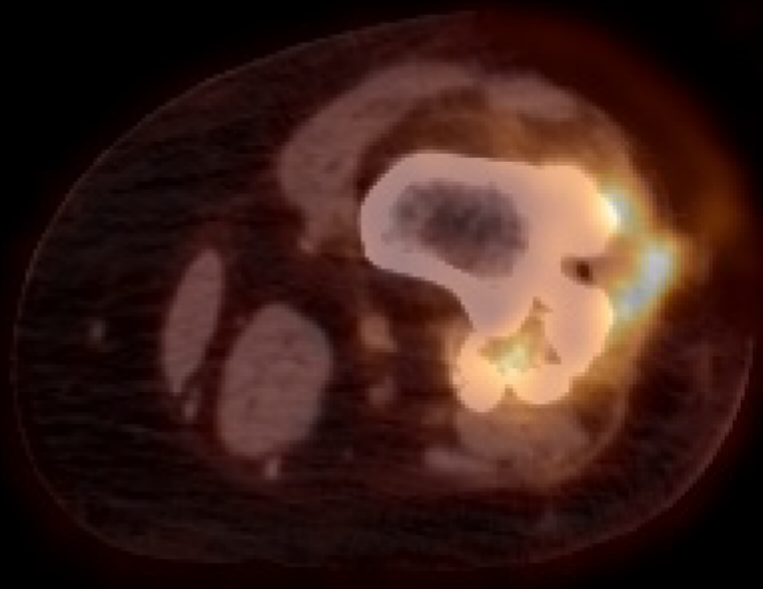


AIRP™

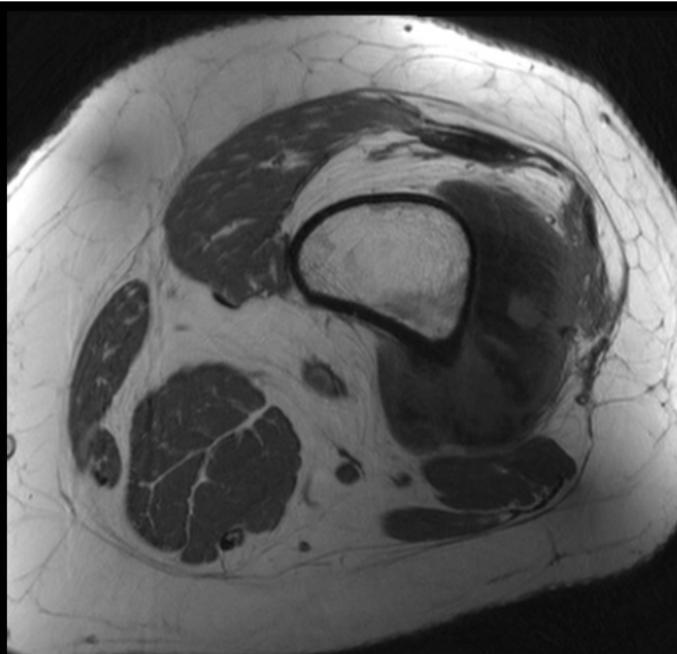
AMERICAN INSTITUTE FOR
RADIOLOGIC PATHOLOGY

A PROGRAM OF THE
AMERICAN COLLEGE OF RADIOLOGY

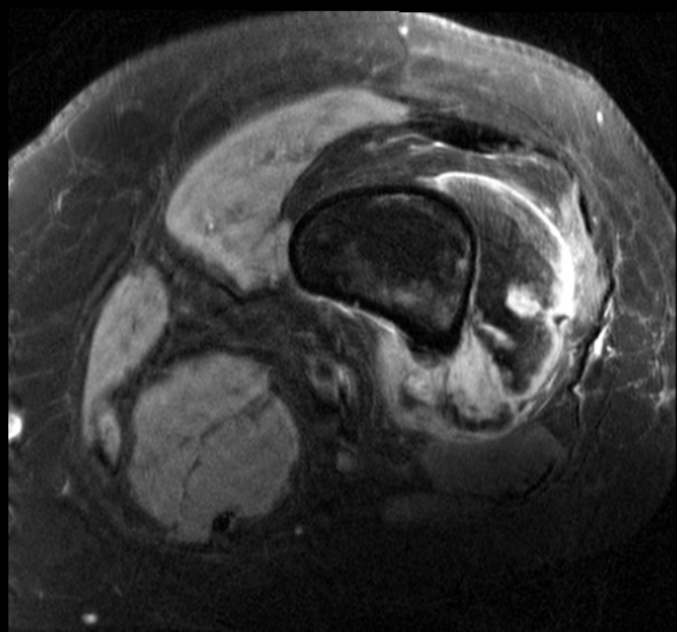




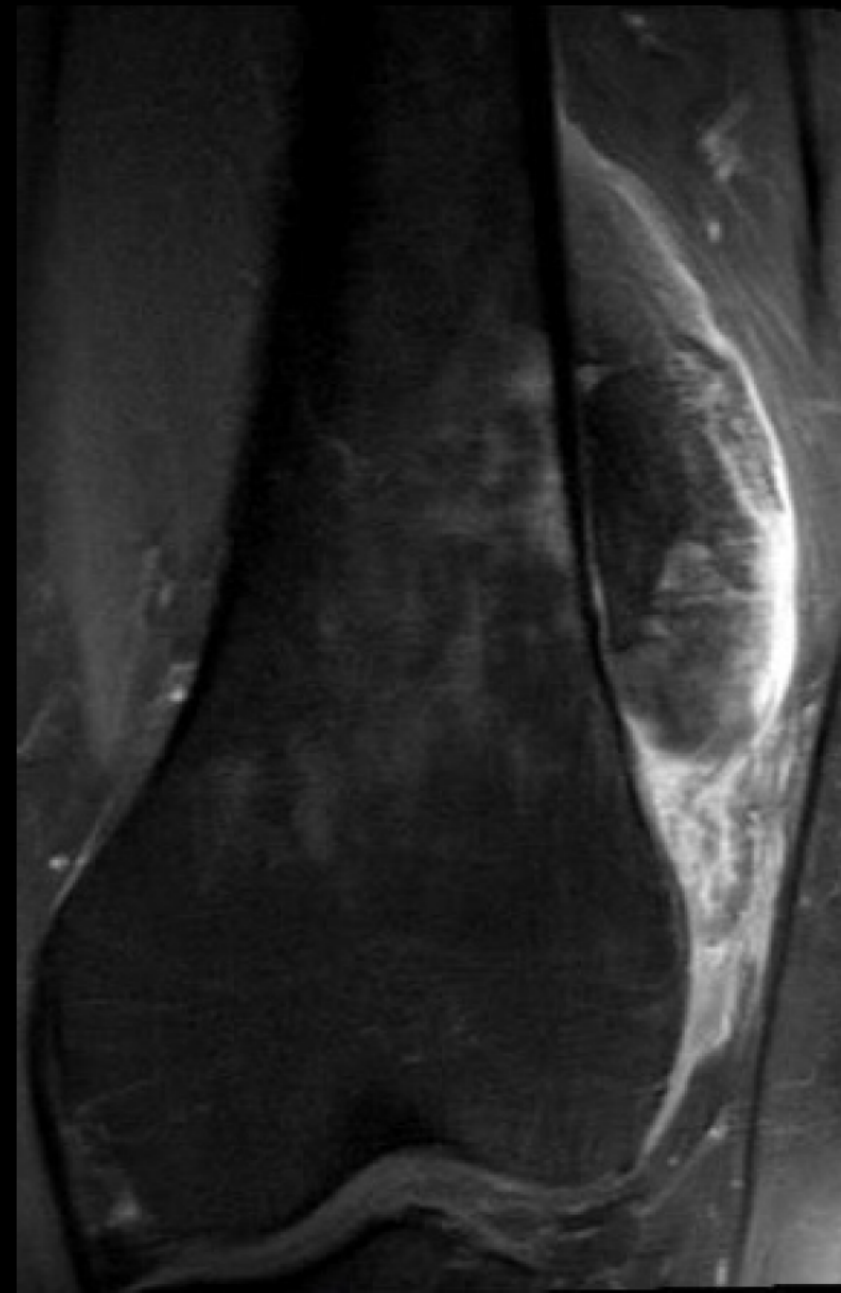
FDG-PET



Axial T1



Axial STIR

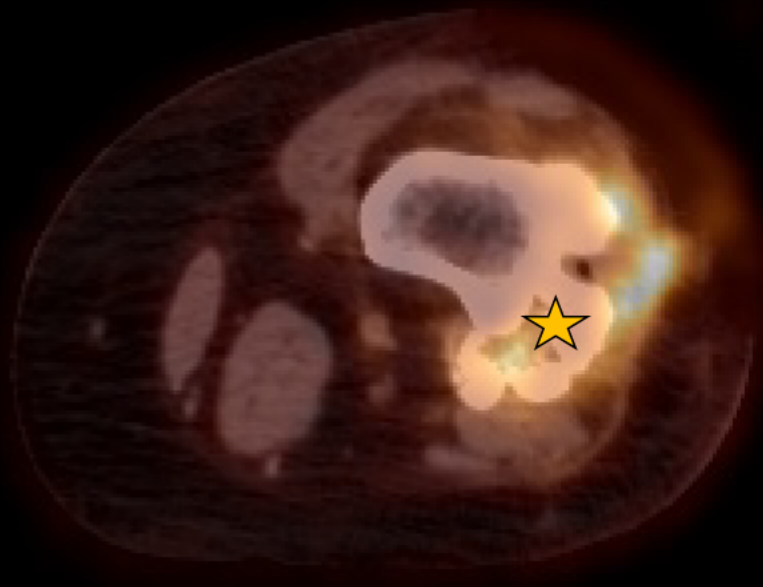


Coronal T1 FS +C

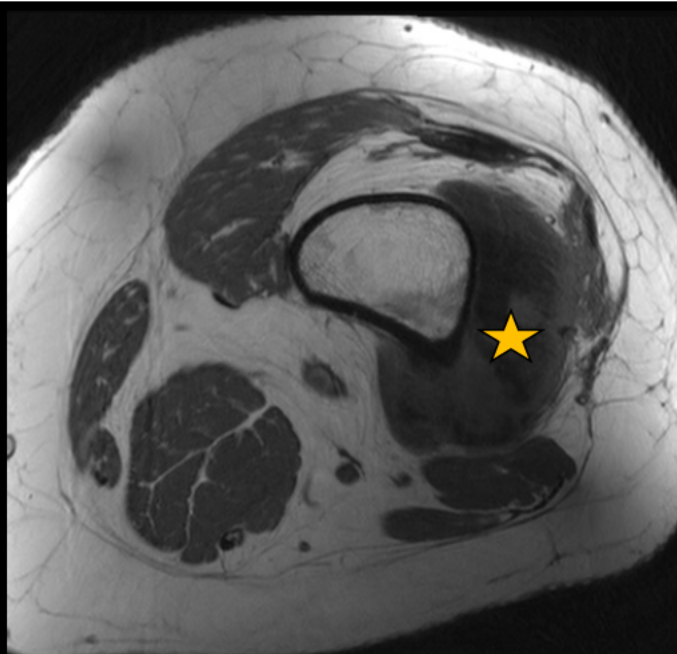
AIRPTM

AMERICAN INSTITUTE FOR
RADIOLOGIC PATHOLOGY

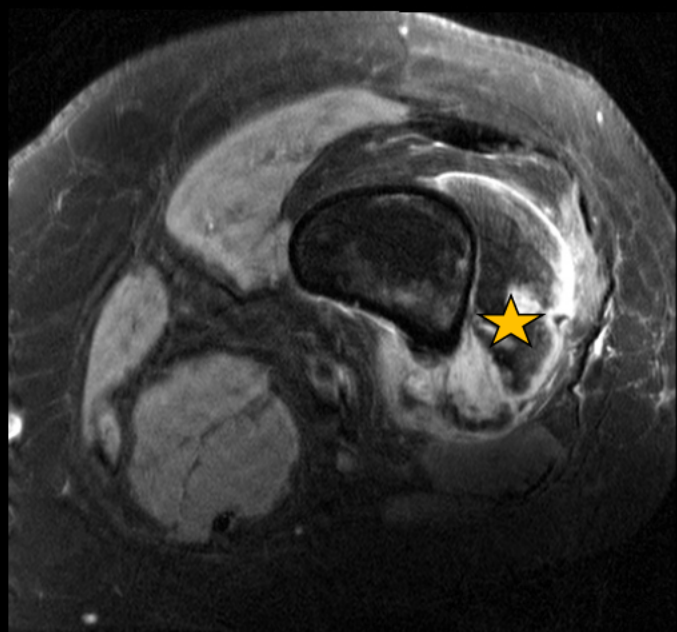
A PROGRAM OF THE
AMERICAN COLLEGE OF RADIOLOGY



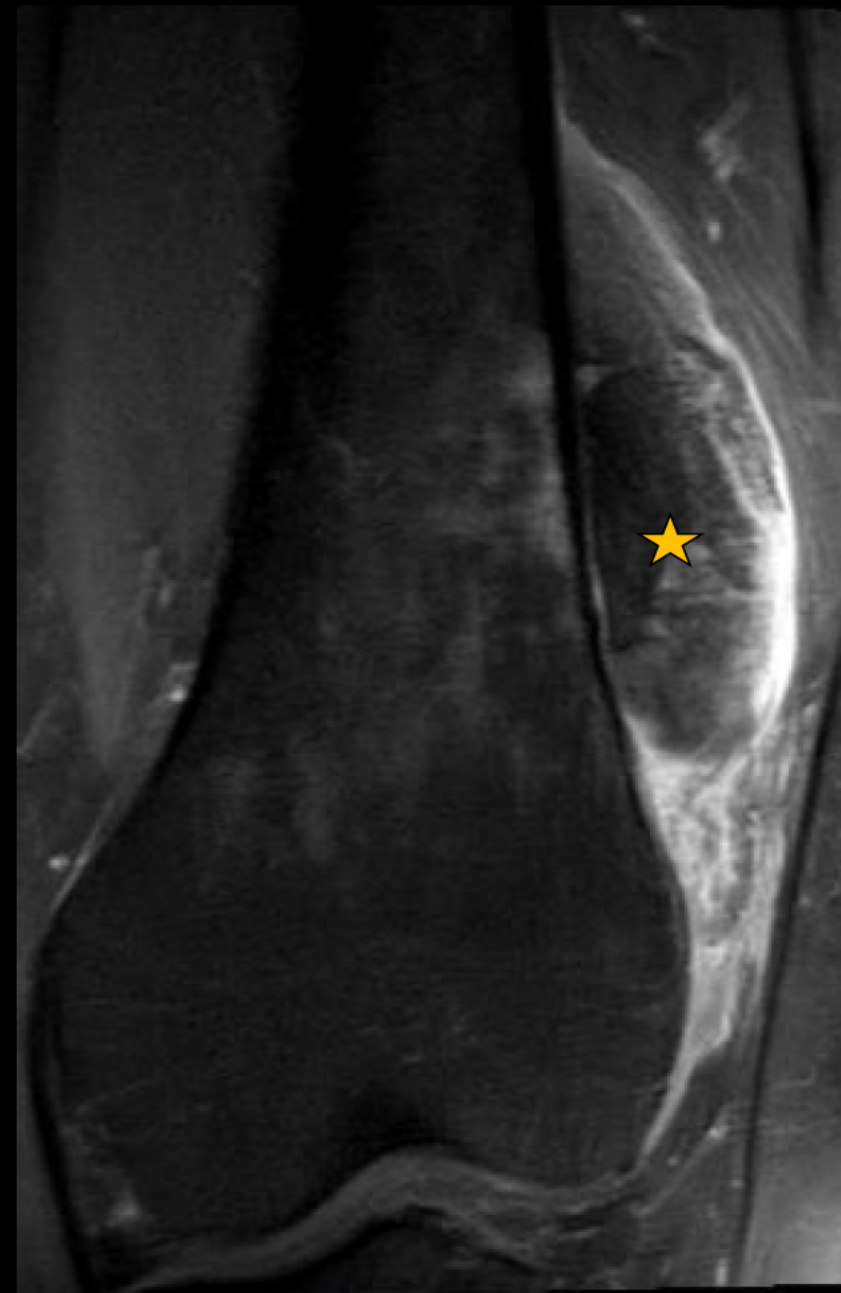
FDG-PET



Axial T1



Axial STIR

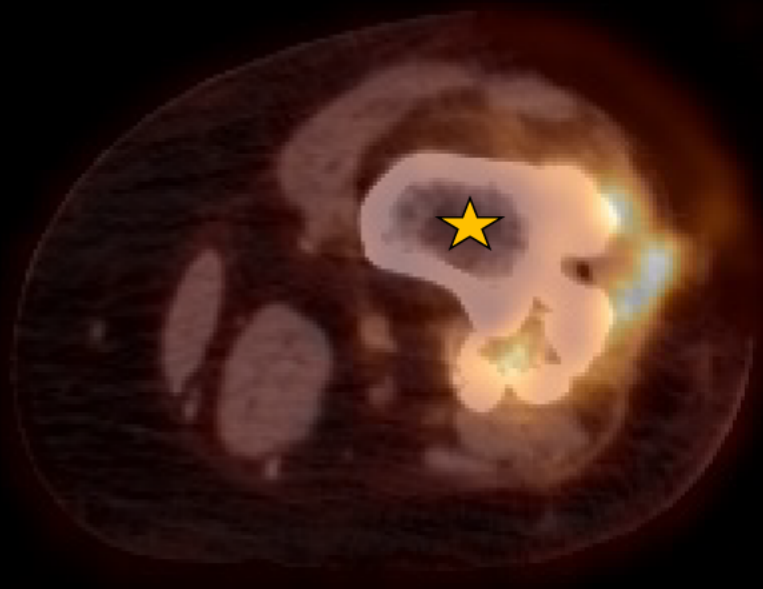


Coronal T1 FS +C

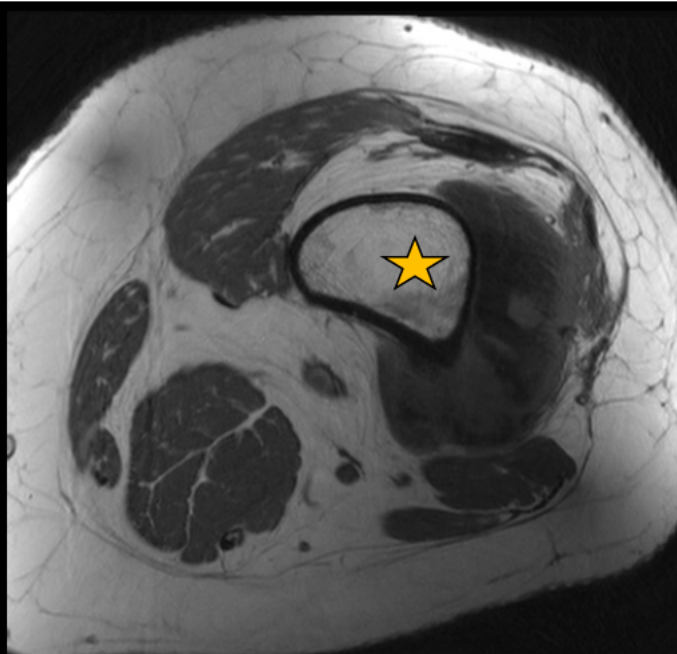
AIRPTM

AMERICAN INSTITUTE FOR
RADIOLOGIC PATHOLOGY

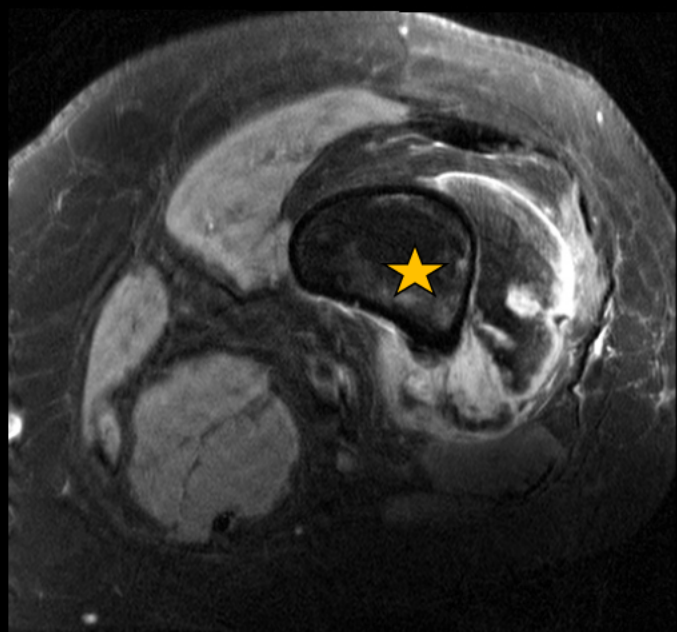
A PROGRAM OF THE
AMERICAN COLLEGE OF RADIOLOGY



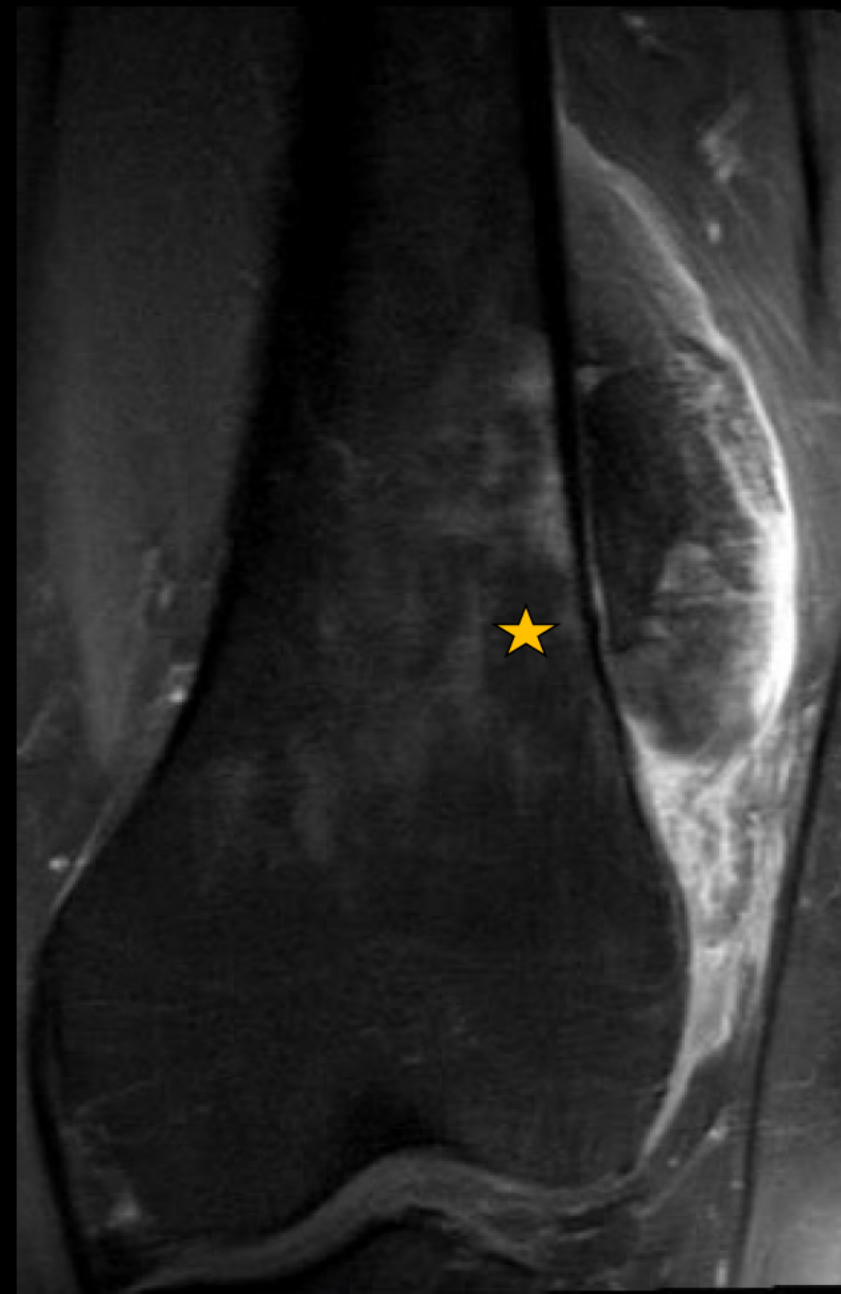
FDG-PET



Axial T1



Axial STIR



Coronal T1 FS +C

AIRPTM

AMERICAN INSTITUTE FOR
RADIOLOGIC PATHOLOGY

A PROGRAM OF THE
AMERICAN COLLEGE OF RADIOLOGY

AIRPTM

AMERICAN INSTITUTE FOR
RADIOLOGIC PATHOLOGY

A PROGRAM OF THE
AMERICAN COLLEGE OF RADIOLOG

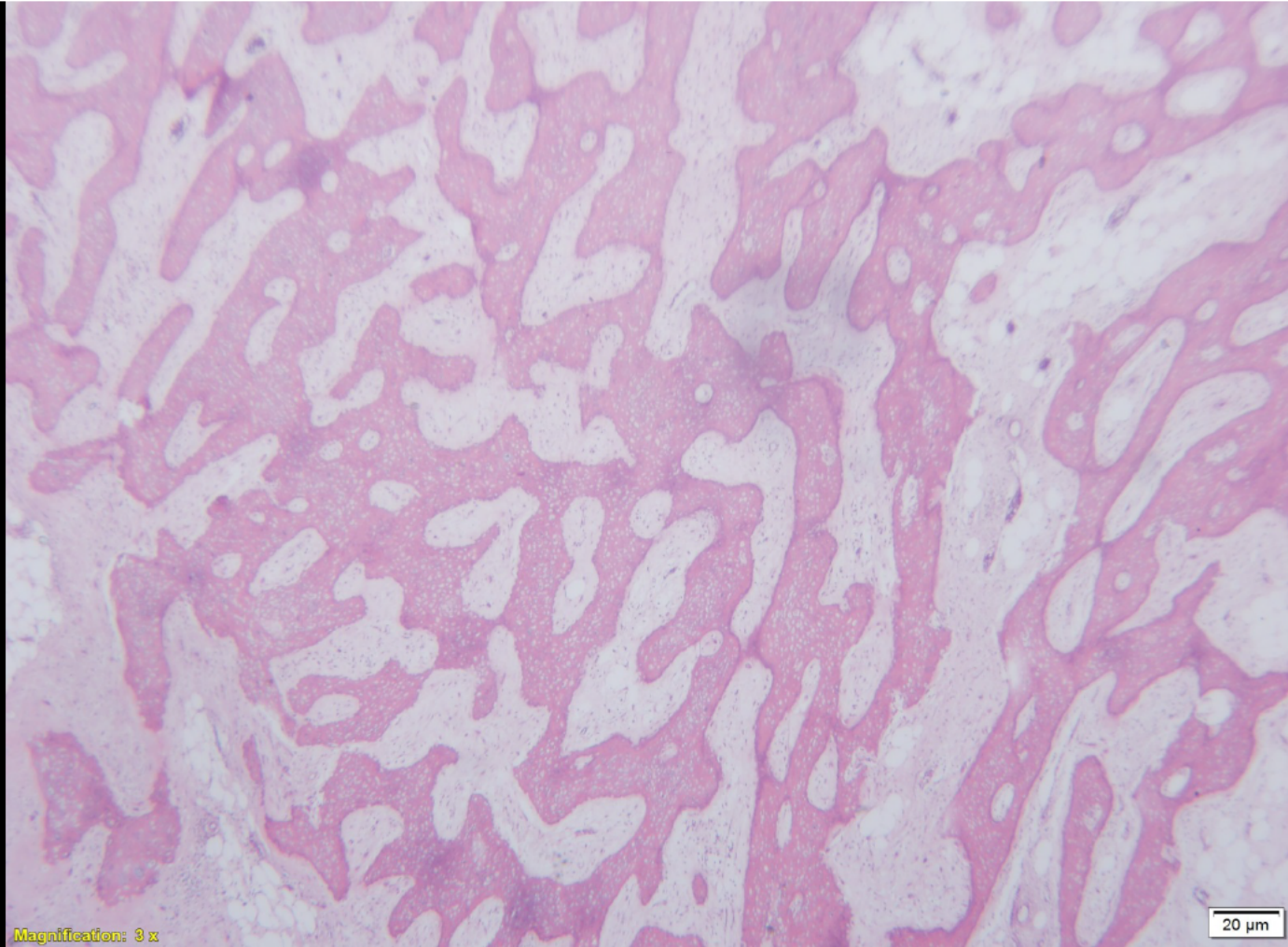


AIRPTM

AMERICAN INSTITUTE FOR
RADIOLOGIC PATHOLOGY

A PROGRAM OF THE
AMERICAN COLLEGE OF RADIOLOGY



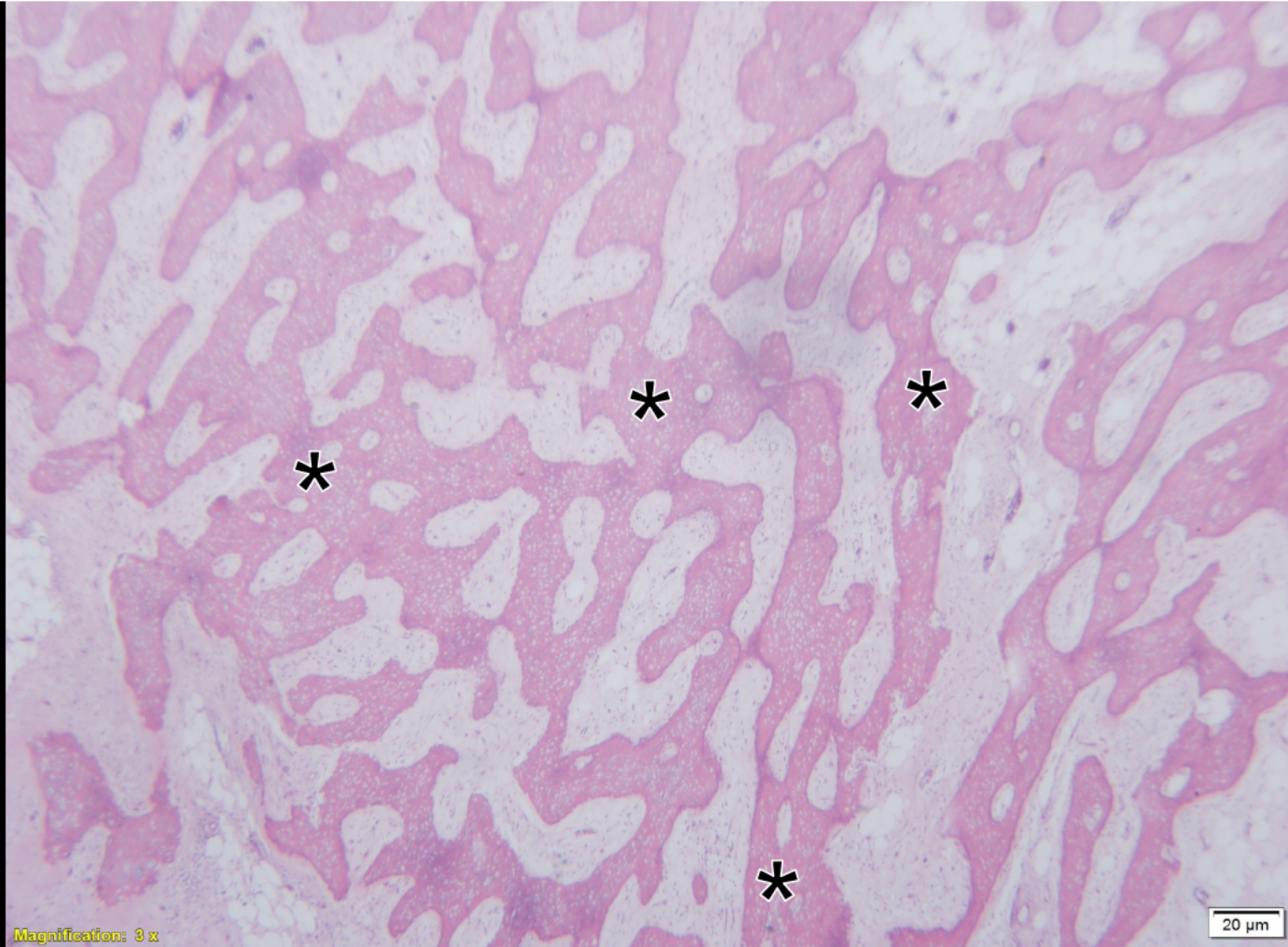


AIRP™

AMERICAN INSTITUTE FOR
RADIOLOGIC PATHOLOGY

A PROGRAM OF THE
AMERICAN COLLEGE OF RADIOLOGY

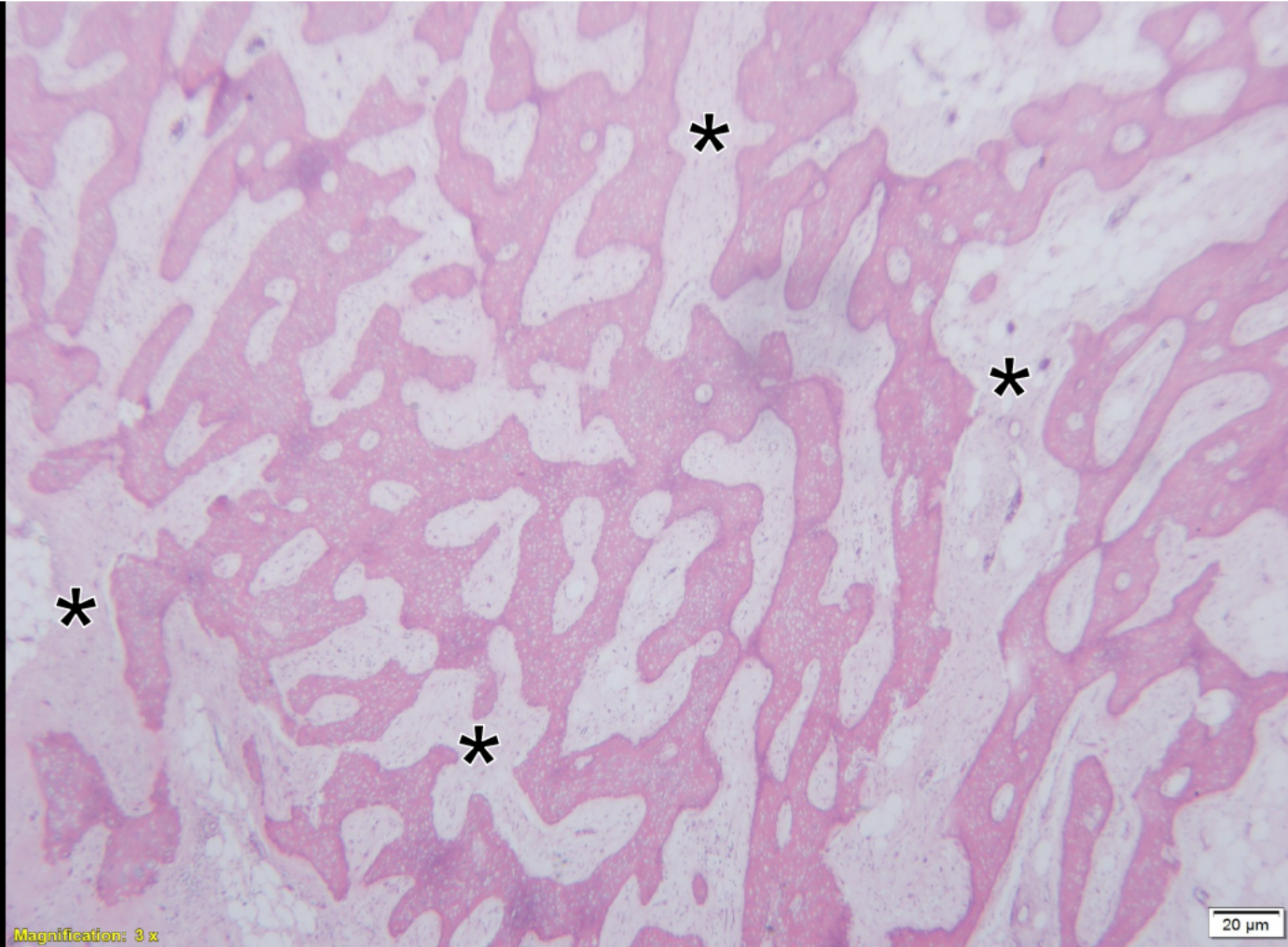




AIRPTM
AMERICAN INSTITUTE FOR
RADIOLOGIC PATHOLOGY

A PROGRAM OF THE
AMERICAN COLLEGE OF RADIOLOGY



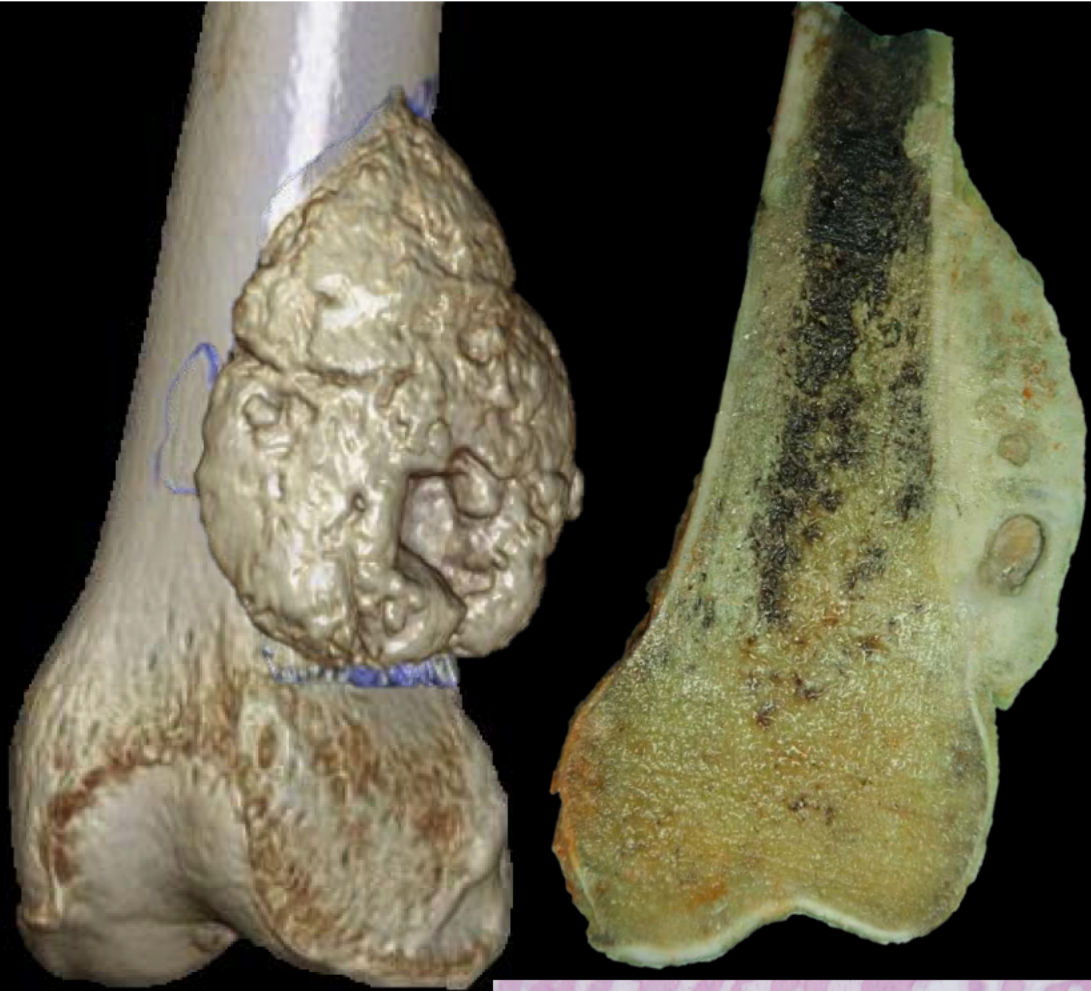
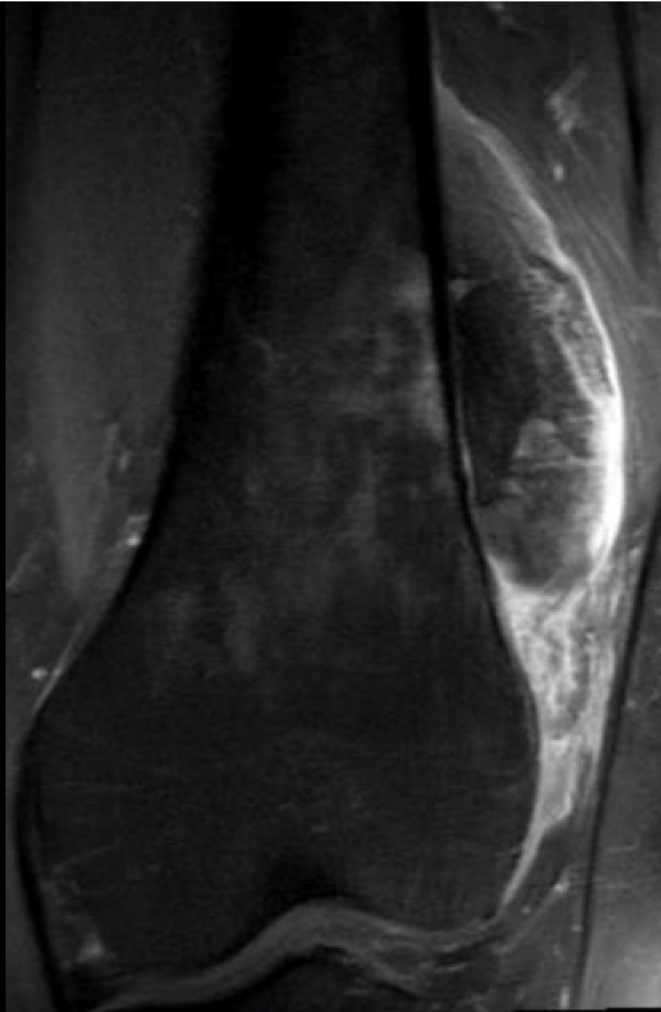


AIRPTM

AMERICAN INSTITUTE FOR
RADIOLOGIC PATHOLOGY

A PROGRAM OF THE
AMERICAN COLLEGE OF RADIOLOGY

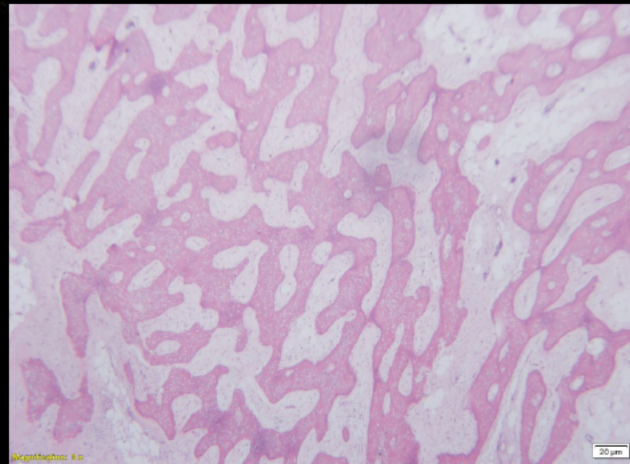




AIRPTM

AMERICAN INSTITUTE FOR
RADIOLOGIC PATHOLOGY

A PROGRAM OF THE
AMERICAN COLLEGE OF RADIOLOGY



PAROSTEAL OSTEOSARCOMA

Dr. Elias Kikano

**Case Western Reserve University
Cleveland, Ohio**

AIRPTM

AMERICAN INSTITUTE FOR
RADIOLOGIC PATHOLOGY

A PROGRAM OF THE
AMERICAN COLLEGE OF RADIOLOGY

Gastrointestinal Best Case



AIRPTM

AMERICAN INSTITUTE FOR
RADIOLOGIC PATHOLOGY

A PROGRAM OF THE
AMERICAN COLLEGE OF RADIOLOGY

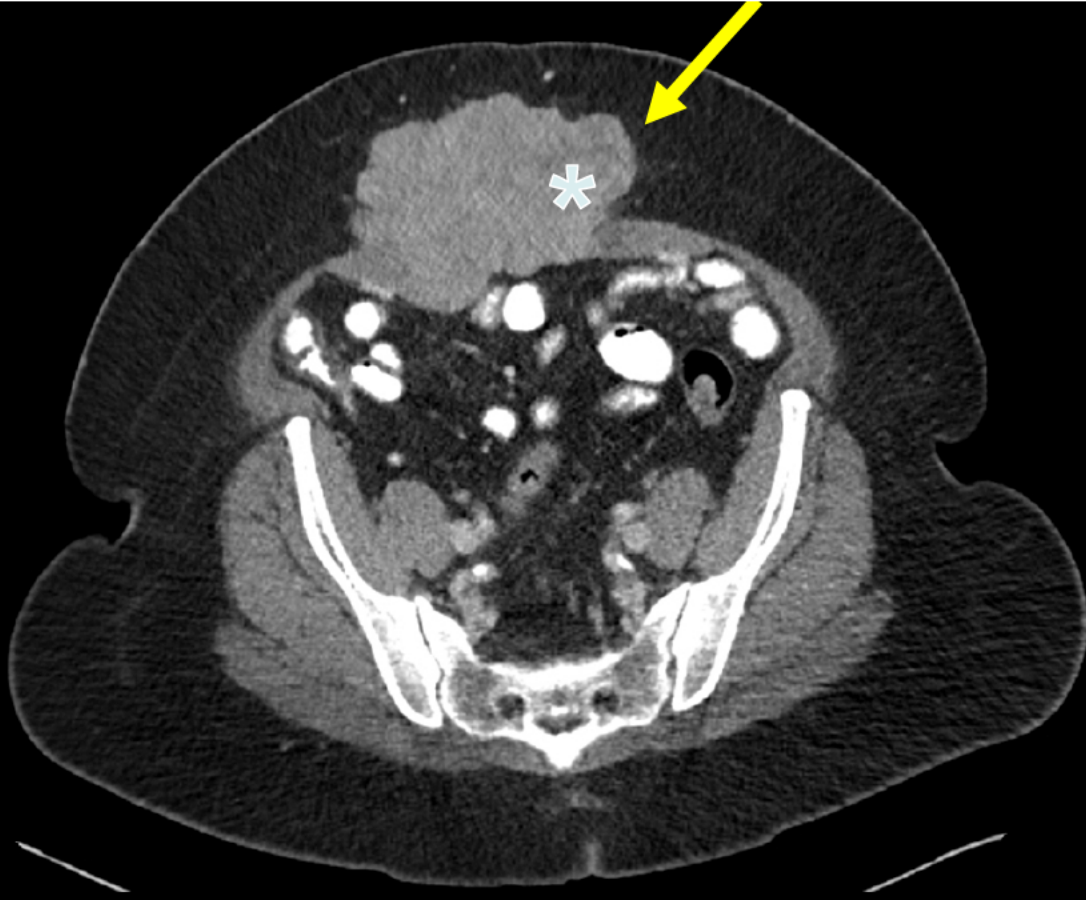
Clinical information

49-year-old African American female with a painful, hard periumbilical abdominal wall mass. PMH significant for HTN and multiple Caesarean sections.



AMERICAN INSTITUTE FOR
RADIOLOGIC PATHOLOGY

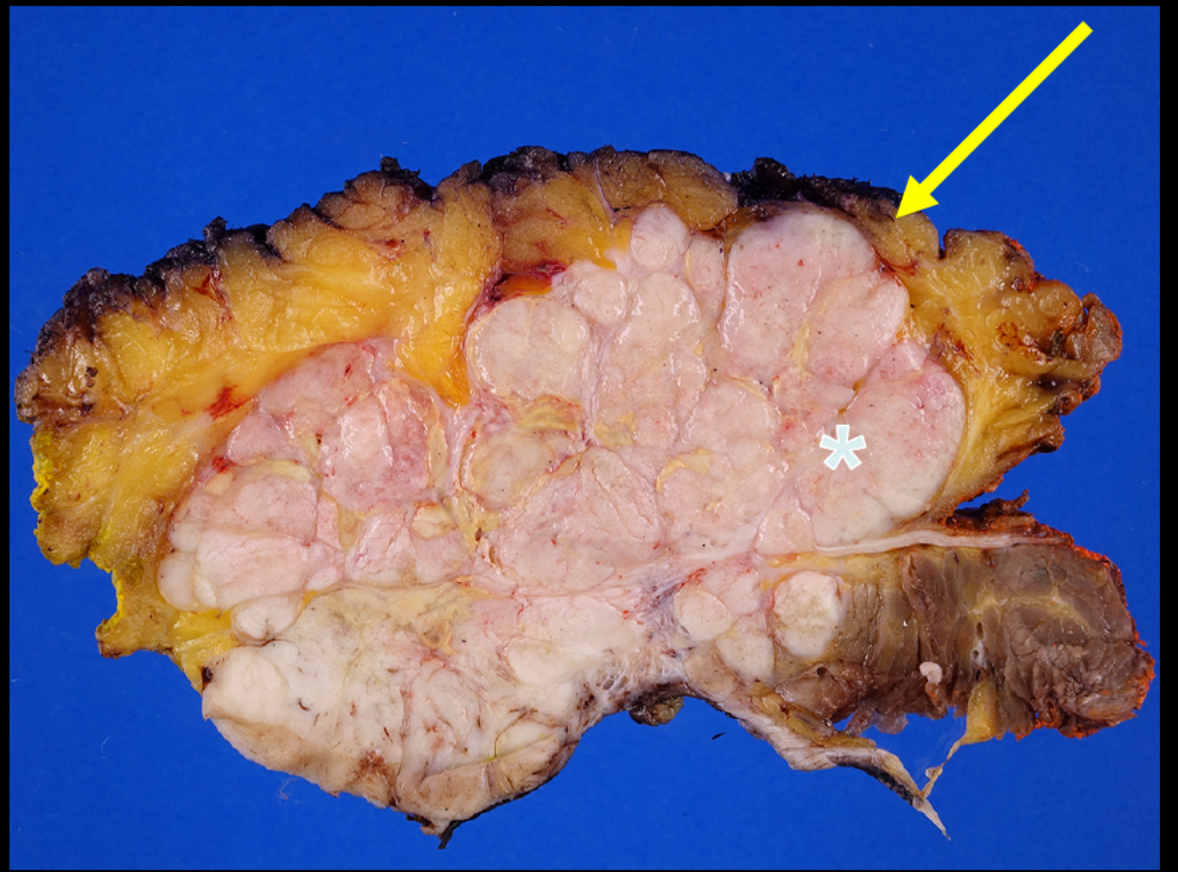
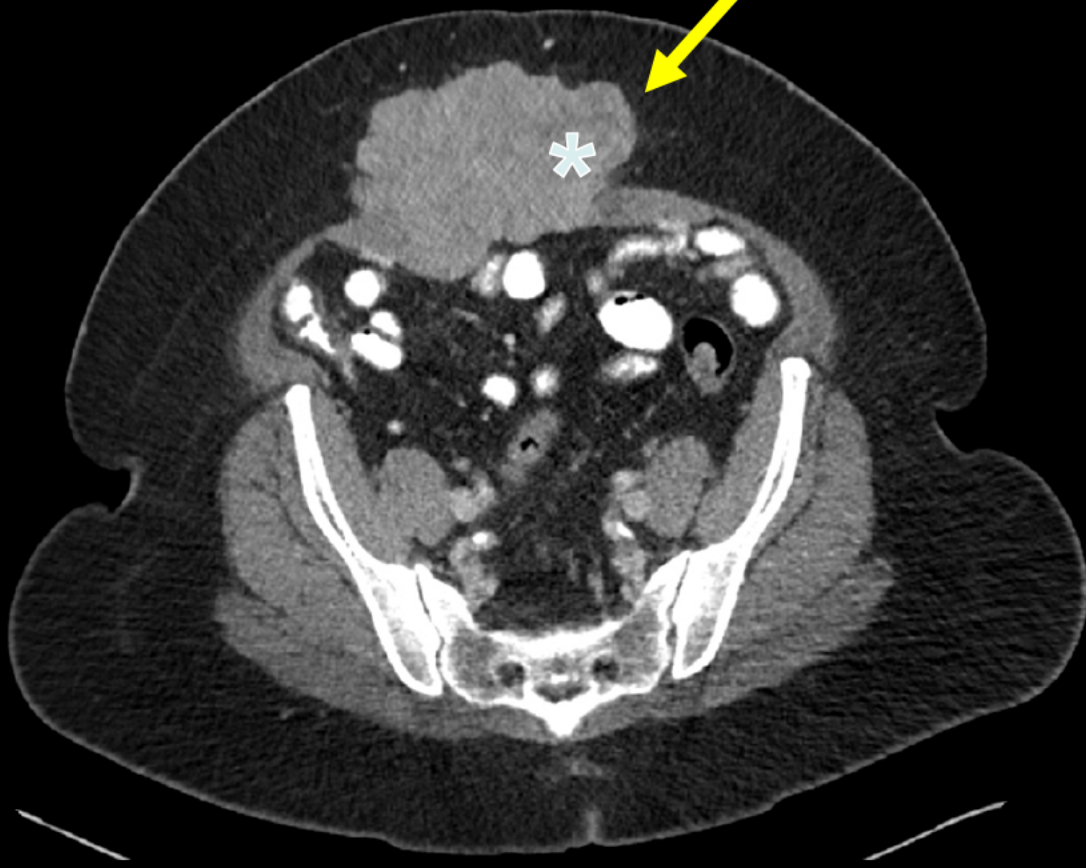
A PROGRAM OF THE
AMERICAN COLLEGE OF RADIOLOGY



AIRPTM

AMERICAN INSTITUTE FOR
RADIOLOGIC PATHOLOGY

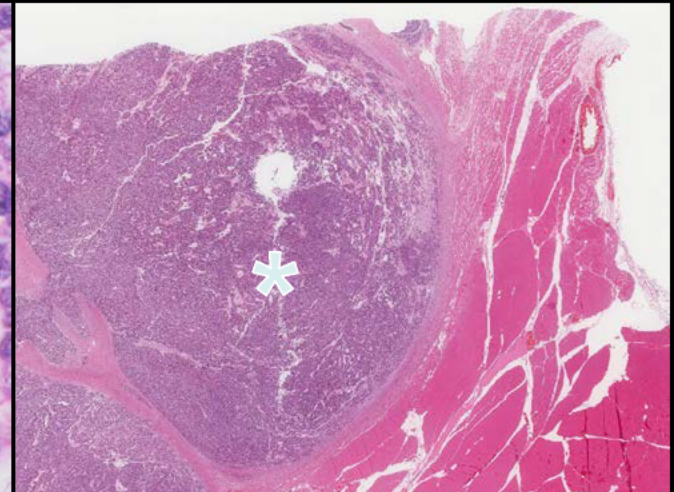
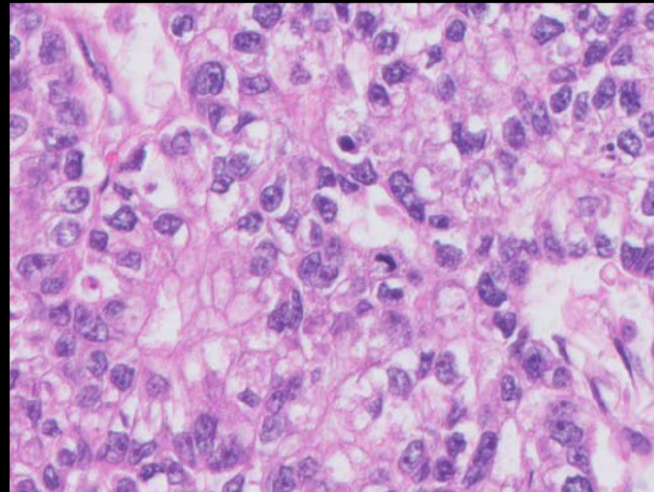
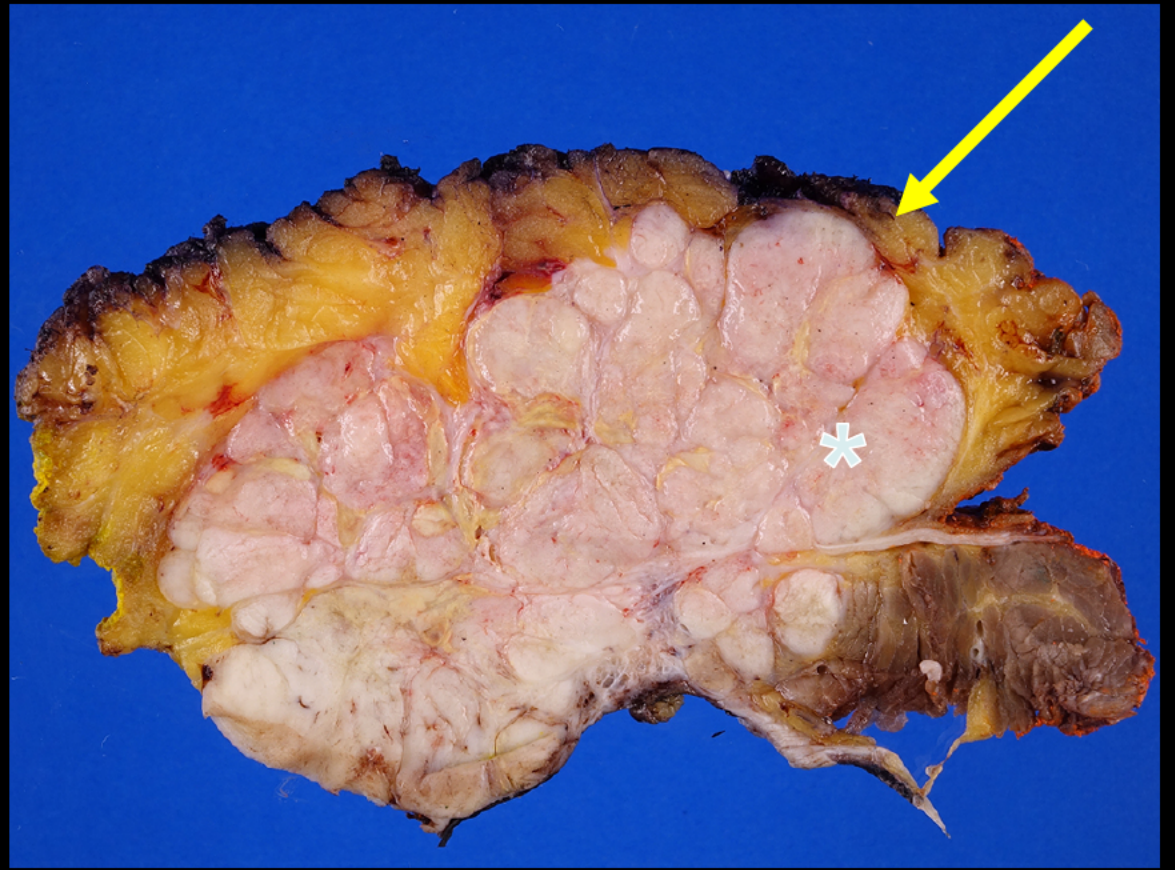
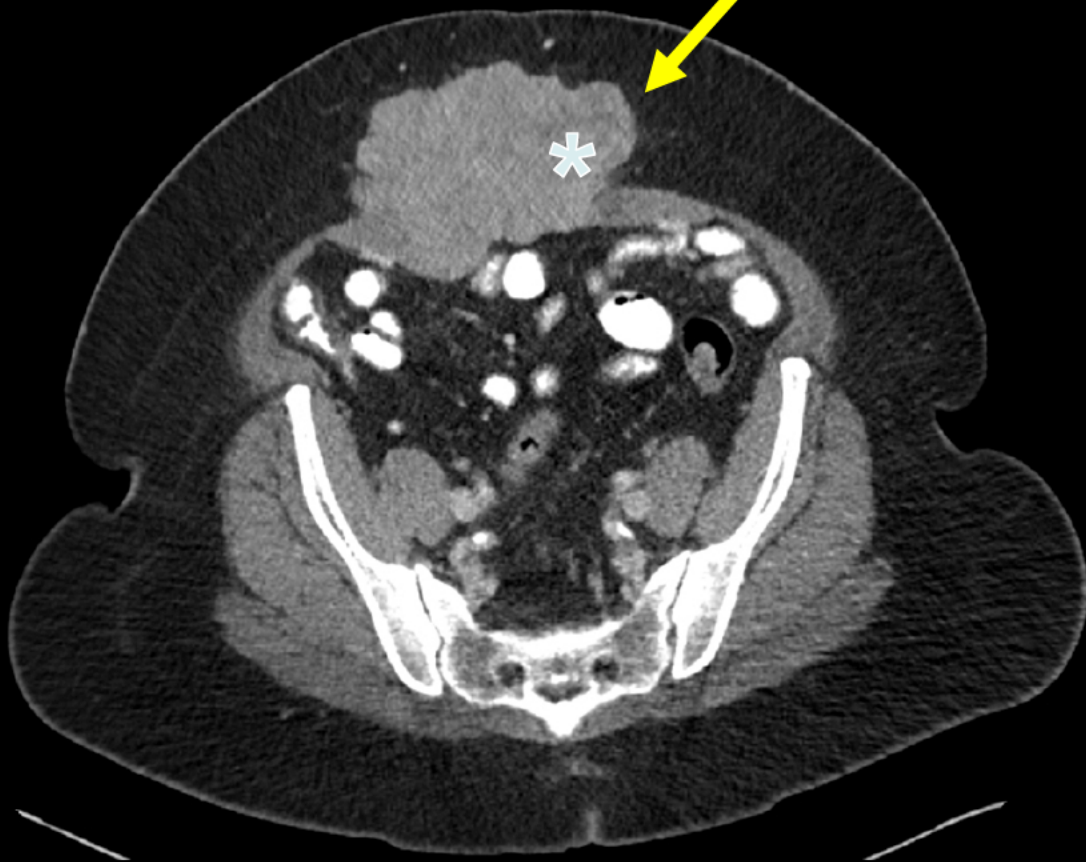
A PROGRAM OF THE
AMERICAN COLLEGE OF RADIOLOGY



AIRPTM

AMERICAN INSTITUTE FOR
RADIOLOGIC PATHOLOGY

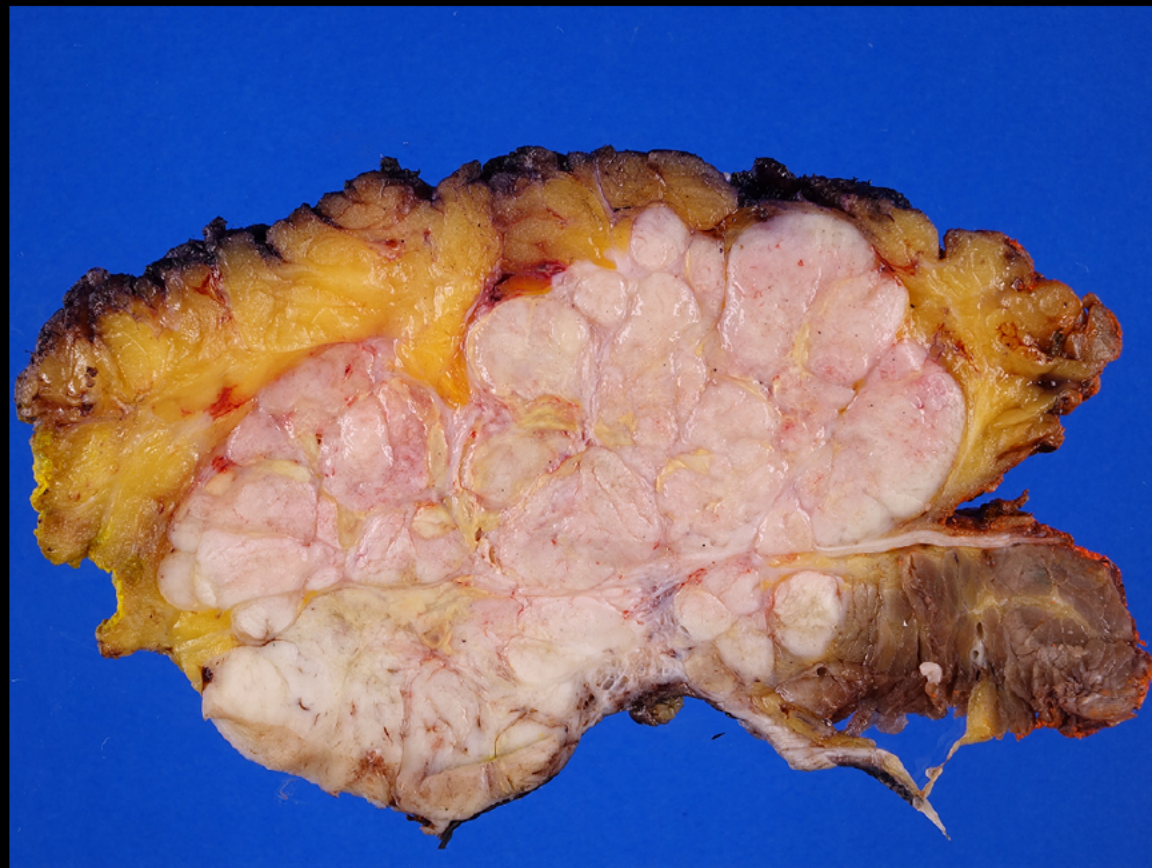
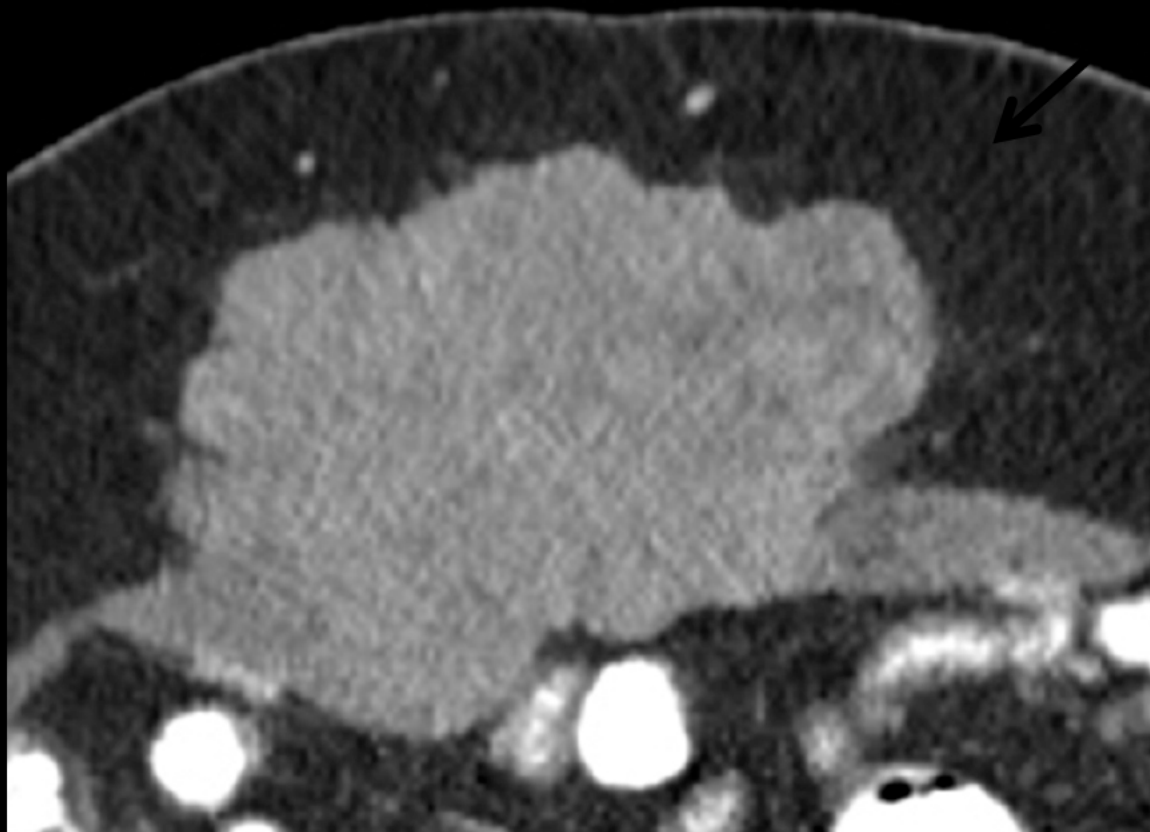
A PROGRAM OF THE
AMERICAN COLLEGE OF RADIOLOGY



AIRPTM

AMERICAN INSTITUTE FOR
RADIOLOGIC PATHOLOGY

A PROGRAM OF THE
AMERICAN COLLEGE OF RADIOLOGY



AIRPTM

AMERICAN INSTITUTE FOR
RADIOLOGIC PATHOLOGY

A PROGRAM OF THE
AMERICAN COLLEGE OF RADIOLOGY

Clear cell carcinoma in C-section scar

Edward Gayou

Ohio State University – Wexner Medical Center

Columbus, OH

AIRPTM

AMERICAN INSTITUTE FOR
RADIOLOGIC PATHOLOGY

A PROGRAM OF THE
AMERICAN COLLEGE OF RADIOLOGY

Neuroradiology Best Case



AIRPTM

AMERICAN INSTITUTE FOR
RADIOLOGIC PATHOLOGY

A PROGRAM OF THE
AMERICAN COLLEGE OF RADIOLOGY

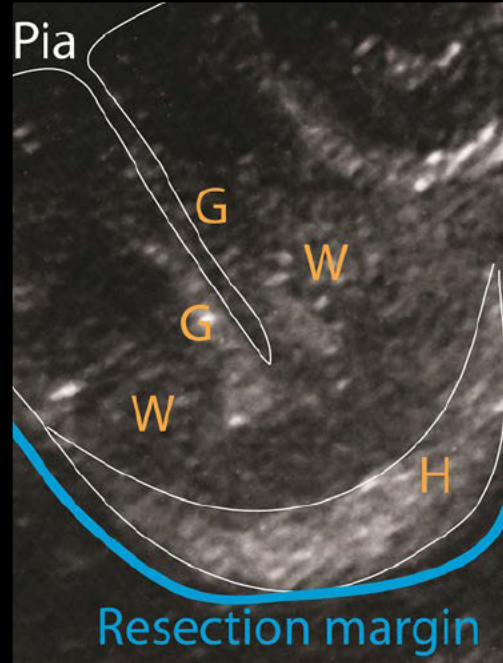
Clinical information

5-year-old male with partial complex seizures since 1 year of age. Increasing frequency of seizures despite 3 antiepileptic medications. Now with expressive and receptive speech delay and cognitive delay. EEG showed right fronto-central epileptiform discharge



AMERICAN INSTITUTE FOR
RADIOLOGIC PATHOLOGY

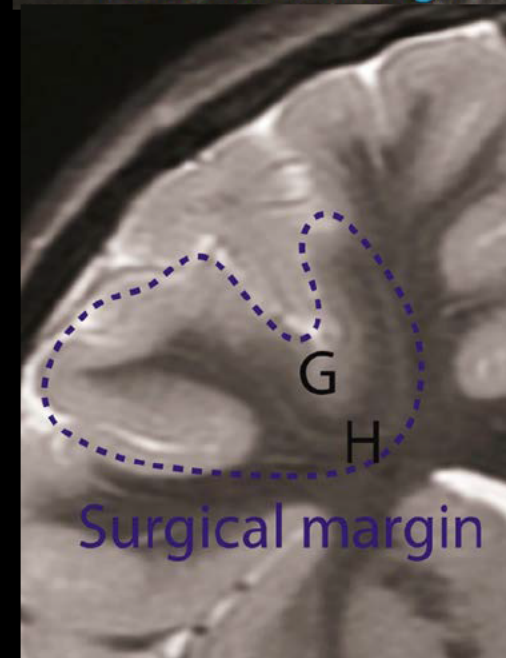
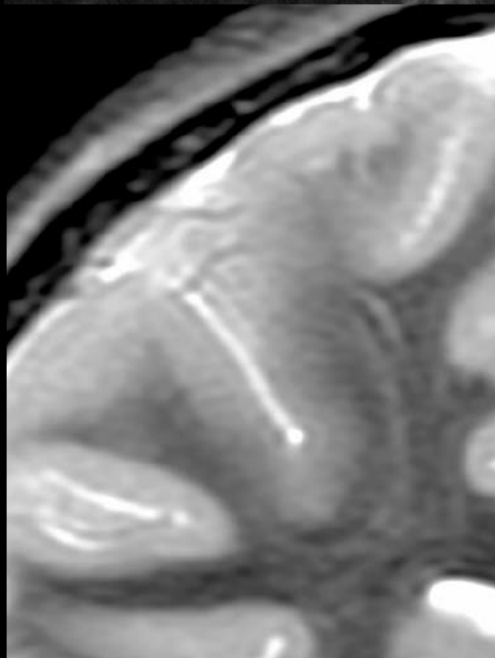
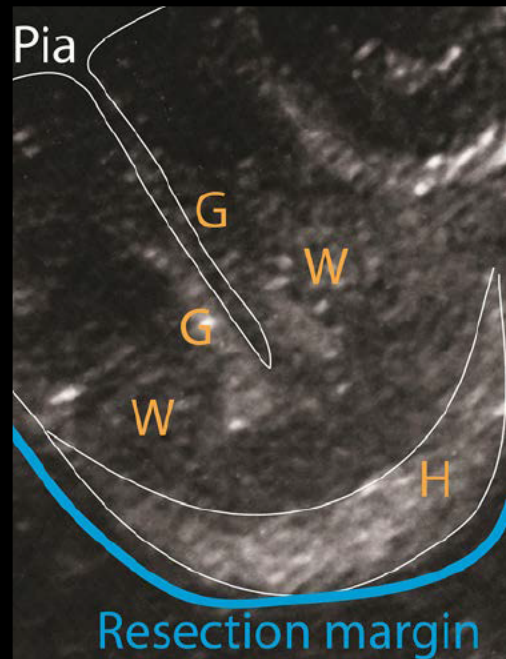
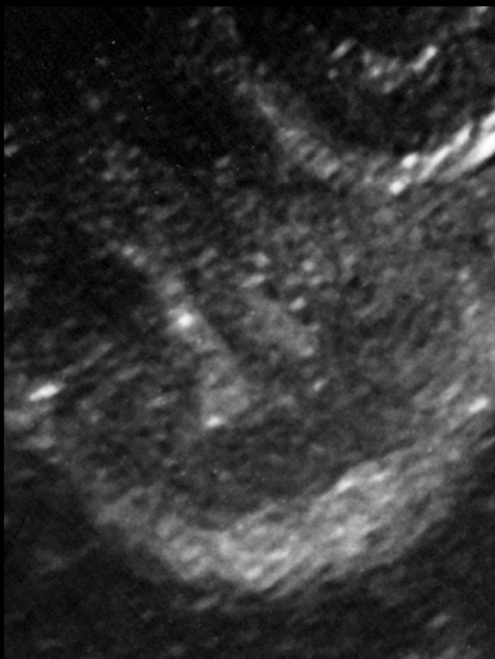
A PROGRAM OF THE
AMERICAN COLLEGE OF RADIOLOGY

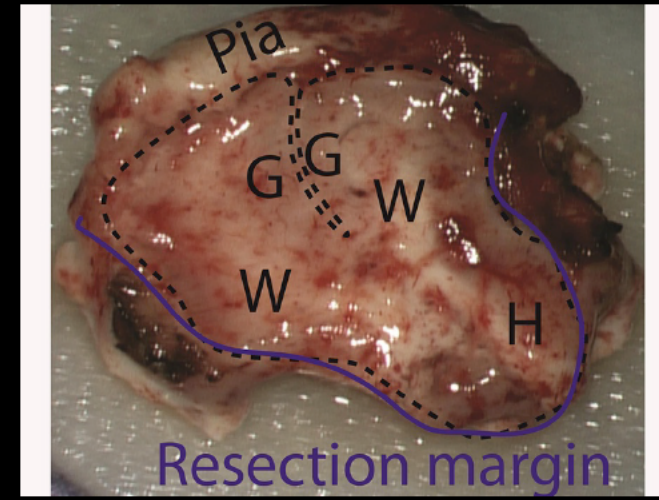
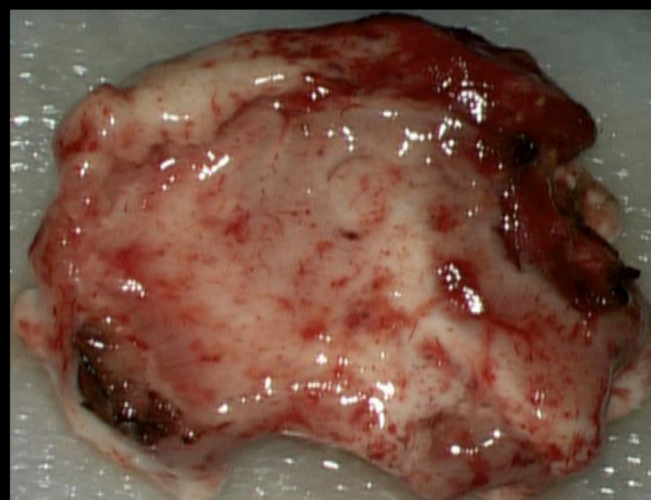
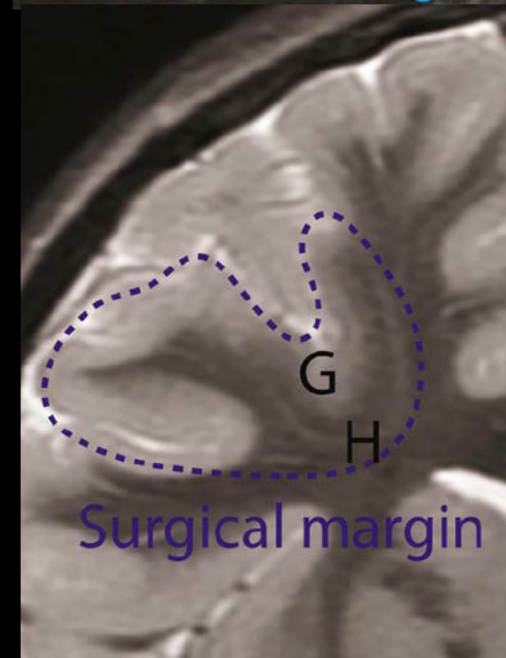
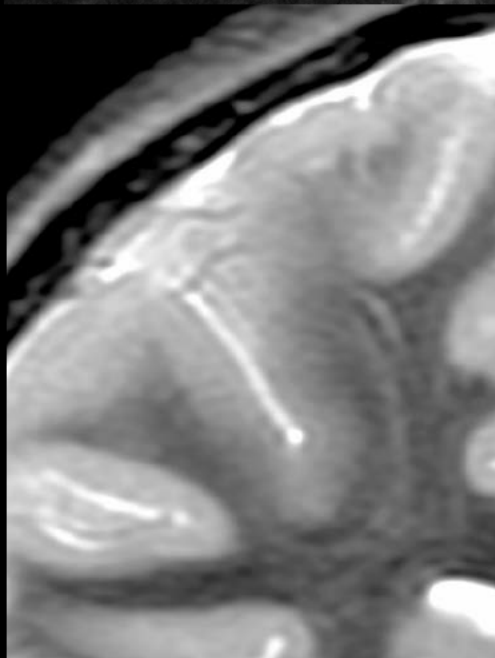
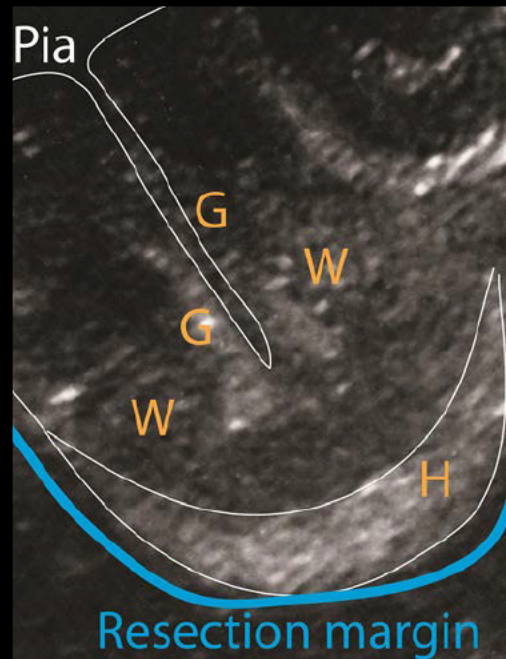
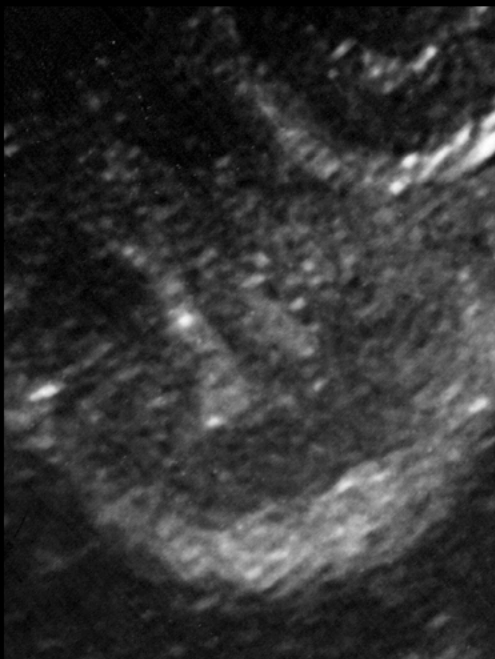


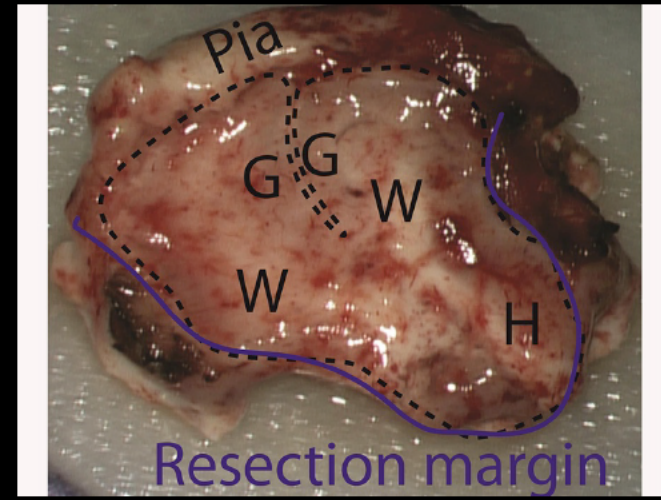
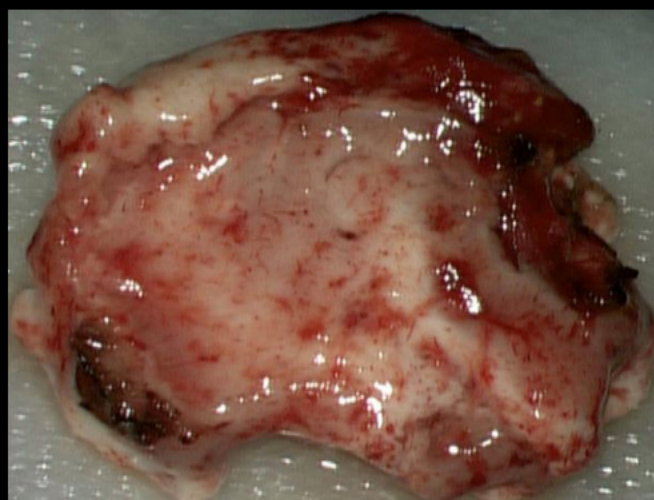
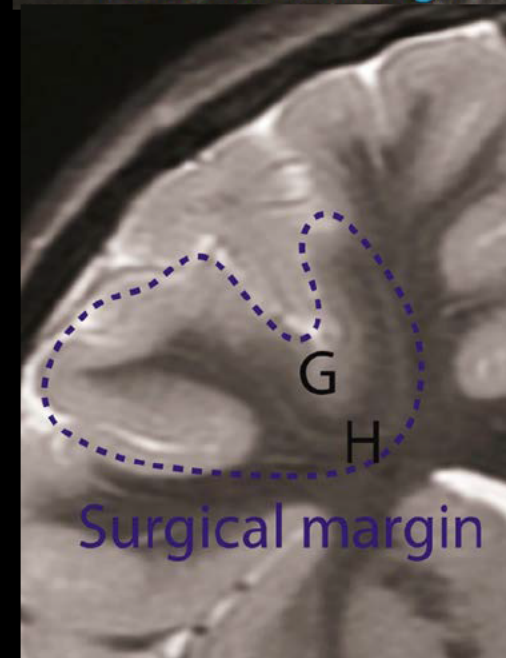
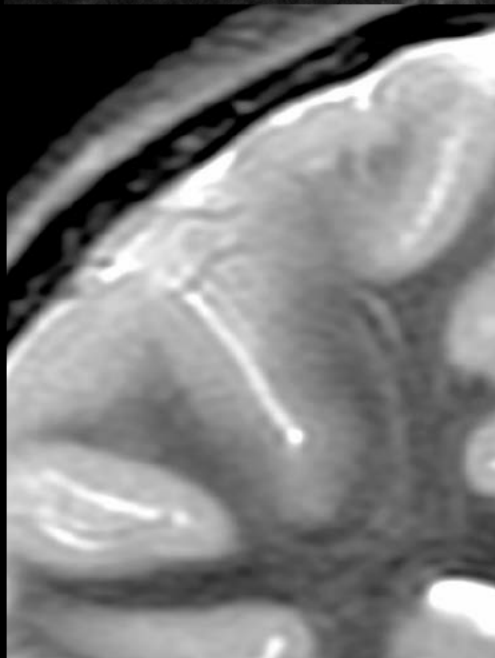
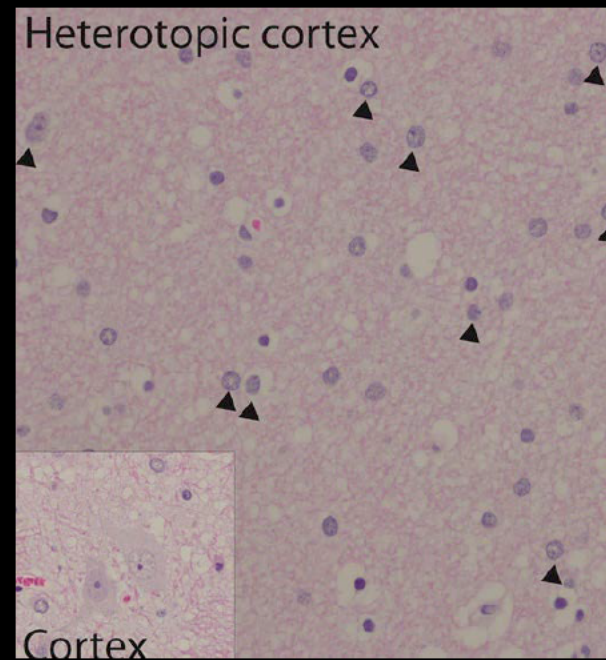
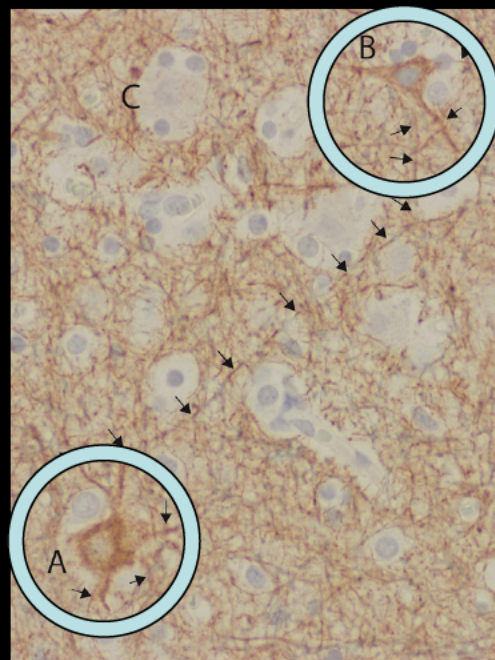
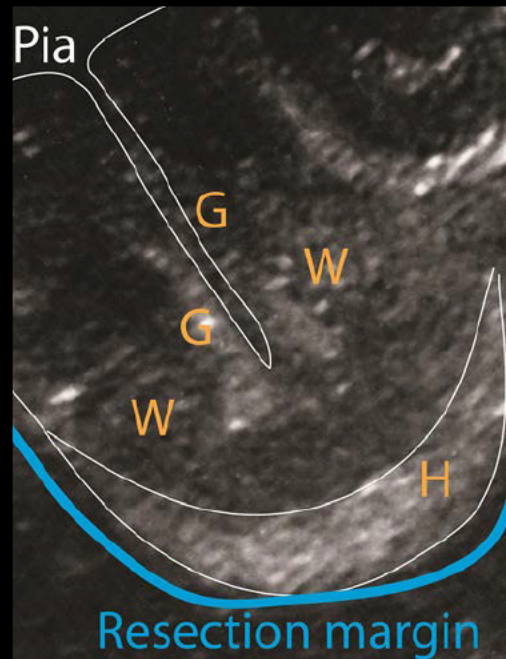
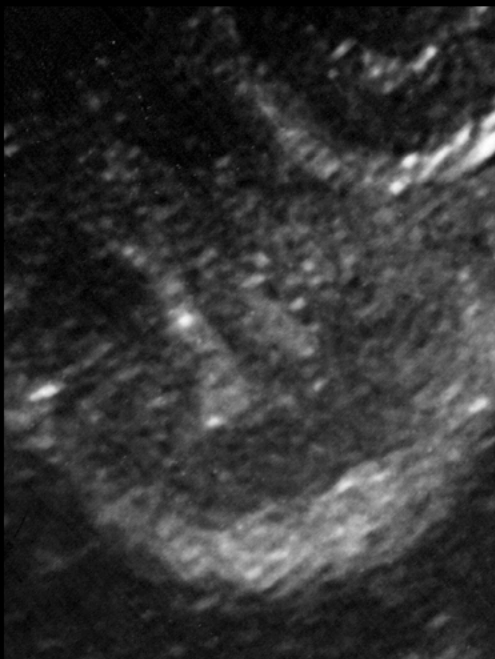
AIRPTM

AMERICAN INSTITUTE FOR
RADIOLOGIC PATHOLOGY

A PROGRAM OF THE
AMERICAN COLLEGE OF RADIOLOGY







Focal Cortical Dysplasia with Band Heterotopia

Jaehoon Shin

University of California

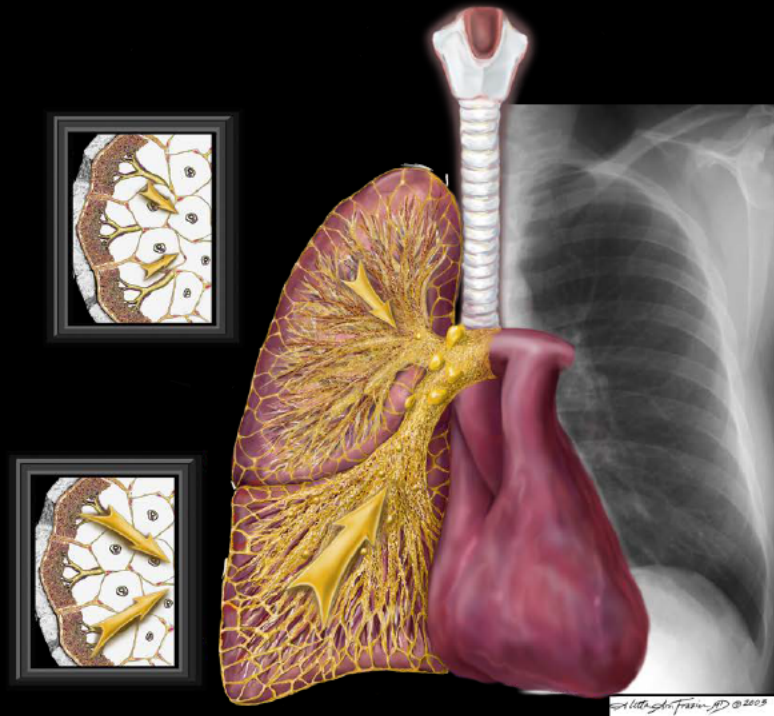
San Francisco, California

AIRPTM

AMERICAN INSTITUTE FOR
RADIOLOGIC PATHOLOGY

A PROGRAM OF THE
AMERICAN COLLEGE OF RADIOLOGY

Pulmonary and Mediastinal Best Case



AIRP™

AMERICAN INSTITUTE FOR
RADIOLOGIC PATHOLOGY

A PROGRAM OF THE
AMERICAN COLLEGE OF RADIOLOGY

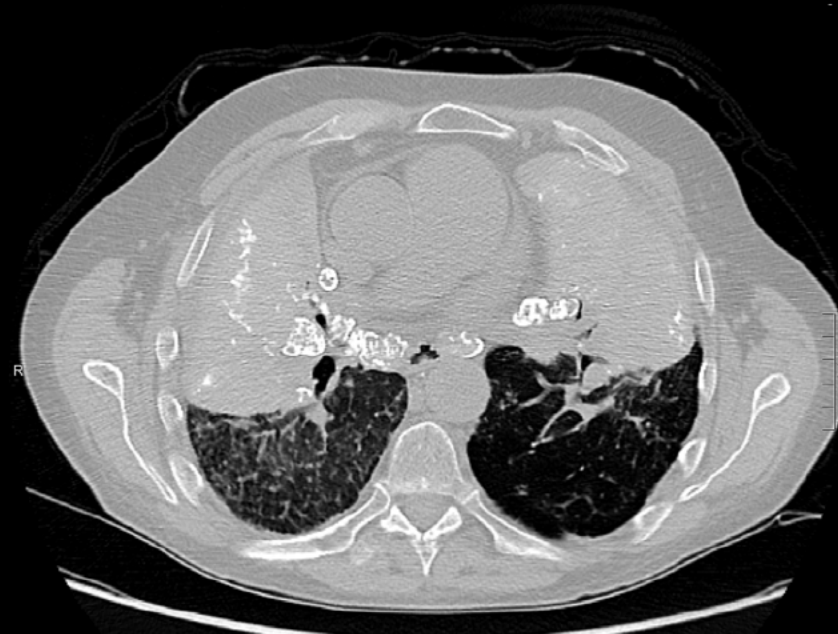
Clinical information

57-year-old non-smoking coal worker

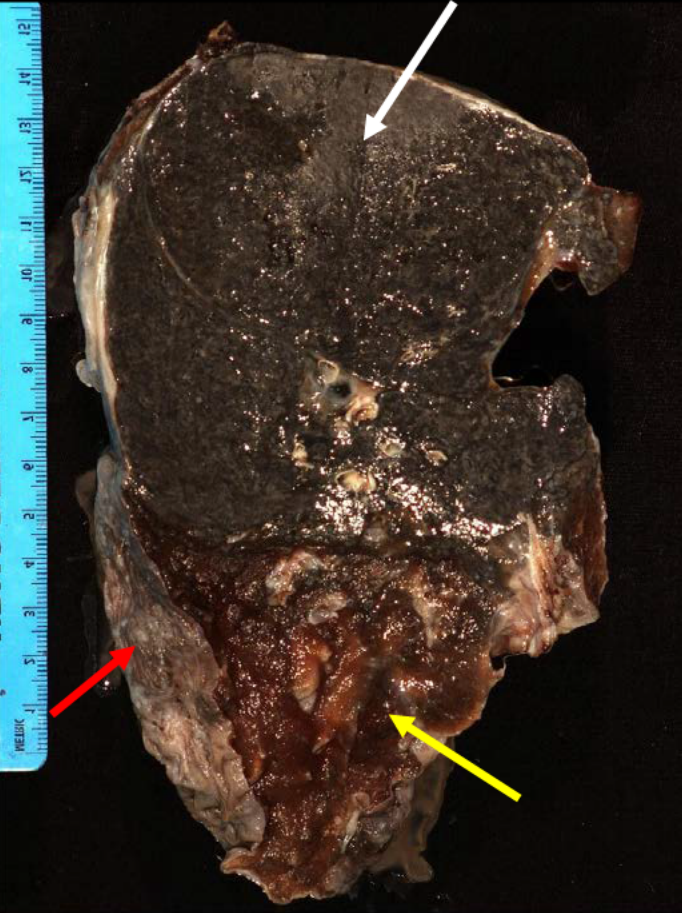


AMERICAN INSTITUTE FOR
RADIOLOGIC PATHOLOGY

A PROGRAM OF THE
AMERICAN COLLEGE OF RADIOLOGY



Gross



- Red- anthracotic pigmented pleural nodule
- White arrow- conglomerate area of macronodules in the upper lobe.
- Yellow- lower lobe hemorrhage

Regional lymph node showing carbon staining and necrosis

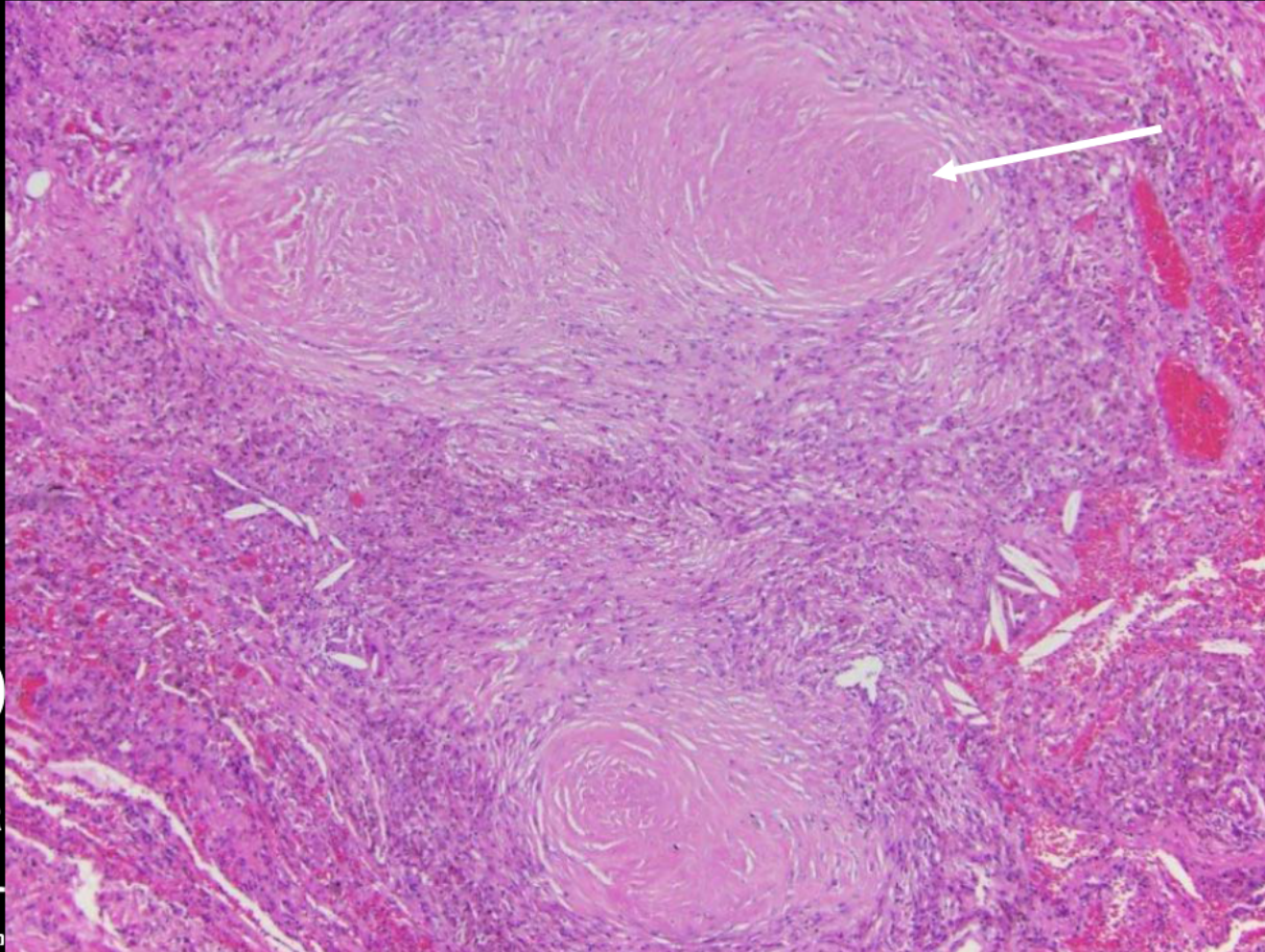


AIRP

AMERICAN INSTITUTE FOR
RADIOLOGIC PATHOLOGY

A PROGRAM OF THE
AMERICAN COLLEGE OF RADIOLOGISTS

Micro



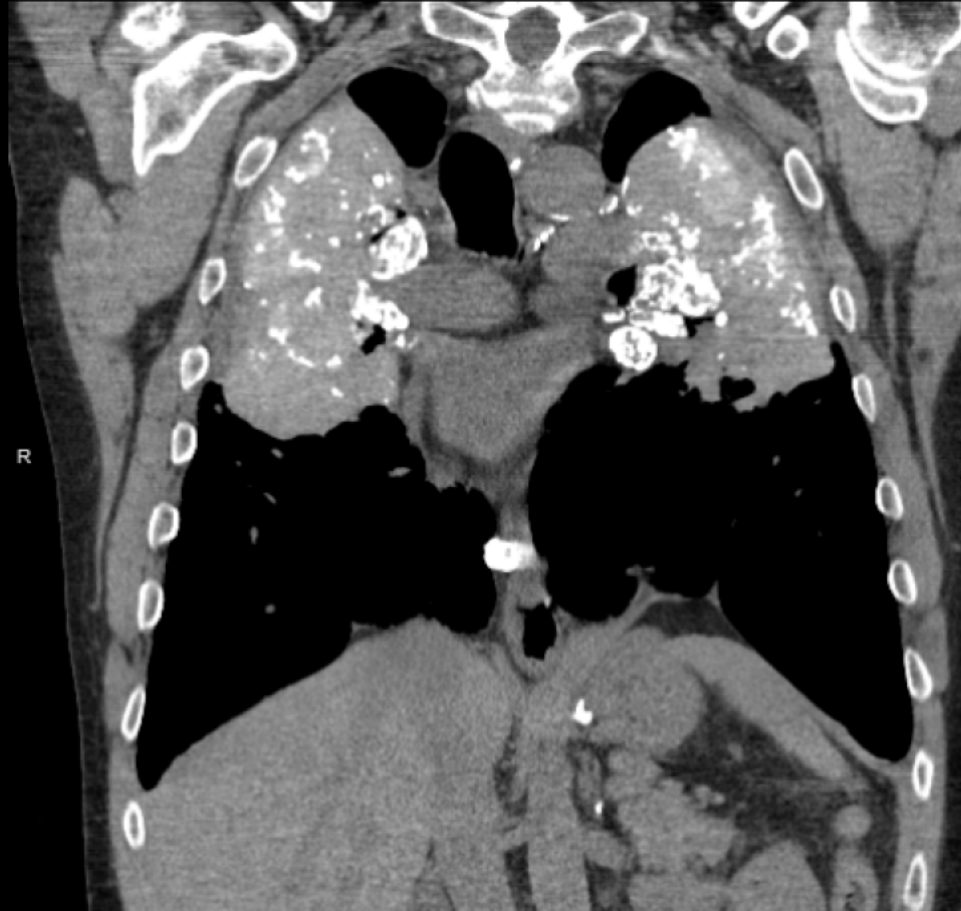
Arrow- Confluent
anthracosilicotic nodules

AIRP

AMERICAN INSTITUTE FOR
RADIOLOGIC PATHOLOGY

A PROGRAM OF THE
AMERICAN COLLEGE OF RADIOLOGISTS

Coal-workers pneumoconiosis



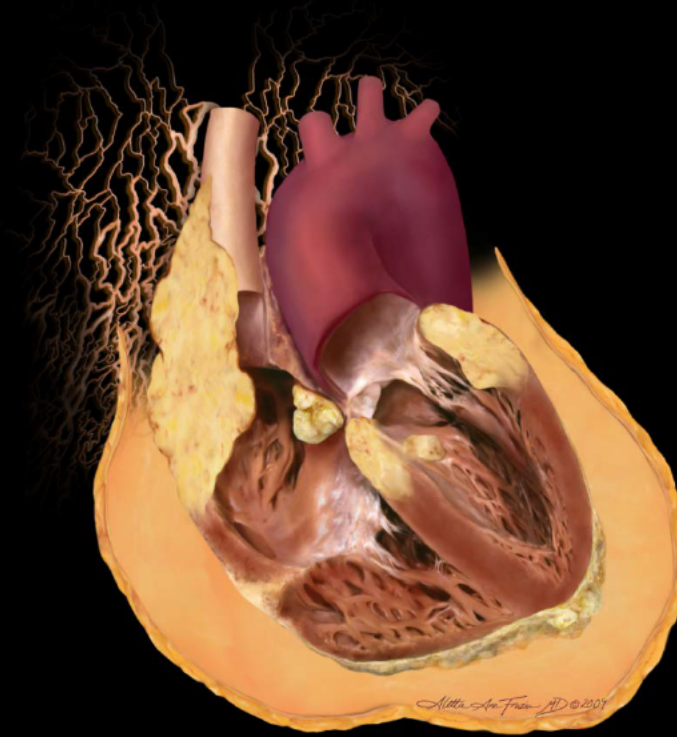
Kimberly Rongo
UPMC
Pittsburgh, PA

AIRPTM

AMERICAN INSTITUTE FOR
RADIOLOGIC PATHOLOGY

A PROGRAM OF THE
AMERICAN COLLEGE OF RADIOLOGY

Cardiovascular Best Case



AIRP™

AMERICAN INSTITUTE FOR
RADIOLOGIC PATHOLOGY

A PROGRAM OF THE
AMERICAN COLLEGE OF RADIOLOGY

Clinical information

71-year-old male presents with left flank pain. He is an active smoker with systemic hypertension and diabetes mellitus type 2.

In addition to CT features diagnostic of acute diverticulitis, there are unexpected findings related to the aorta ...

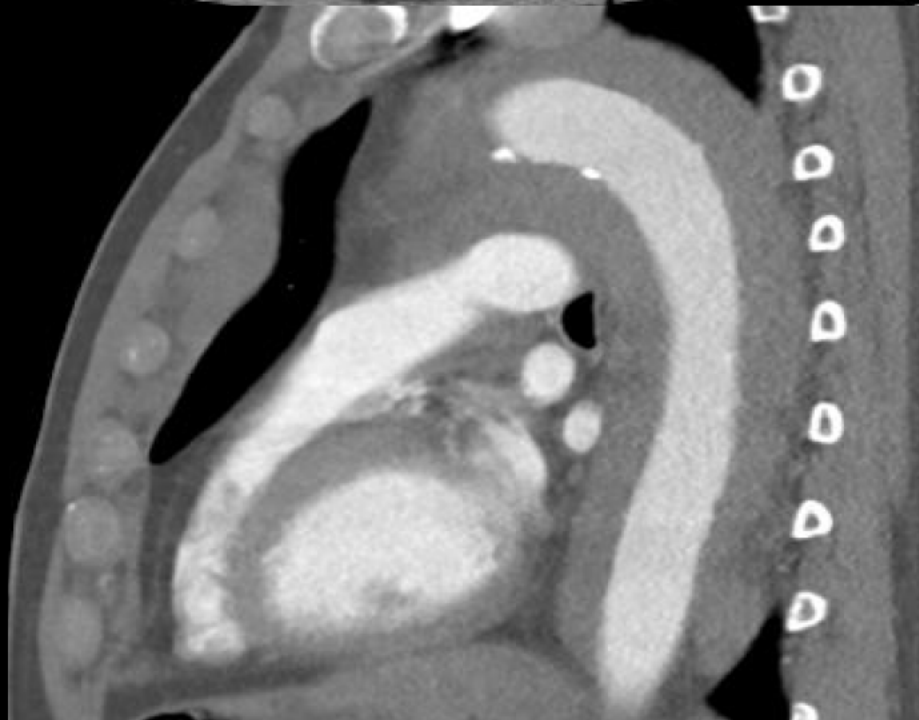
AIRPTM

AMERICAN INSTITUTE FOR
RADIOLOGIC PATHOLOGY

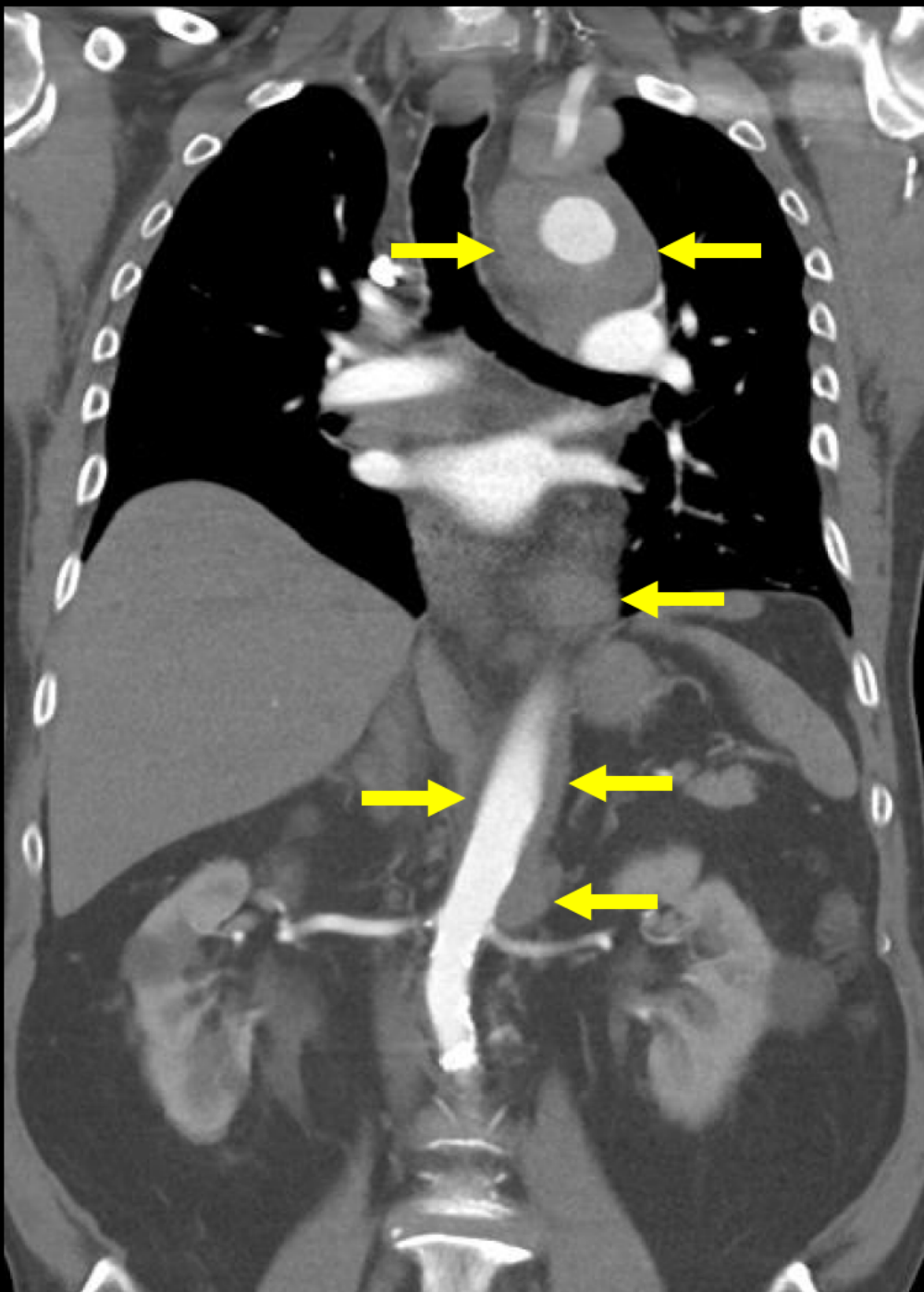
A PROGRAM OF THE
AMERICAN COLLEGE OF RADIOLOGY



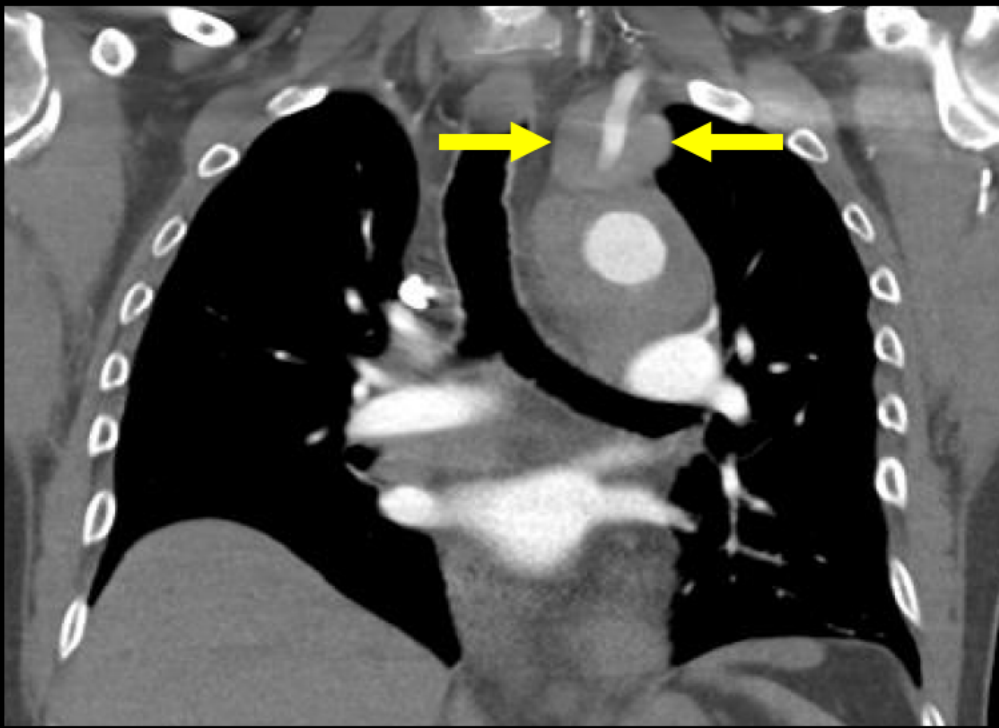
- Thoracic & abdominal aortic wall thickening



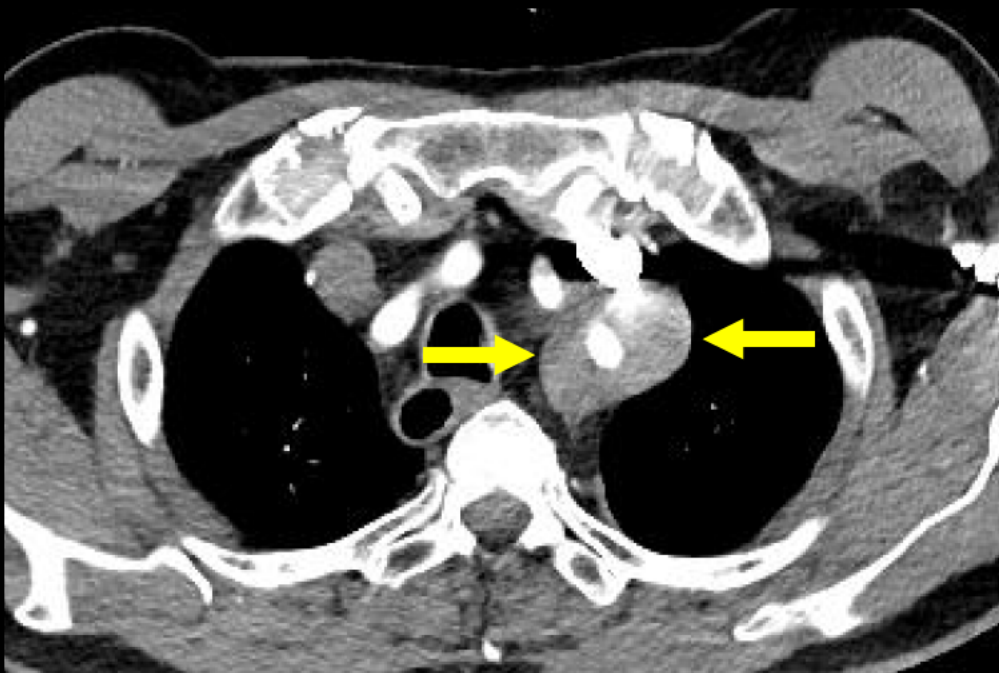
- Circumferential and lobulated periaortic soft tissue

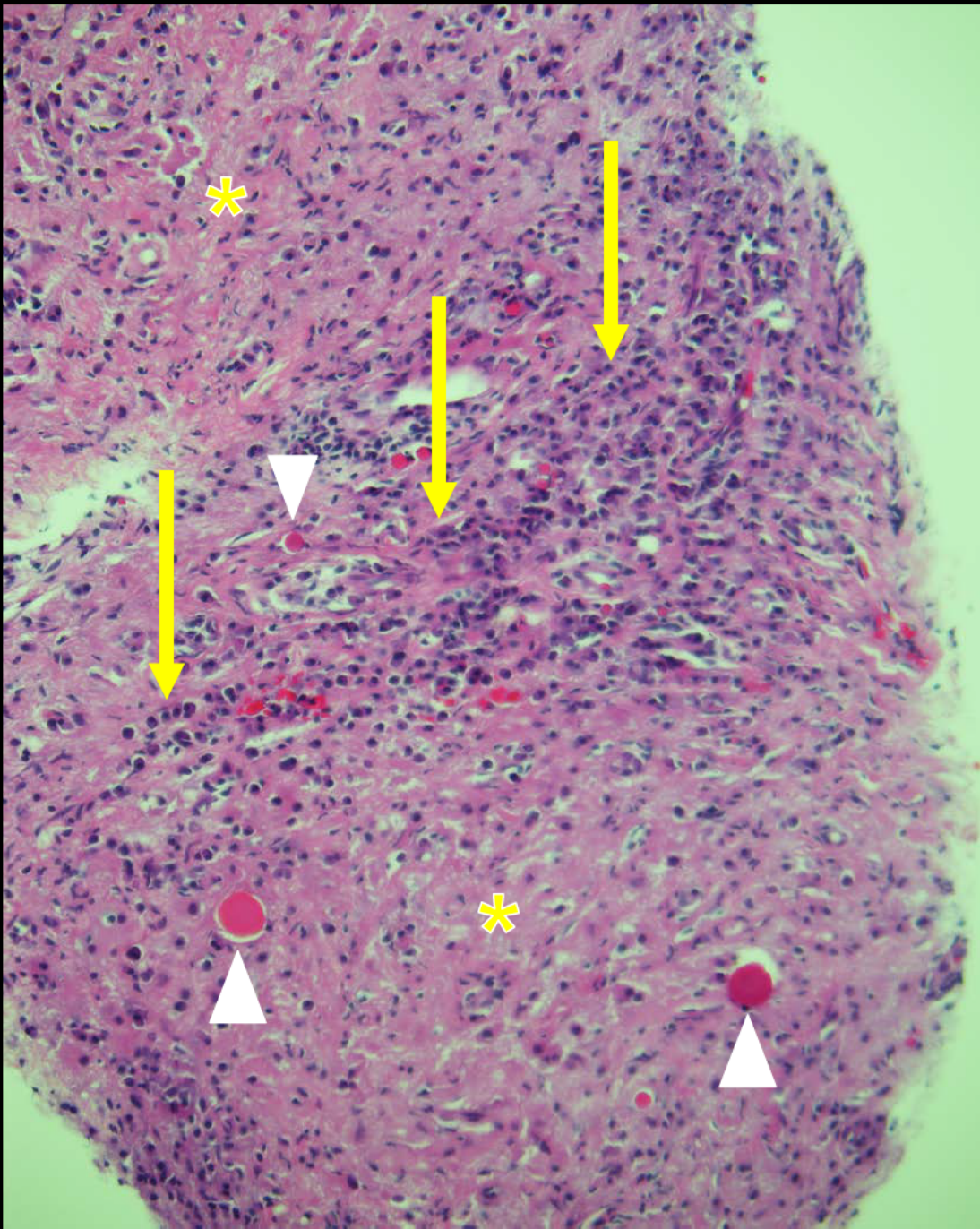


- Thoracic & abdominal aortic wall thickening
- Circumferential and lobulated periaortic soft tissue

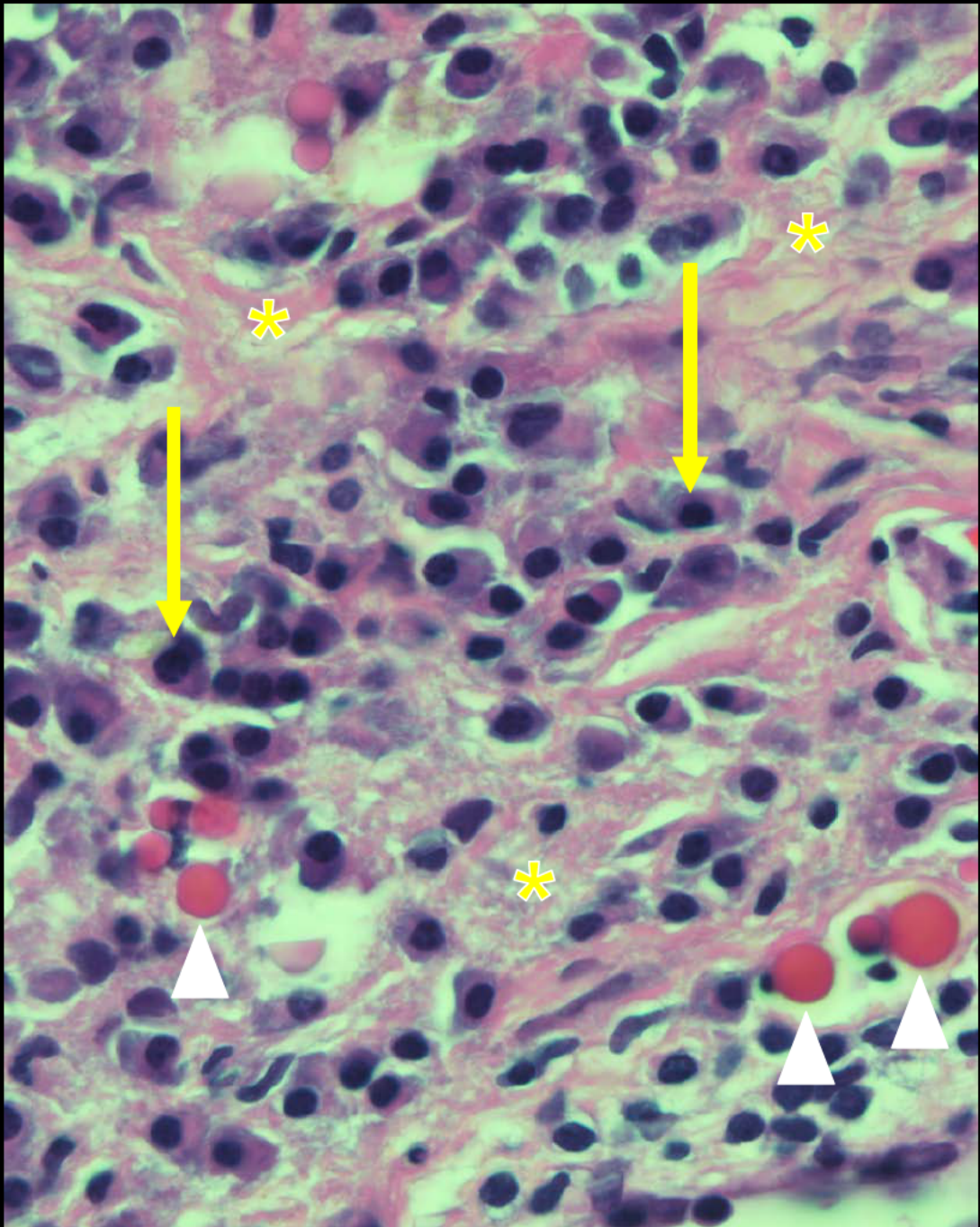


- Proximal left subclavian artery also demonstrates soft tissue encasement





- Histology shows an infiltrate of plasma cells (arrows), some containing “Russell bodies” (eosinophilic inclusions - arrowheads), on a background of fibrosis (asterisks).



- Histology shows an infiltrate of plasma cells (arrows), some containing “Russell bodies” (eosinophilic inclusions - arrowheads), on a background of fibrosis (asterisks).

IgG4-related Sclerosing Disease: Aortitis

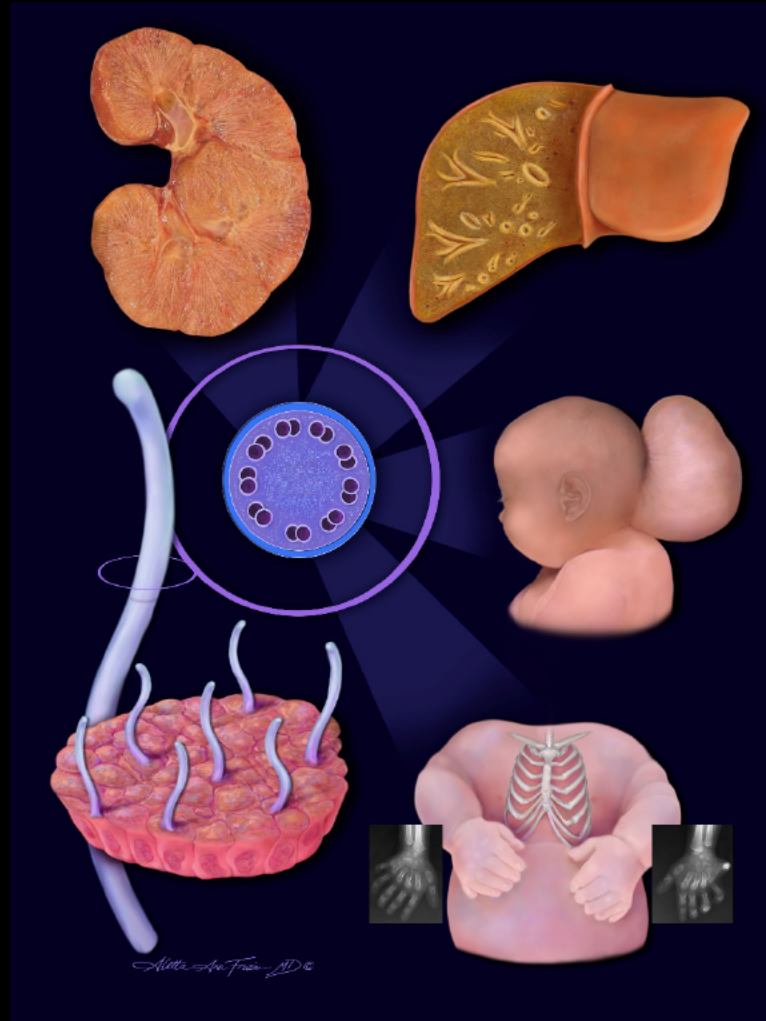
Amanda Marrero Gonzalez
University of Puerto Rico
San Juan, PR



**AMERICAN INSTITUTE FOR
RADIOLOGIC PATHOLOGY**

**A PROGRAM OF THE
AMERICAN COLLEGE OF RADIOLOGY**

Pediatric Best Case



AIRP™

AMERICAN INSTITUTE FOR
RADIOLOGIC PATHOLOGY

A PROGRAM OF THE
AMERICAN COLLEGE OF RADIOLOGY

Clinical information

Patient is a 3-year, 9-month-old white male with no significant past medical history presented to the ER with initial complaint of left knee pain and recent onset limping. No recent trauma was reported. Patient had no fever, chills, or myalgias.



AMERICAN INSTITUTE FOR
RADIOLOGIC PATHOLOGY

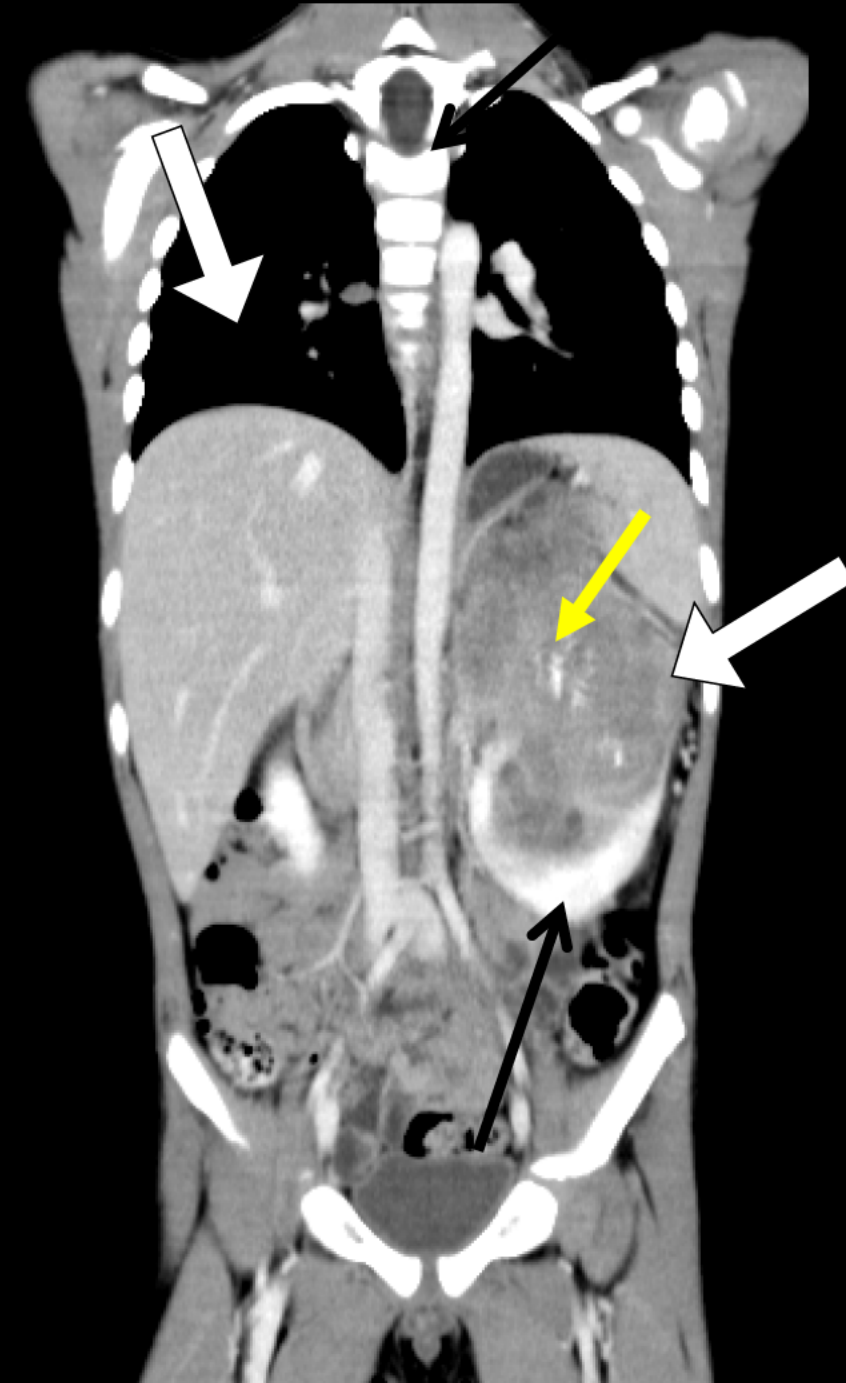
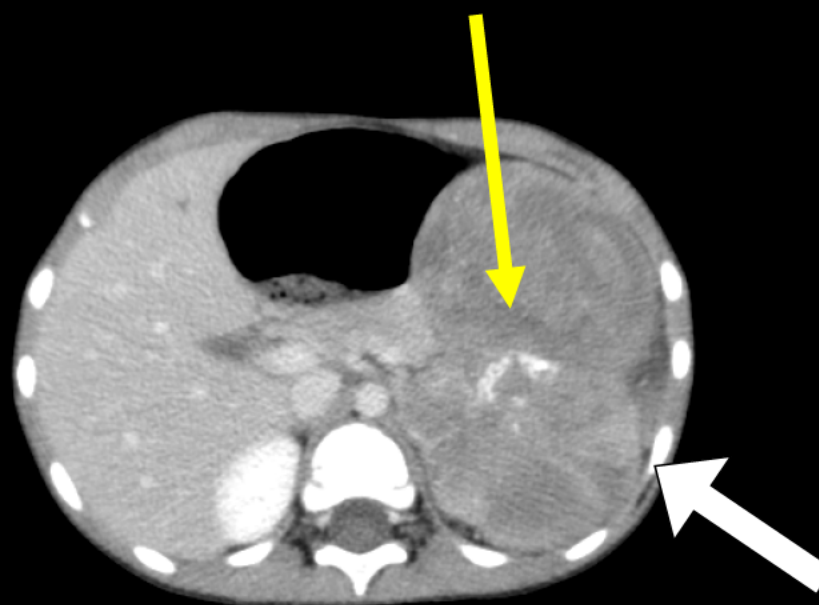
A PROGRAM OF THE
AMERICAN COLLEGE OF RADIOLOGY

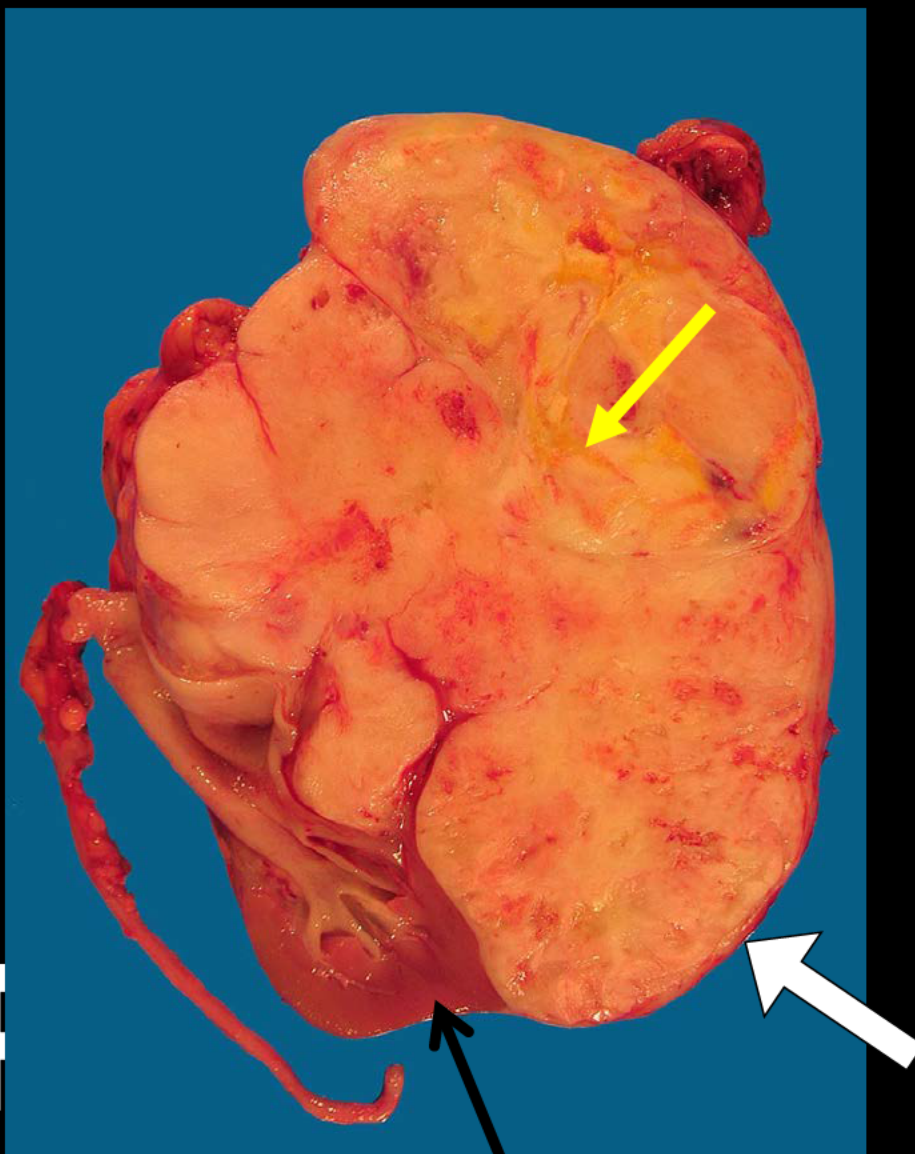


AIRPTM

AMERICAN INSTITUTE FOR
RADIOLOGIC PATHOLOGY

A PROGRAM OF THE
AMERICAN COLLEGE OF RADIOLOGY

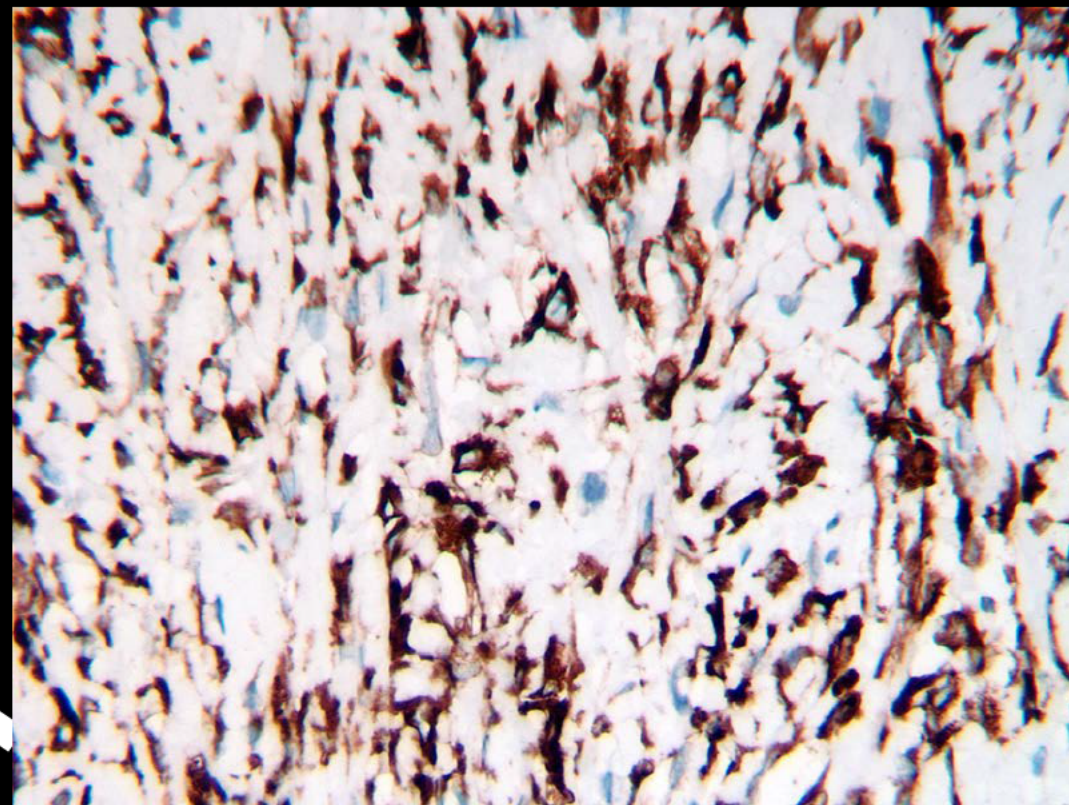




AIR

AMERICAN INSTITUTE
RADIOLOGIC PATHOLOGY

A PROGRAM OF THE
AMERICAN COLLEGE OF RADIOLOGY



Sclerosing epithelioid fibrosarcoma

Austin Starnes

Brookwood Baptist Health

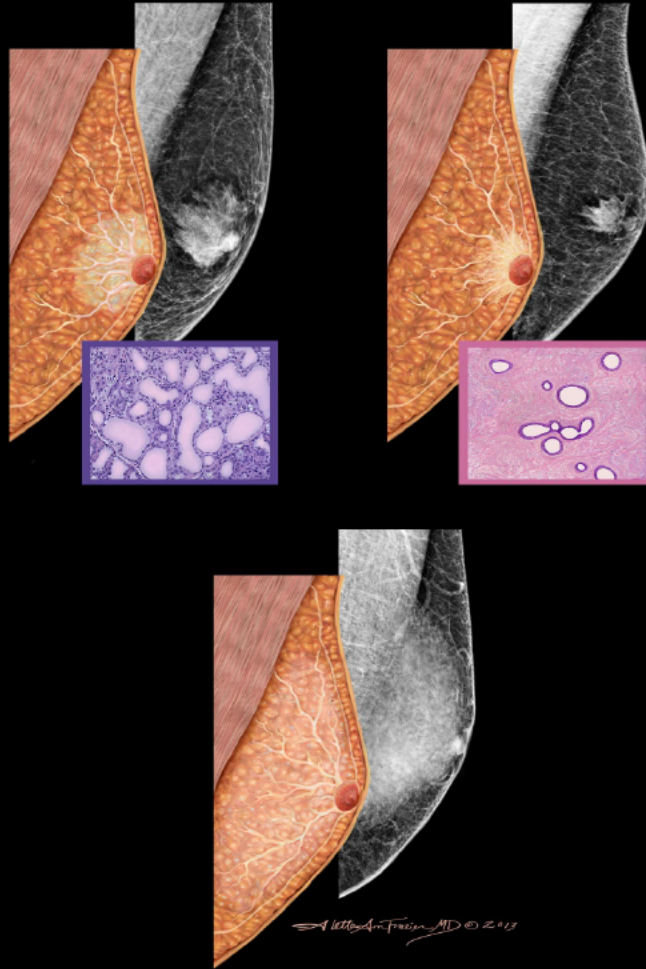
Birmingham, AL



**AMERICAN INSTITUTE FOR
RADIOLOGIC PATHOLOGY**

**A PROGRAM OF THE
AMERICAN COLLEGE OF RADIOLOGY**

Breast Best Case



AIRPTM

AMERICAN INSTITUTE FOR
RADIOLOGIC PATHOLOGY

A PROGRAM OF THE
AMERICAN COLLEGE OF RADIOLOGY

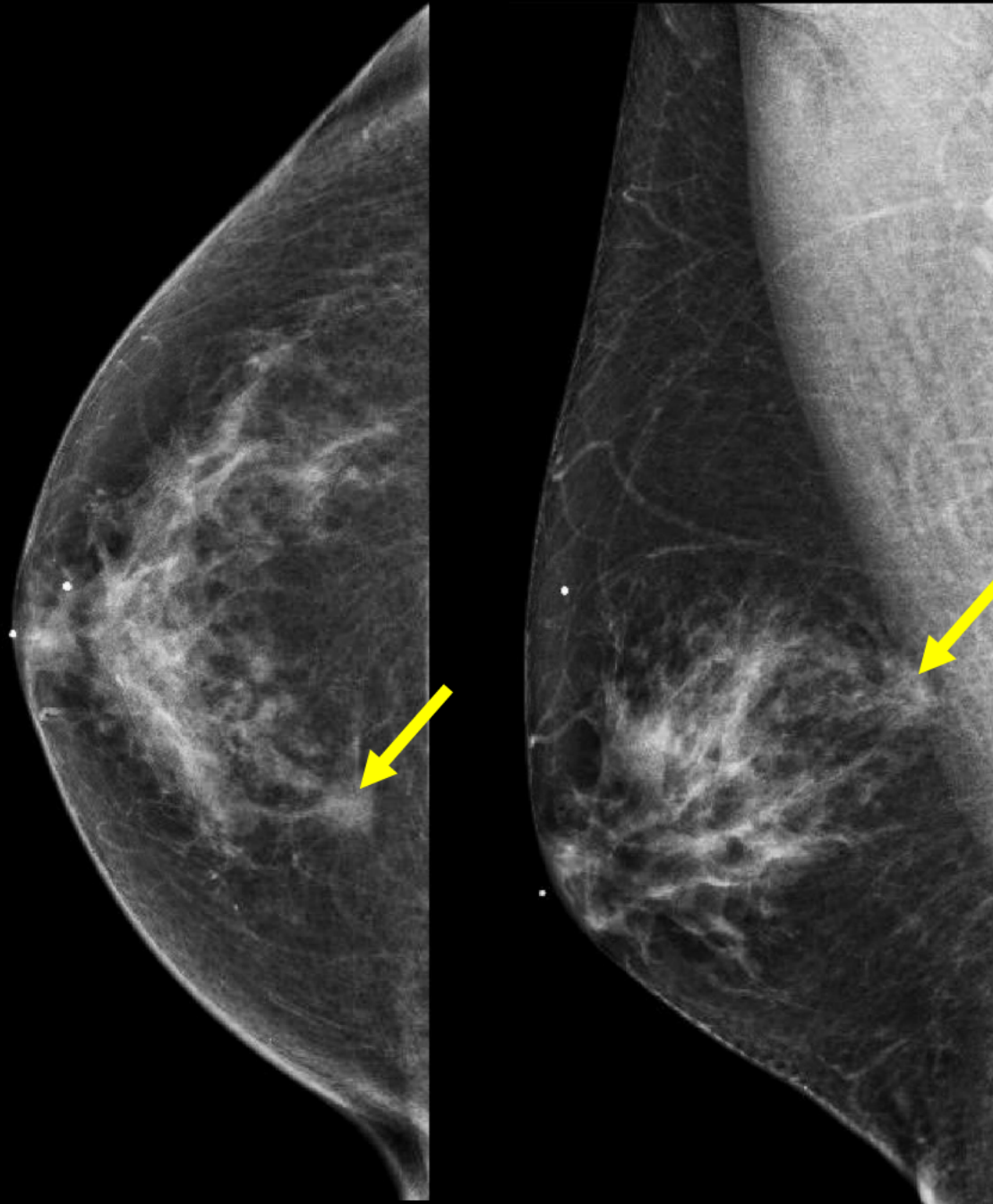
Clinical information

48-year-old male with a lump in the right breast. No family history of breast cancer.

AIRPTM

AMERICAN INSTITUTE FOR
RADIOLOGIC PATHOLOGY

A PROGRAM OF THE
AMERICAN COLLEGE OF RADIOLOGY



AIRPTM

AMERICAN INSTITUTE FOR
RADIOLOGIC PATHOLOGY

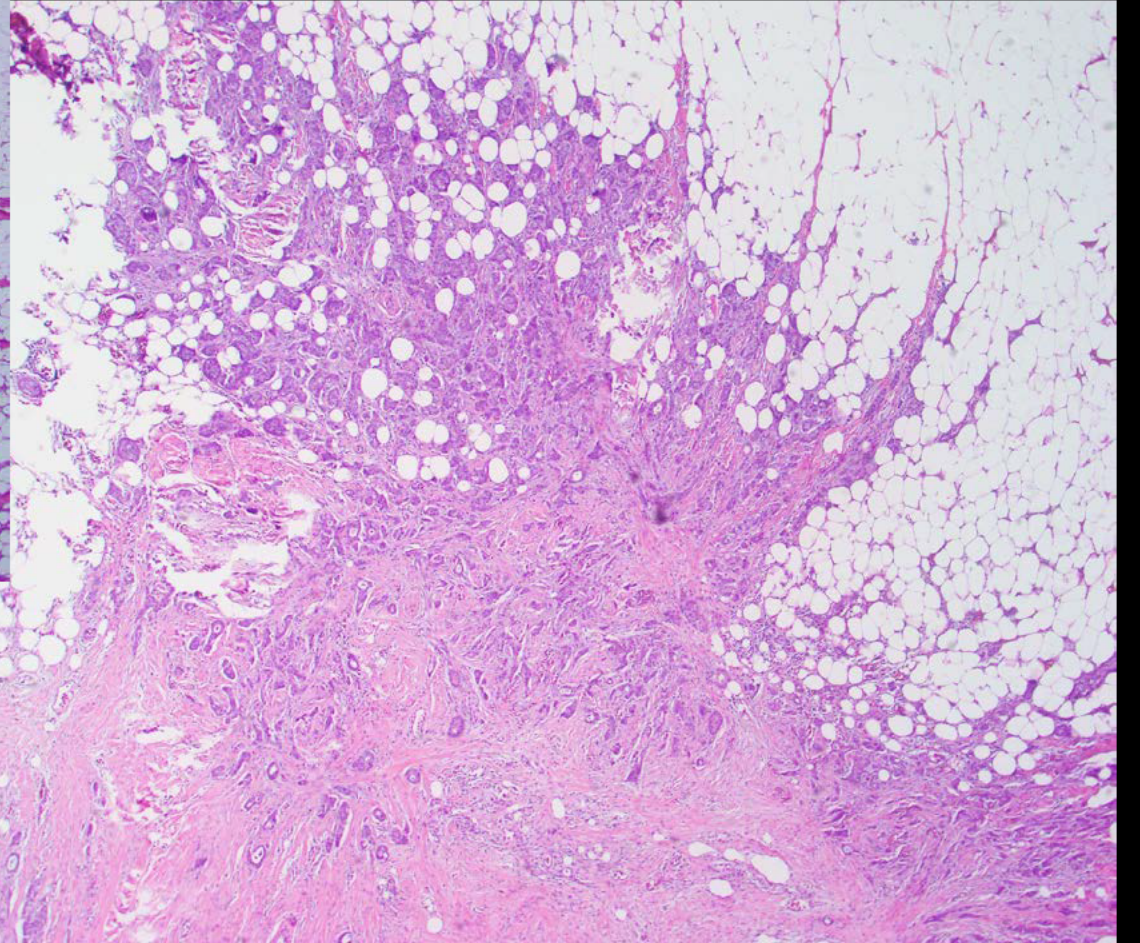
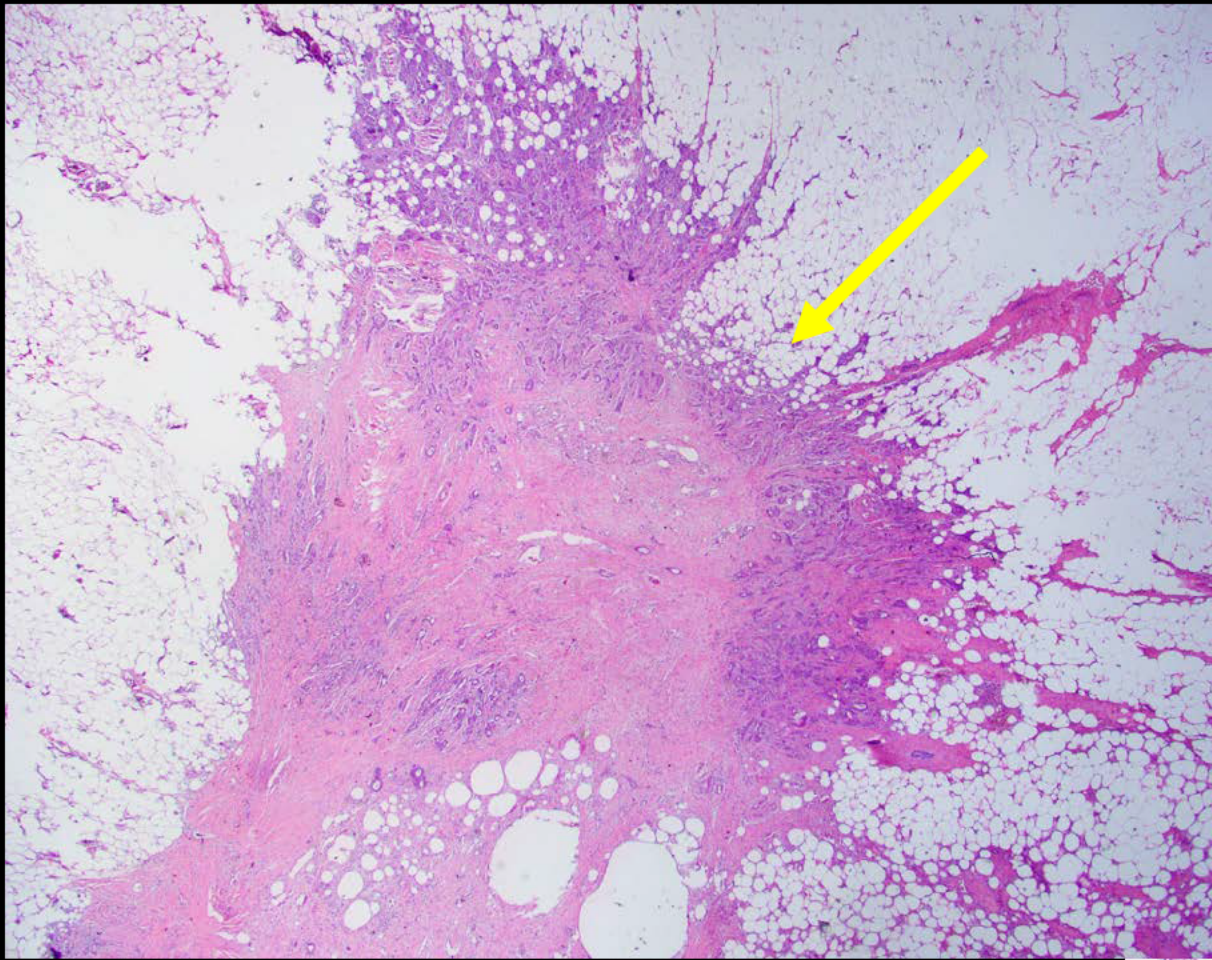
A PROGRAM OF THE
AMERICAN COLLEGE OF RADIOLOGY



AIRPTM

AMERICAN INSTITUTE FOR
RADIOLOGIC PATHOLOGY

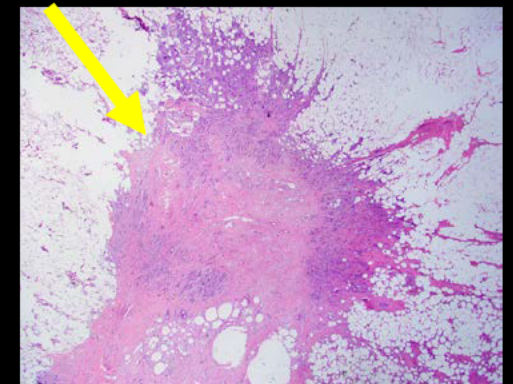
A PROGRAM OF THE
AMERICAN COLLEGE OF RADIOLOGY



AIRPTM

AMERICAN INSTITUTE FOR
RADIOLOGIC PATHOLOGY

A PROGRAM OF THE
AMERICAN COLLEGE OF RADIOLOGY



Invasive Ductal Carcinoma in a Male Patient

Evan Lieberman

Maimonides Medical Center

Brooklyn, NY

AIRPTM

AMERICAN INSTITUTE FOR
RADIOLOGIC PATHOLOGY

A PROGRAM OF THE
AMERICAN COLLEGE OF RADIOLOGY

Genitourinary Best Case



AIRP™

AMERICAN INSTITUTE FOR
RADIOLOGIC PATHOLOGY

A PROGRAM OF THE
AMERICAN COLLEGE OF RADIOLOGY

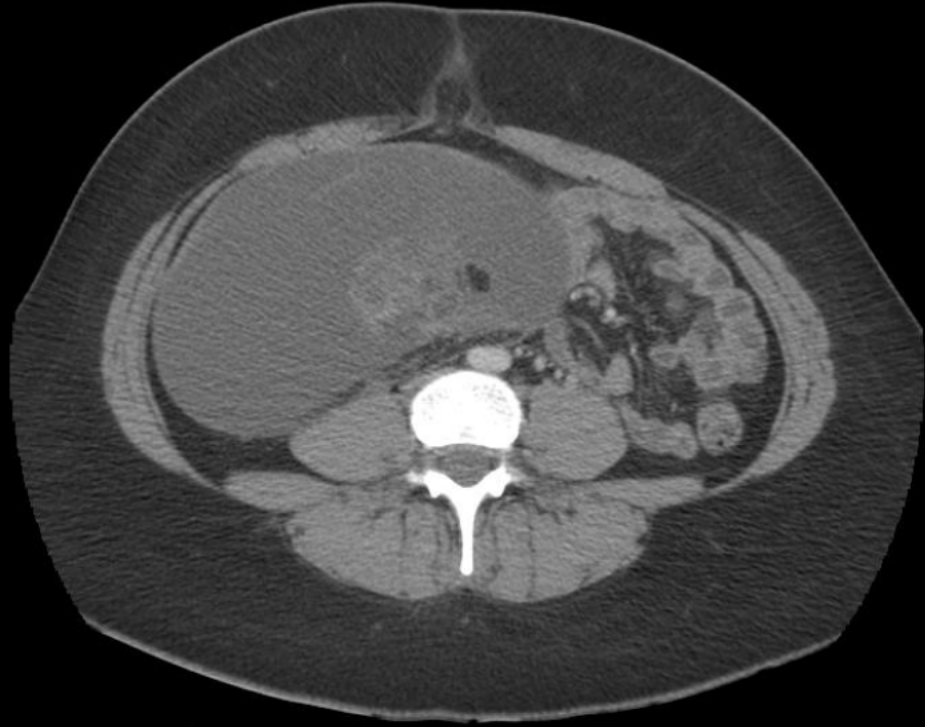
Clinical information

25 year old female consulted her gynecologist for abdominal discomfort. In the physical examination an abdominal mass was detected in the right hemiabdomen. The remaining physical examination was normal. Labs were normal.



AMERICAN INSTITUTE FOR
RADIOLOGIC PATHOLOGY

A PROGRAM OF THE
AMERICAN COLLEGE OF RADIOLOGY

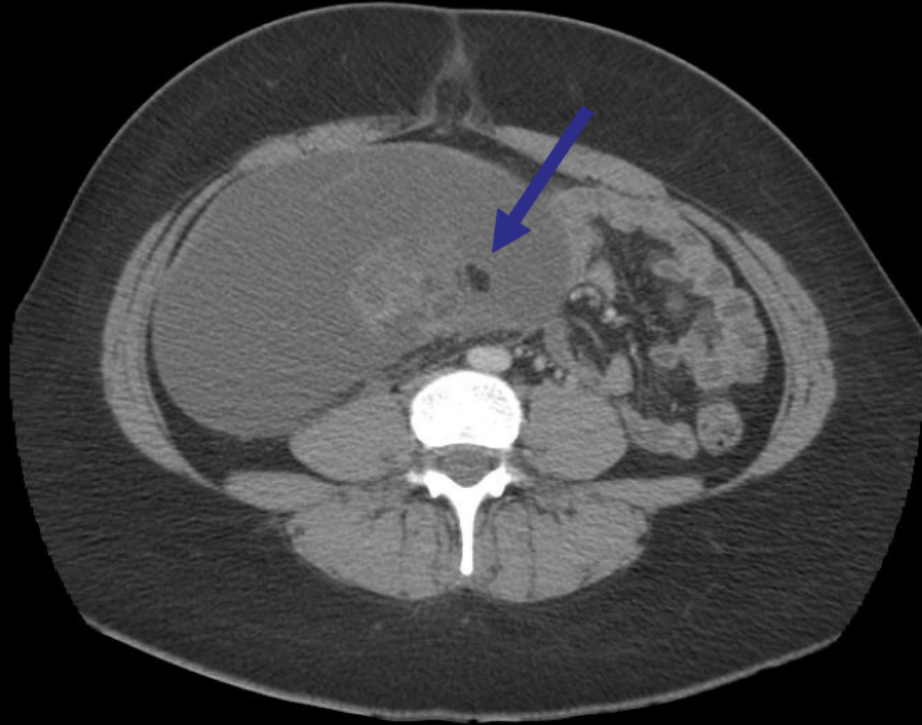


AIRPTM

AMERICAN INSTITUTE FOR
RADIOLOGIC PATHOLOGY

A PROGRAM OF THE
AMERICAN COLLEGE OF RADIOLOGY





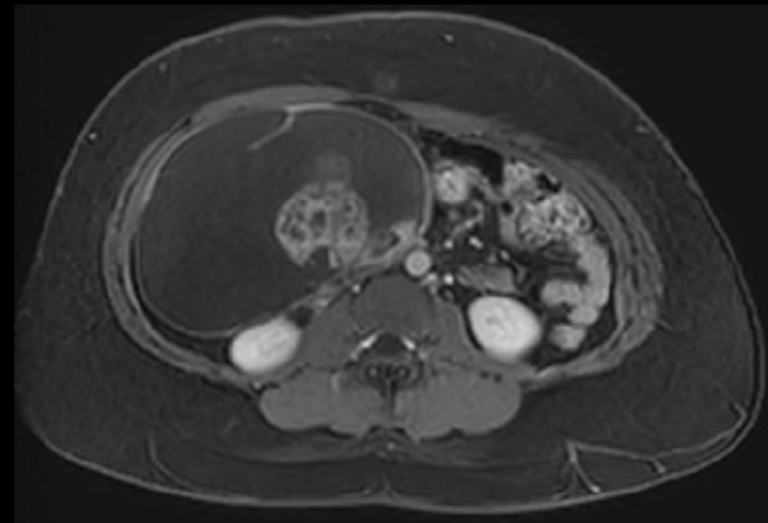
AIRPTM

AMERICAN INSTITUTE FOR
RADIOLOGIC PATHOLOGY

A PROGRAM OF THE
AMERICAN COLLEGE OF RADIOLOGY



Axial T1

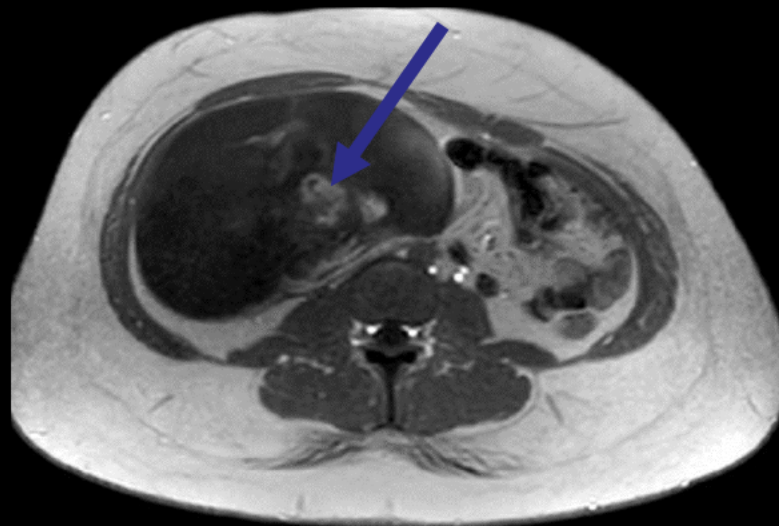


Axial T1 fat sat post

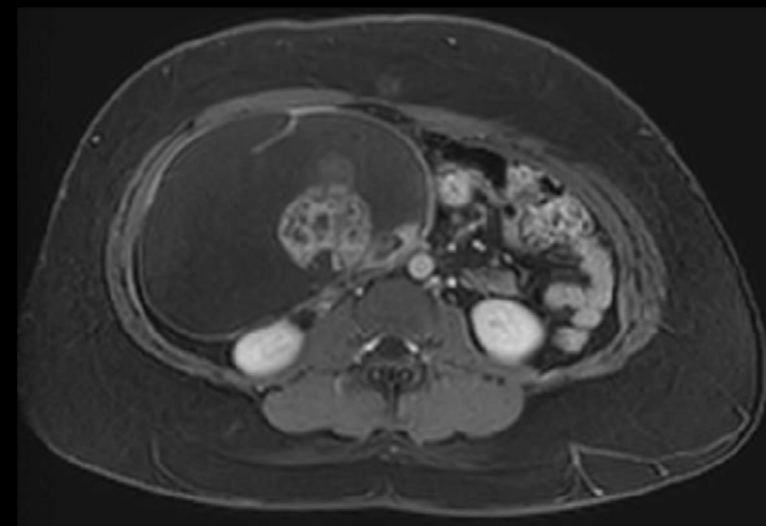
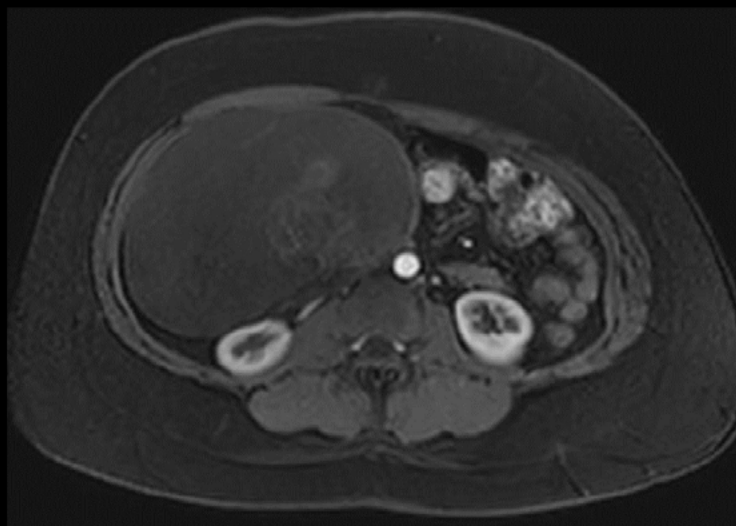
AIRPTM

AMERICAN INSTITUTE FOR
RADIOLOGIC PATHOLOGY

A PROGRAM OF THE
AMERICAN COLLEGE OF RADIOLOGY



Axial T1



Axial T1 fat sat post

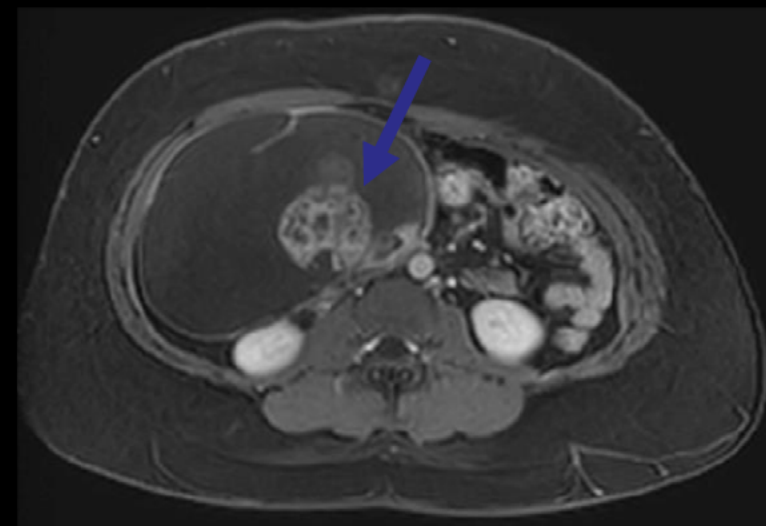
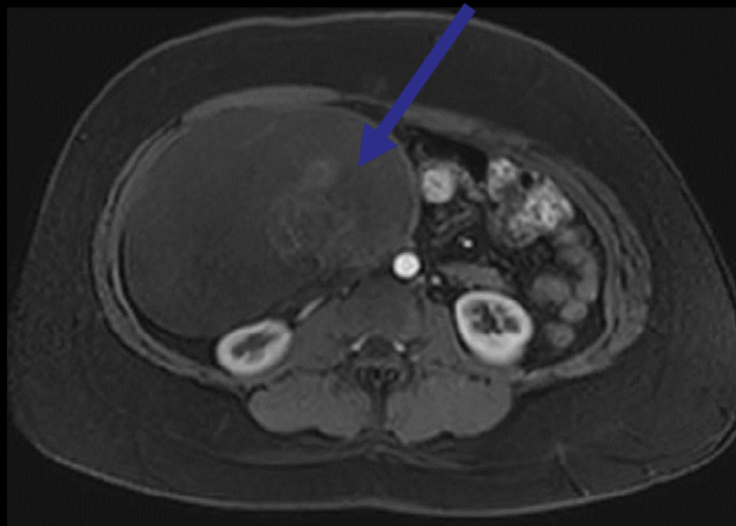
AIRPTM

AMERICAN INSTITUTE FOR
RADIOLOGIC PATHOLOGY

A PROGRAM OF THE
AMERICAN COLLEGE OF RADIOLOGY



Axial T1



Axial T1 fat sat post

AIRPTM

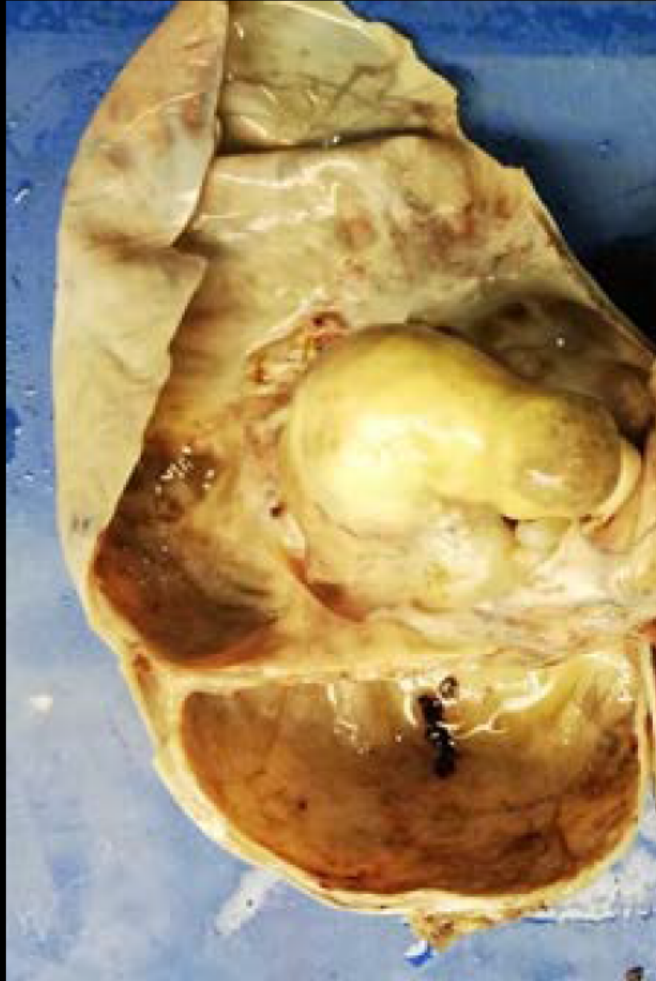
AMERICAN INSTITUTE FOR
RADIOLOGIC PATHOLOGY

A PROGRAM OF THE
AMERICAN COLLEGE OF RADIOLOGY

AIRPTM

AMERICAN INSTITUTE FOR
RADIOLOGIC PATHOLOGY

A PROGRAM OF THE
AMERICAN COLLEGE OF RADIOLOGY

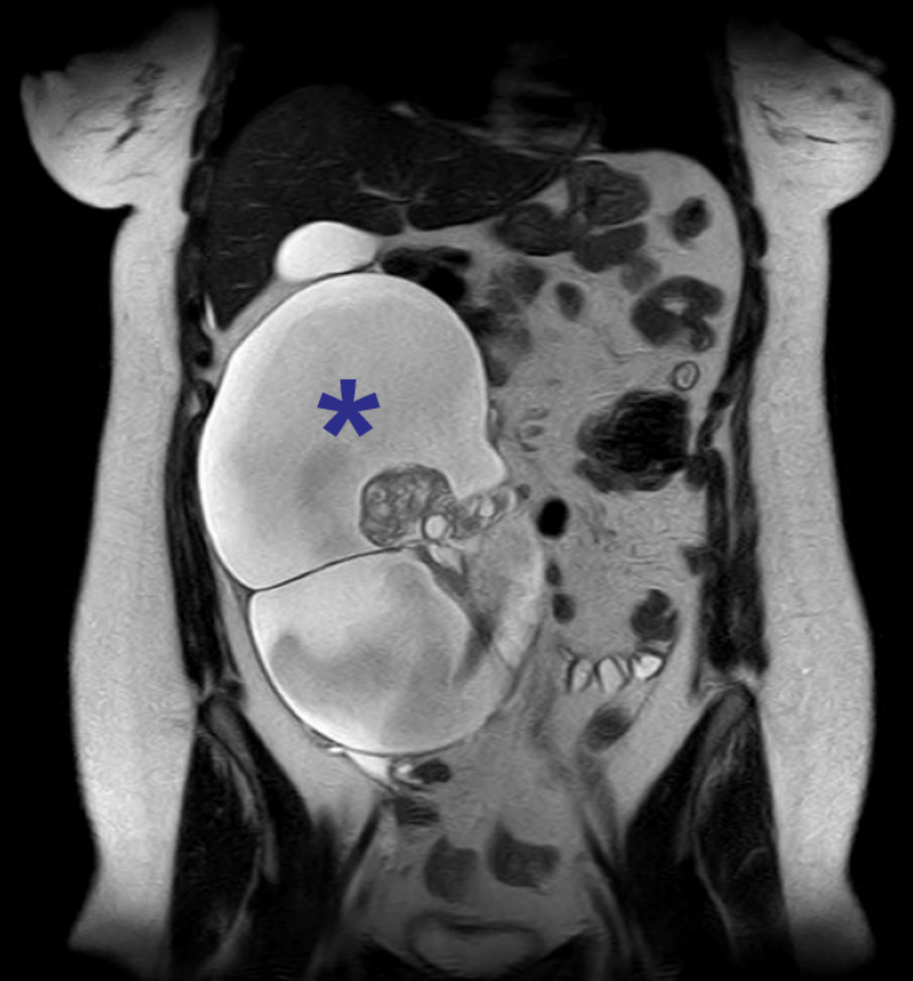
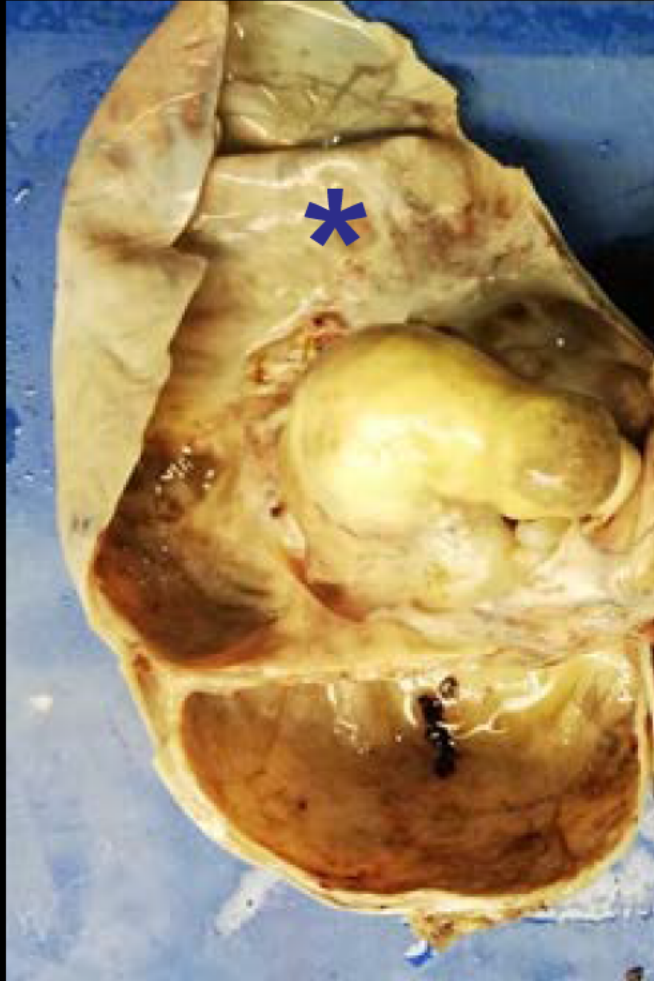


Coronal T2

AIRPTM

AMERICAN INSTITUTE FOR
RADIOLOGIC PATHOLOGY

A PROGRAM OF THE
AMERICAN COLLEGE OF RADIOLOGY



Coronal T2

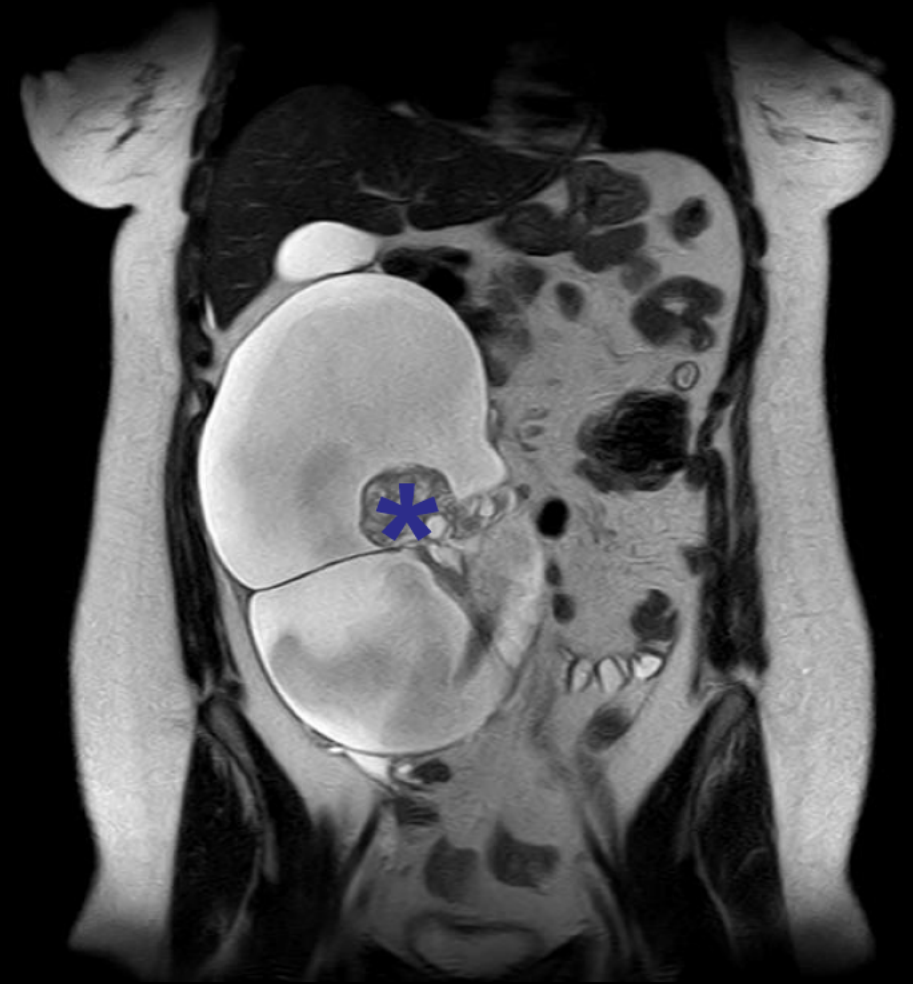


Coronal T2

AIRPTM

AMERICAN INSTITUTE FOR
RADIOLOGIC PATHOLOGY

A PROGRAM OF THE
AMERICAN COLLEGE OF RADIOLOGY

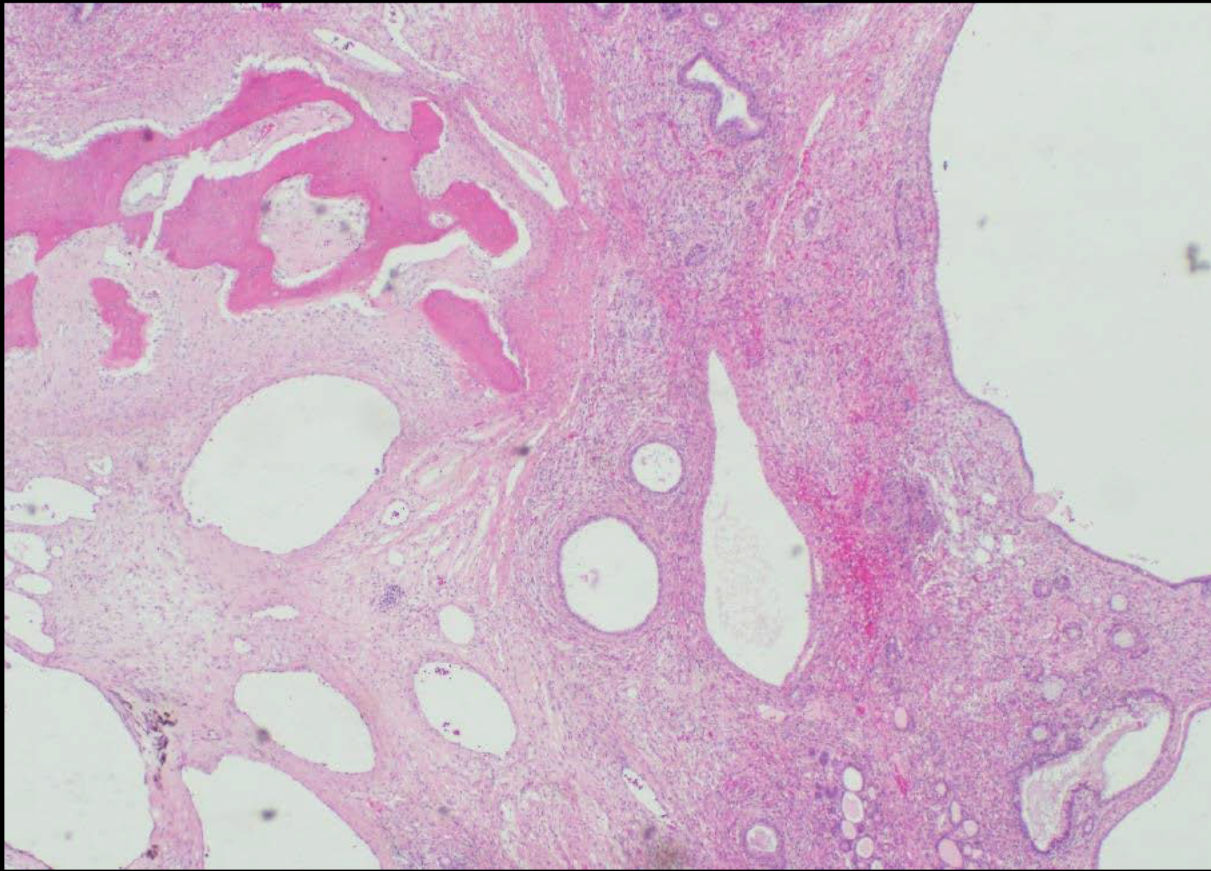


Coronal T2

AIRPTM

AMERICAN INSTITUTE FOR
RADIOLOGIC PATHOLOGY

A PROGRAM OF THE
AMERICAN COLLEGE OF RADIOLOGY



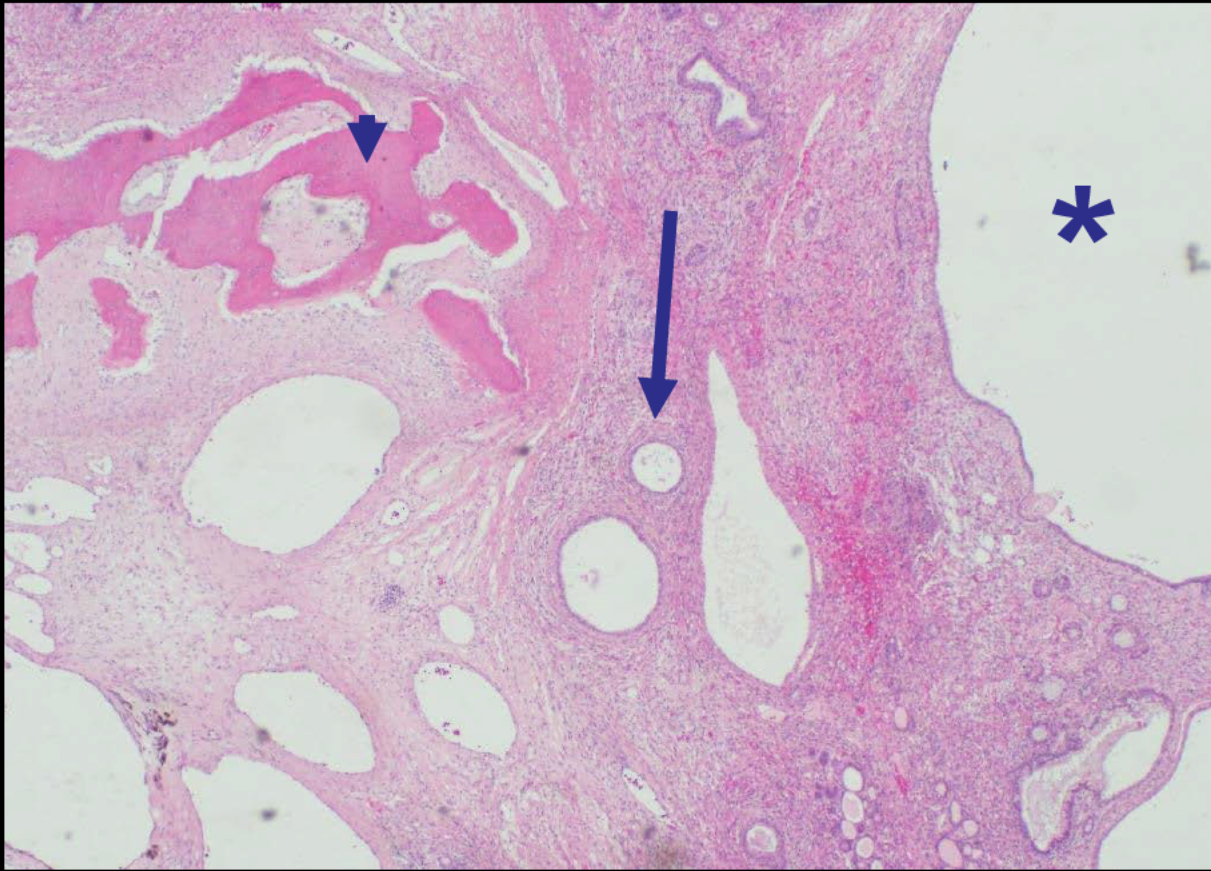
AIRPTM

AMERICAN INSTITUTE FOR
RADIOLOGIC PATHOLOGY

A PROGRAM OF THE
AMERICAN COLLEGE OF RADIOLOGY



Coronal T2

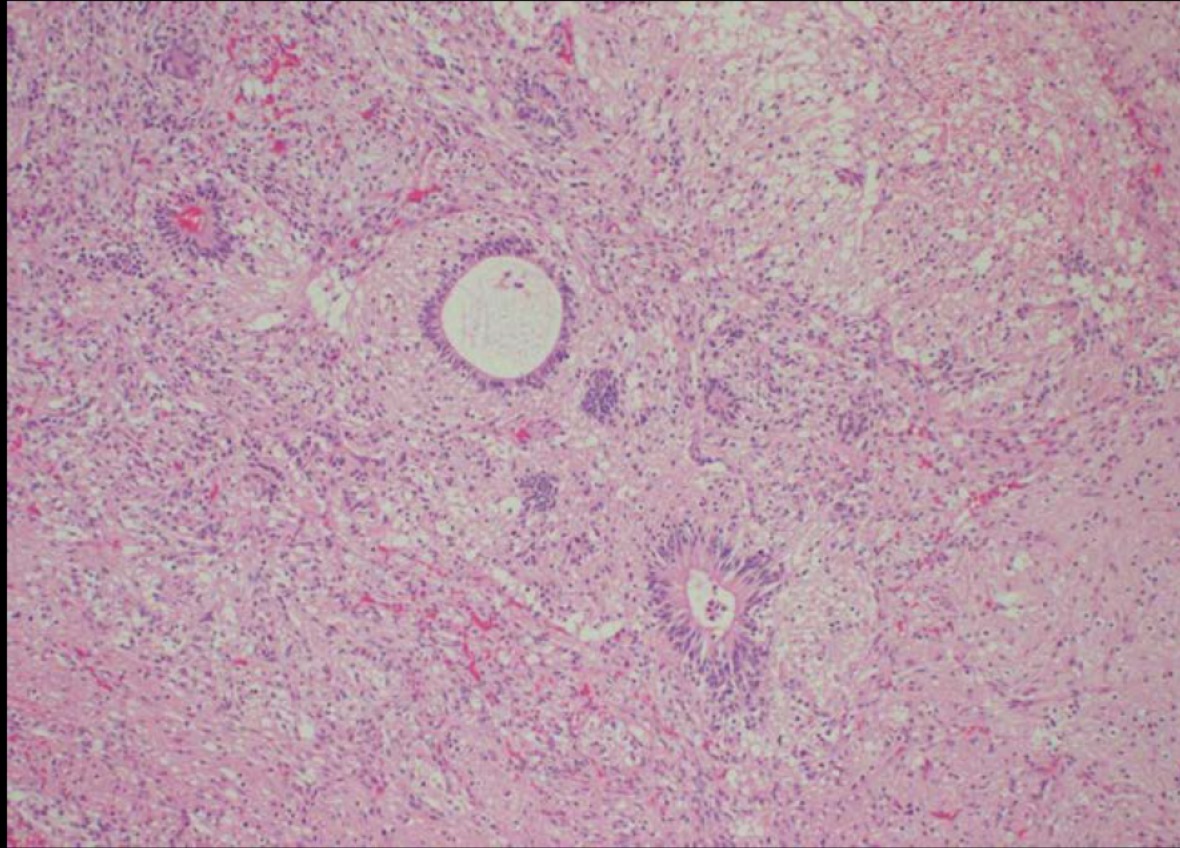


Coronal T2

AIRPTM

AMERICAN INSTITUTE FOR
RADIOLOGIC PATHOLOGY

A PROGRAM OF THE
AMERICAN COLLEGE OF RADIOLOGY



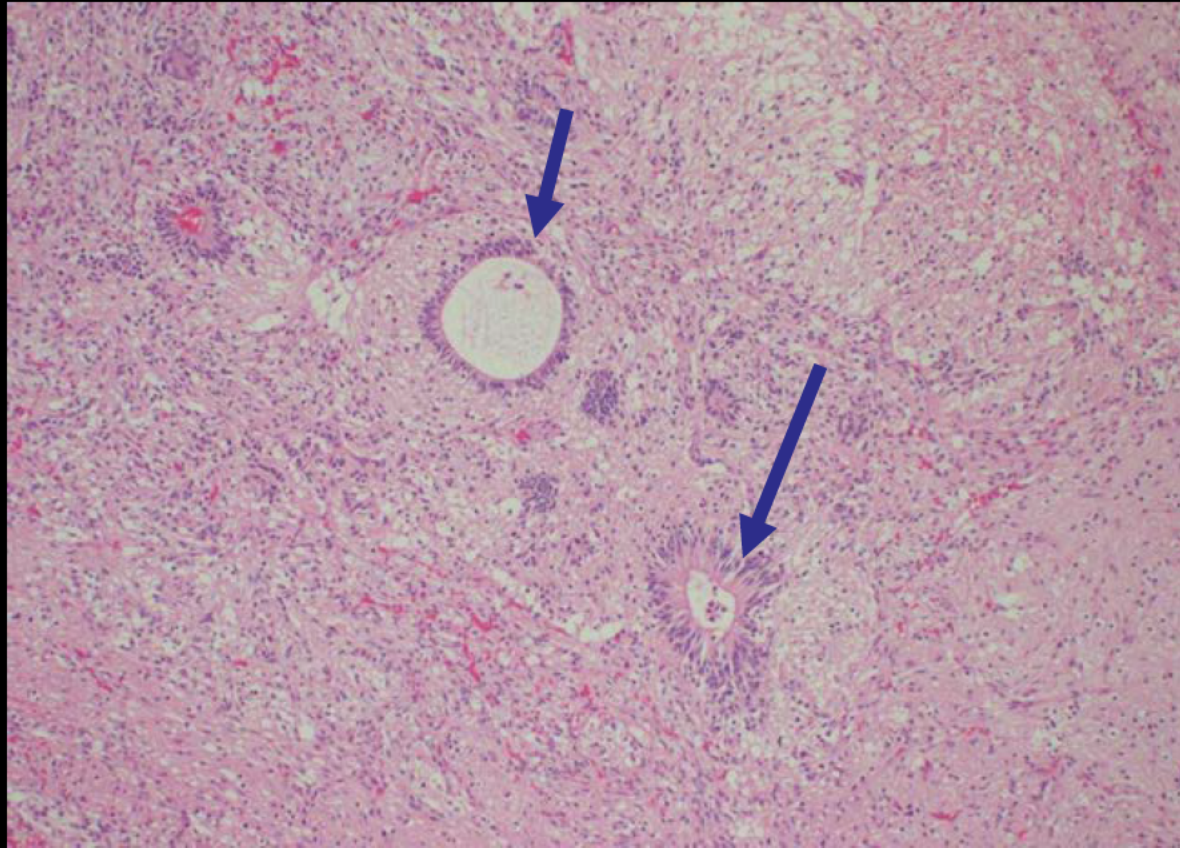
AIRPTM

AMERICAN INSTITUTE FOR
RADIOLOGIC PATHOLOGY

A PROGRAM OF THE
AMERICAN COLLEGE OF RADIOLOGY



Coronal T2



AIRPTM

AMERICAN INSTITUTE FOR
RADIOLOGIC PATHOLOGY

A PROGRAM OF THE
AMERICAN COLLEGE OF RADIOLOGY



Coronal T2

Ovarian Immature Teratoma

Eduardo Siña, MD

Clínica Dávila

Santiago, Chile



AMERICAN INSTITUTE FOR
RADIOLOGIC PATHOLOGY

A PROGRAM OF THE
AMERICAN COLLEGE OF RADIOLOGY