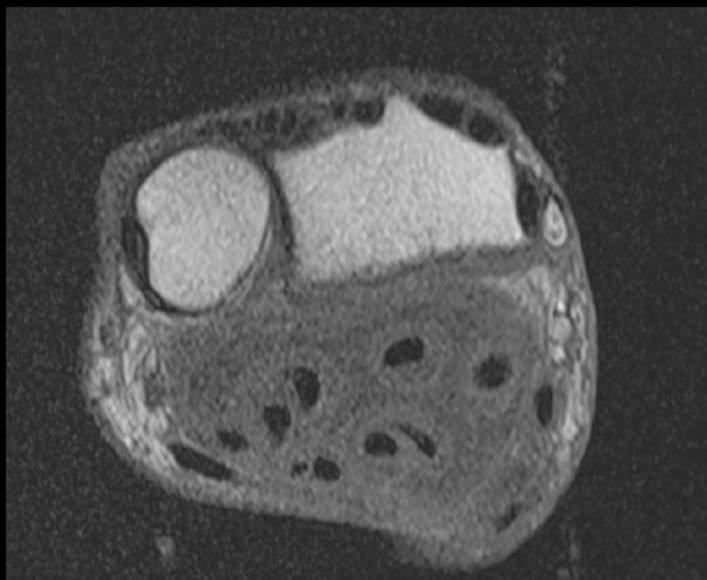


Best Cases of the AIRP

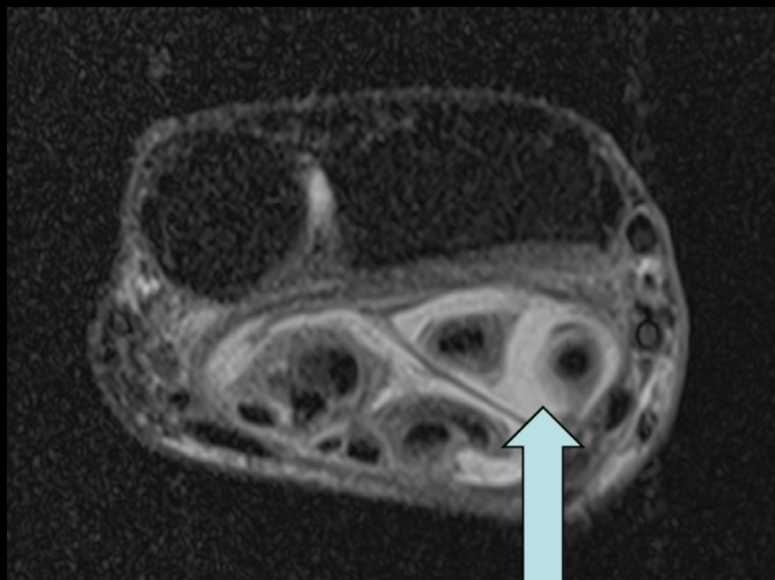
October 14 – November 8, 2013

Musculoskeletal Best Case

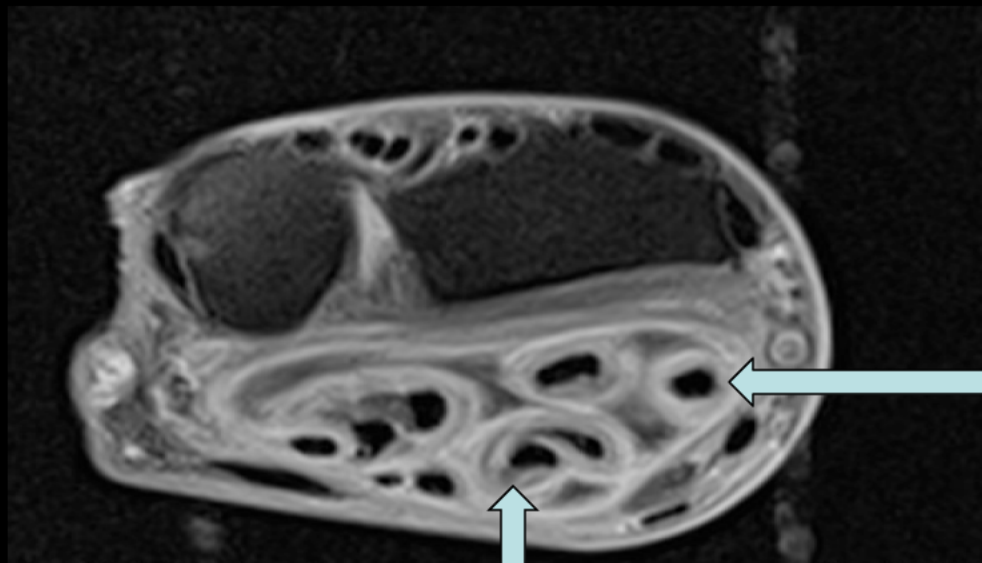
64-year-old woman with chronic right wrist pain.



T1



STIR



T1PGFS

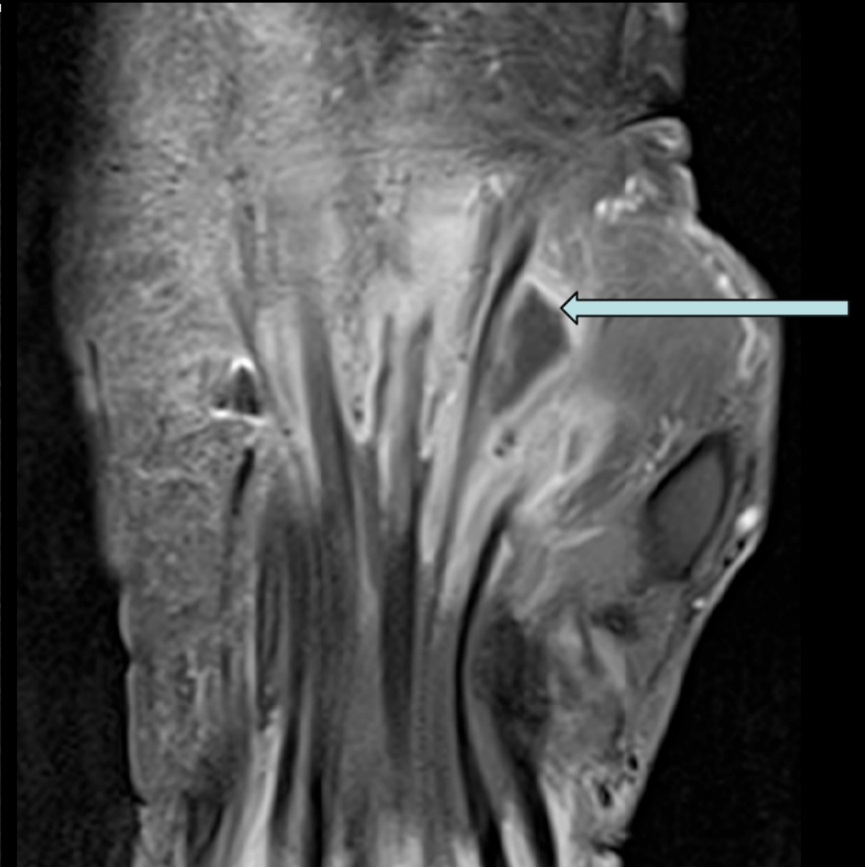
Note lack of flexor retinaculum



Sag STIR



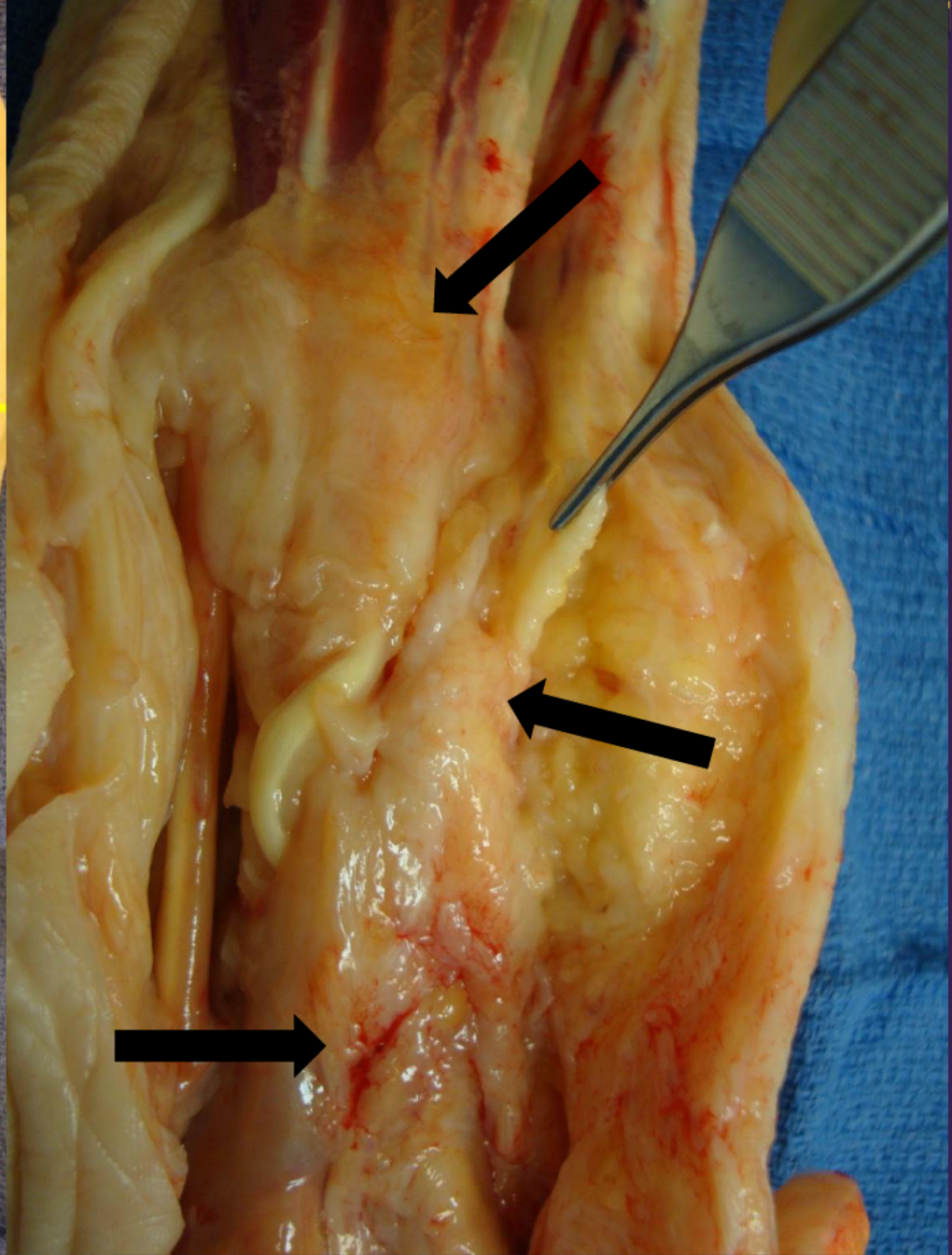
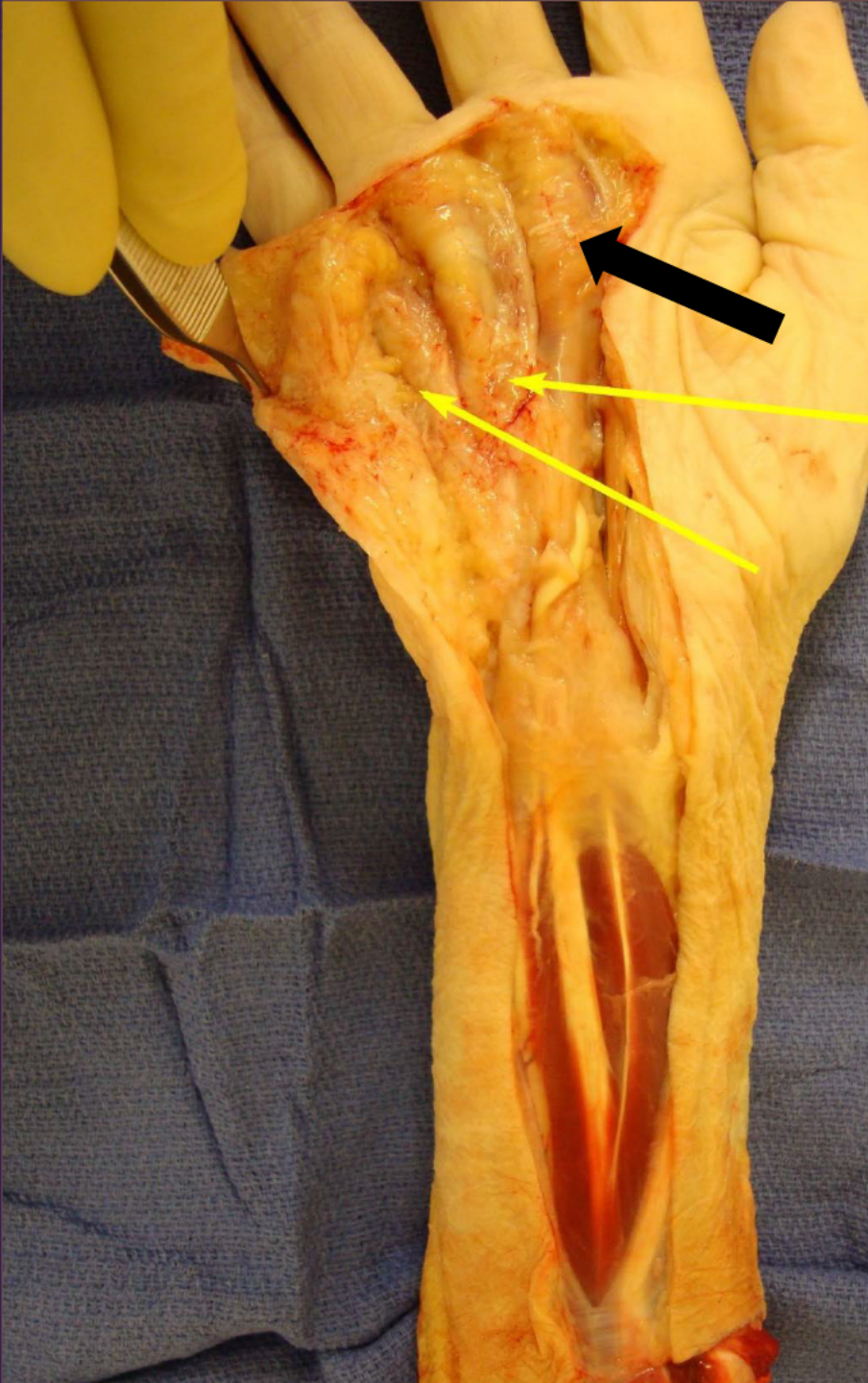
Cor T1 PGFS

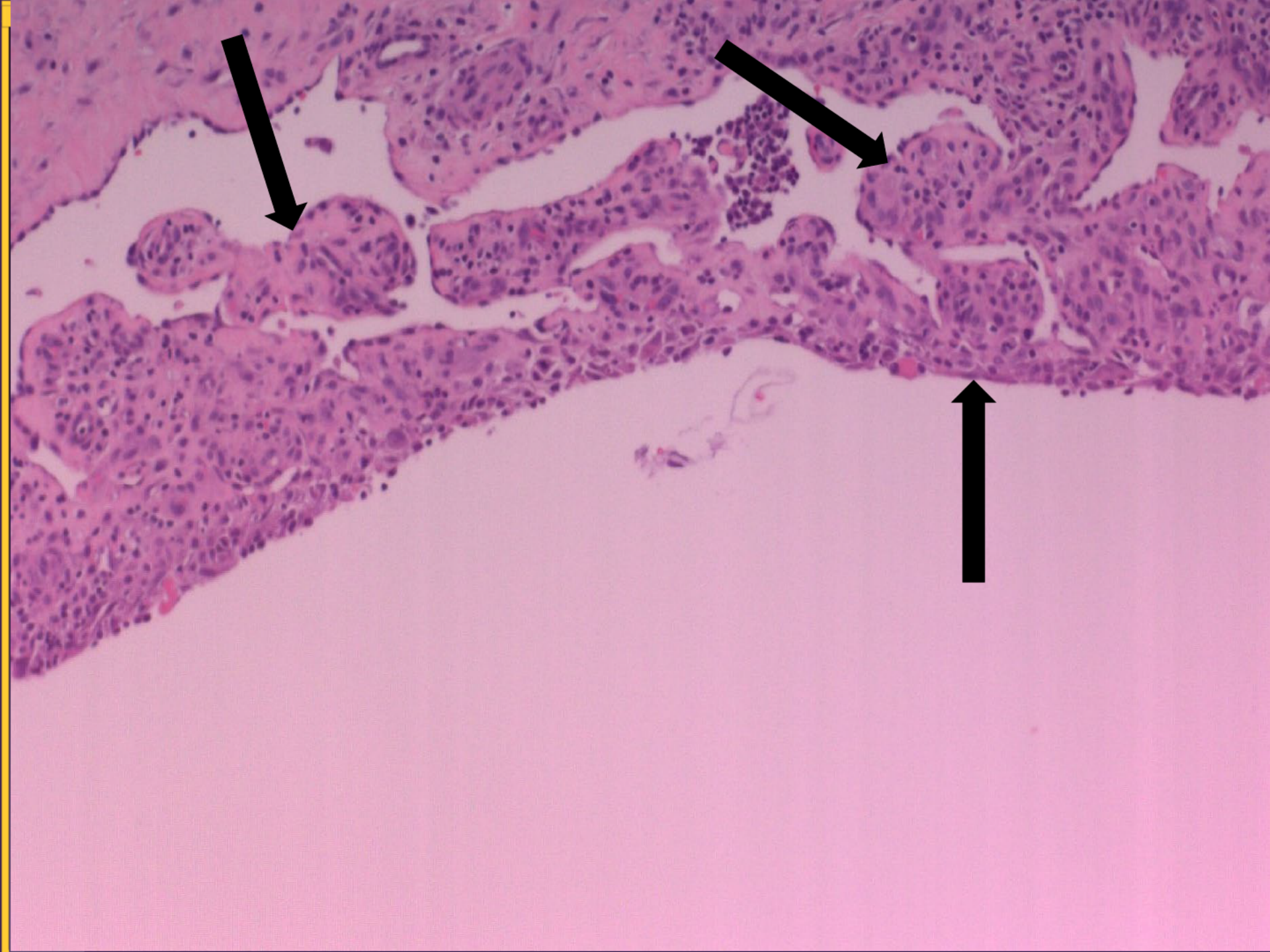


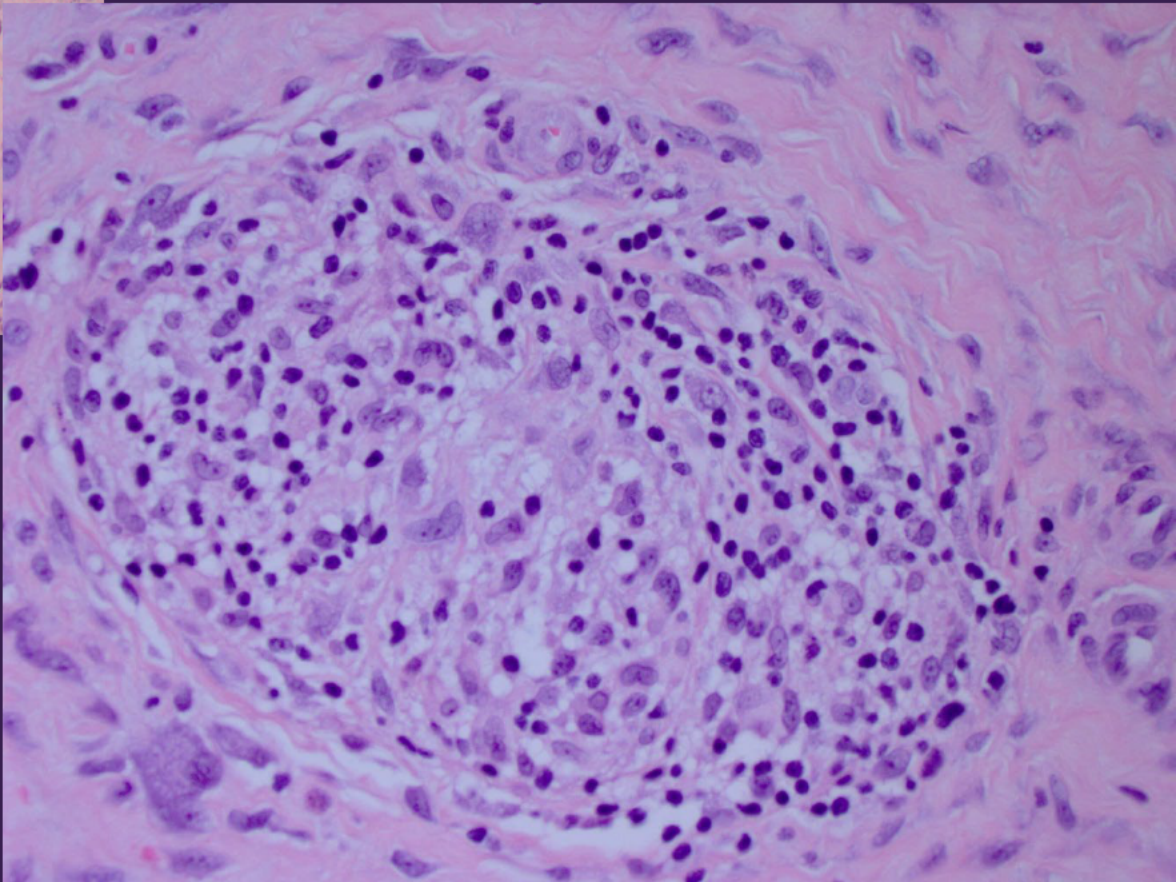
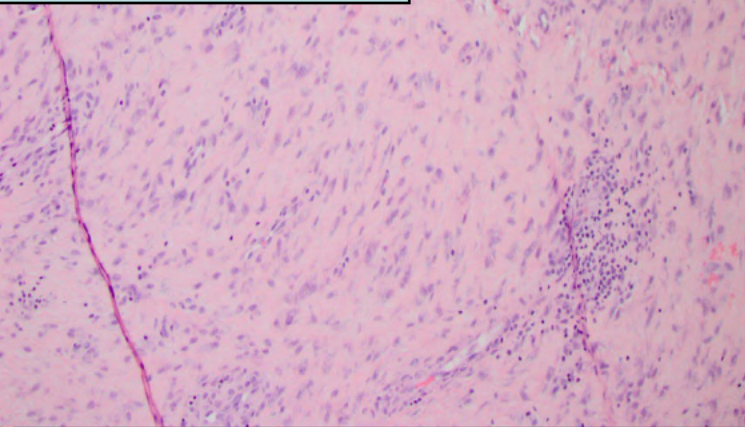
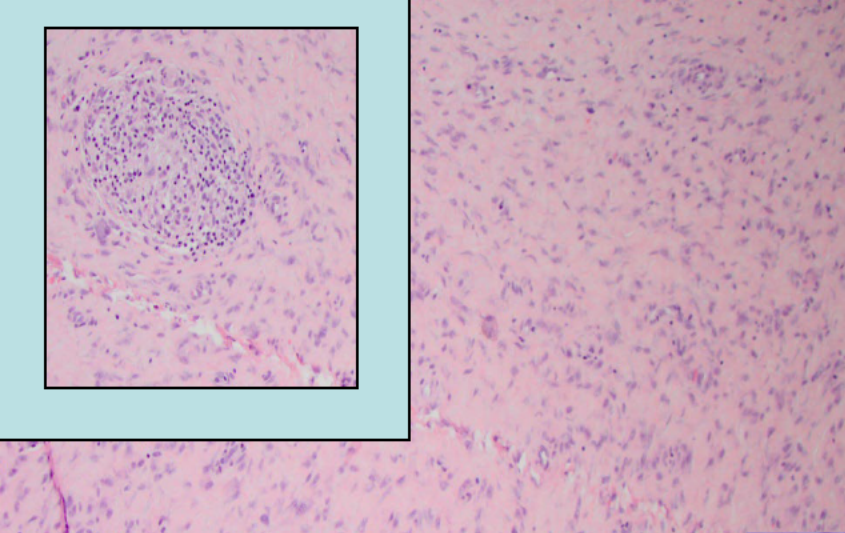
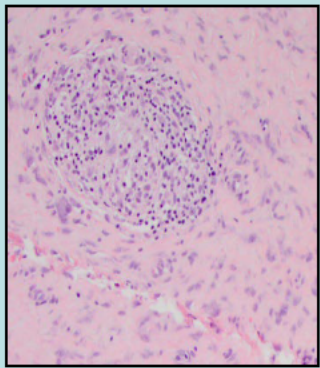
Note lack of erosive changes or joint involvement



T1







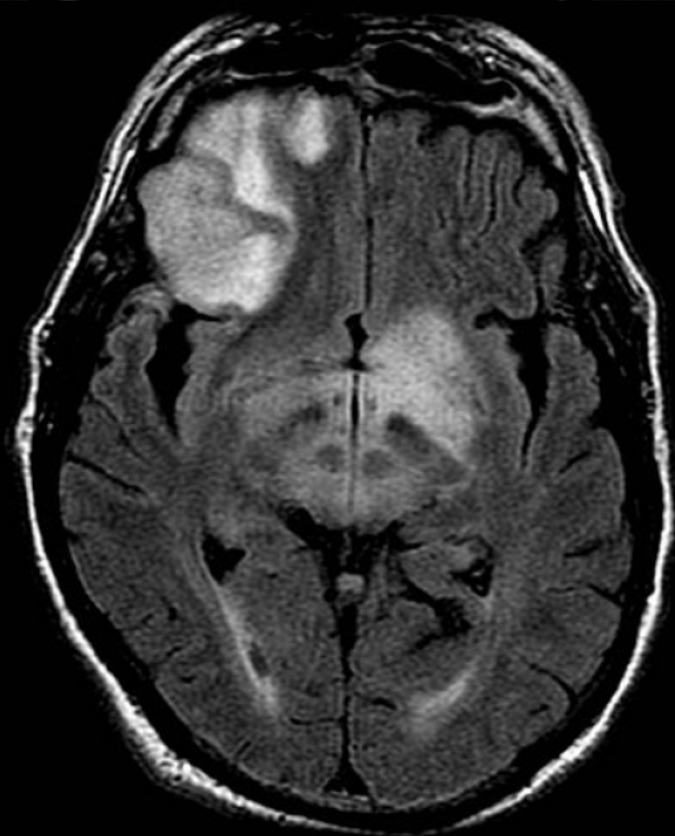
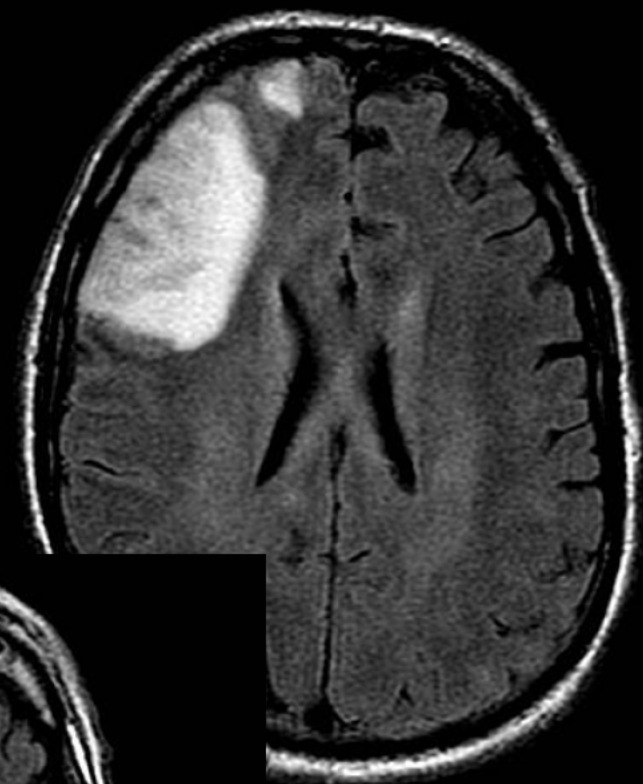
Atypical Mycobacterial Tenosynovitis of the Forearm and Wrist (*Mycobacterium fortuitum*)

Daniel Wells, MD

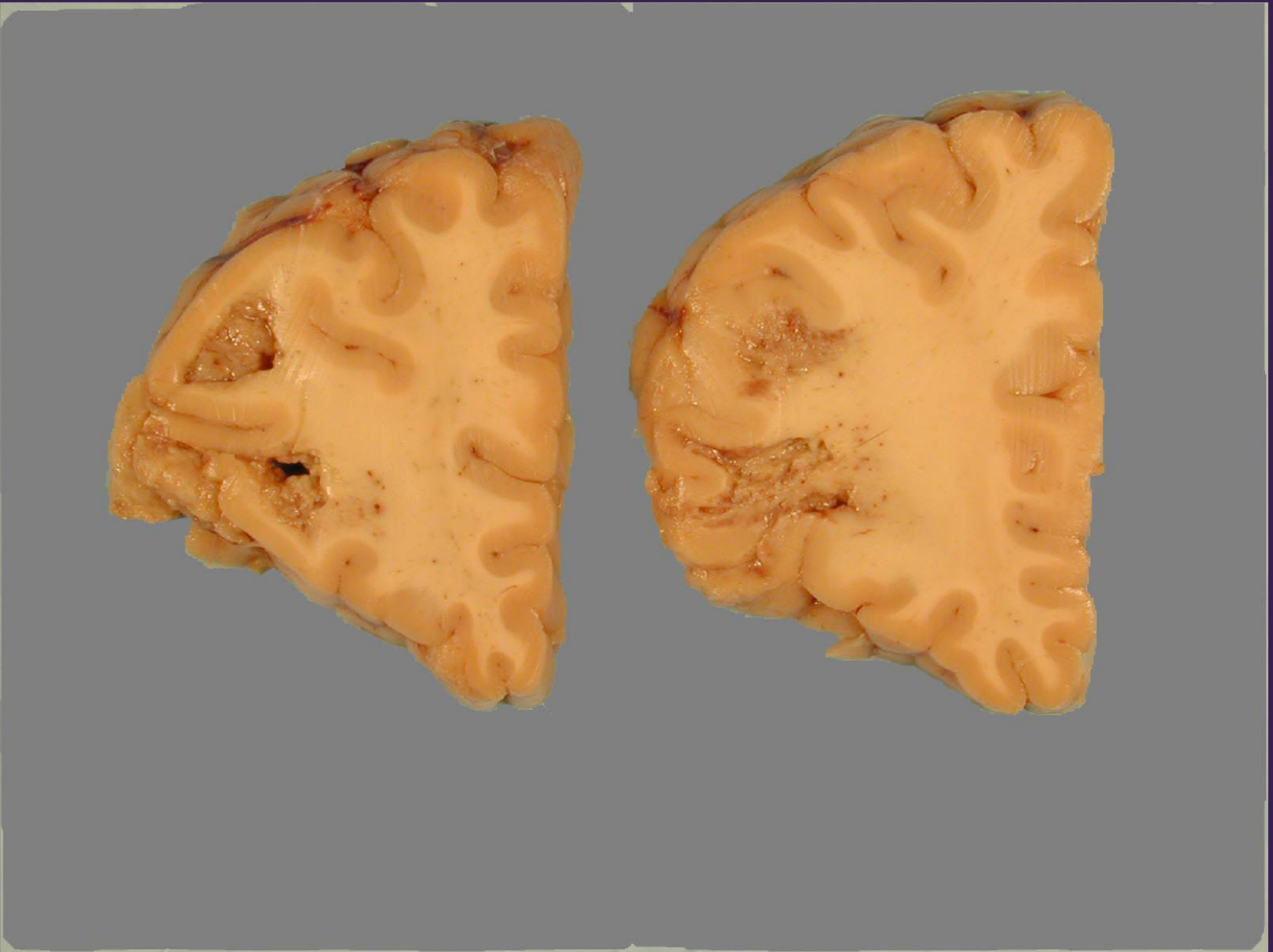
University of Colorado Health Sciences Center
Denver, Colorado

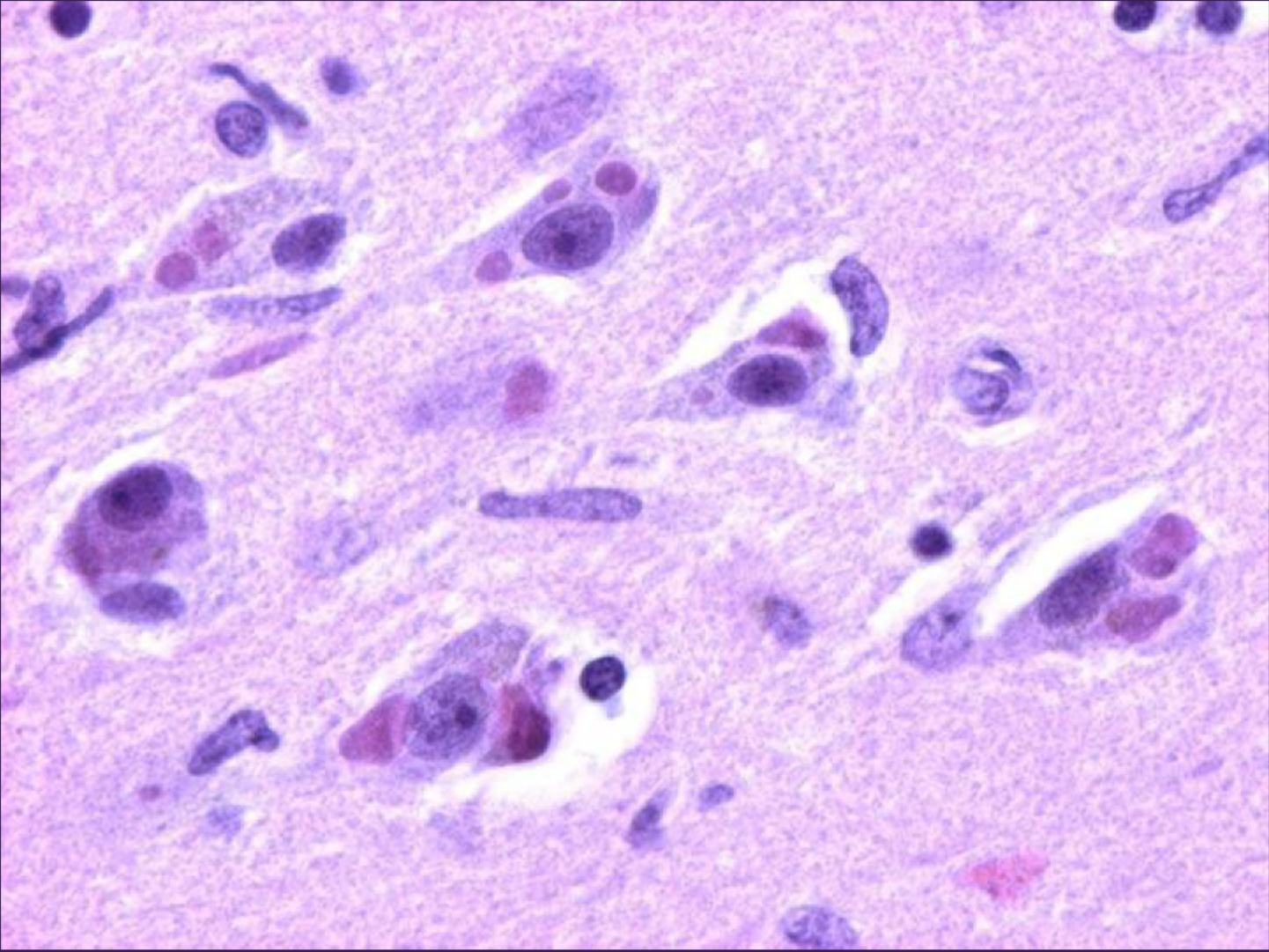
Neuroradiology Best Case

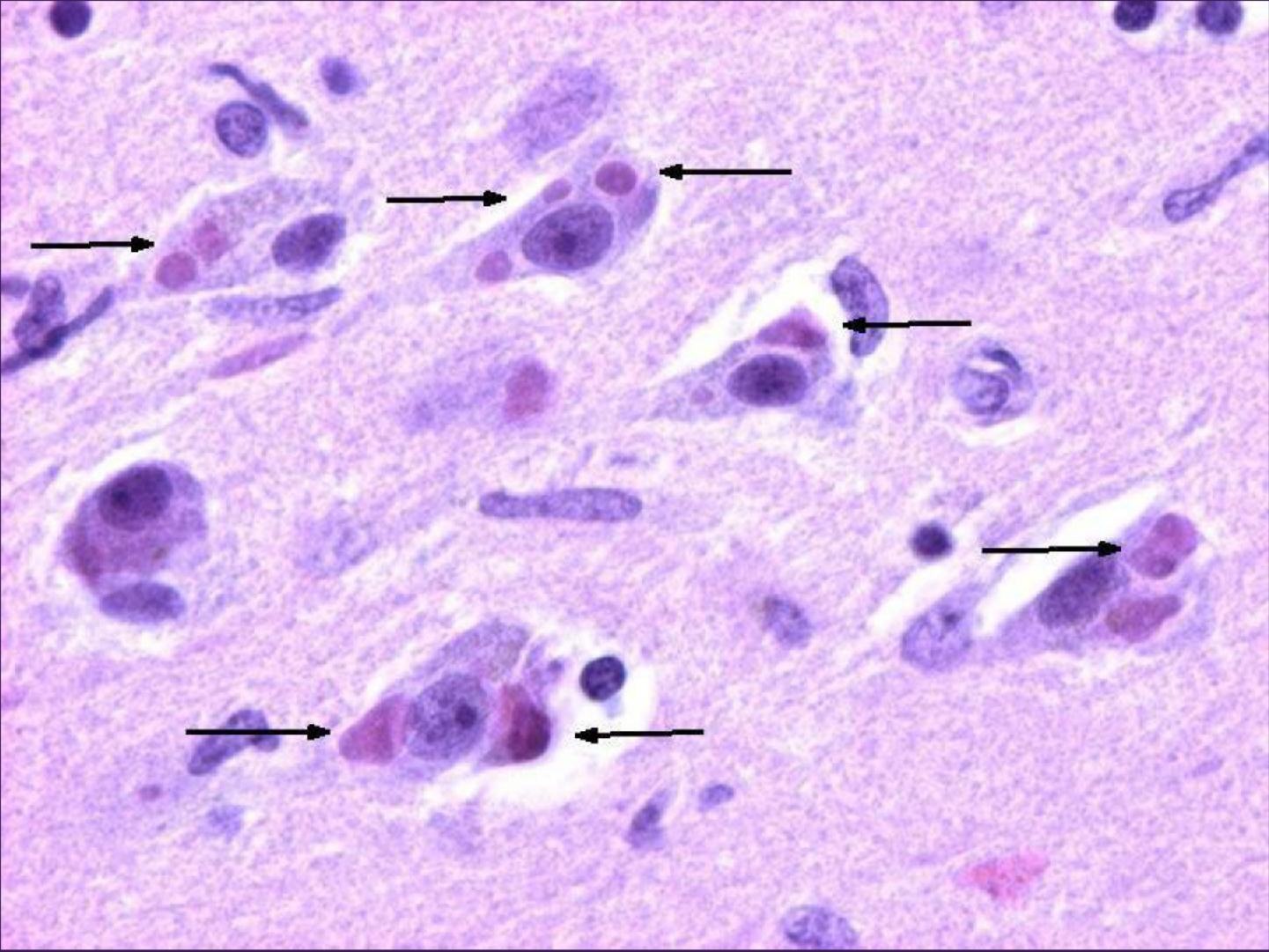
52-year-old man unable to move left arm
with subsequent rapidly progressive
weakness of lower extremities and eventual
generalized plegia of peripheral and
cranial nerves.



Axial FLAIR
images





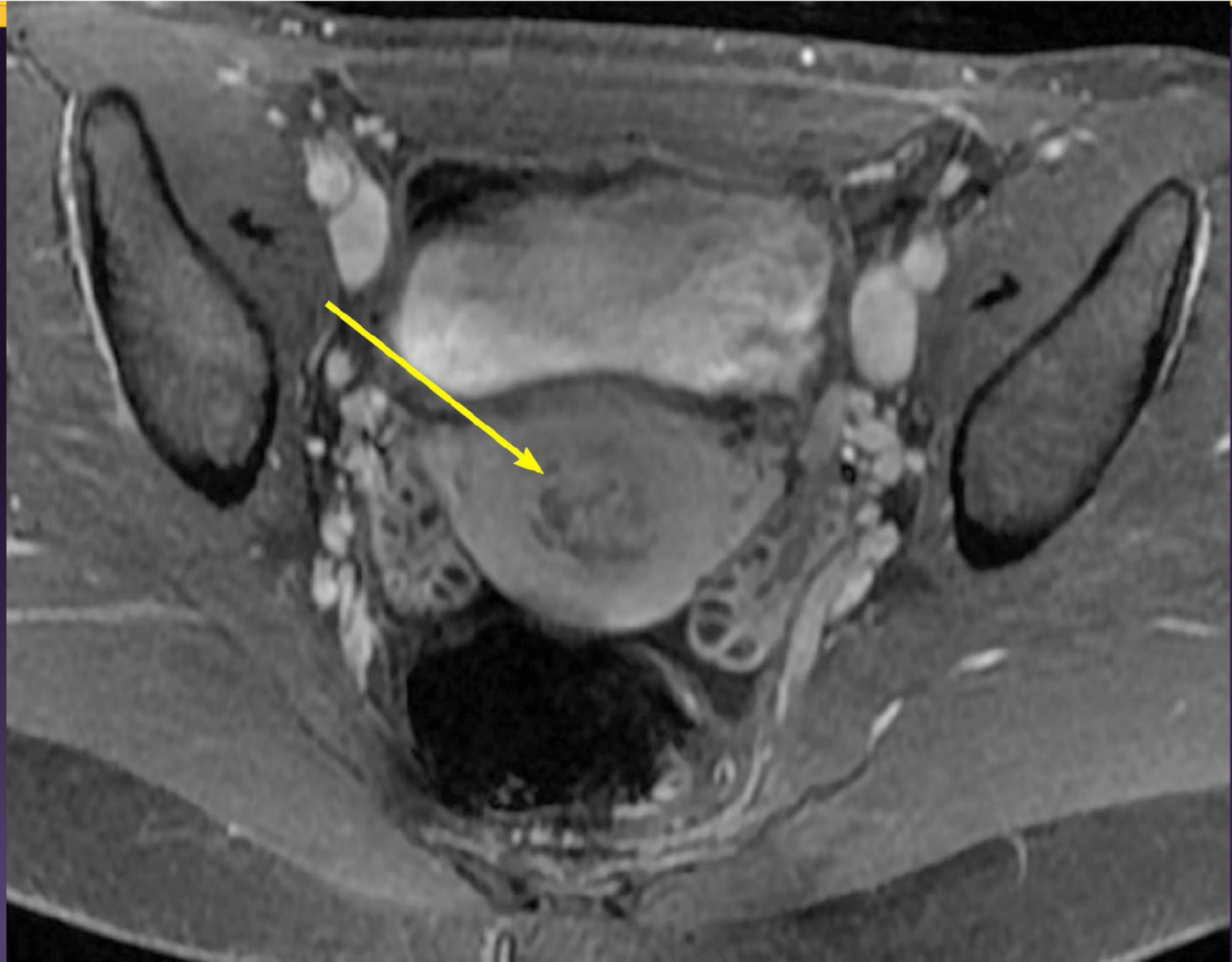


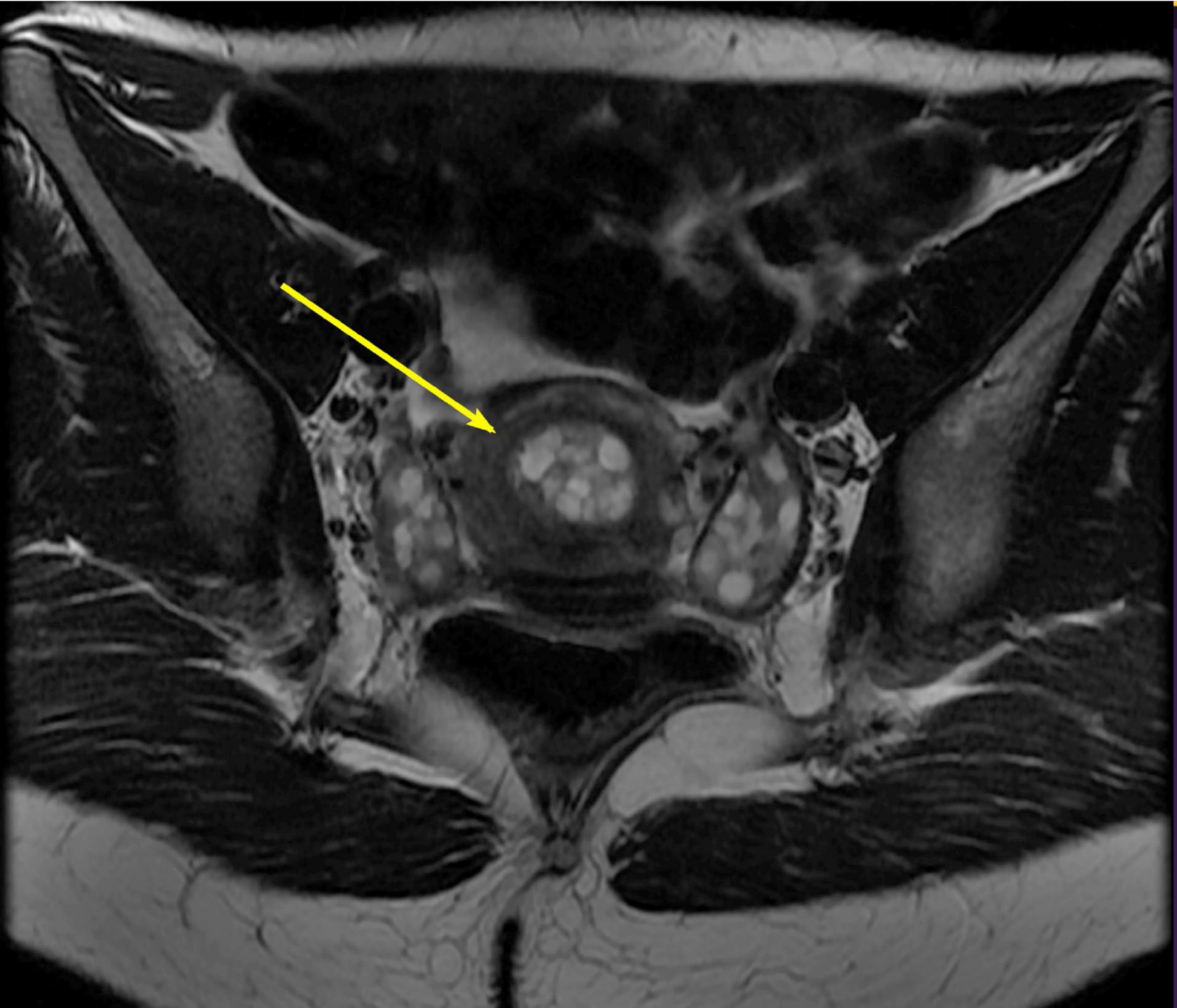
Rabies Meningoencephalitis

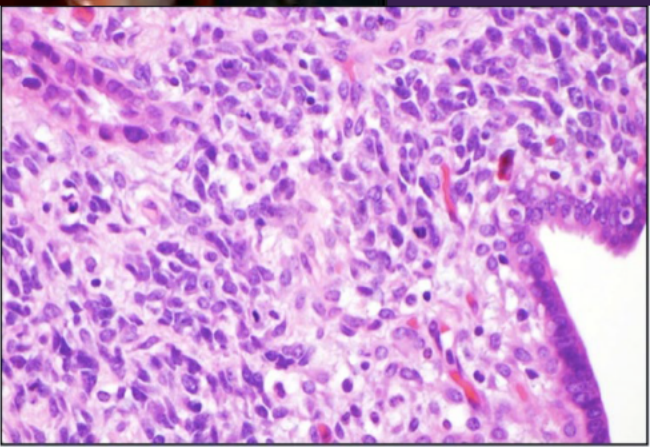
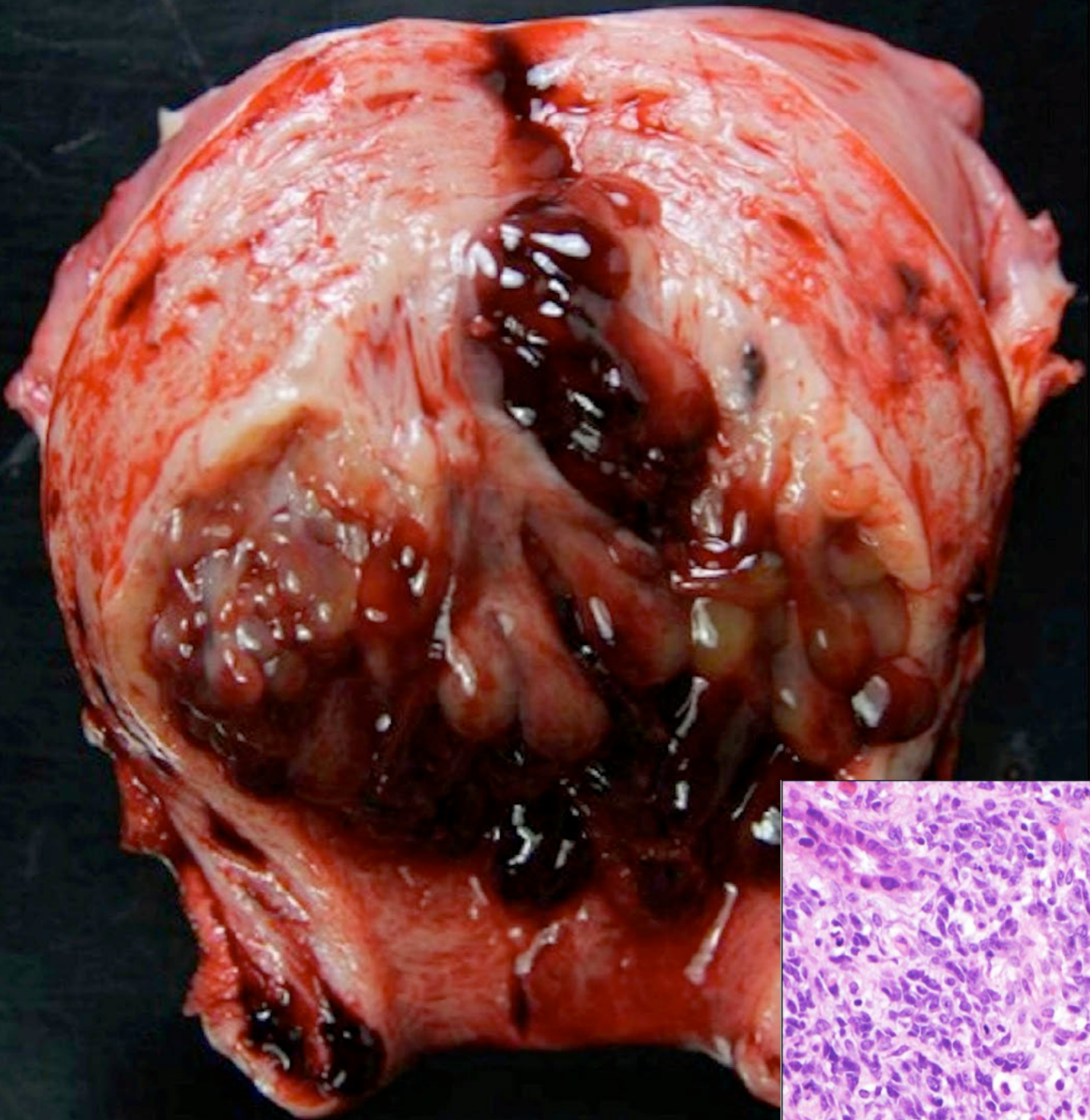
Steve Co, MD
University of British Columbia
Vancouver, Canada

Genitourinary Best Case

28-year-old nulligravida woman presents with a 3-month history of recurrent intermenstrual vaginal bleeding.



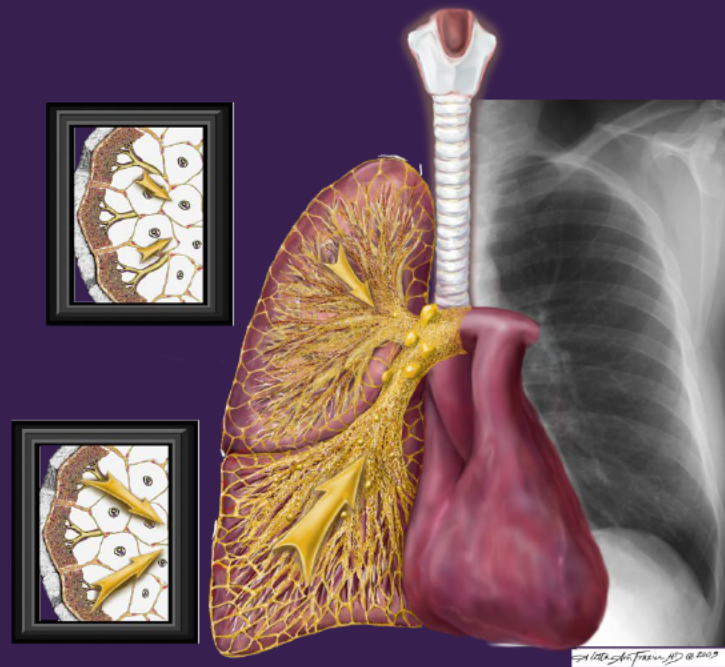




Embryonal Rhabdomyosarcoma, Sarcoma Botyroides

Maurice Henry Zissen, MD
Massachusetts General Hospital
Boston, Massachusetts

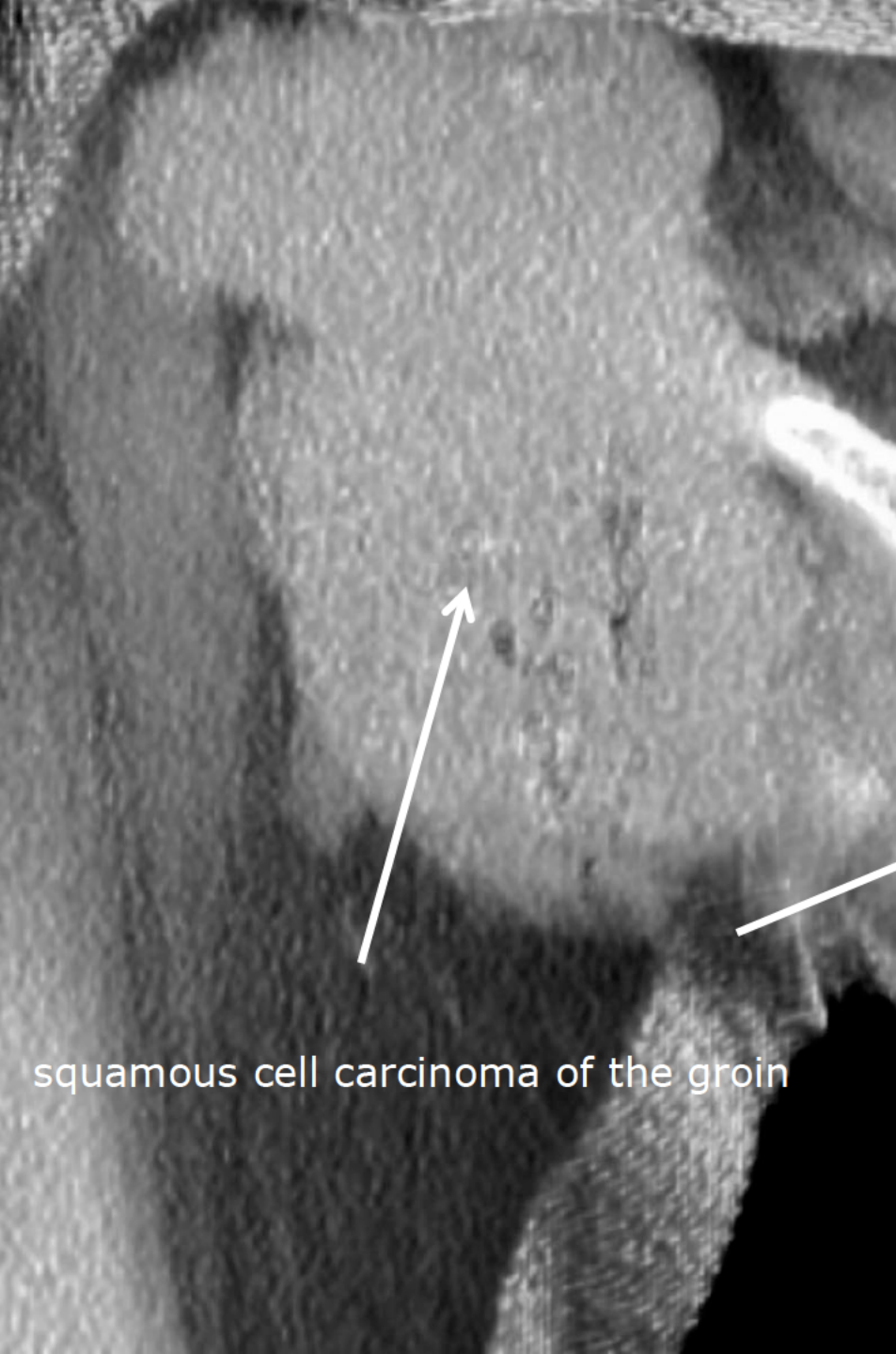
PULMONARY AND MEDIASTINAL IMAGING



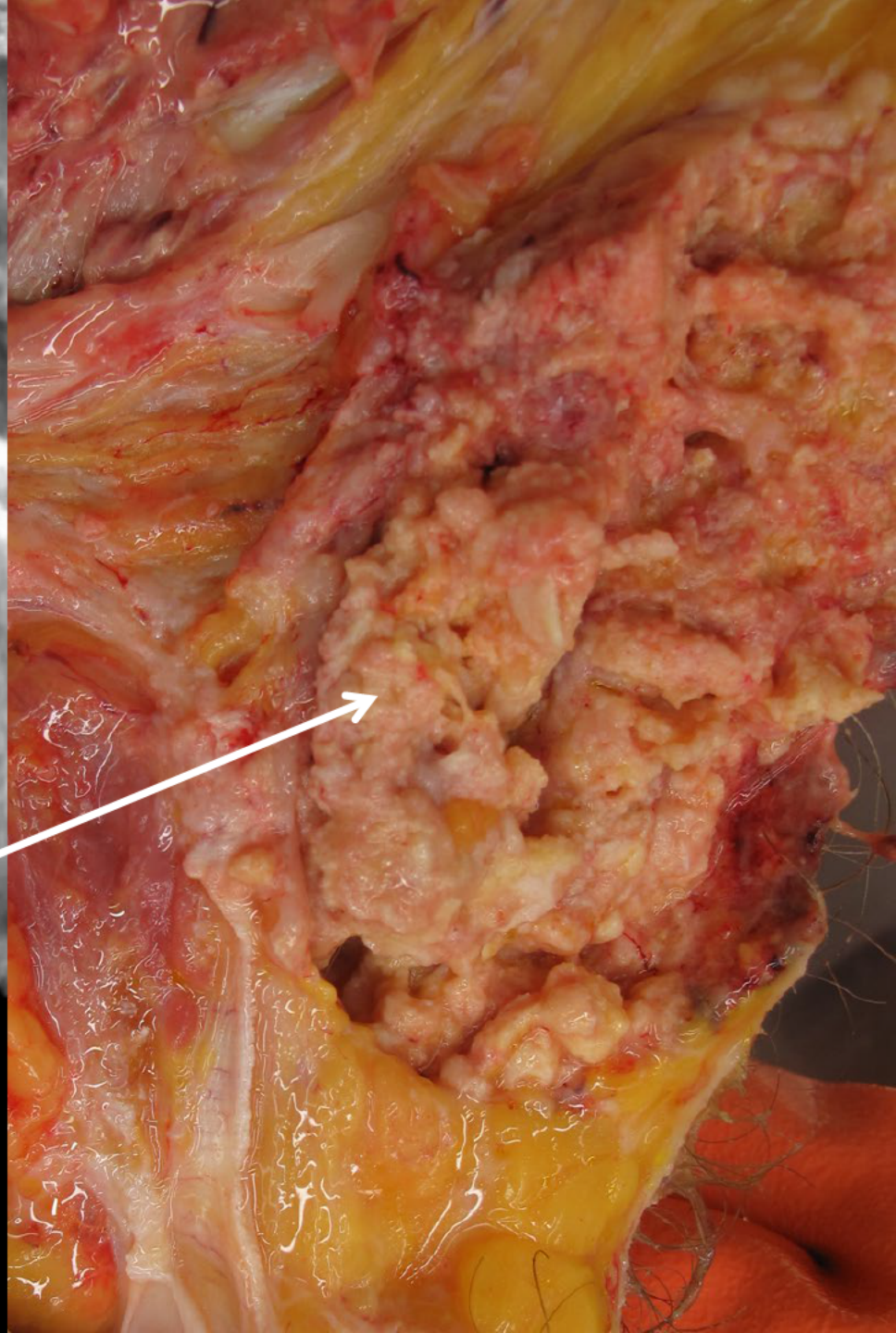
38-year-old woman with malaise and anorexia, found dead in bed. Underwent forensic radiology.

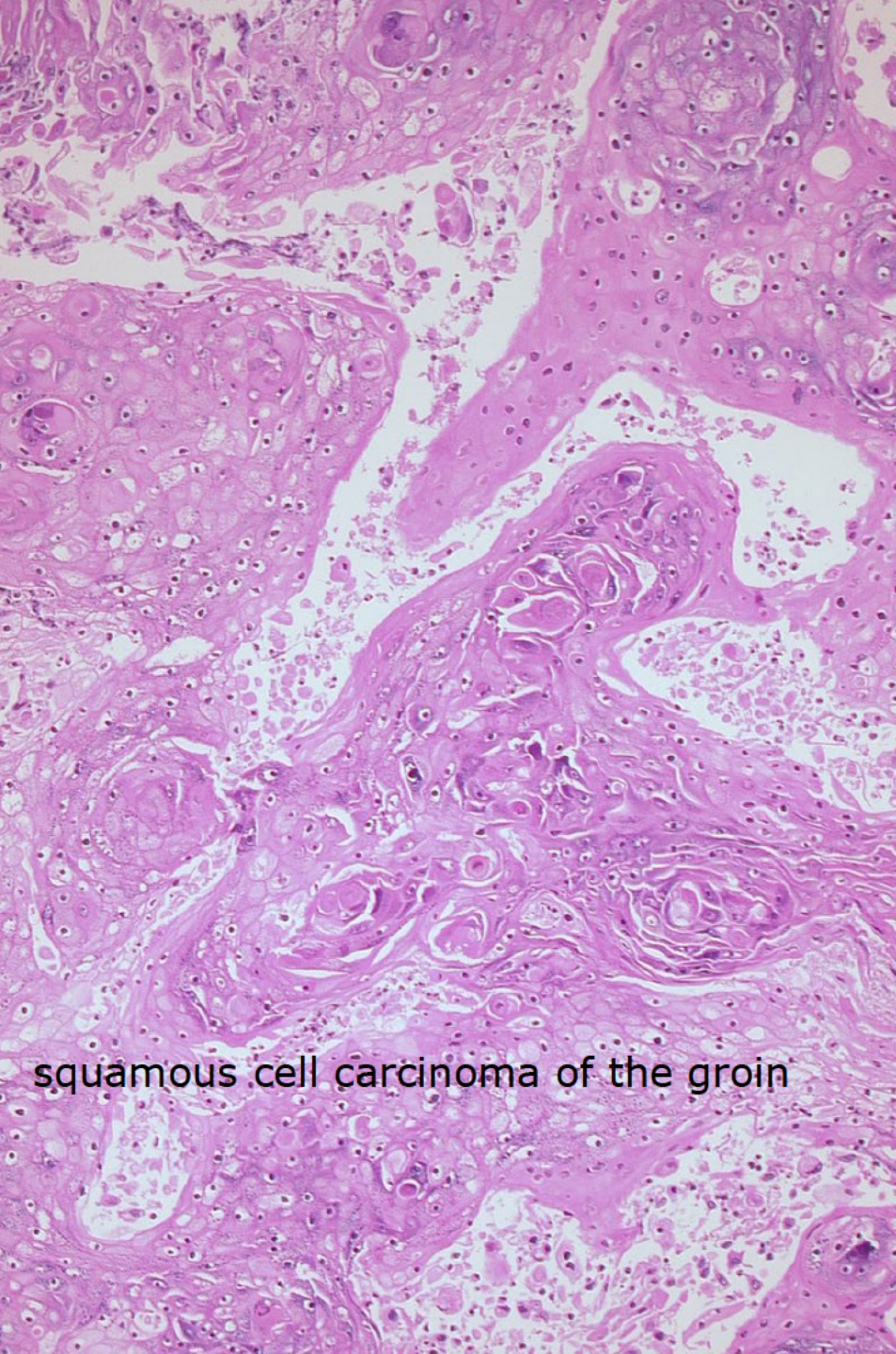


squamous cell carcinoma of the groin

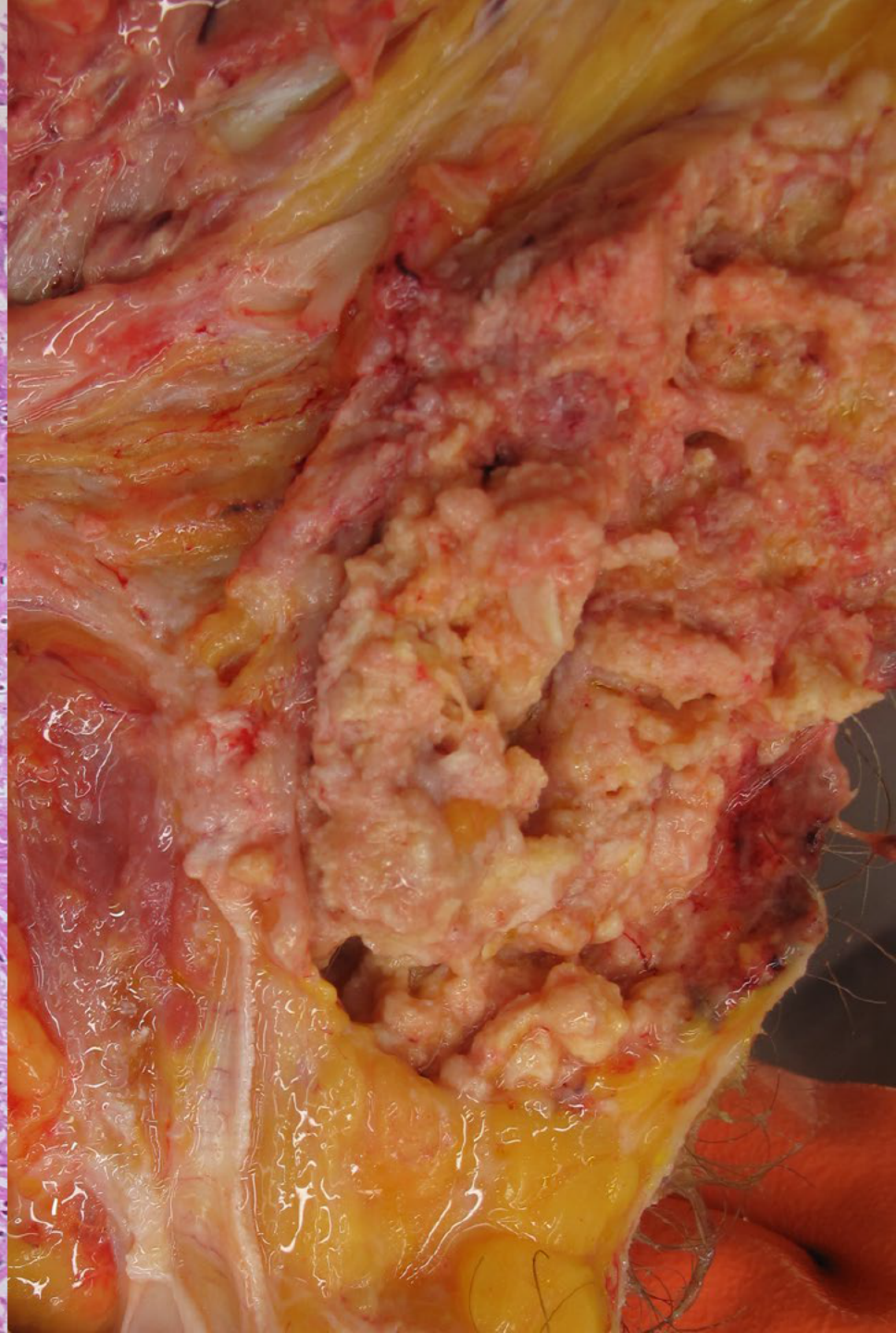


squamous cell carcinoma of the groin



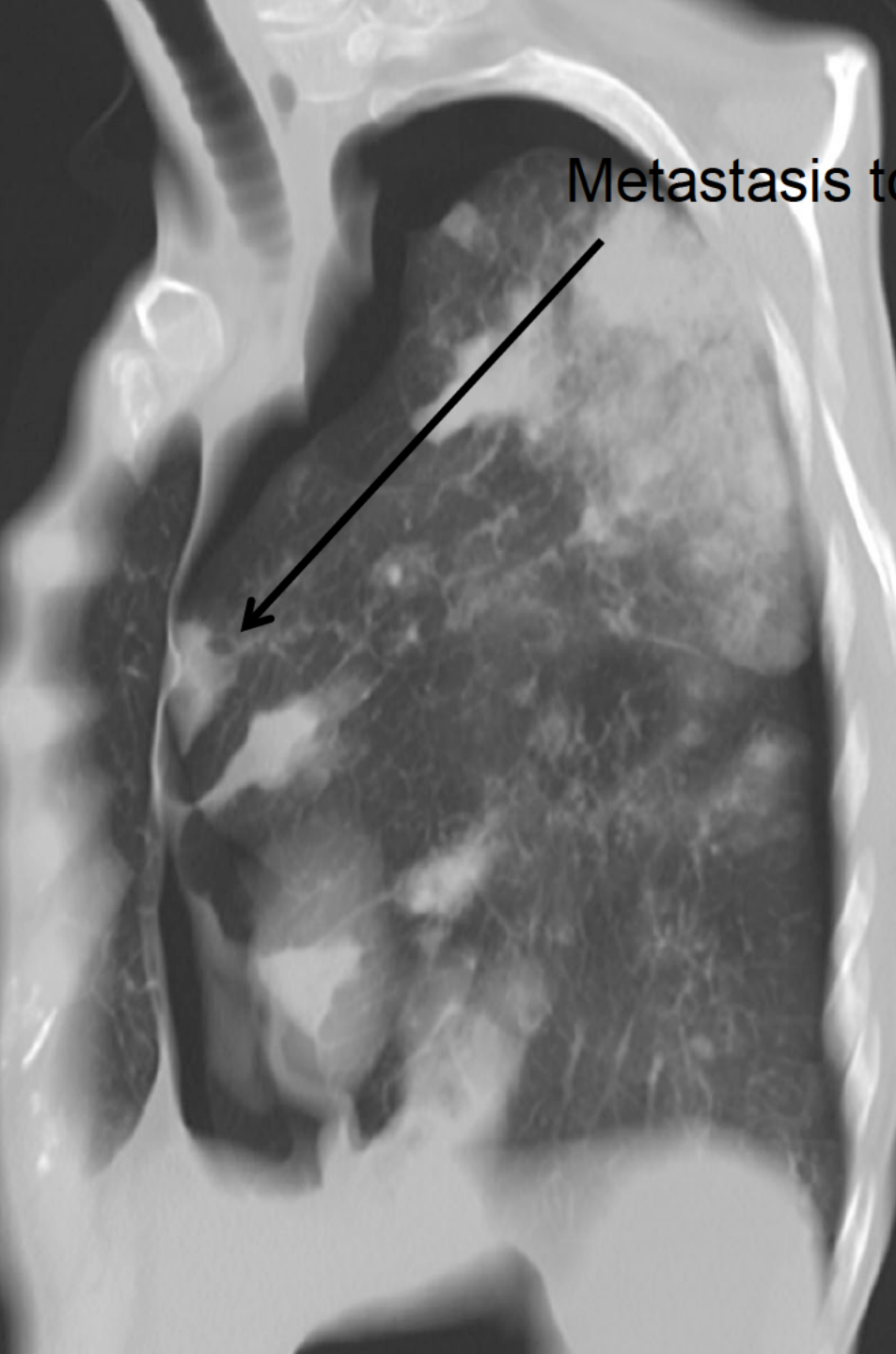


squamous cell carcinoma of the groin

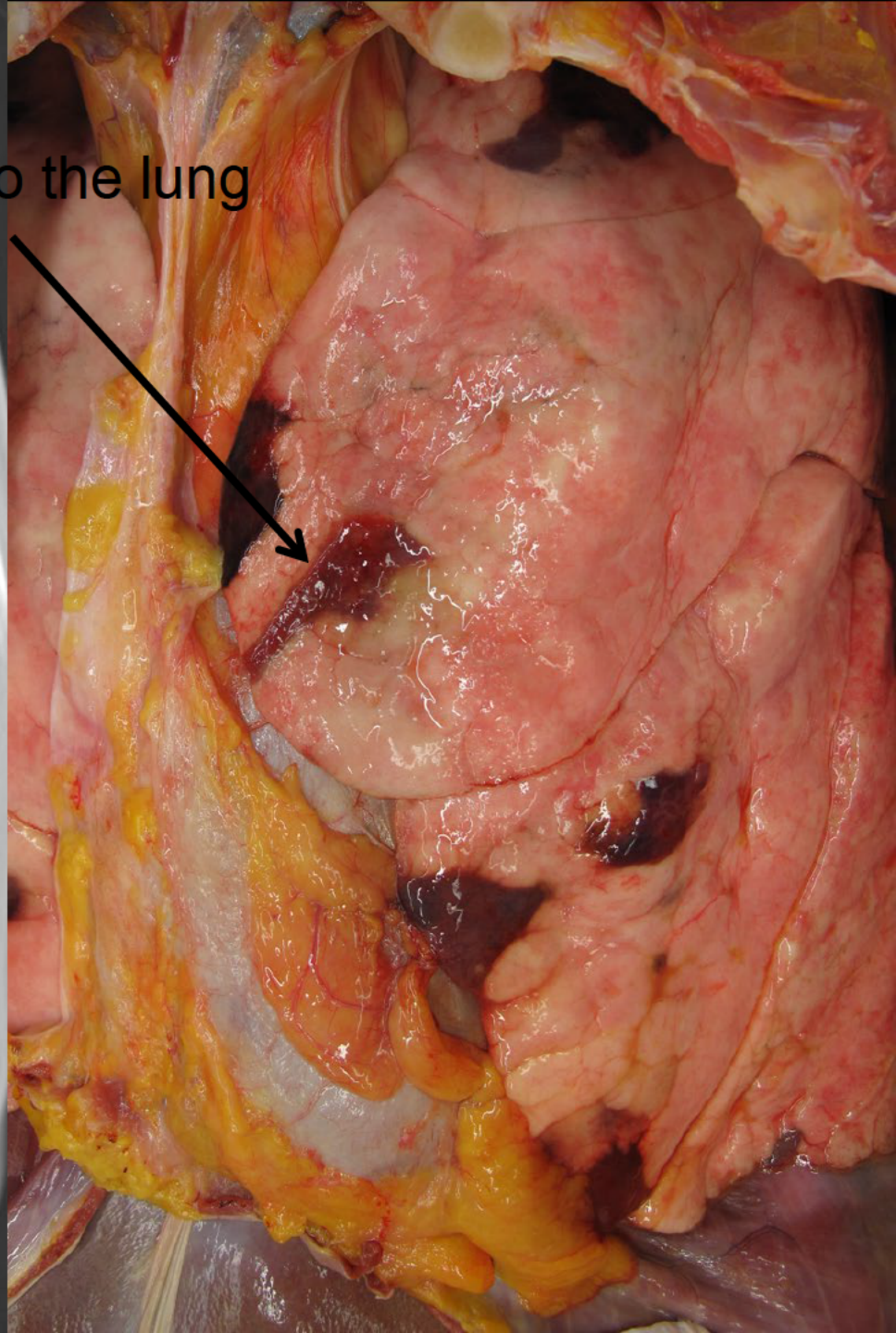


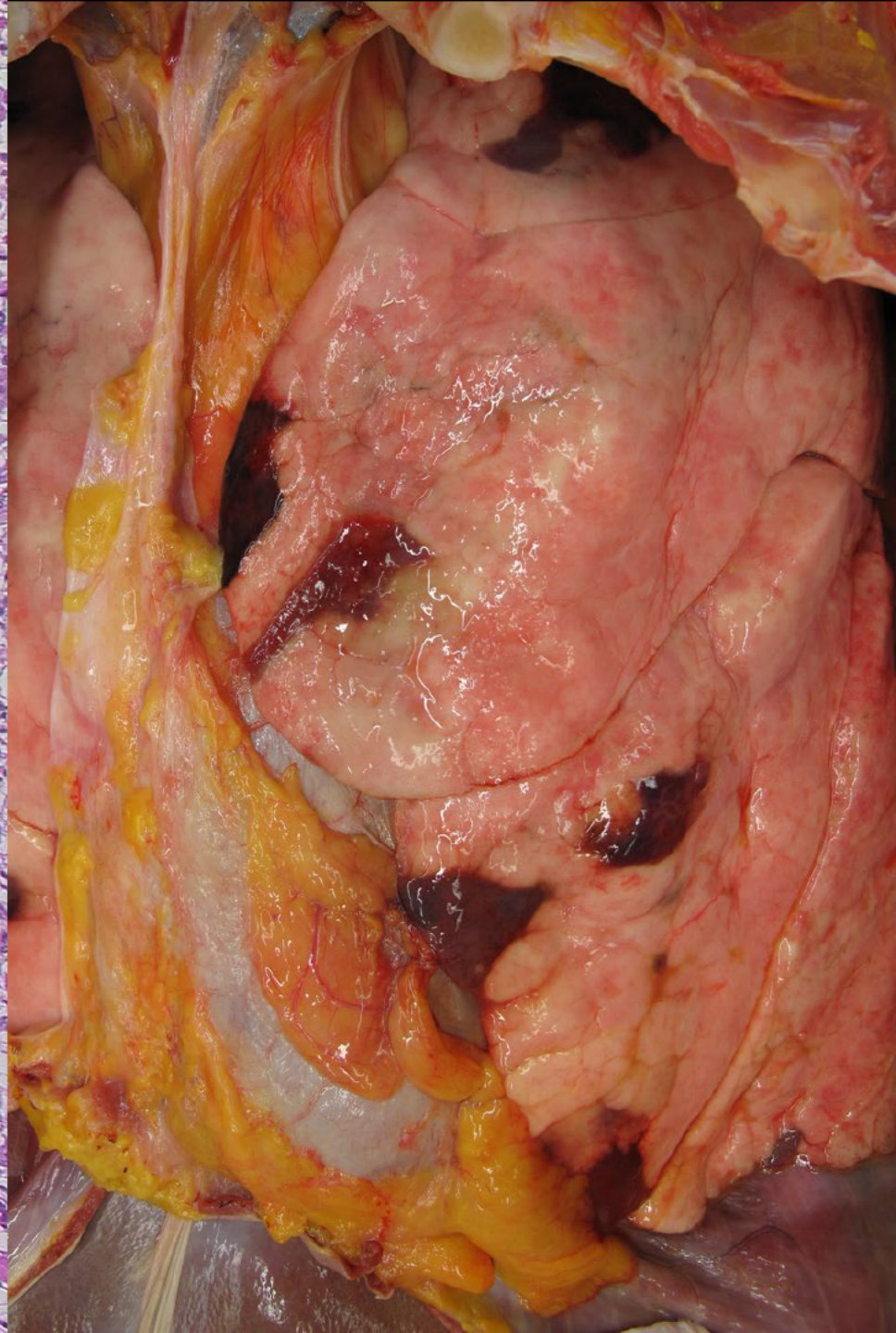
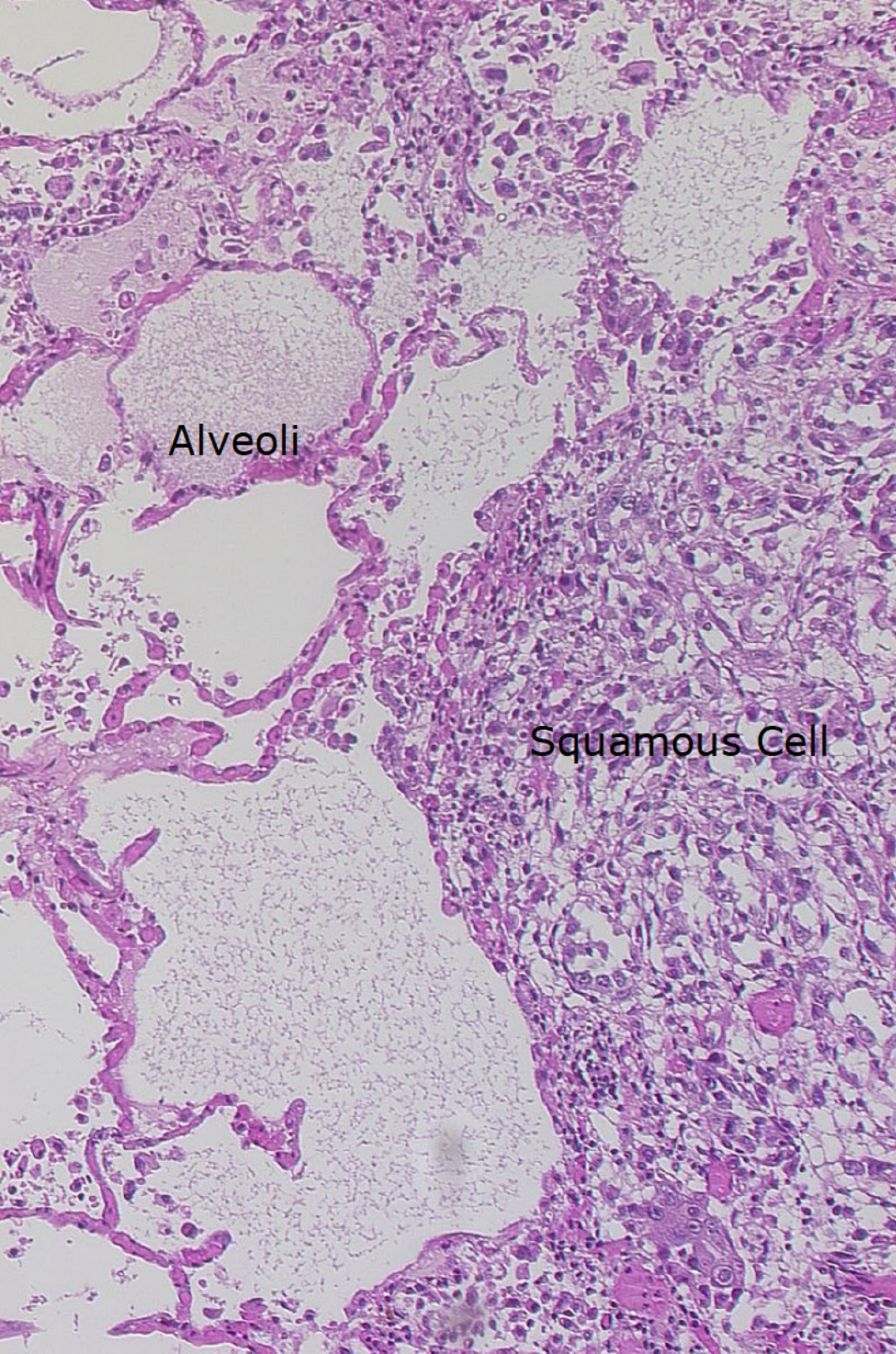
Metastasis to the lung





Metastasis to the lung





Squamous Cell Metastasis to the Lung (Soft Tissue Primary)

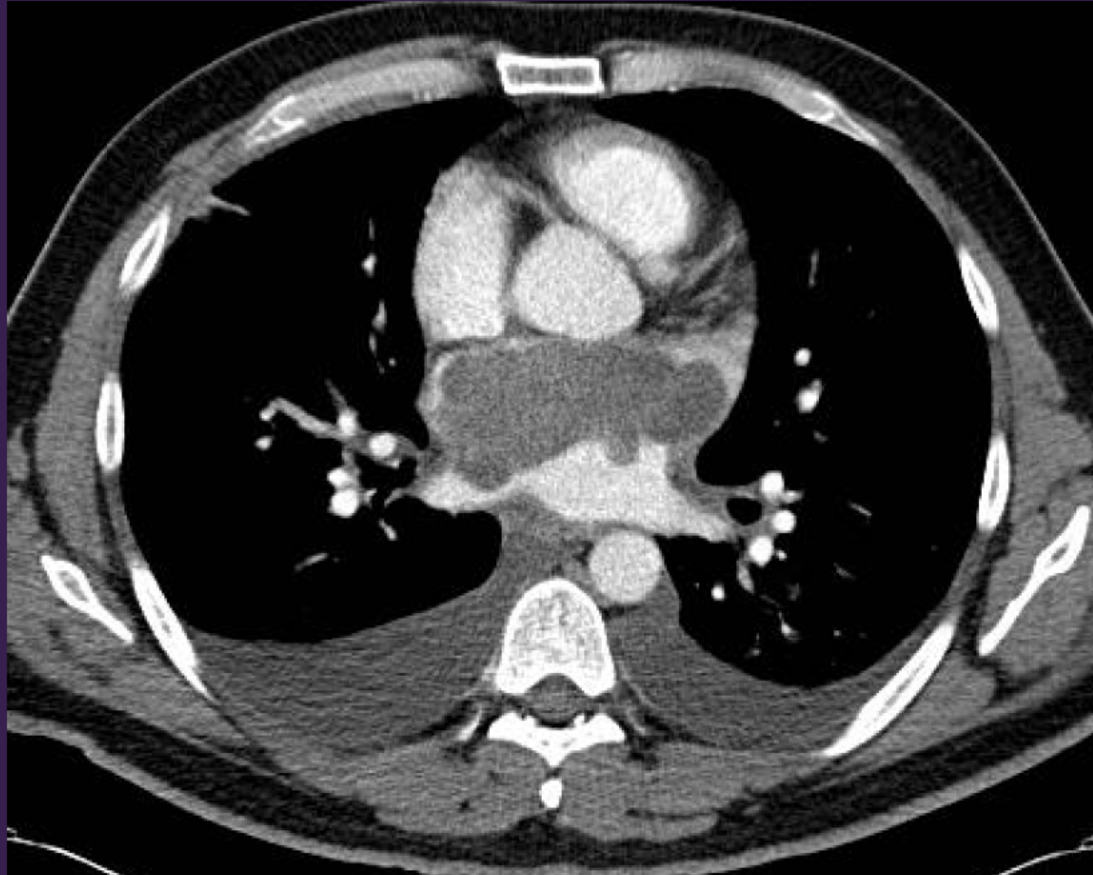
Nicole Berger, MD

University of Zurich, Institute of Forensic
Medicine

Zurich, Switzerland

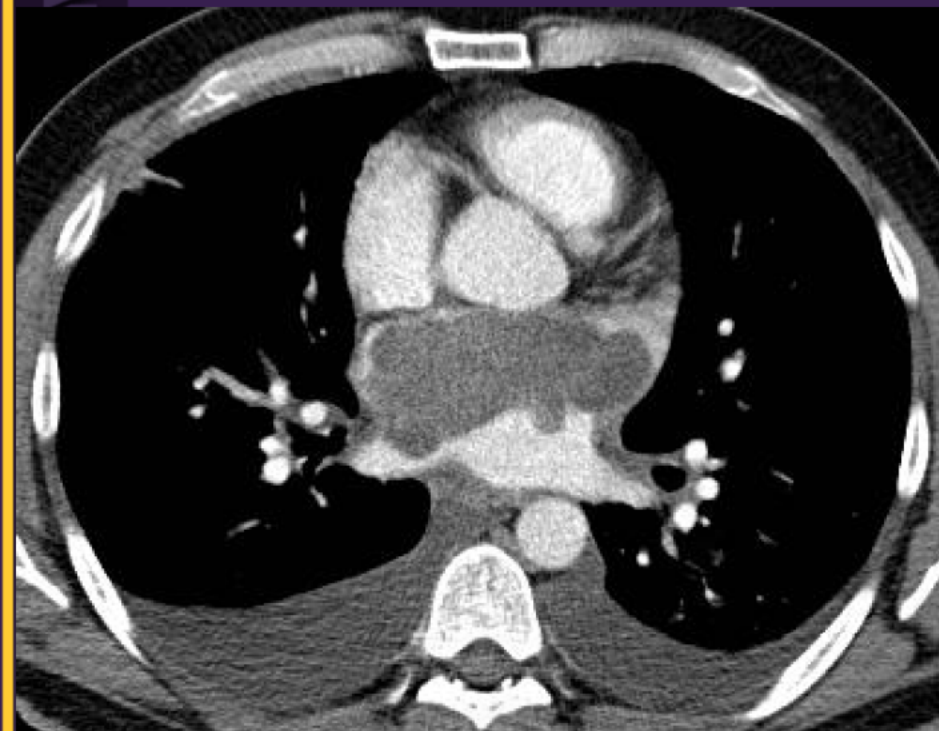
Cardiovascular Imaging



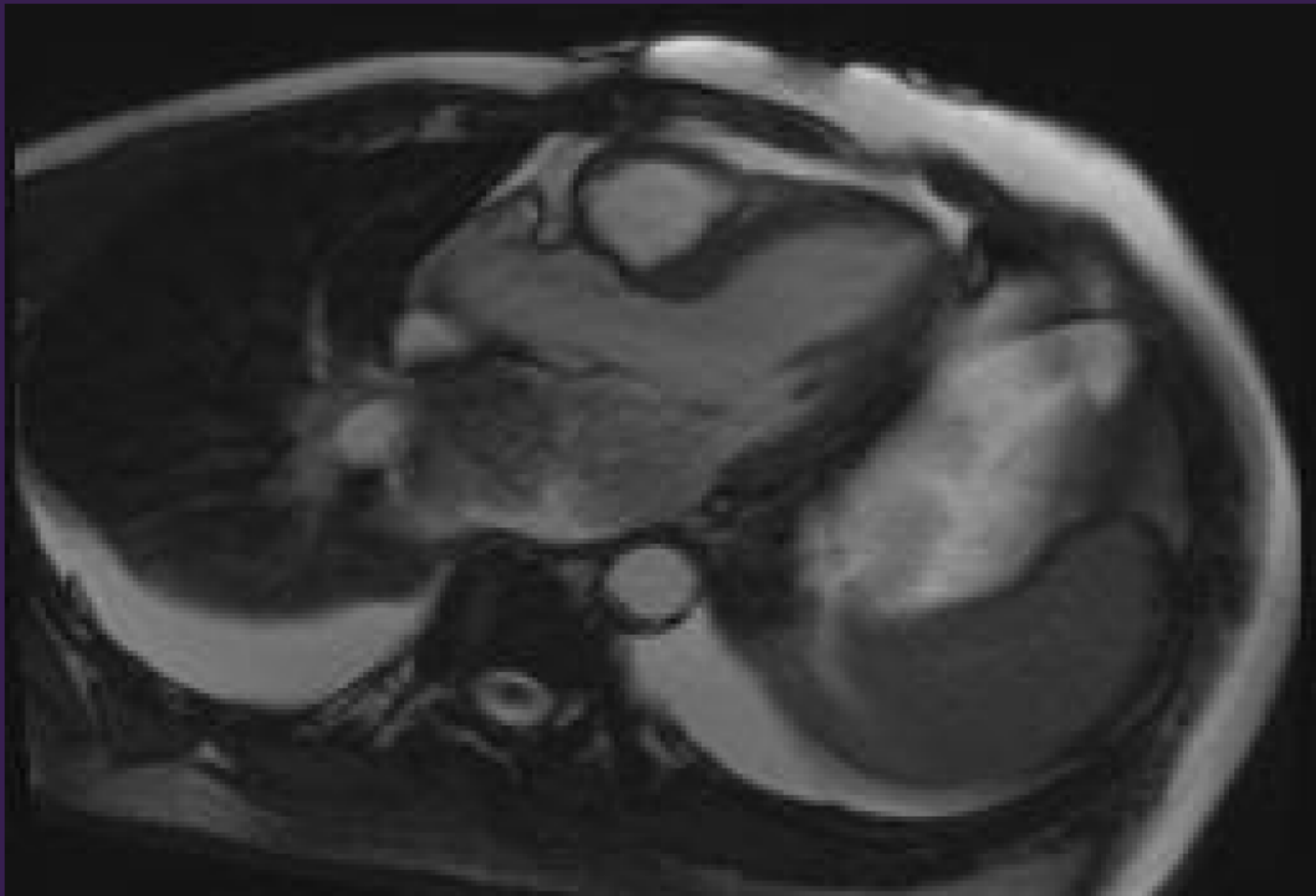


42 year old male with 3-day history of dyspnea and 3-month history cough.

A



Contrast-enhanced axial & coronal CT images demonstrate a large multilobulated soft tissue mass filling the left atrium.



Axial SSFP image (3 chamber view) demonstrates an heterogeneous mass within the left atrium.

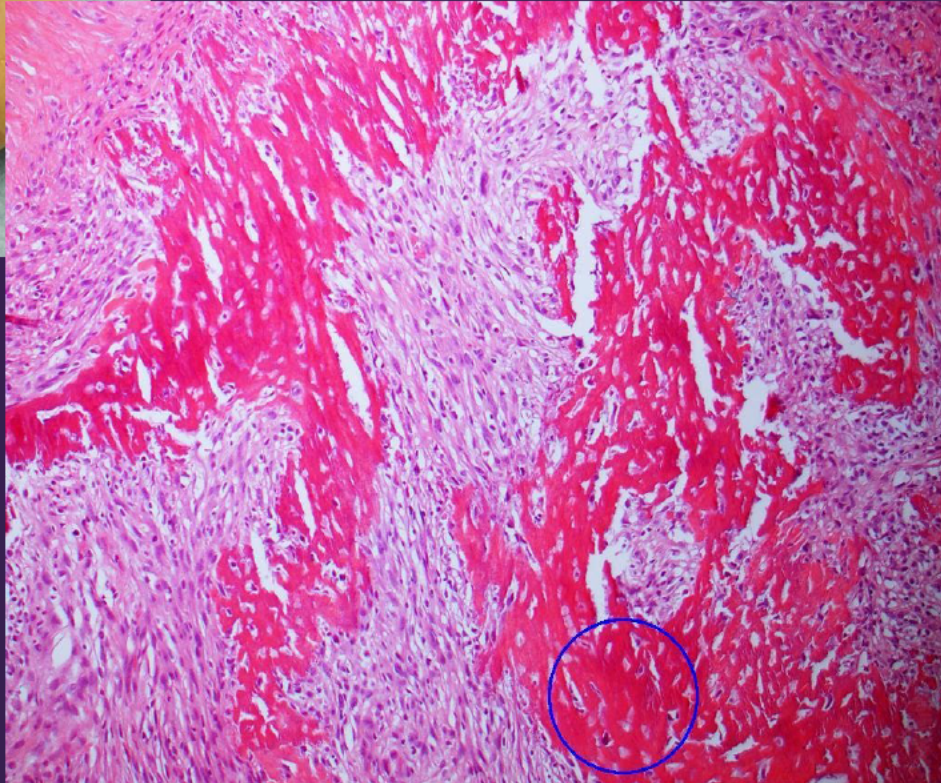


Gross specimen excised from left atrium shows lobulated mass with a pale yellow coloration.





Microscopic evaluation shows spindle-shaped sarcomatous cells with zones of osteoid matrix (blue circle).



Osteosarcoma of the Left Atrium

Rhett Taylor, MD
University of Alberta
Edmonton, Canada

Pediatric Best Case

9-month-old boy found to have a firm left abdominal mass on well-baby exam.

Image size: 608 x 790

S

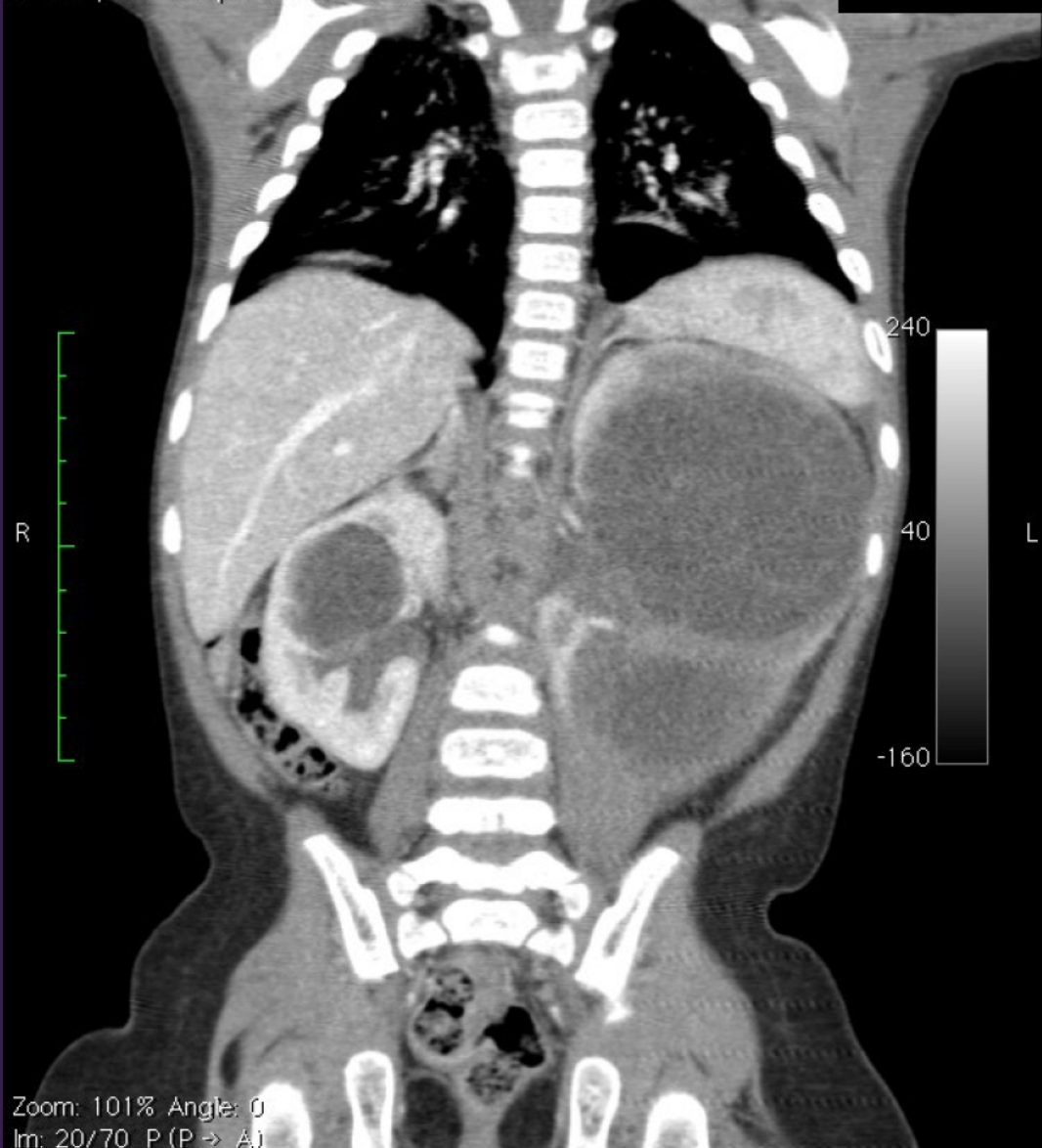
MR2167 (112 y , 111 y)

View size: 611 x 794

PEDI 10-19 LBS-Abdomen-Hx - COR

WL: 40 WW: 400

X: 264 px Y: 770 px Value: -1000.00



Zoom: 101% Angle: 0

Im: 20/70 P (P -> A)

Uncompressed

Thickness: 1.90 mm Location: 124.07 mm

1

<

Image size: 512 x 512
View size: 794 x 794
WL: 40 WW: 400
X: 150 px Y: 501 px Value: -884.00

A

MR2167 (112 y , 111 y)
PEDI 10-19 LBS-Abdomen-Hx - OMNI 300 20ML-HI

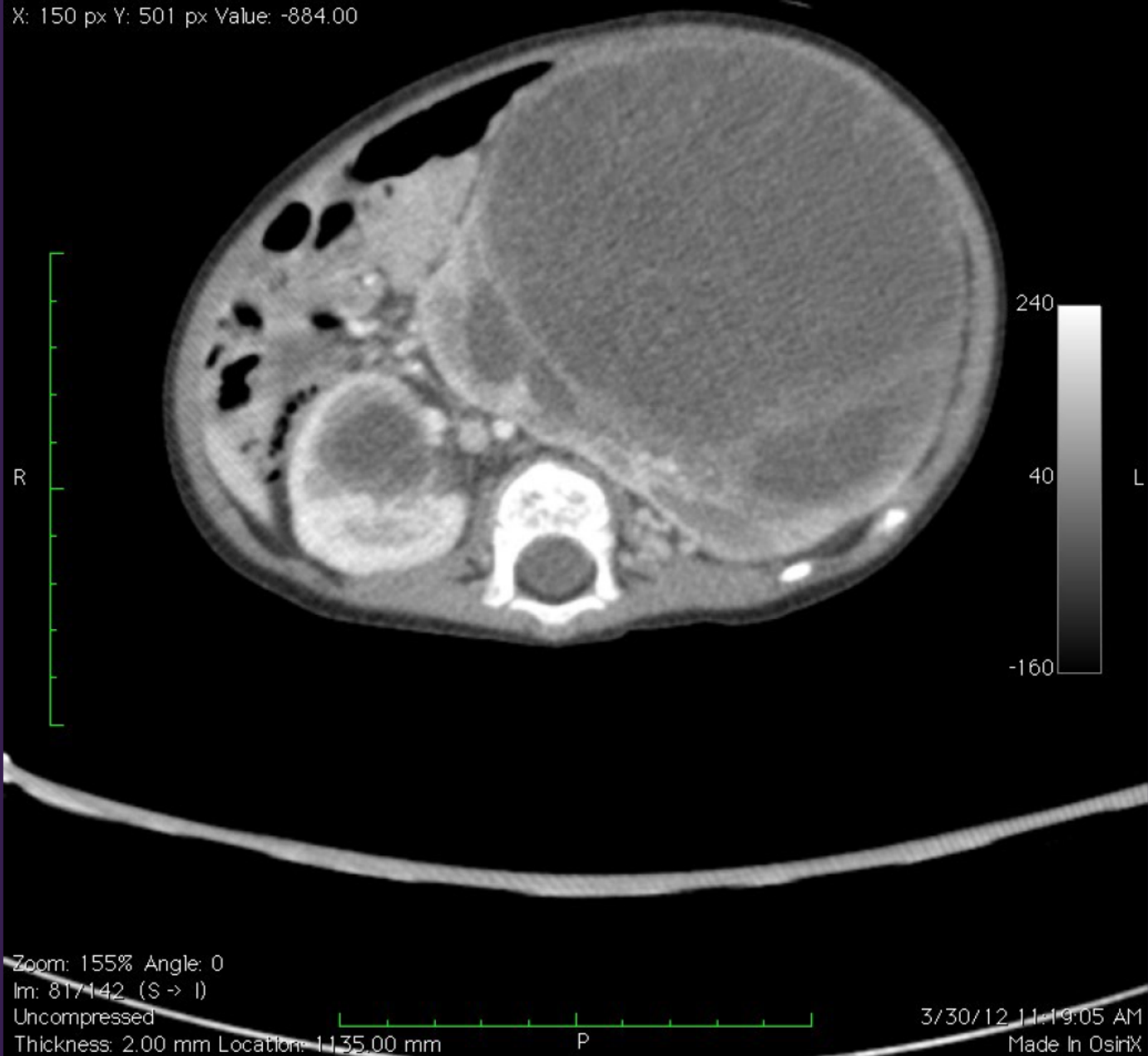




Image size: 608 x 790

S

MR2167 (112 y , 111 y)

View size: 611 x 794

PEDI 10-19 LBS-Abdomen-Hx - COR

WL: -500 WW: 1400

X: 252 px Y: 779 px Value: -1000.00



Zoom: 101% Angle: 0

Im: 15/70 P (P -> A)

Uncompressed

Thickness: 1.90 mm Location: 133.56 mm

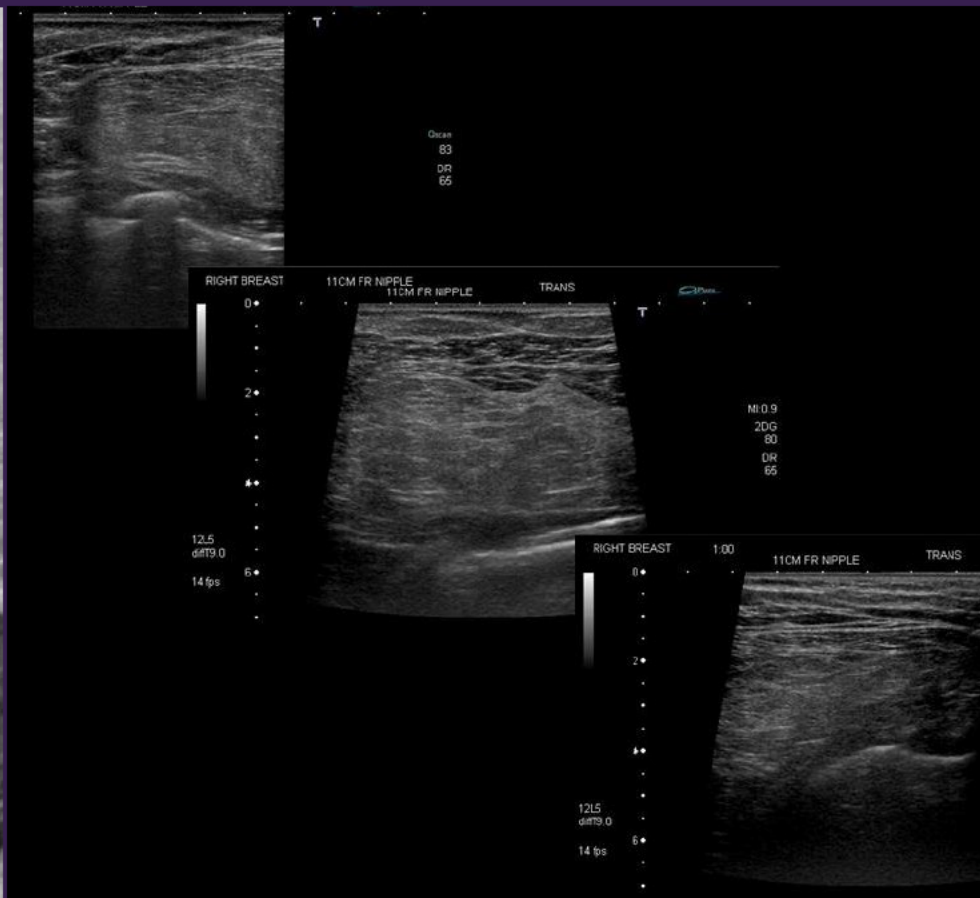
Bilateral Cystic Nephroma and Type 1 Pleuropulmonary Blastoma with DICER1 Mutation

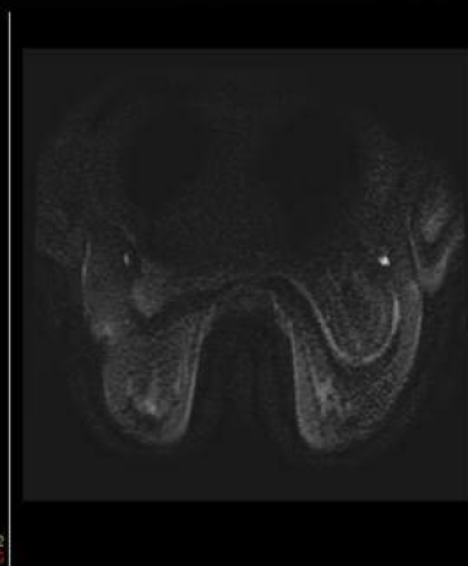
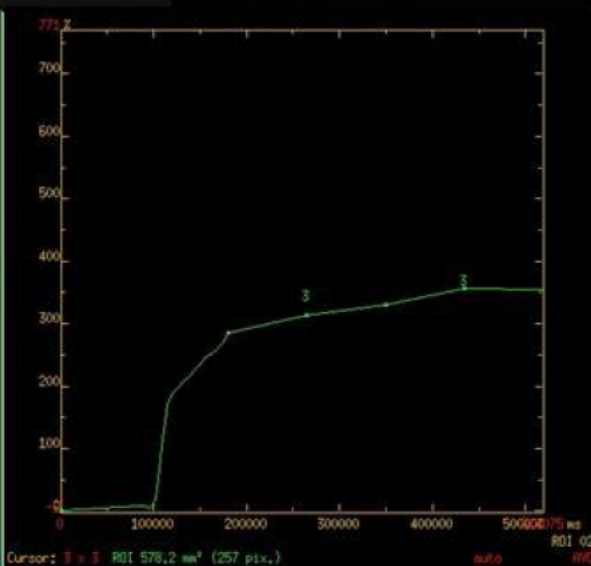
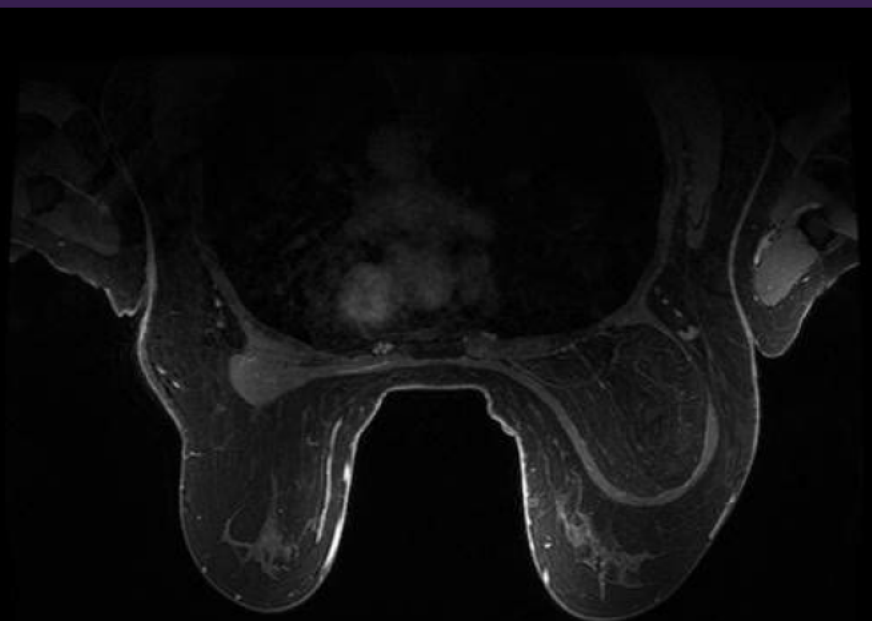
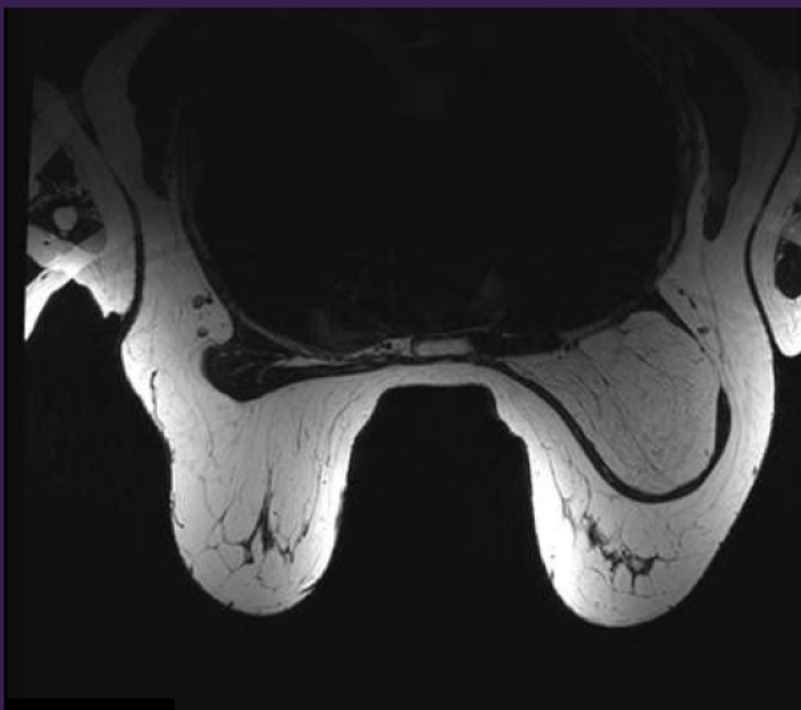
Katrina Lambert, MD
Vanderbilt University Medical Center
Nashville, Tennessee

Breast Best Case

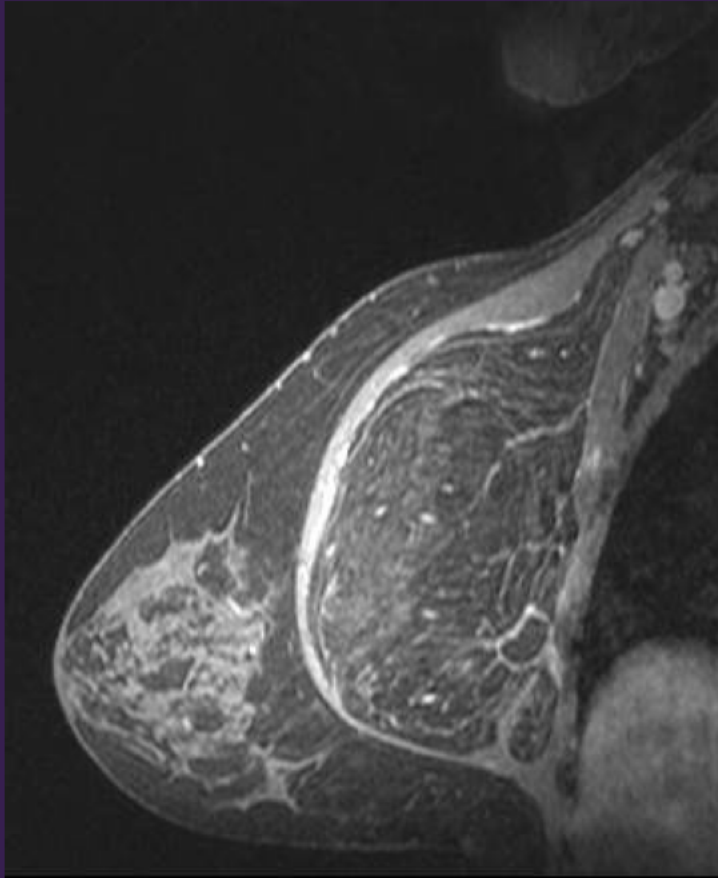
63-year-old woman who lived in Chernobyl in 1986 during the nuclear accident presented with an enlarging, palpable, right upper quadrant breast mass. She first palpated a lump on her right upper breast about 2 years ago, but did not seek medical attention for the mass until her symptoms of chest fullness continued to worsen.



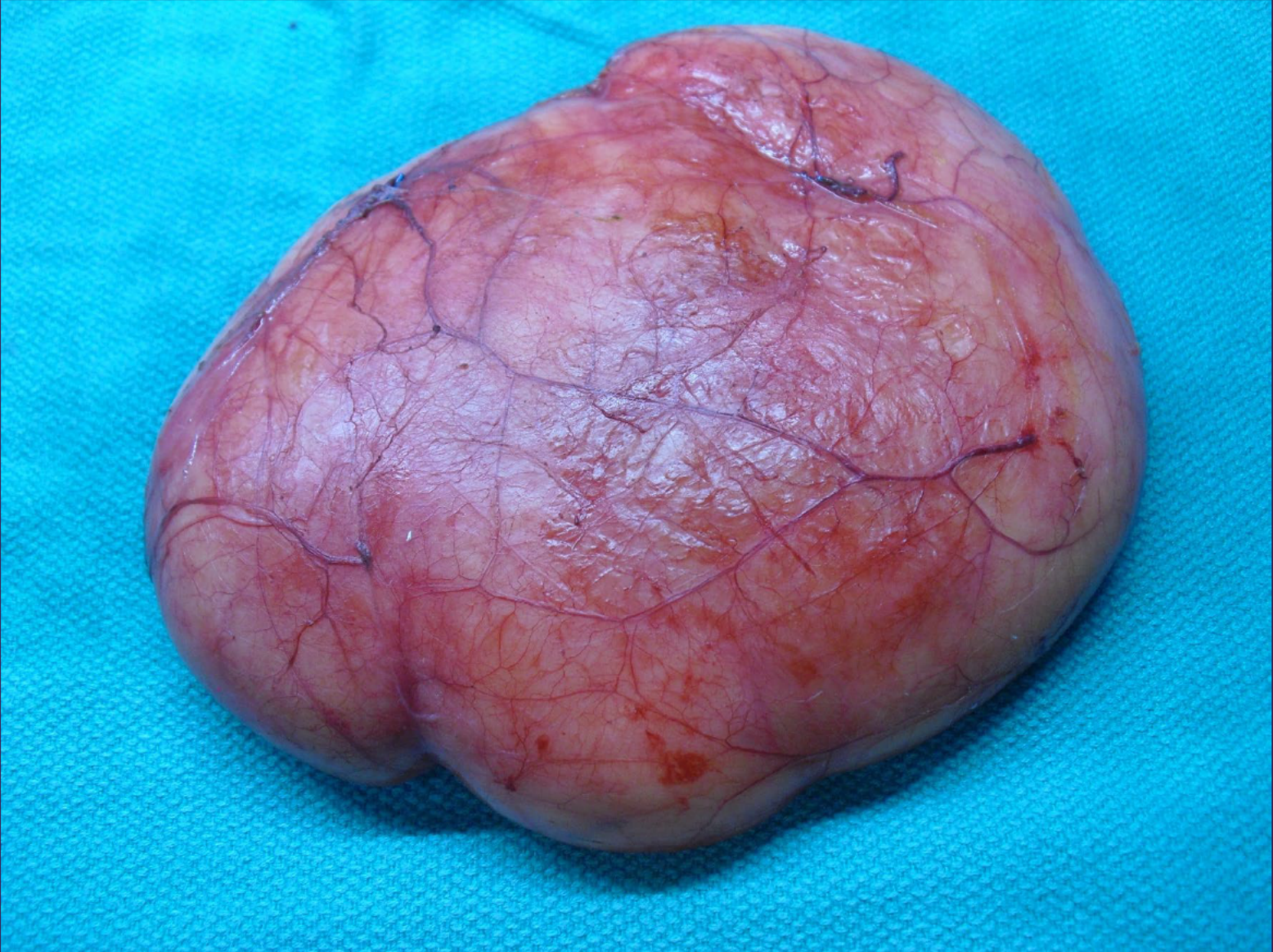




2 Months Later



- A follow-up MRI obtained two months later demonstrated sharp margins and high fat content compatible with lipoma; however, some interval signal heterogeneity, gradual enhancement, and apparent interval growth raised the concern for malignant transformation.



Atypical Lipomatous Tumor of the Chest Wall

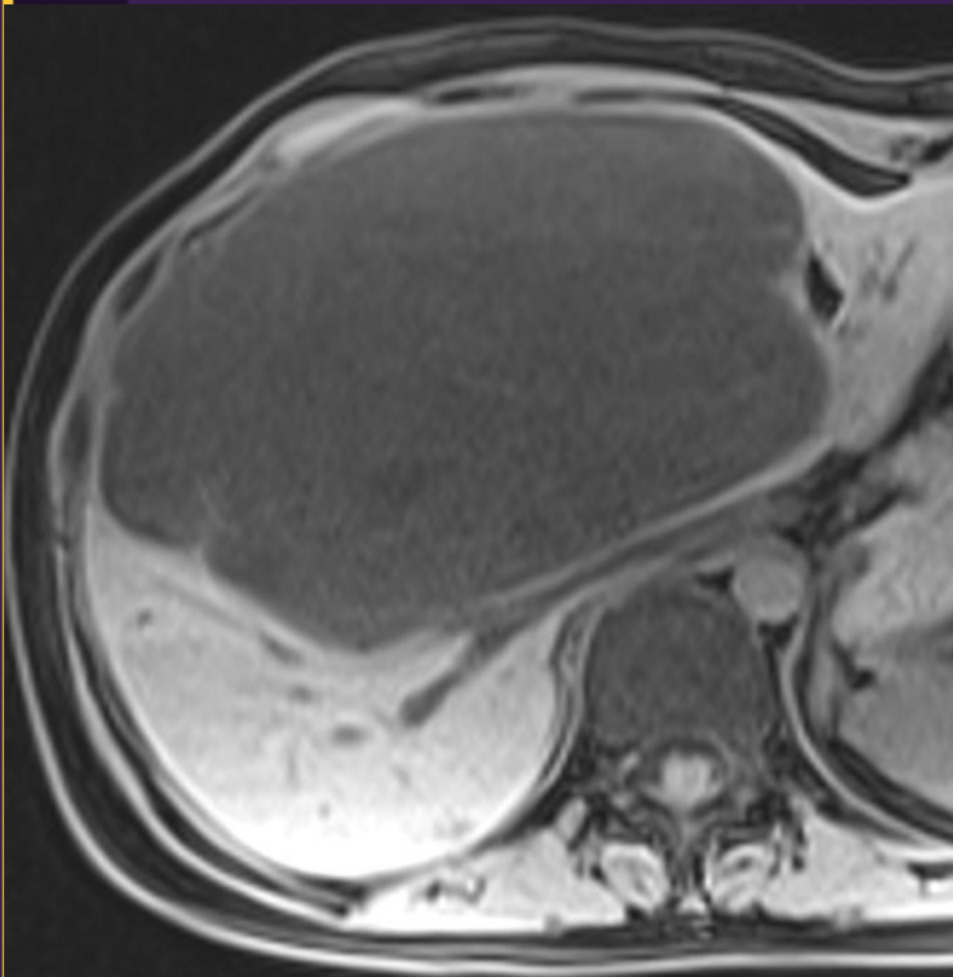
Jason Oppenheimer, MD
Stanford University
Stanford, California

Gastrointestinal Best Case

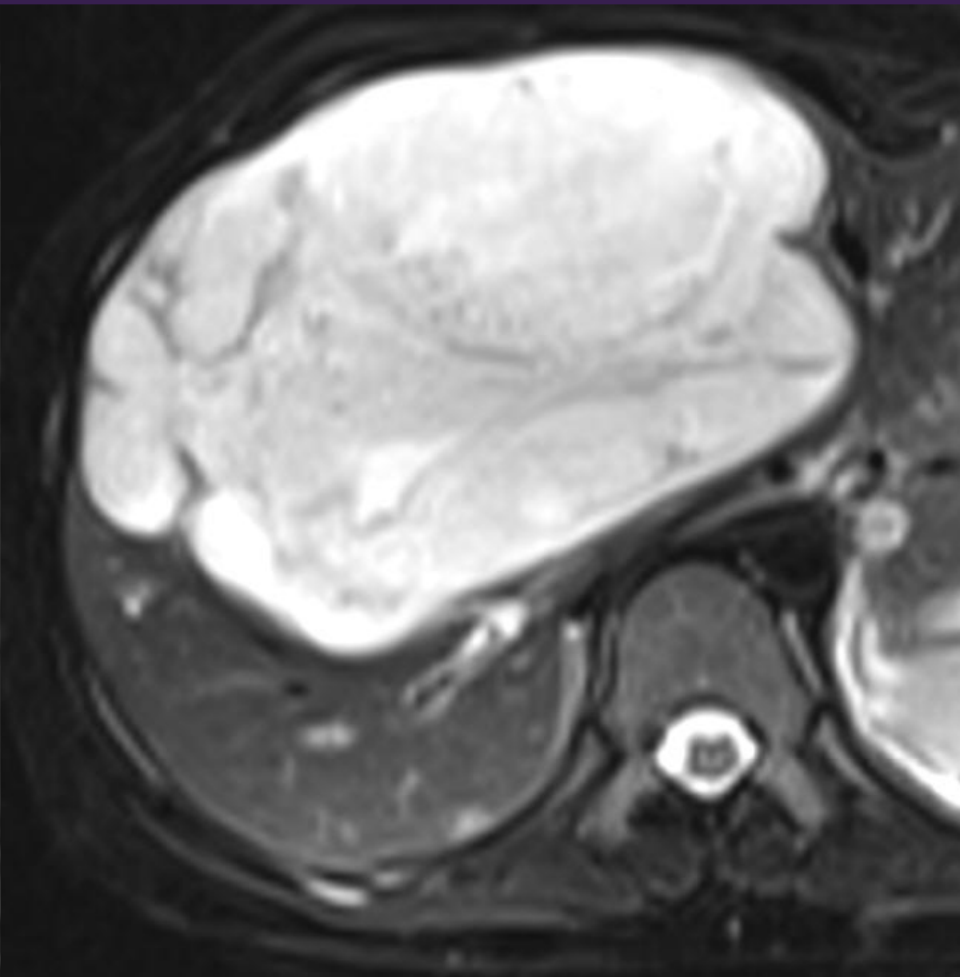
27-year-old woman with right upper quadrant and epigastric pain with fullness in her upper abdomen.

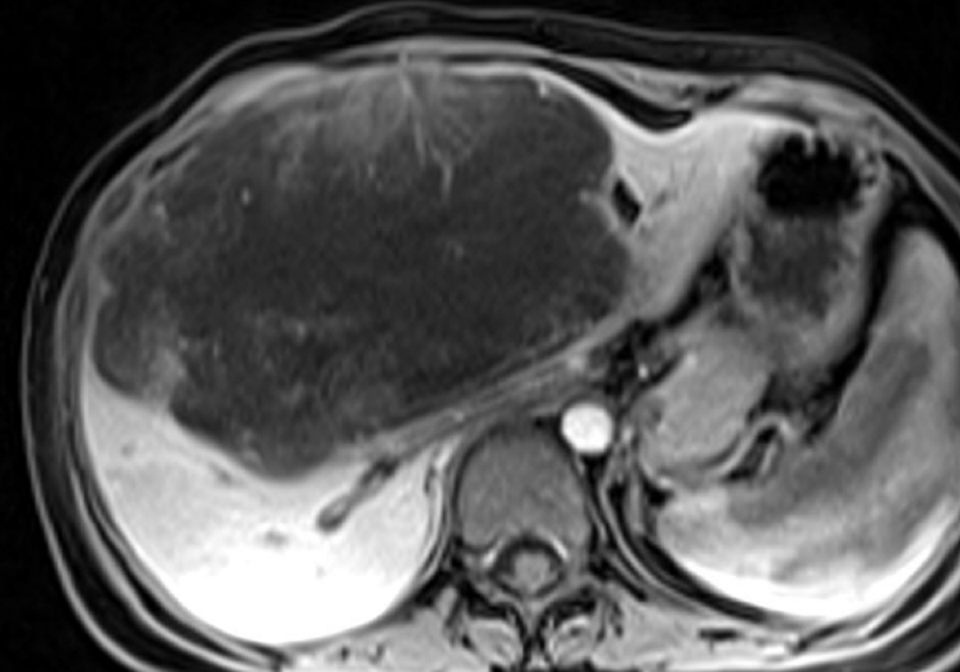


T1W

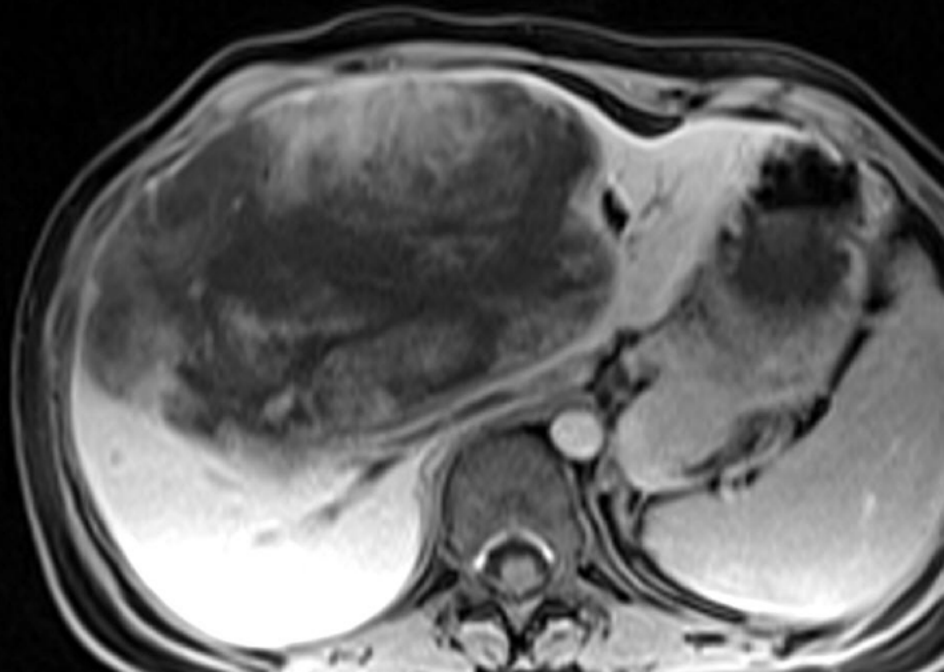


T2W



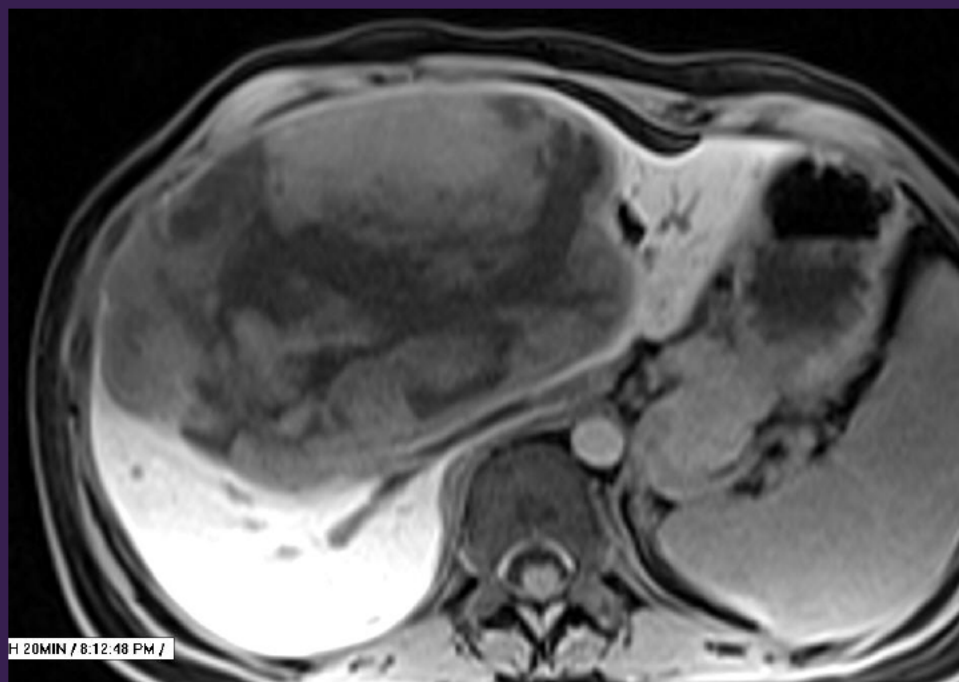


HAP

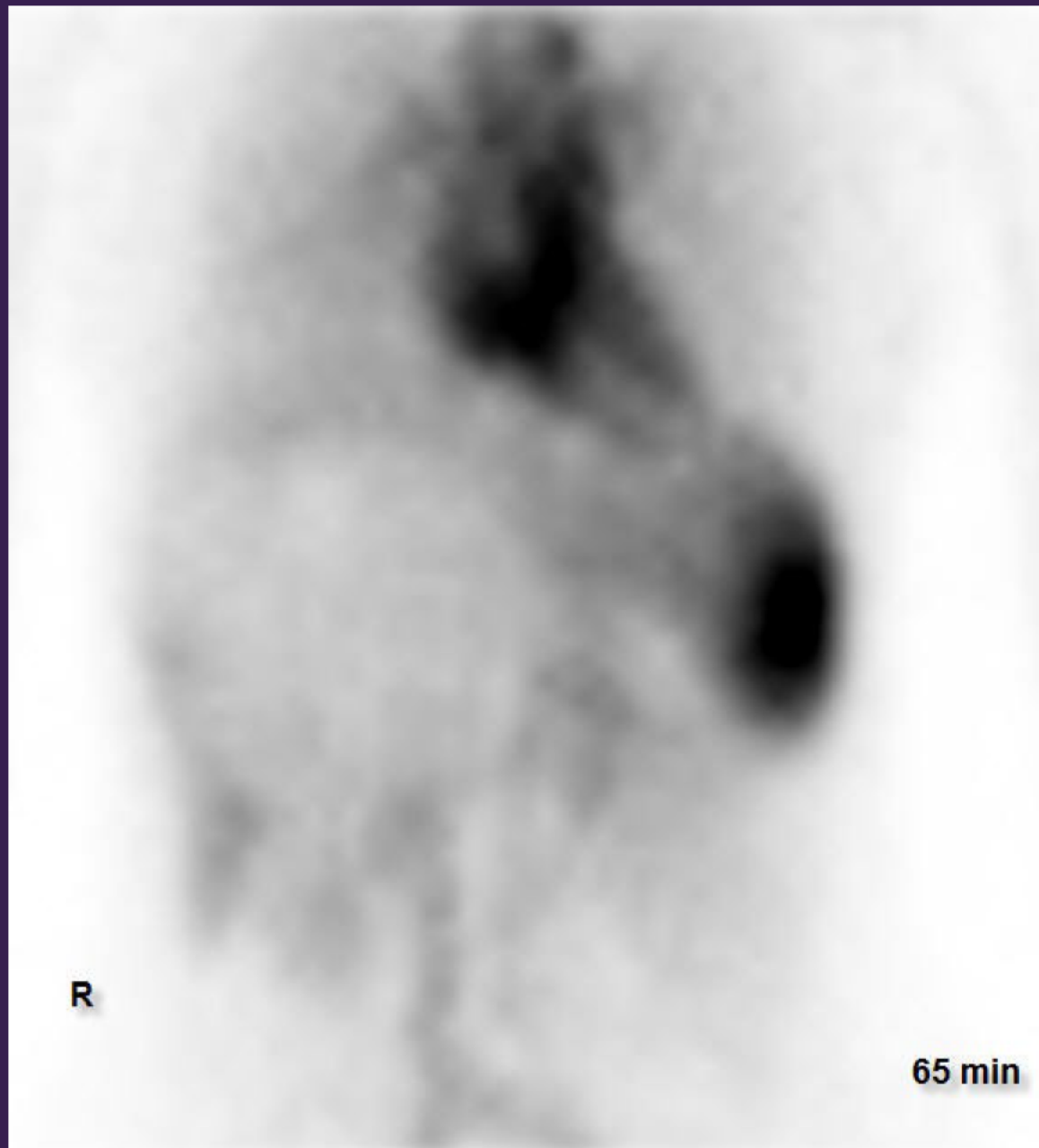


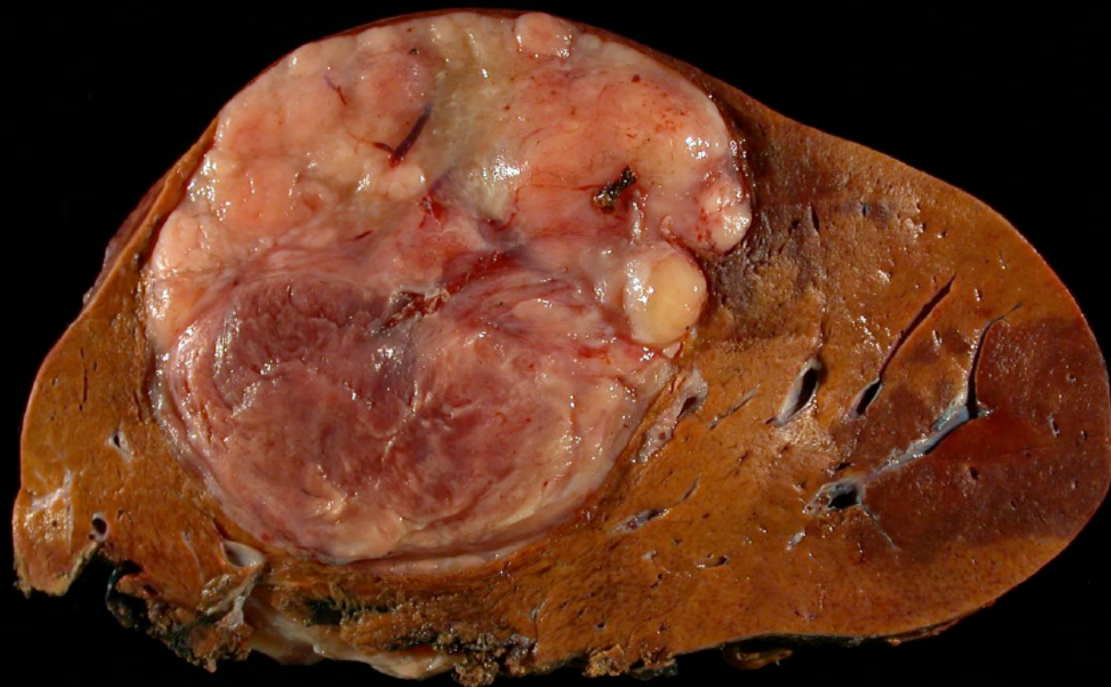
PVP

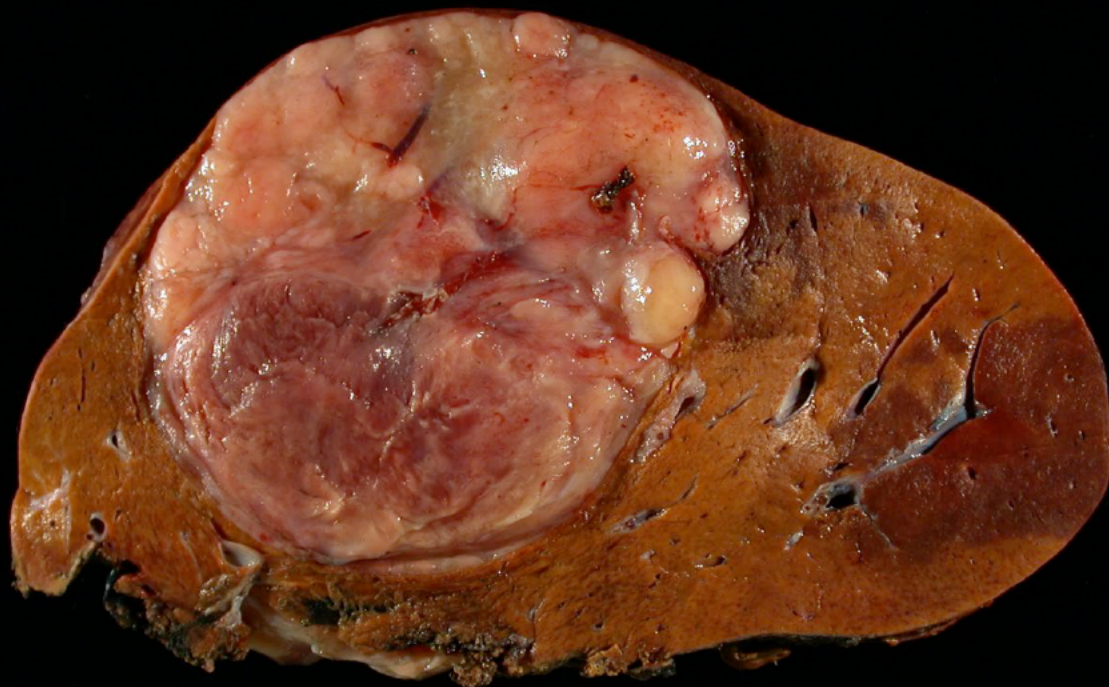
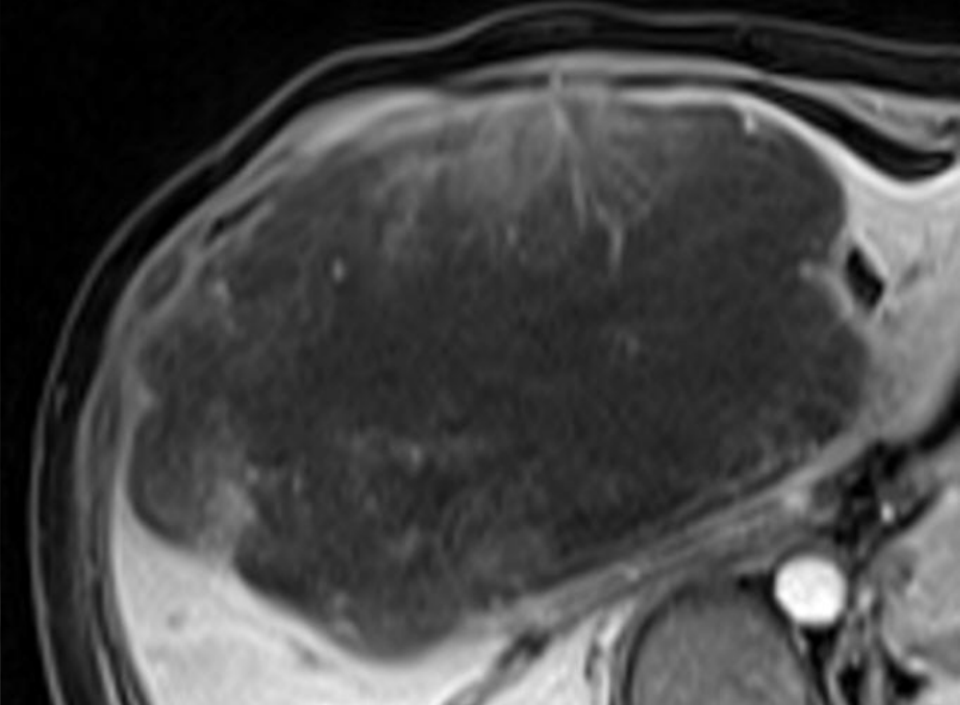
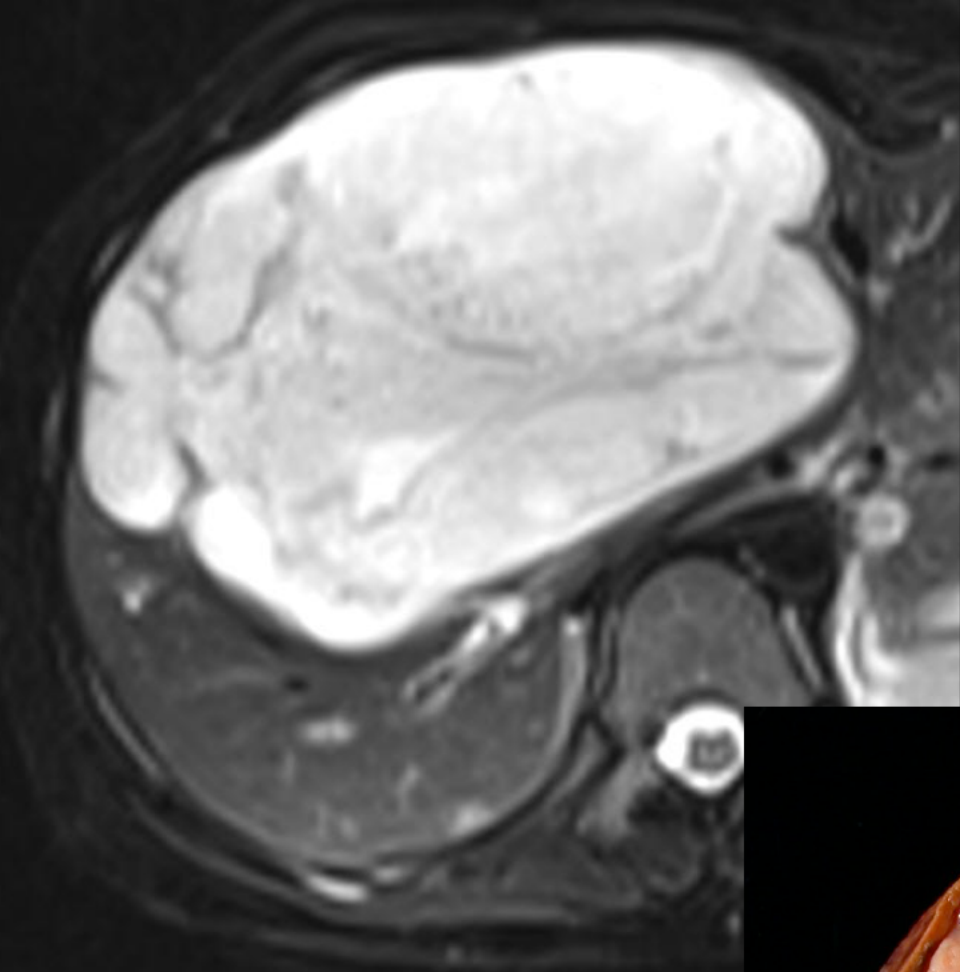
HBP

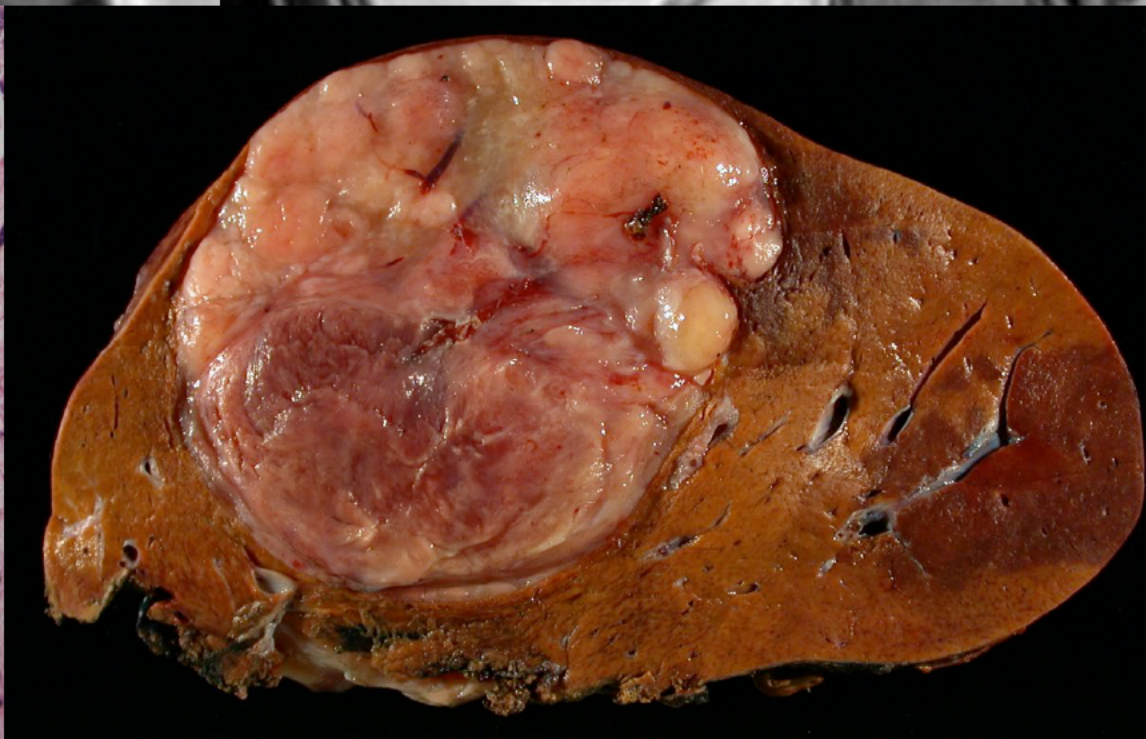
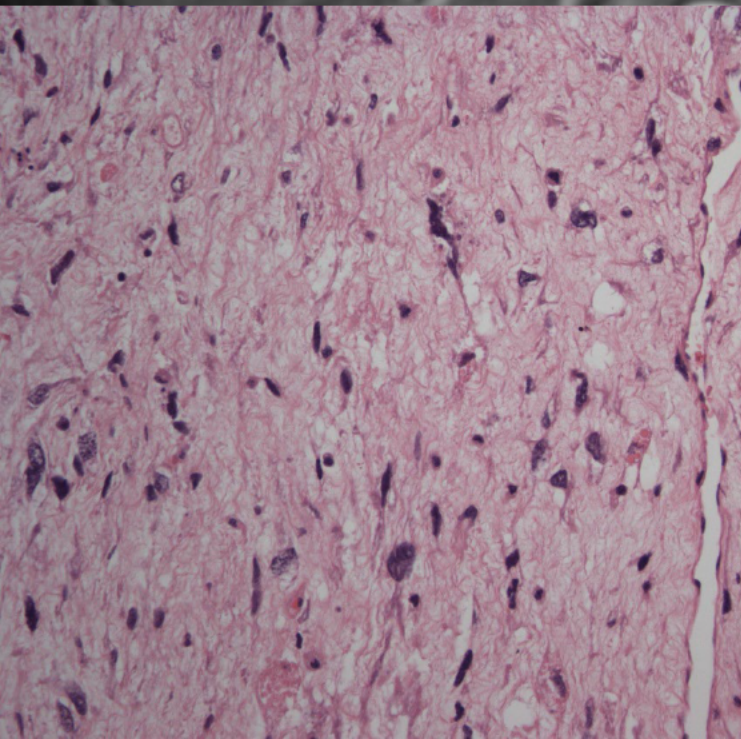
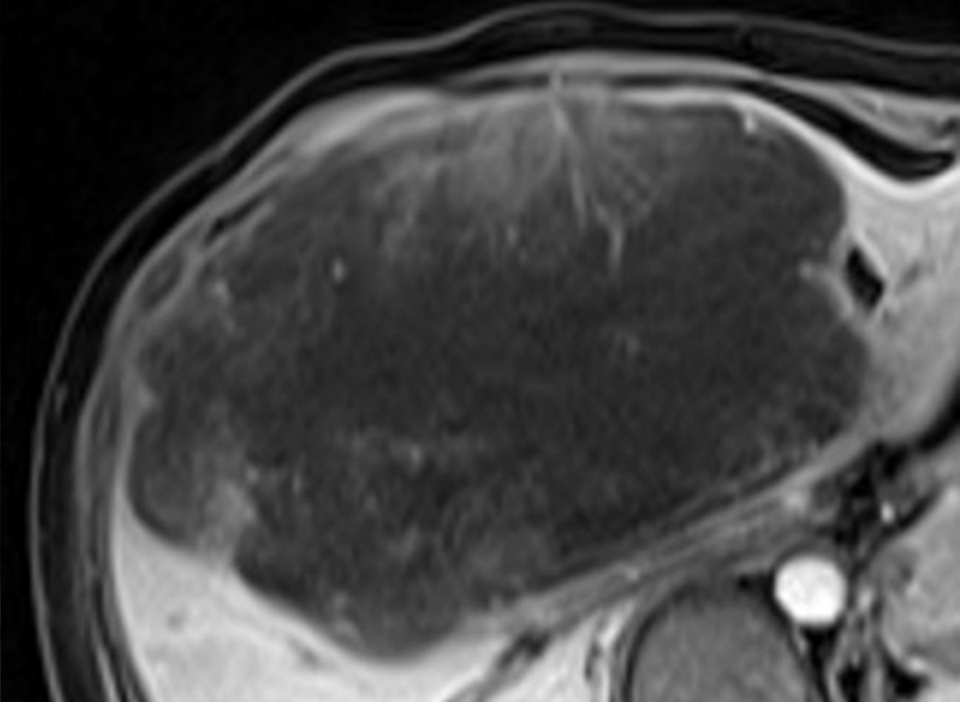
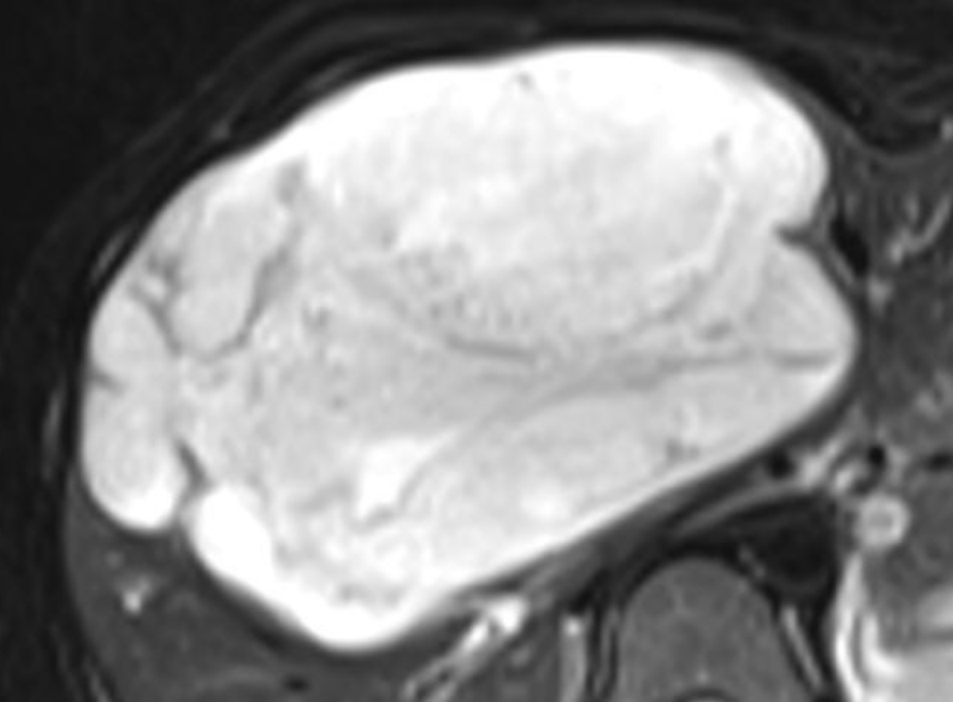


Tc-99m
Tagged
RBC Scan









Undifferentiated Embryonal Sarcoma

Garrett Woodbury, MD
University of Florida
Gainesville, Florida

Many thanks to all of you for
submitting such great cases!
Have a safe trip home –

From the staff of the
American Institute for Radiologic Pathology